

Welcome to the Charlotte Water IBT Stakeholder Advisors Group Workshop #1



This meeting is being recorded.



Attendees will be participating in listen -only mode. Please submit any questions or comments to IBTProject@charlottenc.gov.



***Stakeholder Advisors Group Participants:* Please ensure your ZOOM account name is correct. Failure to do so will result in limited meeting capabilities. Email villatorosl@cdmsmith.com if you need to correct your name once you join the webinar.**

For technical issues, please email villatorosl@cdmsmith.com



Stakeholder Engagement Workshop #1 for the Proposed Interbasin Transfer (IBT) Environmental Impact Statement (EIS)

DECEMBER 16, 2024

ALL MEETING MATERIALS INCLUDING RECORDING, SLIDES, AND COMMENTS
THE WEBSITE FOLLOWING THE MEETING: CharlotteWaterIBT.org

WILL BE POSTED ONTO

Agenda

- 1. Welcome, housekeeping, and introductions**
- 2. Purpose of the additional stakeholder and public engagement process**
- 3. Proposed IBT Modification overview and status**
- 4. Discussion: Regional water resources concerns and opportunities**
- Break**
- 5. Discussion: Alternatives identification**
- 6. Overview of topics for the next workshop**
- 7. Instructions for providing input and closing**

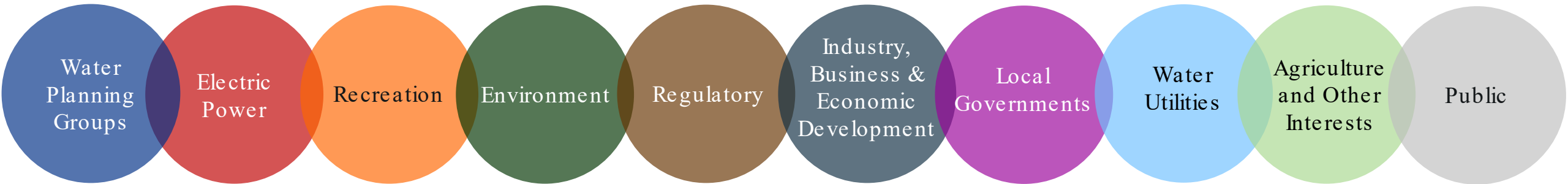
Welcome



Workshop Facilitation

Environmental Impact Statement

Stakeholder Advisors Group



Introductions

- ▶ **Name**
- ▶ **Organization**
- ▶ **What are your water-related interests?**

Please tell us one or two water related interests that brought you here today.

Rules of the Road

- ▶ **Respect the interests and opinions of others**
- ▶ **Be ready and willing to contribute**
- ▶ **Virtual “panelists” are encouraged to participate by raising hand and/or un-muting**
- ▶ **Public observers are invited to email their input after the meeting (instructions at the end of the meeting)**

Thank you for investing your time, effort, and expertise in this process.

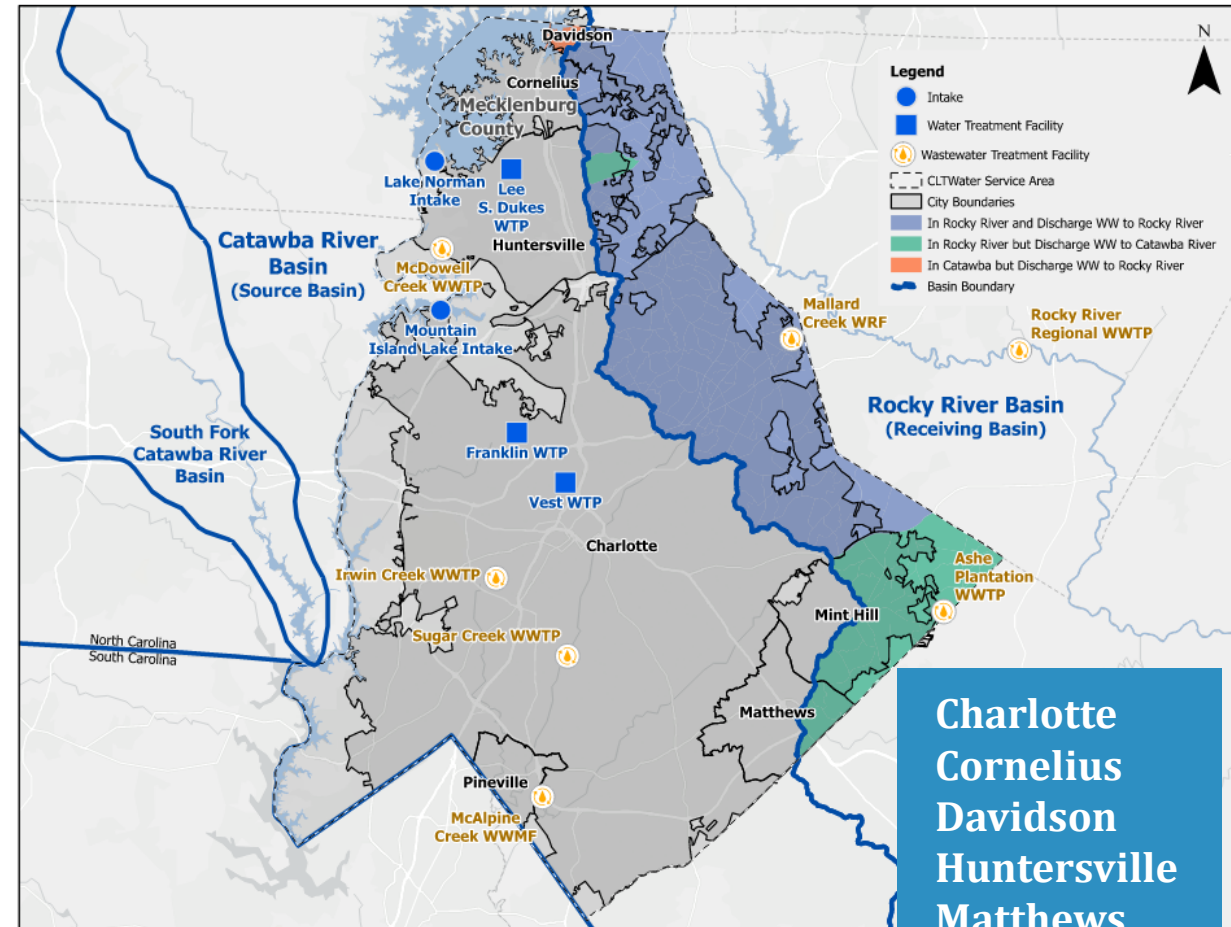
Role of the Stakeholders and Public

- ▶ **Provide feedback on proposed approaches before technical work begins**
- ▶ **Offer actionable suggestions and alternatives to evaluate**
- ▶ **Provide local perspective so concerns and issues are considered**

Proposed IBT Modification overview and status

Charlotte Water's Fundamental Challenge

- ▶ **Need to meet increasing water demand in eastern area**
- ▶ **Duty to serve customers in several communities**
- ▶ **Does not have zoning authority**
- ▶ **Service area straddles Catawba and Rocky Basins**
- ▶ **No sustainable water supply in Rocky Basin**



Charlotte
Cornelius
Davidson
Huntersville
Matthews
Mint Hill
Pineville

IBT Modification

- ▶ **Charlotte Water currently holds an IBT certificate**
- ▶ **Allows water from the Catawba Basin to be used in the Rocky Basin and not returned to the Catawba Basin**
- ▶ **Long-term planning identifies IBT Modification to accommodate future growth**
 - 2010 CWWMG modeling accounted for IBT modification
 - Models being updated by HDR
- ▶ **Final decision is not made – extensive study will follow**

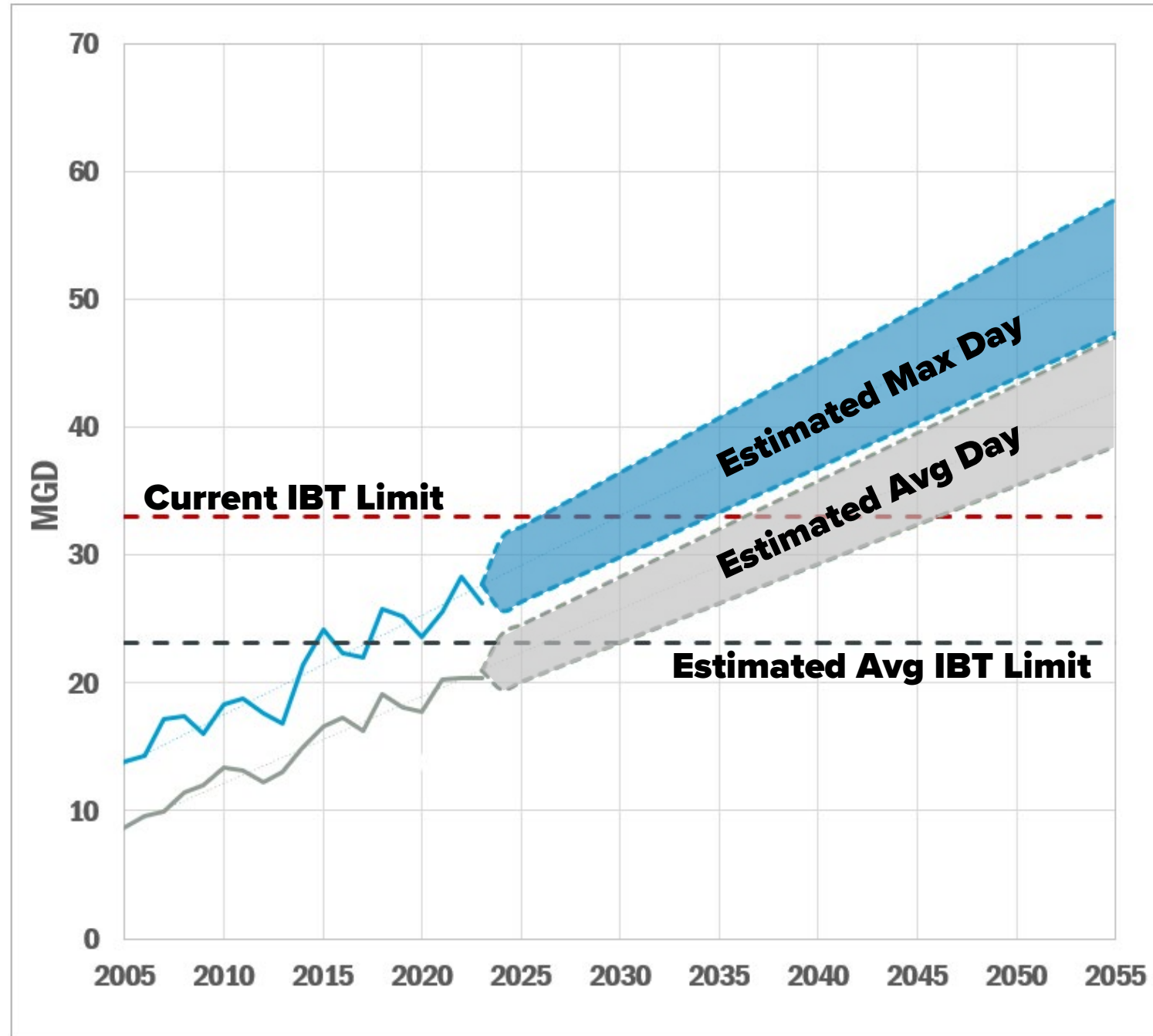
CWWMG: Catawba Water Management Group

Forecast Range

Expect to exceed the current IBT limit by 2030

Timing matches previous predictions

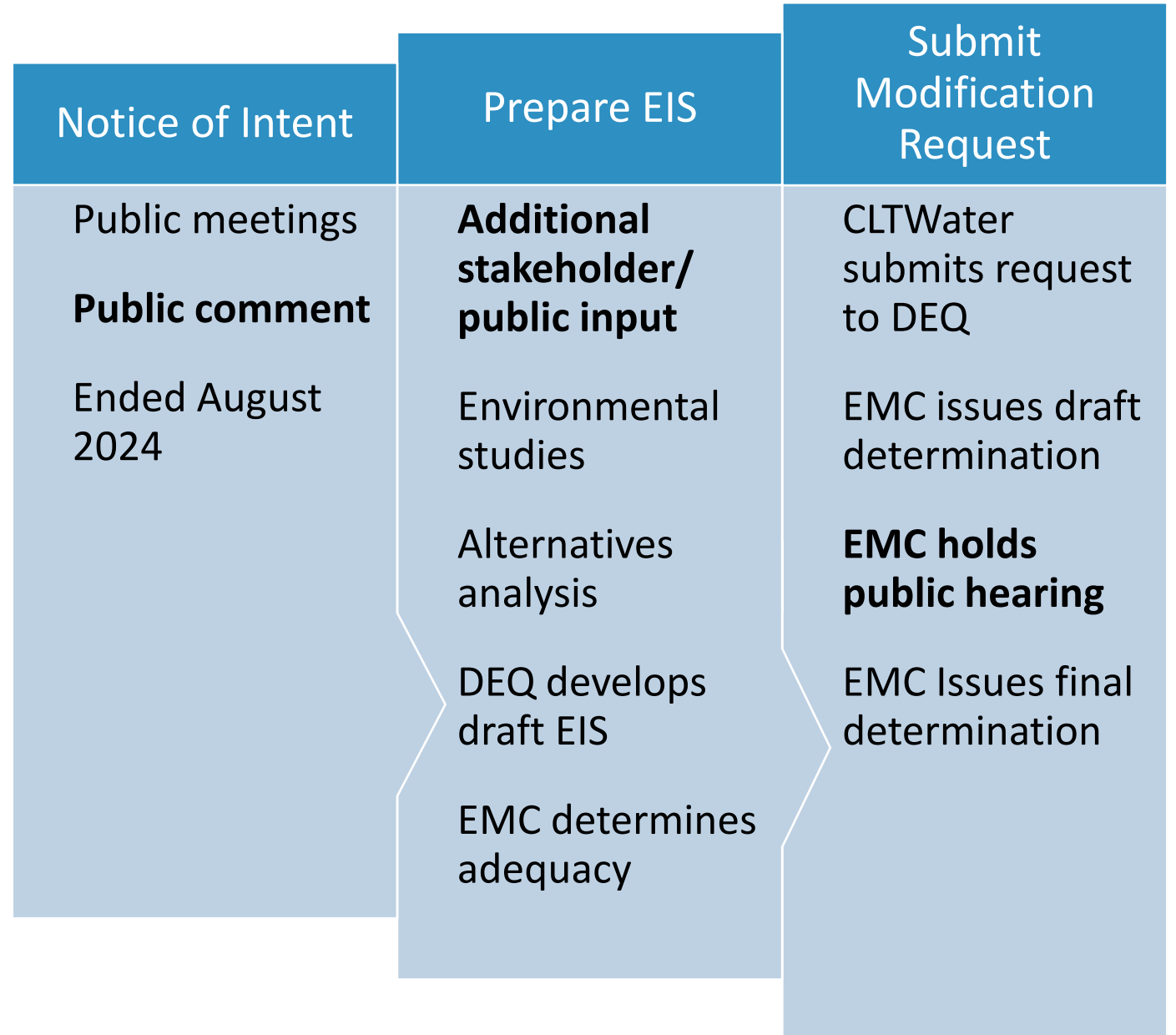
Will be re-evaluated through the EIS process.



CLTWater’s IBT modification process provides many opportunities for stakeholder/public input.

We are in the “prepare EIS phase.”

IBT Certificate Modification is a multi-year process.



Water Use Management

▶ **NC/SC 2010 settlement agreement ([link](#))**

▶ **Low Inflow Protocol ([LIP](#))**

- Applies during drought conditions
- Cooperative agreement among all organizations with intakes on the Catawba River
- Sets water use reduction goals for all users

▶ **Water conservation programs and practices**

- Tiered water use rate structures
- Smart irrigation incentives
- Water leakage detection
- Distribution system management protocols and repair service levels
- Reclaimed water infrastructure
- Conservation education and outreach

EIS must consider

- **Drought management**
- **Conservation**

Anticipated Stakeholder Workshops

Meeting	Focus
1 (Today)	Explore stakeholder water resources interests, concerns, and opportunities Discuss potential alternatives to consider
2	Provide feedback on <u>simple approach</u> to narrow the list Describe what models and model scenarios are and how they are used in EIS development
3	Results of updated Catawba-Wateree and previous Yadkin-Pee Dee models
4	Review selected alternatives and proposed approach <u>for more detailed analysis in the EIS</u>
5	Review and provide feedback on preliminary analyses
6 & 7	Review and comment on preliminary EIS chapters related to alternatives analysis

Each subsequent meeting will include time to review and discuss input received after the previous meeting.

Discussion of regional water resources concerns and opportunities

What are your water resources related concerns?

Some examples we heard from pre-workshop interviews:

- How climate change may impact water resources availability and management
- Potential reductions in minimum flows and the affect on assimilative capacity

Others?

-
-
-
-
-
-
-
-
-
-

What opportunities do you see for water resources management in the region?

Some examples we heard from pre-workshop interviews:

- Development of auxiliary reservoirs for flood control, which may provide additional water supply and support growth and development
- Enhancing the collaborative management of water resources

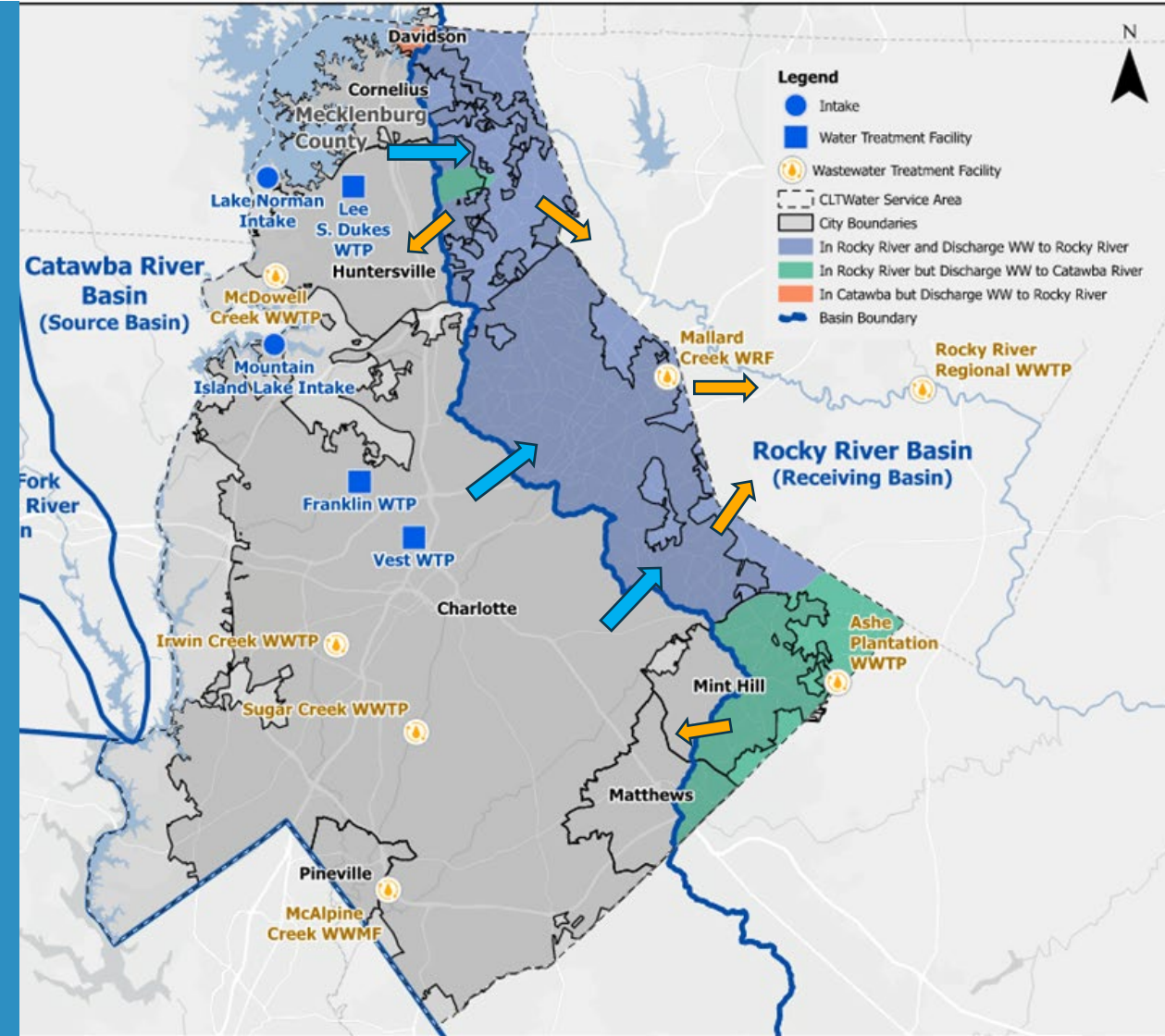
Others?

-
-
-
-
-
-
-
-

Alternatives Identification

Identification of Actionable Alternatives

What are the potential alternatives?



List of Alternatives from Public Notice Period

► Retain current IBT Certificate

- Take no action
- Stop Growth
- New source in the Rocky Basin
- Stop all IBTs

► Modify Charlotte Water's Existing IBT Certificate

• Limit Transfer to Rocky Basin

- Return some or all wastewater flow to the Catawba Basin (source)
- Limit growth
- Incentivize conservation, increase reuse, greywater systems, reduce non-revenue water losses (both basins)

• Alternative Sources/Supplies to Serve Users in Rocky Basin

- Purchase water from adjacent utility with surplus
- Pump and desalinate water from the ocean
- New/Existing reservoir in the Rocky River Basin

• Increase Functional Supply in Catawba Basin to Offset IBT

- New reservoir in Catawba Basin
- Increase capacity of existing reservoirs by dredging

Alternatives must consider

- Drought protocol
- Conservation planning
- Other basin IBTs

Overview of Topics for Next Workshop

Overview of Topics for Next Workshop

▶ **Comments received after Workshop #1**

- CLTWater will provide a summary of comments and post to the IBT website
- Next workshop will include time to review and discuss the input received

▶ **Framework to narrow down the alternatives for EIS**

- Today we developed a list of alternatives to consider
- Not all of these will be included in the EIS

▶ **Describe what models and model scenarios are and how they will be used to support the EIS**

Instructions for providing input and feedback

Incorporating Input on the Meeting

- ▶ **Stakeholder committee, alternates, and members of the public are invited to provide input following each meeting**
 - Recording of the meeting will be posted to the CLTWater IBT Website (<http://CharlotteWaterIBT.org>)
 - Please provide written comments via email to IBTProject@charlottenc.gov
- ▶ **CLTWater to provide summary prior to next meeting**
- ▶ **Compiled feedback discussed at next meeting**

Questions or Comments?





Translation of this document is available by calling 311 or 704-336-7600.

La traducción de este documento está disponible llamando al 311 o al 704-336-7600.

Bản dịch của tài liệu này có sẵn bằng cách gọi 311 hoặc 704-336-7600.

La traduction de ce document est disponible en appelant le 311 ou le 704-336-7600.

如需本文件的翻译，请致电 311 或 704-336-7600。

311 أو 704-336-7600 ترجمة هذه الوثيقة متاحة عن طريق الاتصال بالرقم

Reference Materials

Reference Materials / Requirements

G.S. §143-215.22L
([link](#))

North Carolina General Statute §143-215.22L Regulation of Surface Water Transfers is the current law governing IBTs.

Modified 2002 IBT
Certificate ([link](#))

Set 33 MGD annual max day limit and approved calculation methodology
Requires annual report until exceed 80% of authorized transfer, then report monthly & identify a plan to address future water needs. At 90% of authorized transfer, implement plan

2006 Comprehensive
Relicensing Agreement
([CRA](#))

Between Duke Energy, CLTWater, and numerous basin stakeholders; established water management actions, Low Inflow Protocol (LIP), and implementation of Drought Response Plans
Established Catawba Wateree Water Management Group (CWWMG)

2010 NC-SC Settlement
Agreement ([link](#))

Resolved suit brought by SC in Supreme Court about NC IBTs; set CRA as starting point for settlement for managing withdrawals
Require regular 10-year updates to Water Supply Master Plan and sets agreement on procedures for approving future IBTs in Catawba-Wateree Basin with engagement by NC & SC agencies
Neither state to file action in Supreme Court as long as abide by 2010 Settlement Agreement and Certificate (expires 2055)

Key IBT Websites:

NC Division of Water Resources: <https://www.deq.nc.gov/about/divisions/water-resources/water-planning/water-supply-planning/interbasin-transfer-certification/ibt-rules-policies-regulations>
CLTWater: <http://CharlotteWaterIBT.org>

New Certification vs. Modification

Aspect	New Certification (e.g., Mooresville)	Modification (e.g., CLTWater)
Purpose	Authorization for new water transfer.	Adjustments to an existing certificate.
Trigger	New transfer exceeding statutory thresholds.	Updates for compliance or altered conditions, including increasing transfer amount.
Environmental Review	Requires full Environmental Impact Statement (EIS). EMC's responsibility to approve.	May require EIS or Environmental Assessment (EA). DEQ's responsibility. NC/SC Settlement Agreement requires an EIS.
Public Engagement	Extensive hearings and scrutiny.	Simplified hearing process required.
Approval Criteria	Prove need, explore alternatives, and mitigate impacts.	Same approval criteria and demonstrate compliance. Required certificate conditions and limitations is reduced (Section N not required by statute for a modification).

Key Differences Between Typical EIS and IBT EIS

Aspect	Typical EIS	IBT EIS
Focus	Impacts of general projects (e.g., land use, energy).	Water transfer impacts (source & receiving basins).
Scope	Broad environmental effects.	Both broad and basin-specific (cumulative & secondary) impacts.
Alternatives Analysis	Project-specific alternatives.	Transfer alternatives, includes conservation measures and other water sources.
Public Process	Public hearings near project site.	Public hearings in both basins, stakeholder focus.
Governance	NC SEPA	NC SEPA and NC § 143-215.22L, IBT-specific statutes.