



WASTEWATER PERFORMANCE REPORT



JULY 1, 2024 - JUNE 30, 2025

CHARLOTTE
WATER

 charlottewater.org

  [@cltwater](https://www.instagram.com/cltwater)

 [CLTWater Blog](#)

 [/CharlotteWater](https://www.facebook.com/CharlotteWater)

4222 Westmont Drive Charlotte, NC 28217

I. General Information

Name of Regulated Entity and Responsible Person

City of Charlotte
Angela Charles, Director
Charlotte Water (CLTWater)
Administration Division
4222 Westmont Drive
Charlotte, NC 28217
704-336-4407

Applicable Permits

There are six water resource recovery facilities (WRRF) owned and operated by Charlotte Water (CLTWater). Below is a list of these facilities and their applicable NPDES (National Pollutant Discharge Elimination System) permit number. Included with the list of facilities is the name of the Operator in Responsible Charge (ORC) at the facilities and the site telephone numbers.

WWTP	NPDES Permit Number	ORC	Phone
Irwin Creek WRRF	NC0024945	Jacob Bolick	704-336-2572
Mallard Creek WRRF	NC0030210	Henry Eudy	704-336-1024
McAlpine Creek WWMF	NC0024970	Reid Smith	704-542-0736
McDowell Creek WRRF	NC0036277	Dan Matias	704-336-1125
Sugar Creek WRRF	NC0024937	Donna Slachciak	704-432-2510
Ashe Plantation WWTP	NC0065749	Jeremy Nance	704-634-3389

WW COLLECTION	NCDWQ Permit Number	ORC	Phone
4100 W. Tyvola Rd.	WQCS00001	Matthew Morris	704-301-7827
		Malcom Edwards (backup)	704-649-5098

Description of the collection and treatment systems

Charlotte Water (CLTWater) collects wastewater from approximately 295,747 households and businesses throughout the county. Wastewater is collected and directed (via gravity flow supported by sewage lift stations) to one of six CLTWater water resource recovery facilities or the Rocky River Regional Plant (owned and operated by the Water and Sewer Authority of Cabarrus County [WSACC]) where it is treated. An average of 87 million gallons of wastewater is treated and discharged each day from CLTWater plants. CLTWater sends an average of 4.69 million gallons per day (MGD) of wastewater to the Rocky River

Regional Wastewater Treatment Plant (WWTP) operated by WSACC. Roughly 2.1 MGD of wastewater from Union County is treated at McAlpine Creek WWMF, roughly 5.2% of its 40.6 MGD annual average daily flow (AADF) treatment volume.

More than 300 of CLTWater's 1,126 employees work to maintain 4,638 miles of collection pipelines and 76 wastewater lift stations throughout the county. The gravity wastewater pipes in this system range in size from 8 inches in diameter to 78 inches in diameter.

Each of CLTWater's water resource recovery facilities applies primary, secondary, and tertiary treatment to the waste stream. Large solid particles and inorganic materials are removed by screening and settling. The wastewater is treated biologically to remove dissolved pollutants. The waste stream passes through tertiary treatment filters to remove very small particles that may not have been removed through the settling process. Finally, disinfection reduces bacterial and pathogenic materials. The treated water is released to the nearby creek.

The Wastewater Treatment Process

1. Primary Treatment

Solid particles & objects are captured by screens, grit chambers, and primary clarifiers.

2. Aeration/Secondary Treatment

Wastewater is aerated to support growth of microorganisms that remove harmful pollutants. Nutrient levels are reduced at McDowell and McAlpine Creek water resource recovery facilities.

3. Clarification

Solids and microorganisms settle out in large basins.

4. Tertiary Treatment

Wastewater flows through filters to remove fine particles.

5. Disinfection

Water is disinfected to remove any remaining pathogens, and then the treated water is released into creeks.

II. Summary of System Performance

Fiscal Year 2025 Performance

Sanitary Sewer Overflows (SSOs) From Fiscal Year 2010 to Fiscal Year 2025

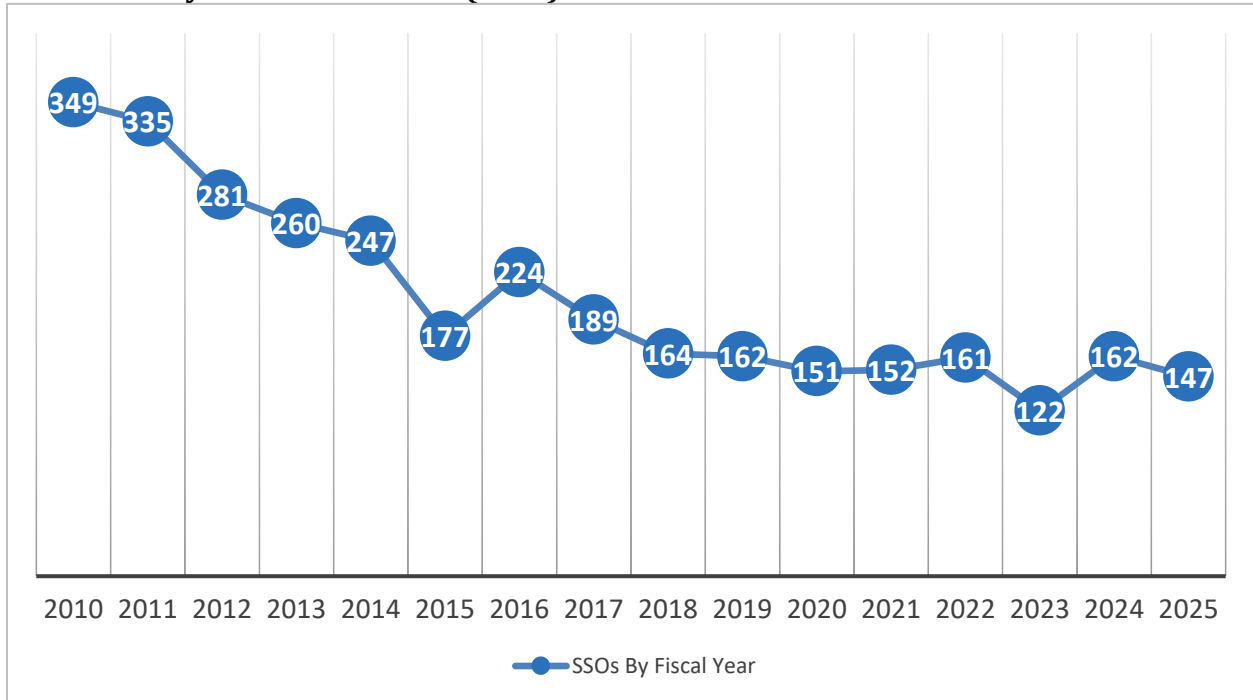


Figure 1. This graph shows a steady decline in overflows over several years from 349 SSOs in Fiscal Year 2010 to 147 in Fiscal Year 2025.

Yearly SSOs vs 5-Year Moving Average

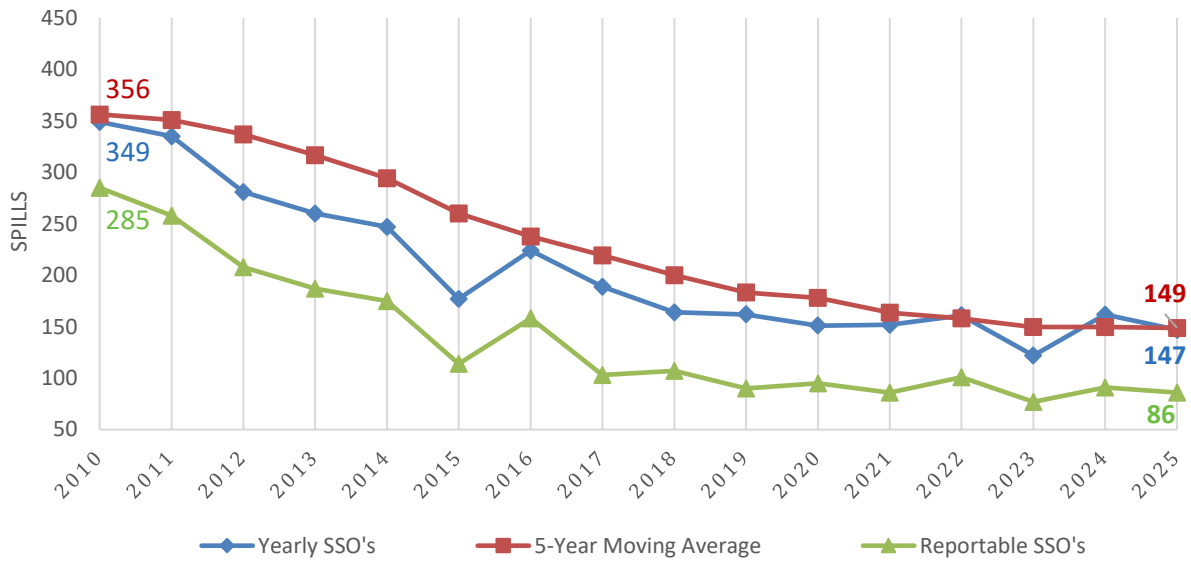


Figure 2. A line graph shows the number of spills, reportable spills, and the five-year moving average dropping over time.

The number of spills per 100 miles of pipe continued to decline in general from 9.2 in fiscal year 2008 to 3.2 spills (1.857 reportable spills) in fiscal year 2025, as illustrated by the table below.

Number of SSOs / 100 Miles vs 5-Year Moving Average

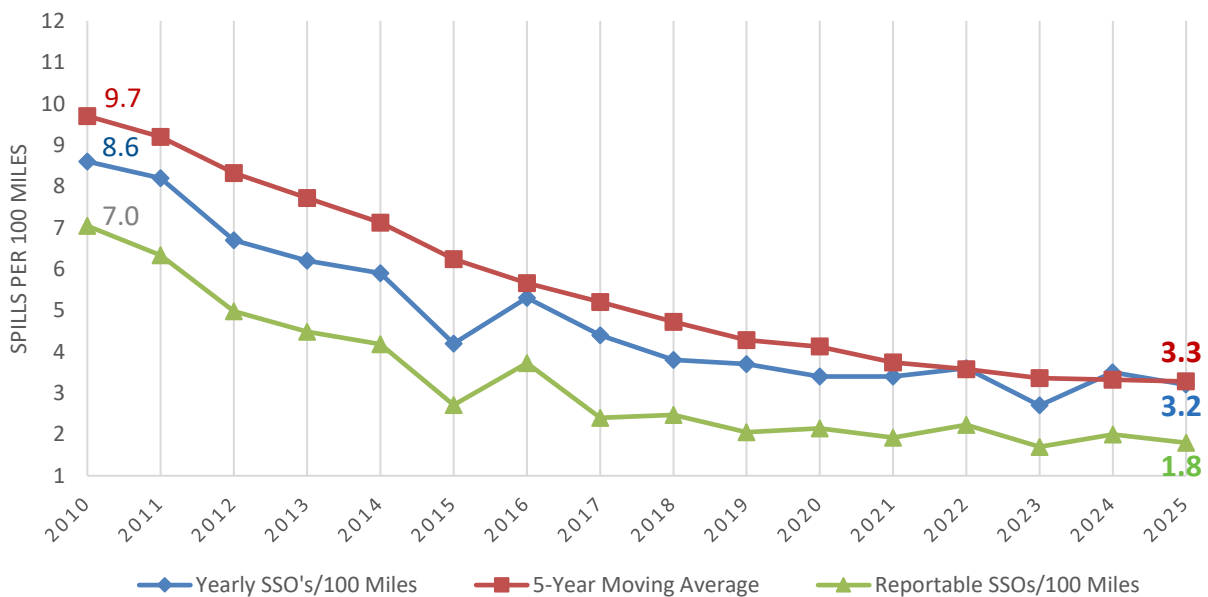


Figure 3. CLTWater continues to reduce overflows from a moving average of 9.7 in Fiscal Year 2010 to 3.3 in Fiscal Year 2025.

Inspection crews and our customers find overflows. Overflows from the wastewater collection system are discovered during routine inspections of the system and through reports from the public to our 311 Customer Service Call Center. CLTWater notifies the media anytime a sanitary sewer overflow results in 1,000 gallons or more reaching surface waters or any overflow reaching recreational waters. Customers are notified via calls, texts, and/or emails, and posts on Nextdoor social media. A legal notice is posted in the Charlotte Observer when overflows of 15,000 gallons or more reach surface waters.

This annual report includes all incidents where wastewater escaped out of a public manhole or public collection system pipe before reaching proper treatment, including spills less than the required reporting thresholds (i.e., less than 1,000 gallons or any amount reaching surface water). There were 86 reportable spills during fiscal year 2025. All spill response protocols are followed regardless of the spill volume or reporting status. The report summarizes spills (both reportable and non-reportable) and other challenges in the sanitary sewer system and water resource recovery facilities.

CLTWater employees work 24 hours a day, 365 days per year, to prevent and respond to overflows. Crews prevent overflows by proactively clearing pipes of tree roots, wipes, and grease and replacing, repairing, or rehabilitating broken and aging pipes. CLTWater has increased its efforts to educate customers about properly disposing of fats, oils, and grease (FOG).

Performance Highlights

CLTWater celebrated some important milestones in FY2025 while taking numerous actions to prevent overflows and protect water quality through effective wastewater treatment.

- All six water resource recovery facilities earned Peak Performance Awards from the National Association of Clean Water Agencies (NACWA) for the calendar year ending 2024. NACWA Peak Performance Awards recognize wastewater treatment professionals throughout the nation for protecting the environment and public health through outstanding treatment and discharge regulatory compliance.
 - McAlpine Creek Wastewater Management Facility was awarded its thirteenth Platinum Award for seventeen consecutive years of perfect compliance. (Five years of perfect compliance are needed to achieve the Platinum award.)
 - McDowell Creek Water Resource Recovery Facility earned their eighth consecutive Platinum Award for twelve consecutive years of perfect compliance.
 - Mallard Creek Water Resource Recovery Facility earned their fifth Platinum Award for nine years of perfect compliance.
 - Irwin Creek Water Resource Recovery Facility earned a Platinum Award for five consecutive years of perfect compliance.
 - Ashe Plantation earned their second Platinum Award for six consecutive years of perfect compliance.

- Sugar Creek Water Resource Recovery Facility earned a Gold Award.
- Over 6,800 compliance judgment points were met during the 2024 calendar year.
- 3.45 miles of wastewater pipe and 1,039 manholes were rehabilitated or replaced.
- 285 miles of wastewater pipe were treated with root control chemicals.
- 757 miles of wastewater lines were cleaned (including some multiple cleanings in the same location) by CLTWater Field Operations Staff and contractors.
- 125.16 miles of rights of way were cleared by contractors to maintain access to off-street sanitary wastewater pipes and to help prevent root intrusions.
- 122 miles of pipe were closed-circuit television recorded (CCTV) for inspection by CLTWater staff and contractors.
- There are 76 Wastewater Lift Stations serving the CLTWater service area. Staff performed 144 preventative maintenance/electrical tasks for a total of 3101 work hours. This does not include daily/weekly station checks, wet well cleaning, emergency generator testing, or emergency/routine repairs. River District #1 and Clarke Creek #2 were added this year.
- McAlpine Creek Wastewater Management Facility captures and converts methane gas (a byproduct of wastewater treatment) into a fuel for electricity production and useful heat. In the past 12 months the Combined Heat & Power (CHP) system engine has generated more than 3.5 million kilowatt hours of energy. Since it started running, the CHP has generated in excess of 43.2 million kilowatt hours of clean energy, approaching \$1.933 million in gross revenue back to the City. Methane gas is also generated at Irwin, McDowell, and Mallard WRRFs. There, methane gas is used to generate the heat required for anaerobic digestion to treat the solids produced during the treatment process.
- CLTWater's Design & Construction team installed more than 34,000 linear feet of pipe to provide 92 new services, an approximately \$7 million investment to extend service to new customers. Four of the projects resolved health hazards related to failing septic systems.
- Mallard Creek Water Resource Recovery Facility's reclaimed water was reactivated, capable of supplying up to 4.0mgd a day to permitted customers. When the Mallard Creek WRRF experienced an illicit discharge of PCB's (Polychlorinated Biphenyls) in 2014, the Reclaimed Water System was shut down to protect permitted users' systems from potential contamination. Following the illicit PCB discharge to the Mallard Creek WRRF, the facility underwent a lengthy decontamination process in order to ensure the facility was free of PCBs. After the decontamination process, the Mallard Creek WRRF began a large expansion project. After the expansion was complete, a cross-functional team, including staff from Field Operations, Engineering, Water Treatment, Maintenance, Backflow, Customer Service, IT, and Laboratory Services, began the necessary steps to test and restart the reclaimed water system.

Capital Investment Highlights

Projects in Progress in FY 2025

- The Stowe Regional Water Resource Recovery Facility is an example of CLTWater's commitment to meet the growing wastewater needs of a fast-expanding region. The

facility will serve the northwestern Mecklenburg County and eastern Gaston County (Mount Holly and Belmont). The first phase of the Stowe Regional Water Resources Recovery Facility (WRRF) construction is well underway and has reached approximately 66% completion.

- The Mallard Creek Water Resource Recovery Facility capacity improvement project is at 60% completion. This project increases the plant capacity from 13.1 MGD to 16 MGD.
- The Mallard Creek Pipe Improvement Project has completed the design. Construction will start in the fall of 2025.
- The McAlpine Creek Wastewater Management Facility's Nutrient Harvesting project completed the design phase. Construction will begin in the fall of 2025.
- Derita Branch Tributary Wastewater Project Phase 2 is partially complete. A small section (Craighead Road to Interstate-85) will begin in fiscal year 2027. The combination of Phase 1 and Phase 2 projects is a \$17.5+ million investment to upsize pipe to accommodate current and future capacity.

Projects Completed in FY 2025

- Little Hope Creek Wastewater Project (Phase 3A.1) was completed from Mockingbird Lane to Woodlawn Road. Substantial growth requires larger wastewater pipes to serve the area. The total investment for Phases 1-3 is approximately \$50 million.
- Six Mile Creek Wastewater Pipe Replacement—completed in summer 2025. This \$2.2 million investment replaced 4,724 linear feet of wastewater pipe to better serve customers and reduce the risk of wastewater overflows.



Fats, Oils and Grease Education Highlights

- Charlotte Water started a fats, oil and grease reduction effort during the late 1990s to educate customers about food related clogs that lead to sanitary sewer overflows. In 2017, Charlotte Water rebranded to FlowFree to focus on other overflow contributors now that grease related spills continue to decline.
- In FY 2025, CLTWater staff inspected grease-handling facilities at 5,243 food service establishments and restaurants (not including follow-up inspections) to ensure proper grease disposal. BMP Posters were distributed to the facilities to post. (2,621 posters distributed)
- Staff issued 49 Notices of Deficiency (NOD) of which 49 returned to compliance.

- Inspectors mailed information to 1891 customers near spill sites and handed out information after spill events to 2927 customers in apartments/multi-family complexes.
- Staff conducted 6 outreach educational presentations to more than 850 children and adults.
- Staff continues to provide bilingual door hangers and promotional items for property managers to give to new residents. Educational posters (2,160 posters provided) were also provided for restaurant managers to post.
- A multi-family outreach team was created in the System Protection division in 2019 that worked closely with the Communications Team to create a multi-pronged outreach plan for multi-family units that were causing blockages or SSO's in the system. The plan included targeted doorhangers, pop up events, meetings with facilities staff and residents, educational materials and if necessary, enforcement techniques. For FY 2025, the Multi-Family Team conducted 331 Inspections at Multi-Family units across Mecklenburg County.

Industrial Pretreatment Highlights

The CLTWater System Protection Division operates within CLTWater's service area to enforce federal, state, and local regulations pertaining to discharges to the sanitary sewer. This includes protecting workers and treatment processes from pollutants harmful to people or the environment. The Division includes the Industrial Pretreatment Program, the Commercial Source (Flow Free) Program, and our Septage Receiving Program.

The Pretreatment Program identifies, permits, and regulates industrial users and others to keep unsuitable discharges out of the wastewater treatment plants. The Commercial Source Program, also referred to as Flow Free, inspects and regulates commercial users, such as food service establishments, to keep unsuitable discharges such as fats, oils and grease out of the collection system and wastewater treatment plants. CLTWater's Septage Receiving Program permits septic haulers that discharge septic waste at the McAlpine Creek Wastewater Management Facility. The septage receiving station is staffed by System Protection personnel. The receiving program includes monitoring and analysis of waste received.

While industrial and commercial compliance is extremely high, identifying sources of potentially harmful discharges is an ongoing challenge. In fiscal year 2025, the Trunkline Monitoring program continued, enabling CLTWater's System Protection and Water Quality staff to closely observe what industrial, institutional, and commercial customers discharge to the wastewater treatment plants, identify potential problem areas, and protect the collection system, wastewater pipe workers, treatment plants and the environment.

- There were over 250 industrial inspections and site visits in the past fiscal year. As part of the Commercial Source program, food service establishments and other grease producing businesses are identified and inspected on an annual basis. Compliance is also monitored using a document tracking software system.

- During fiscal year 2025 the Commercial Source program continued their outreach program specifically focused on multi-family housing properties.
- To date CLTWater has recorded 372 industrial permit limit violations for effluent samples collected by Significant Industrial Users (SIU) during fiscal year 2025. These violations resulted in a Notice of Violation, Notice of Non-Compliance, Administrative Order, or similar assessment.
- 42 Notices of Violation with Civil penalties were assessed to users during the fiscal year for permit limit exceedances and other violations.

In November of 2021, CLTWater began a collaborative permitting program with the local brewery community. The goal of the program is to ensure that the sanitary sewer system continues to perform properly, allowing brewers to keep producing the best beer possible. Working with the Charlotte Independent Brewers Alliance (CIBA) and representatives from five area breweries, a local brewery permit program was developed and put into place on July 1, 2022. In fiscal year 2025, over 40 inspections were conducted at local breweries and distilleries as part of this program. An award program for these permittees was also put into place in fiscal year 2024. Twenty-five (25) Certificates of Environmental Achievement were awarded to local brewers in fiscal year 2025 for compliance during calendar year 2024.

Environmental Excellence Awards

CLTWater honored 26 local companies with Environmental Excellence Awards in fiscal year 2025 for compliance during calendar year 2024, including:

- Four (4) Platinum recipients for at least five consecutive years of Gold level compliance and reporting,
- Fifteen (15) Gold recipients for 100% compliance with permit limits and reporting, and
- Seven (7) Silver recipients for 90% compliance with permit limits and 100% compliance with reporting.
- Two (2) awardees, pictured below, also received Crown Awards. One was awarded the Crown Award for Pollution Prevention, recognizing industrial source reduction. Another was awarded the Crown Award for Most Improved, recognizing a reduction in wastewater pollutants through pretreatment system upgrades and process improvements.



Figure 4 Photos of Crown Award Recipients at the Environmental Excellence Awards

Wastewater Collection Challenges

Of the 147 sewer spills that occurred, pipe failure, tree roots, grease, and debris accounted for most of the sanitary sewer overflow causes.

The largest individual spill in FY 2025 was on October, 14th, 2024. Charlotte Water crews responded to a wastewater overflow at 14830 Choate Circle (Steele Creek Lift Station). An estimated 474,458 gallons reached Walkers Branch. A valve failure at the lift station caused wastewater to overflow. Charlotte Water informed customers in the immediate area via text alert and on Nextdoor.

Mainline blockages, by any cause and including those unrelated to overflows, have decreased from 159 in fiscal year 2024 to 157 in fiscal year 2025. Many of the mainline blockages were found through SmartCover sensors (see *Field Operations – Critical Assets Group* on page 11) and several were in off-street sewer lines that would have become sanitary sewer overflows if not found by staff.

Wipes, even ‘flushable’ wipes, and other rags accounted for several blockages leading to spills. These are typically categorized as “Debris in The Line,” which also includes rocks, gravel, etc. Wipes related spills are typically in wastewater pipes serving multi-family (apartments, condos) and institutions (hospitals, nursing facilities, schools, daycares etc.).

Fiscal Year 2025 Overflows by Primary Cause

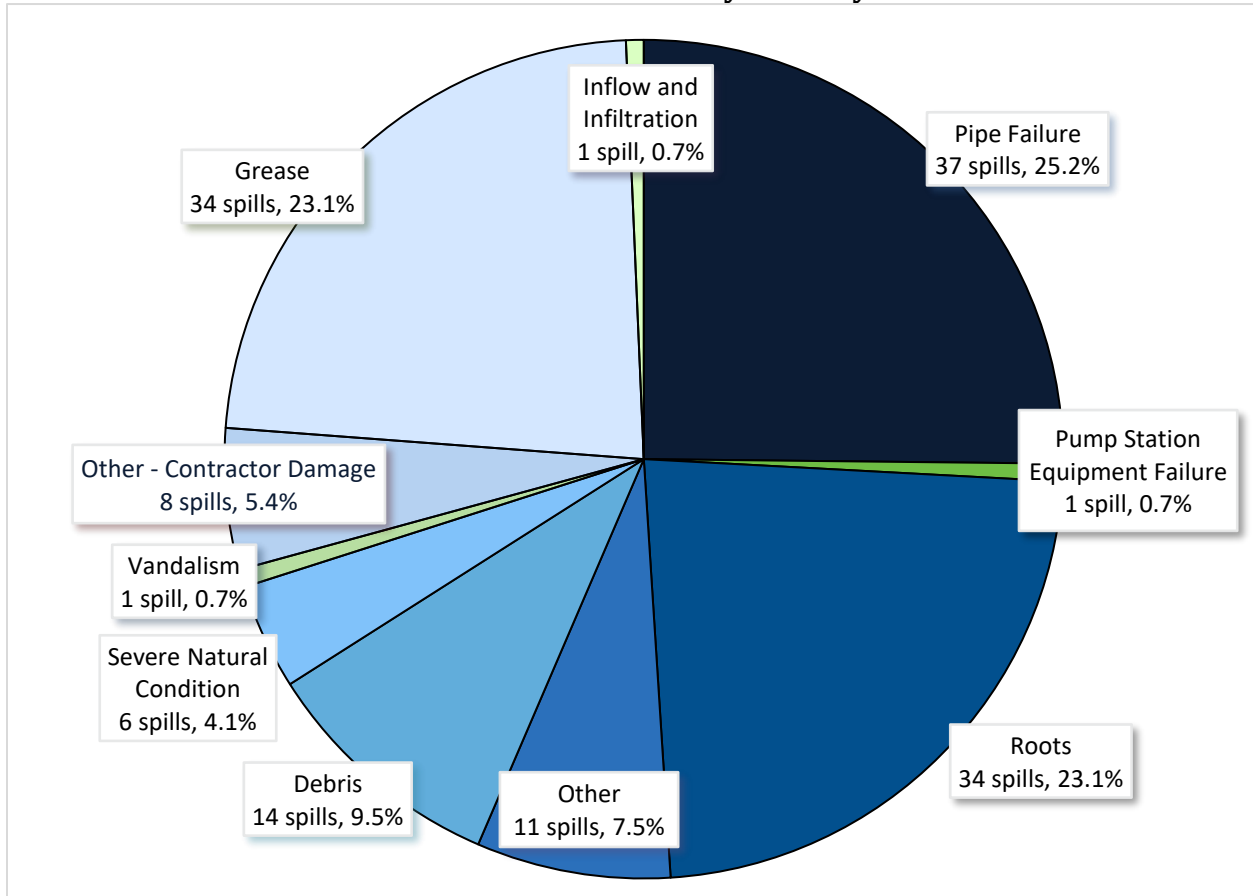


Figure 5. The leading causes of SSOs are pipe failure, grease, and tree roots.

Grease and other blockages that lead to sewer overflows are cleared by CLTWater crews using various cleaning methods, including mechanical rodders and truck-mounted water jets. If a damaged pipe is discovered during the CCTV inspection following the cleaning, a repair is initiated.

CLTWater Rapid Response Crews are quick to respond when notified of a possible spill. Crews responded to more than 93 percent of the spills within 60 minutes and 97 percent of the spills within 120 minutes. The average for all spill responses was 28 minutes. The state standard for response is 120 minutes or less.

Field Operations – Critical Assets Group

Regular inspections are performed by Charlotte Water’s Critical Assets Group, which was established to inspect all high-priority and vulnerable wastewater pipes. The Critical Assets Group has expanded its inspection responsibilities to include additional pipes not previously identified as critical but have become critical due to streambank erosion. Additionally, pipes installed after 2007, which were not included in an evaluation of critical infrastructure during an NCDEQ Collection Permit renewal, have been identified and added

to the inspections. As part of a collaboration effort with Mecklenburg County Storm Water Services, numerous stream bank erosion problems have been identified threatening sanitary sewer lines. A contract for streambank restoration, which protects these sanitary lines, was established several years ago and has been renewed. Also, the Critical Assets Group maintains 470 SmartCover level sensors strategically placed in areas at risk for spills. Fifty-seven mainline blockages were found, and 51 blockages were resolved before they became spills in FY 2025. The cost to maintain the SmartCovers is more than \$1 million annually, significantly reducing the cost of adding additional staff and cleaning equipment.

The Critical Asset Group also continues to use in-house drone services to inspect previously inaccessible locations and to assist with streambank inspections.

Wastewater Treatment Challenges

Charlotte Water's water resource recovery facilities met 100% of all discharge limit tests set forth by our NPDES permits. Staff continue to improve maintenance capabilities and overall performance. Major rehabilitation and improvement projects help maintain compliance.

CLTWater WRRFs did not have any permit limit violations in FY 2025; however, CLTWater did receive the following Notice of Violation (NOV) with Notice of Recommendation for Enforcement.

- In March 2025 Sugar Creek WRRF received an NOV for an Unpermitted Outlet to Waters of the State due to a pipe cap, or blind flange, failure from an underground force main that delivers partially treated wastewater from the Sugar Creek WRRF's influent pump station to the facility's West Equalization Basin causing the discharge of partially treated wastewater onto the land surface and subsequently into Little Sugar Creek via a storm drain adjacent to the area of the affected pipe. The pipe was excavated, and a cap to the pipe was replaced. Other caps were also inspected.

Wastewater Capacity Needs

Charlotte Water is in the construction phase for its sixth major treatment facility, the Stowe Regional Water Resources Recovery Facility (WRRF) and plans to have Phase 1 of the WRRF online in 2026. The Stowe RWRRF will start with the capacity to process up to 15 million gallons of wastewater per day. The first phase is scheduled for completion in 2027. Future Phase 2 will expand the facility's wastewater treatment capacity to be able to process 25 million gallons of wastewater per day. Phase 2 will be triggered when McAlpine Creek Wastewater Management Facility average daily flow (ADF) reaches 70% capacity. Several conveyance projects associated with the development of the Stowe Regional WRRF will change the current WWTP service area delineation. Two new pump stations will be built to allow Charlotte Water to support the region with wastewater service by conveying wastewater from the City of Mount Holly and City of Belmont in Gaston County. The pump stations will pump wastewater under the Catawba River to the Charlotte Water wastewater

system. The agreements between Charlotte Water, Mount Holly, and Belmont, are interlocal agreements (ILA) for wholesale wastewater conveyance and treatment. The Mount Holly Pump Station & Force main project is 95% completed and will wrap up in early FY 2026.

The Wastewater System Master Plan (WWSMP) completed in December of 2022, lays the foundation for the systemwide needs for the next 30+ years. This comprehensive master plan provides over 20 recommendations for each of the six wastewater treatment plants and the major trunks along the collection system, including lift stations and alternative scenarios.

In addition to the WWSMP, individual basin studies have been conducted over the past fiscal year. These basin studies are conducted to complement the WWSMP and address challenges at the local basin or area. In FY24, two basin studies were completed, Briar Creek and the Central Business District which evaluated the sewer serving Uptown Charlotte.

CLTWater's Capacity Assurance Program (CAP) was implemented on January 1, 2009. CAP helps CLTWater prevent sanitary sewer overflows (SSOs) that could be caused by adding too many customers' wastewater flow to an existing pipe. Developers are encouraged to apply for a CAP review during the early stages of requesting building permits or rezoning. This review process is performed at no cost to the applicant. Engineers analyze hydraulic models, past spills in the area and other field data to verify that there is adequate capacity in the pipes downstream. If no major sewer capacity limitations are found during the review, applications are generally approved in 30 days. Some reviews lead to identification of capital pipeline projects to improve the service level to our current customers as well as accommodate projected development.

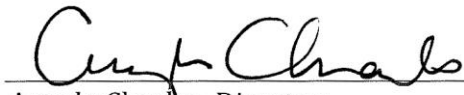
III. Notification

Sanitary sewer overflow and wastewater treatment plant details are included in Sections V and VI.

This report is available to the users or customers of this system by visiting <http://charlottewater.org>. Customers will receive a summary version via a bill insert in the September water bill. A news release will be issued to local media outlets. In addition, the summary version will be translated into Spanish and advertised during the month of September in a regional Spanish-speaking newspaper.

IV. Certification

I certify under penalty of law that this report is complete and accurate to the best of my knowledge. I further certify that this report has been made available to the users or customers of the named system and that those users have been notified of its availability.



Angela Charles, Director
Charlotte Water



Date

V. Listing of Sewer Spills

The following is a list of spills (in gallons) from the public wastewater system that occurred between July 1, 2024 and June 30, 2025.

Date	Volume (Gallons)	Volume to Surface Water	Surface Water Name	Fish Kill?	Address	Primary Cause
7/10/2024	150	0	Irwin Creek	No	4331 Chesapeake Dr	Roots
7/12/2024	28800	28800	Upper Little Sugar Creek	No	715 Charlottetowne Av	Pipe Failure
7/12/2024	250	0	Sugar Creek	No	315 Rountree Rd	Other - Contractor Construction Damage
7/23/2024	700	700	Stewart Creek (Irwin)	No	4826 Worth Pl	Other
7/24/2024	57	0	Lake Norman	No	17045 Freshwater Ln, Cornelius	Pipe Failure
7/24/2024	26	0	Four Mile Creek	No	2400 Honey Creek Ln, Matthews	Roots
7/26/2024	76	0	Lake Norman	No	16343 Stinson Cove Rd, Huntersville	Pipe Failure
8/2/2024	156	0	Upper Little Sugar Creek	No	1218 Queens Rd, Charlotte	Pipe Failure
8/6/2024	58	0	Irwin Creek	No	5212 Granite Creek Ln	Grease
8/9/2024	60075	60075	Irwin Creek	No	520 Elliot St	Severe Natural Condition
8/9/2024	208	0	McAlpine Creek	No	5301 Hollirose Dr	Roots
8/10/2024	771	385	Studman Branch	No	15212 Caspian Way	Debris In Line
8/26/2024	180	75	Walkers Branch	No	14718 Tamarack Dr	Debris In Line
8/27/2024	470	235	Irwin Creek	No	3148 Amay James Av	Other
8/29/2024	1910	1910	Stewart Creek (Irwin)	No	614 State St	Pipe Failure
8/31/2024	575	575	Briar Creek	No	2101 Laburnum Av	Pipe Failure
9/5/2024	339	339	Six Mile Creek	No	11704 Dan Maples Dr	Grease
9/5/2024	57	0	Irwin Creek	No	1301 Pressley Rd	Roots
9/17/2024	465	0	McAlpine Creek	No	2651 Circa Dr, Matthews	Grease

9/18/2024	170	170	Long Creek	No	7400 Trotter Rd	Roots
9/19/2024	400	0	Sugar Creek	No	101 W Woodlawn Rd	Other - Contractor Construction Damage
9/23/2024	920	460	McAlpine Creek	No	552 W Charles St, Matthews	Other
9/23/2024	1395	700	Paw Creek	No	7143 Hunters Glen Dr	Grease
9/27/2024	1150	1150	Campbell Creek (McAlpine)	No	2300 Brook Canyon Dr	Severe Natural Condition
9/27/2024	55	0	Stewart Creek (Irwin)	No	1721 Maribel Av	Pipe Failure
9/28/2024	224443	224443	Catawba River	No	6003 Stephens Rd, Huntersville	Severe Natural Condition
9/28/2024	2050	100	Lake Wylie	No	16513 Turtle Grove Tr	Severe Natural Condition
9/30/2024	11275	11275	Sugar Creek	No	9401 Arrowpoint Bv	Severe Natural Condition
10/2/2024	2575	2575	Sugar Creek	No	10345 Nations Ford Rd	Severe Natural Condition
10/10/2024	510	255	Lake Norman	No	16035 Jetton Rd, Cornelius	Pipe Failure
10/14/2024	474458	474458	Walkers Branch	No	14830 Choate Cr	Pump Station Equipment Failure
10/17/2024	345	345	Irwin Creek	No	820 Hamilton St	Grease
10/23/2024	195	0	Taggart Creek (Sugar)	No	4800 Airport Center Py	Grease
10/27/2024	410	205	Crooked Creek	No	3009 Stonehedge Ct, Matthews	Roots
10/29/2024	310	0	Briar Creek	No	5913 Fairmarket Pl	Grease
10/29/2024	1940	1940	Irwin Creek	No	1224 Condon St.	Pipe Failure
10/31/2024	270	135	Kings Branch	No	8508 Lodge South Cr	Grease
11/1/2024	8640	8640	Upper Little Sugar Creek	No	701 Kenilworth Av	Pipe Failure
11/12/2024	168	80	Lake Norman	No	420 Griffith St, Davidson	Pipe Failure
11/13/2024	1220	610	Lower Clarke Creek	No	8625 Hollow Creek Cr	Debris In Line

11/14/2024	3320	1635	Irwin Creek	No	1019 S Mint St	Grease
11/21/2024	153	0	Lake Wylie	No	18115 Kalabash Rd	Pipe Failure
11/21/2024	146	0	Lower Little Sugar Creek	No	301 S Davidson St	Roots
11/24/2024	8000	8000	McAlpine Creek	Yes	8509 Corolla Ln	Roots
11/25/2024	225	0	McDowell Creek	No	15304 Water Front Dr, Huntersville	Roots
11/26/2024	300	250	Irwin Creek	No	4600 Garvis Dr	Roots
12/8/2024	180	0	Upper Little Sugar Creek	No	905 Lexington Av	Pipe Failure
12/11/2024	460	0	Kings Branch	No	7505 Kings Ridge Dr	Debris In Line
12/12/2024	17	0	McAlpine Creek	No	11129 Monroe Rd, Matthews	Pipe Failure
12/16/2024	60	0	Upper Little Sugar Creek	No	4520 N Tryon St	Grease
12/26/2024	245	0	Lower Little Sugar Creek	No	3920 Lovett Cr	Roots
12/31/2024	126	0	Six Mile Creek	No	6701 Thurmont Ct	Roots
1/1/2025	820	820	McMullen Creek	No	735 Glendora Dr, Charlotte, 28212	Roots
1/2/2025	61	0	Irwin Creek	No	2500 Druid Hills Wy	Pipe Failure
1/4/2025	600	600	McMullen Creek	No	7837 Pineville-Matthews Rd	Other - Contractor Construction Damage
1/5/2025	966	966	Irwin Creek	No	2001 Erie St	Debris In Line
1/8/2025	90	0	Taggart Creek (Sugar)	No	5042 Meadow Oak Commerce Py	Pipe Failure
1/13/2025	288	288	Campbell Creek (McAlpine)	No	7514 Dorn Cr	Other
1/13/2025	1300	1300	Stewart Creek (Irwin)	No	2040 English Dr	Pipe Failure
1/14/2025	250	250	Irwin Creek	No	5450 Kyndall Walk Wy	Roots
1/14/2025	250	250	Upper Little Sugar Creek	No	701 Kenilworth Av	Pipe Failure

1/15/2025	143	0	Lower Little Sugar Creek	No	5600 Londonderry Rd	Roots
1/16/2025	111	0	Irwin Creek	No	3005 Reid Av	Debris In Line
1/16/2025	500	500	Mallard Creek	No	11230 Mallard Crossing Dr	Pipe Failure
1/16/2025	1170	300	McMullen Creek	No	4107 Tapperty Cr	Grease
1/17/2025	42	0	Sugar Creek	No	9801 Industrial Dr, Pineville	Debris In Line
1/17/2025	25.5	0	Lake Wylie	No	11023 Lochmere Rd	Pipe Failure
1/20/2025	875	0	Lower Mountain Island Lake	No	12308 Haymarket Rd	Pipe Failure
1/21/2025	110	110	Lower Little Sugar Creek	No	814 Camborne Pl	Roots
1/21/2025	40	0	Lake Norman	No	17204 Connor Quay Ct, Cornelius	Pipe Failure
1/22/2025	470	470	Lower Little Sugar Creek	No	2227 Wensley Dr	Pipe Failure
1/22/2025	46	0	Long Creek	No	9609 Trinity Rd	Roots
1/23/2025	1015	1015	Lower Little Sugar Creek	No	2227 Wensley Dr	Pipe Failure
1/23/2025	39	0	Upper Little Sugar Creek	No	3478 N Davidson St	Grease
1/24/2025	5680	5680	Briar Creek	No	3731 Barclay Downs Dr	Pipe Failure
1/27/2025	900	450	McAlpine Creek	No	6217 Glenridge Rd	Roots
2/3/2025	4900	2450	Briar Creek	No	1700 Progress Ln	Grease
2/3/2025	72	0	Steele Creek	No	11327 Wagonford Ln	Grease
2/3/2025	235	0	McAlpine Creek	No	12335 North Community House Rd	Grease
2/5/2025	260	0	Lower Mountain Island Lake	No	12308 Haymarket Rd	Pipe Failure
2/5/2025	325	0	McAlpine Creek	No	8315 Rust Wood Pl	Roots
2/6/2025	564	0	McAlpine Creek	No	12335 North Community House Rd	Grease

2/6/2025	325	325	Stewart Creek (Irwin)	No	2520 Roslyn Av	Pipe Failure
2/6/2025	104	0	Long Creek	No	4501 Keeneland Ln	Grease
2/8/2025	180	0	Upper Little Sugar Creek	No	1935 E Woodlawn Rd	Grease
2/8/2025	1635	1635	Irwin Creek	No	2929 Revolution Park Dr	Other
2/10/2025	275	0	Sugar Creek	No	4109 South Stream Bv	Pipe Failure
2/11/2025	210	105	McKee Creek	No	7401 Finnigan Rd	Grease
2/13/2025	660	660	Briar Creek	No	3830 Ayscough Rd	Other
2/15/2025	1700	850	Four Mile Creek	No	2529 Gray Fox Ln, Matthews	Debris In Line
2/17/2025	2500	2500	Studman Branch	No	15133 High Bluff Ct	Other
2/18/2025	108	0	Lake Norman	No	21205 Pumila Ct, Cornelius	Pipe Failure
2/19/2025	320	200	Upper Little Sugar Creek	No	601 Dawn Cr	Grease
2/20/2025	1270	1270	Upper Little Sugar Creek	No	310 N Tryon St	Grease
2/20/2025	39	0	Upper Little Sugar Creek	No	1504 E Worthington Av	Grease
2/25/2025	190	95	McMullen Creek	No	454 Hunter Ln	Roots
2/26/2025	832	416	Irwin Creek	No	2224 Cindy Ln	Pipe Failure
2/26/2025	120	0	Upper Little Sugar Creek	No	600 E Woodlawn Rd	Other - Contractor Construction Damage
2/26/2025	210	0	Upper Little Sugar Creek	No	1100 Central Av	Pipe Failure
2/27/2025	90	90	Lake Norman	No	18325 Taffrail Wy, Cornelius	Pipe Failure
2/28/2025	165	0	Irwin Creek	No	3557 Crestridge Dr	Grease
3/4/2025	960	960	Mallard Creek	No	3600 W W T Harris Bv	Other - Contractor Construction Damage
3/5/2025	325	250	McDowell Creek	No	19600 School St, Cornelius	Debris In Line
3/8/2025	240	0	Steele Creek	No	10148 Orchard Grass Ct	Grease
3/8/2025	392	392	Clarke Creek	No	14566 Greenpoint Ln, Huntersville	Roots

3/9/2025	120	120	Four Mile Creek	No	5514 Piper Glen Dr	Roots
3/10/2025	150	150	Walkers Branch	No	13500 S Tryon St	Grease
3/16/2025	150	150	Briar Creek	No	1805 Industrial Center Cr	Grease
3/18/2025	430	215	Briar Creek	No	205 Meadowbrook Rd	Other
3/21/2025	900	450	Briar Creek	No	205 Meadowbrook Rd	Other
3/21/2025	540	500	Campbell Creek (McAlpine)	No	5917 Albemarle Rd	Grease
3/22/2025	630	0	Campbell Creek (McAlpine)	No	6208 E W T Harris Bv	Grease
3/25/2025	425	300	Irwin Creek	No	2431 Carmine St	Pipe Failure
3/28/2025	112	0	Mallard Creek	No	6626 Mallard Creek Rd.	Grease
3/28/2025	42	0	Irwin Creek	No	1420 Lasalle St	Pipe Failure
3/29/2025	300	0	Upper Little Sugar Creek	No	5929 Amberly Ln	Grease
4/2/2025	127	0	Irvins Creek	No	4004 Singletree Rd, Mint Hill	Roots
4/2/2025	990	100	Rocky River	No	695 South St, Davidson	Debris In Line
4/4/2025	93	93	Catawba River	No	11026 Lochmere Rd	Other - Contractor Construction Damage
4/5/2025	385	385	Campbell Creek (McAlpine)	No	7001 Snow Ln	Other
4/7/2025	740	370	Stewart Creek (Irwin)	No	1037 Swearngan Ridge Ct	Vandalism
4/8/2025	3360	1680	Catawba River	No	3729 Performance Rd	Other - Contractor Construction Damage
4/17/2025	55	25	Briar Creek	No	2539 Forest Dr	Roots
4/19/2025	8150	8150	Mallard Creek	No	8520 Cliff Cameron Dr	Other
4/19/2025	328	0	Briar Creek	No	5501 Carnegie Bv	Roots
4/23/2025	195	100	Steele Creek	No	9506 Steele Meadow Rd	Grease
4/29/2025	665	300	Upper Little Sugar Creek	No	329 Drury Dr	Roots
4/29/2025	106	0	McAlpine Creek	No	5417 Albemarle Rd	Grease

4/30/2025	600	600	Coffey Creek	No	5040 Limelight Ln	Other - Contractor Construction Damage
4/30/2025	1205	1205	Six Mile Creek	No	9546 Scotland Hall Ct	Roots
5/2/2025	276	0	Stewart Creek (Irwin)	No	701 Lawton Rd	Pipe Failure
5/8/2025	1070	1070	Paw Creek	No	1112 Browns Av	Debris In Line
5/9/2025	7200	7200	Catawba River	No	3701 Performance Rd	Inflow and Infiltration
5/12/2025	585	585	Doby Creek	No	901 Doby Springs Dr	Roots
5/19/2025	94	20	Sugar Creek	No	2202 Silver Crescent Dr	Debris In Line
5/21/2025	1945	740	Torrence Creek	No	304 Greenway St, Huntersville	Roots
5/23/2025	720	0	Stewart Creek (Irwin)	No	343 S Crigler St	Grease
5/23/2025	760	0	Steele Creek	No	10609 Ned Ct	Debris In Line
5/28/2025	96	96	McDowell Creek	No	14402 Laurel Tree Ln, Huntersville	Roots
5/30/2025	43	0	McDowell Creek	No	203 Abingdon Cr, Huntersville	Roots
6/3/2025	300	300	Four Mile Creek	No	9951 Providence Forest Ln	Grease
6/4/2025	78	78	Briar Creek	No	6210 Delham Dr	Pipe Failure
6/7/2025	40	0	McDowell Creek	No	9339 Standerwick Ln, Huntersville	Roots
6/8/2025	684	684	Toby Creek	No	325 W Rocky River Rd	Roots
6/15/2025	60	0	Lower Little Sugar Creek	No	7440 Quail Meadow Ln	Roots
6/16/2025	2648	2648	Lower Little Sugar Creek	No	1601 Archdale Dr	Pipe Failure
6/27/2025	120	80	Briar Creek	No	5600 The Plaza	Debris In Line

TOTAL NUMBER OF FY 2025 COLLECTION SYSTEM SPILLS:

147

Volume Safely Collected, Treated & Discharged During Fiscal Year 2025: 31,962,000,000 Gallons (99.99%)
Volume Spilled: 913,968.5 Gallons

VI. Permit Compliance and Reporting Violations, by plant

Ashe Plantation WWTP -- NPDES Permit #NC0065749

MONTH	PERMIT LIMIT VIOLATIONS	REPORTING REQUIREMENT VIOLATIONS
July, 2024	None	None
August, 2024	None	None
September, 2024	None	None
October, 2024	None	None
November, 2024	None	None
December, 2024	None	None
January, 2025	None	None
February, 2025	None	None
March, 2025	None	None
April, 2025	None	None
May, 2025	None	None
June, 2025	None	None

Irwin Creek WRRF -- NPDES Permit #NC0024945

MONTH	PERMIT LIMIT VIOLATIONS	REPORTING REQUIREMENT VIOLATIONS
July, 2024	None	None
August, 2024	None	None
September, 2024	None	None
October, 2024	None	None
November, 2024	None	None
December, 2024	None	None
January, 2025	None	None
February, 2025	None	None
March, 2025	None	None
April, 2025	None	None
May, 2025	None	None
June, 2025	None	None

Mallard Creek WRRF -- NPDES Permit #NC0030210

MONTH	PERMIT LIMIT VIOLATIONS	REPORTING REQUIREMENT VIOLATIONS
July, 2024	None	None
August, 2024	None	None
September, 2024	None	None
October, 2024	None	None
November, 2024	None	None
December, 2024	None	None
January, 2025	None	None
February, 2025	None	None
March, 2025	None	None
April, 2025	None	None
May, 2025	None	None
June, 2025	None	None

McAlpine Creek WWMF -- NPDES Permit #NC0024970

MONTH	PERMIT LIMIT VIOLATIONS	REPORTING REQUIREMENT VIOLATIONS
July, 2024	None	None
August, 2024	None	None
September, 2024	None	None
October, 2024	None	None
November, 2024	None	None
December, 2024	None	None
January, 2025	None	None
February, 2025	None	None
March, 2025	None	None
April, 2025	None	None
May, 2025	None	None
June, 2025	None	None

McDowell Creek WRRF -- NPDES Permit #NC0036277

MONTH	PERMIT LIMIT VIOLATIONS	REPORTING REQUIREMENT VIOLATIONS
July, 2024	None	None
August, 2024	None	None
September, 2024	None	None
October, 2024	None	None
November, 2024	None	None
December, 2024	None	None
January, 2025	None	None
February, 2025	None	None
March, 2025	None	None
April, 2025	None	None
May, 2025	None	None
June, 2025	None	None

Sugar Creek WRRF -- NPDES Permit #NC0024937

MONTH	PERMIT LIMIT VIOLATIONS	REPORTING REQUIREMENT VIOLATIONS
July, 2024	None	None
August, 2024	None	None
September, 2024	None	None
October, 2024	None	None
November, 2024	None	None
December, 2024	None	None
January, 2025	None	None
February, 2025	None	None
March, 2025	None	None
April, 2025	None	None
May, 2025	None	None
June, 2025	None	None