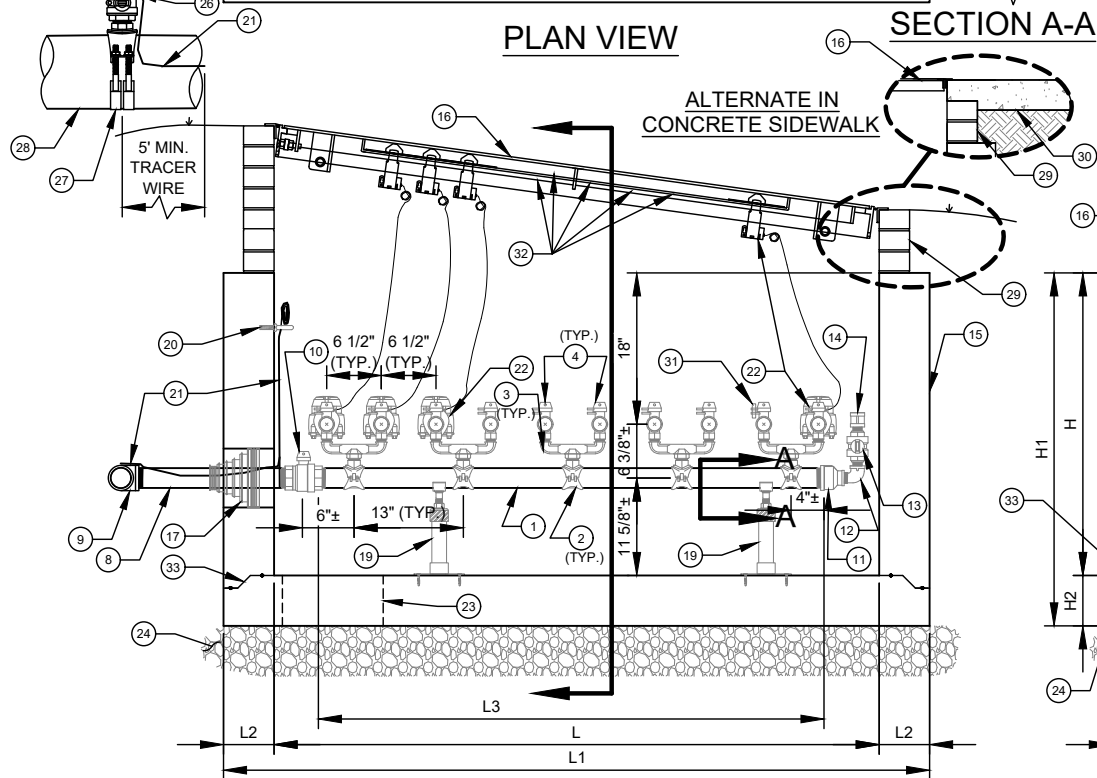


PLAN VIEW



ELEVATION VIEW

SECTION A-A

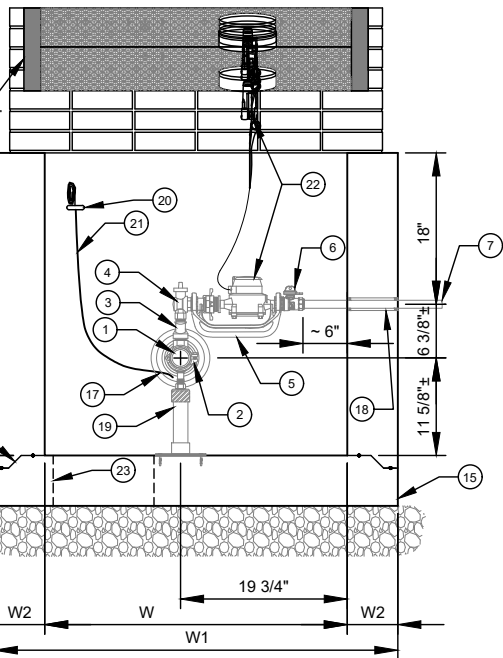
ALTERNATE IN
CONCRETE SIDEWALK

NO. ALTERNATE DESCRIPTION:

- WHEN USING SDR9 HDPE (IPS) WITH STAINLESS STEEL, BRASS, OR BRONZE MNPT ENDS, USE THE FOLLOWING PRODUCTS:
- 2" - 90° SCH. 40 BRASS OR S.S. BEND - FNPT X FNPT.
 - 2" SDR9 HDPE (POLY) IPS PIPE (MNPT X MNPT) - LENGTH AS REQUIRED (NO JOINTS PERMITTED).
 - FOR EXISTING MAINS - 2" BALL CORPORATION STOP W/ TEE HEAD OPERATING NUT - CC (TAPER THREAD) X FNPT (W/ STD. VALVE BOX ASSEMBLY) OR; FOR NEW MAINS - MJ TEE, MJ PLUG - TAP - 2", 2" X 6" SCH 40 RED BRASS NIPPLE, 2" GATE VALVE W/ TEE HEAD OPERATING NUT (FNPT) (WITH STANDARD VALVE BOX ASSEMBLY).

NOTES:

- ACCESS DOOR SHALL BE ANCHORED TO VAULT OR SIDEWALK PER ACCESS DOOR STANDARD DETAIL.
- ACCESS DOOR SHALL BE FLUSH WITH GROUND OR SIDEWALK, AND GROUND SHALL SLOPE AWAY FROM VAULT.
- SEE MULTIPLE WATER SERVICES - SCHEMATIC STANDARD DETAIL FOR ADDITIONAL LAYOUT REQUIREMENTS AND OPTIONS.
- ASSEMBLY MAY BE FLIPPED 180° TO MEET SITE REQUIREMENTS.



SIDE ELEVATION VIEW

NO. DESCRIPTION:

- 2" SCH. 40 RED BRASS PIPE MNPT (LENGTH = L3).
- 2" X 1" BRASS SERVICE SADDLE - FNPT OUTLET.
- 1" X 3/4" X 3/4" BRASS U-BRANCH - MNPT.
- 5/8" X 3/4" ANGLE BALL VALVE WITH LOCK WINGS - FNPT X YOKE STAR NUT.
- 5/8" DUCTILE IRON METER YOKE BAR.
- 5/8" STRAIGHT BALL VALVE (YOKE STAR NUT X FNPT).
- 3/4" RED BRASS NIPPLE WITH THREADED END (L = 18").
- 2" SCH. 40 RED BRASS PIPE MNPT (L = 24").
- 2" - 90° BRASS BEND - FNPT X CTS COMPRESSION.
- 2" BALL VALVE CURB STOP W/ TEE HEAD OPERATING NUT - FNPT X FNPT.
- 2" X 1" BRASS REDUCER - FNPT X FNPT.
- 1" BRASS 90° STREET ELBOW - MNPT X FNPT.
- 1" BALL VALVE CURB STOP - MNPT X MNPT WITH LOCK WINGS (LOCK CLOSED WITH PERMANENT BLUE PAD LOCK FURNISHED BY CLTW).
- 1" RED BRASS THREADED COUPLING - FNPT X FNPT.
- PRECAST CONCRETE METER VAULT - SEE CHART FOR SIZE.
- MANIFOLD HOT DIP GALV. STEEL ACCESS DOOR - SEE DETAIL.
- 2" FLEXIBLE PIPE CONNECTOR BOOT (**DO NOT FILL WITH MORTAR**).
- 1 1/2"Ø - SCH 40 PVC SLEEVE (WITH RUBBER ISOLATION BUSHING AT EACH FACE OF VAULT WALL) OR FOAM RUBBER PIPE INSULATION THROUGH SLEEVE.
- GALV. STEEL OR S.S. ADJUSTABLE SADDLE PIPE SUPPORT (NUMBER REQ'D = N1) WITH 1/4"± THICK NEOPRENE LINER (WITH STAINLESS STEEL EPOXY ANCHORS).
- 3/8" DIAMETER STAINLESS STEEL EYE BOLT (EPOXY ANCHOR).
- AWG #12 GAUGE COPPER TRACER WIRE - WITH BLUE INSULATION (30 MILS HDPE) - TERMINATE WITH 24" EXCESS WIRE (COILED) @ EYE BOLT AND VALVE BOX (TYPICAL).
- 5/8" WATER METER WITH AMR TRANSMITTER (FURNISHED BY CLTW).
- 12" DIAMETER SUMP HOLE.
- 6" #57 WASHED STONE.
- 2" TYPE K COPPER (NO JOINTS PERMITTED).
- FOR EXISTING MAINS - 2" BALL CORPORATION STOP - WITH T-HEAD OPERATING NUT - CC (TAPER TREAD) X CTS COMPRESSION (WITH STANDARD VALVE BOX ASSEMBLY), OR; FOR NEW MAINS - MJ TEE, MJ PLUG - TAP - 2", 2" X 6" SCH 40 RED BRASS NIPPLE, 2" GATE VALVE W/ TEE HEAD OPERATING NUT (FNPT) (WITH STANDARD VALVE BOX ASSEMBLY), BRASS STRAIGHT CONNECTOR (MNPT X CTS COMPRESSION) MUELLER #H-15428, FORD #C84-77GJ, McDONALD #24753T.
- SERVICE SADDLE - CC (TAPER THREAD OUTLET).
- 6" OR LARGER WATER MAIN.
- PRECAST CONC. RISER OR BRICKWORK MAY BE REQUIRED FOR GRADE ADJUSTMENTS. MAX HEIGHT SHALL BE 12".
- CAST IN PLACE CONCRETE SIDEWALK - BRICK WORK SHALL NOT EXTEND TO SURFACE, ACCESS DOOR SHALL REST ON SIDEWALK.
- UNUSED SERVICES SHALL BE LOCKED (LOCK (BLUE SERIAL NO.) FURNISHED BY CLTW) IN CLOSED POSITION.
- FOR EACH WATER METER, ATTACH AN ENGRAVED LABEL DIRECTLY ABOVE THE METER/ALIGNED WITH THE TRANSMITTER, INCLUDING THE PREMISE NUMBER, STREET NUMBER/UNIT NUMBER AND STREET NAME, TO UNDERSIDE OF DOOR.
- TWO ROWS OF JOINT SEALANT AS SHOWN IF TWO PIECE CONSTRUCTION. MONOLITHIC CONSTRUCTION IS ACCEPTABLE.

DESIGN REQUIREMENTS:

- VAULT SHALL BE RATED FOR NCDOT HS-20 LOADING - SUBMIT SHOP DRAWING / CALCULATIONS / P.E. SEALED FOR REVIEW.
- ALL CONCRETE SHALL BE MINIMUM 4,000 PSI COMPRESSIVE STRENGTH.
- DESIGN SHALL CONFORM TO ASTM C858 - SPECIFICATIONS FOR "UNDERGROUND PRECAST CONCRETE UTILITY STRUCTURE."
- STEEL REINFORCING DESIGN SHALL CONFORM TO ASTM C857.
- REBARS SHALL BE GRADE 60 PER ASTM A615.
- WELDED WIRE FABRIC SHALL CONFORM TO ASTM A185.
- PIPE PENETRATIONS SHALL BE ISOLATED FROM PIPE WITH FLEXIBLE CONNECTERS (MANHOLE BOOTS) OR WITH RUBBER ISOLATION BUSHINGS.
- PRECAST VAULT COMPONENTS SHALL HAVE MARKINGS PER ASTM C478 REQUIREMENTS.

DIMENSIONS (INCHES)

VAULT (INSIDE)			VAULT (OVERALL-MIN.)			WALL THICKNESS (MIN.)	FLOOR THICKNESS (MIN.)	NUMBER OF METERS (MAX.)	L3 2" RED BRASS PIPE LENGTH NO. 1	N1 REQ'D NO. OF PIPE SUPPORTS NO. 19		
L	W	H	L1	W1	H1	W2 / L2	H2				L4	L5
72	36	36	84	48	42	6	6	10	60	2	6.5	7
60	36	36	72	48	42	6	6	8	48	2	7	7.5
48	36	36	60	48	42	6	6	6	36	2	7.5	8
36	36	36	44	44	40	4	4	4	24	1	8	8.5