

Underground Utility

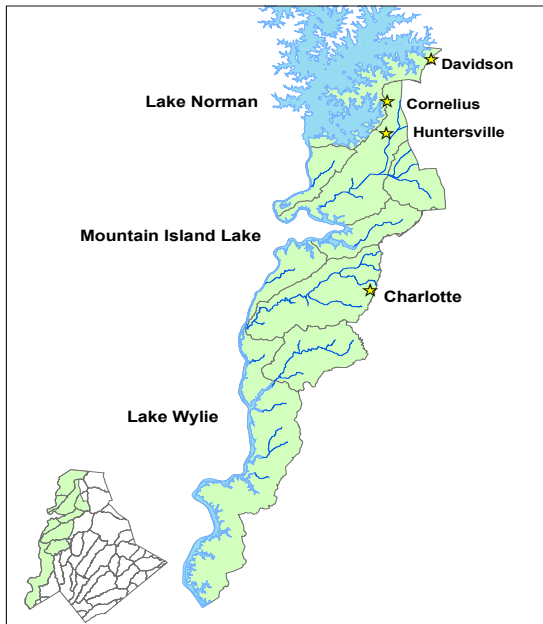
Stormwater Best Management Practices

Protect creeks and lakes.
Avoid fines for polluting.



Map of Critical Watersheds

Attention Underground Utility Contractors working in the Critical Watersheds!



The Critical Watershed areas of Mecklenburg County drain directly to lakes which are used for drinking water, swimming, and recreation. Special care and attention should be given when drilling in these areas. Damage to sanitary sewer lines will likely cause environmental and health impacts to the lake and prompt swimming advisories to be issued.

Best Management Practices

- ✓ **Always** call 811 for location services prior to beginning work.
- ✓ **Never** drill without underground utilities being located first.
- ✓ **Always** hand dig first to locate utilities prior to using mechanical equipment.
- ✓ **Maintain** a minimum drilling depth of at least 8 feet in order to minimize the risk of hitting sanitary sewer lines.
- ✓ **Prevent** drilling slurry from entering catch basins and discharging into streams and lakes.
- ✓ **Report** any damaged sanitary sewer or water lines to Charlotte Water immediately by calling (704) 378-6632.
- ✓ **Report** any discharges to storm drains, streams, or lakes by calling 311.
- ✓ **Train** all staff regarding these practices.

Potential Fines

- ✓ Potential fines of up to \$10,000 per day. Repeat violators will receive higher fines.
- ✓ Contractor is potentially responsible for all repair costs associated with damaged utility lines, public and private property.
- ✓ Contractor is potentially responsible for all administrative costs associated with monitoring, sampling, and swimming advisories that may result from sewer discharges.

Mecklenburg County and the City of Charlotte are committed to ensuring that our programs, services and activities are accessible to all. Upon request, auxiliary aids, written materials in alternative formats, language access and other reasonable modifications will be provided. To make a request, please contact stormwater@mecknc.gov or 980-314-3218.



Storm Drains are for Rain Only



Stormwater goes directly to our creeks and lakes without treatment. Pollution that washes away with rain and enters storm drains is called stormwater pollution.

Preventing stormwater pollution is important for:



Drinking Water



Recreation



Fish & Wildlife



Quality of Life

Pollution isn't just bad for the environment—it's illegal.

*You can be fined up to **\$10,000** per day, per event.*

**Report Spills and Stormwater Pollution to
311 or (704) 336-7600**

For more information, visit StormWater.CharMeck.org.

