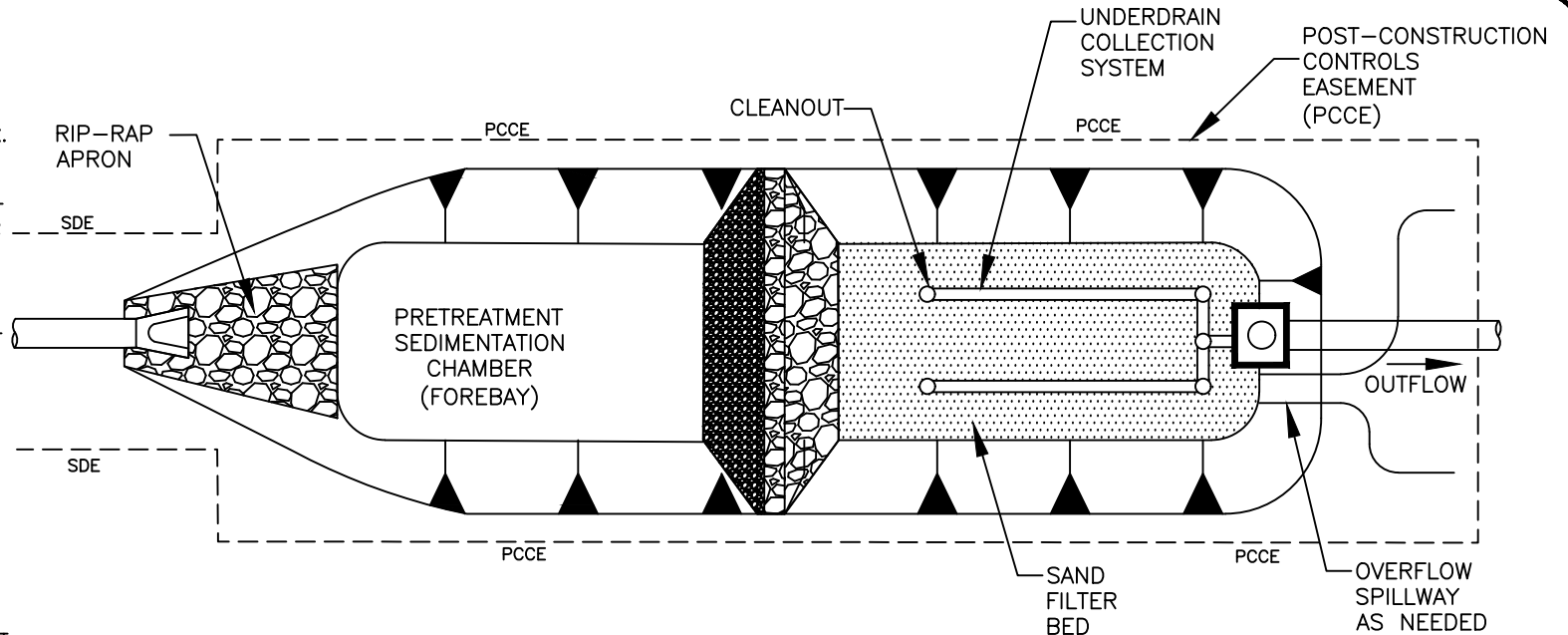
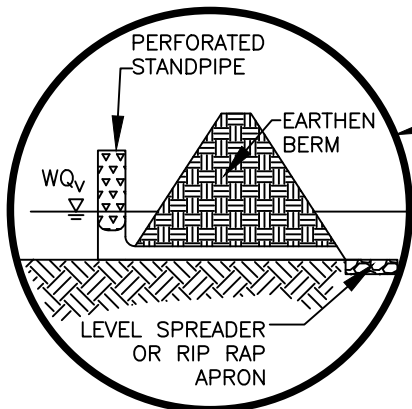


# NOTES:

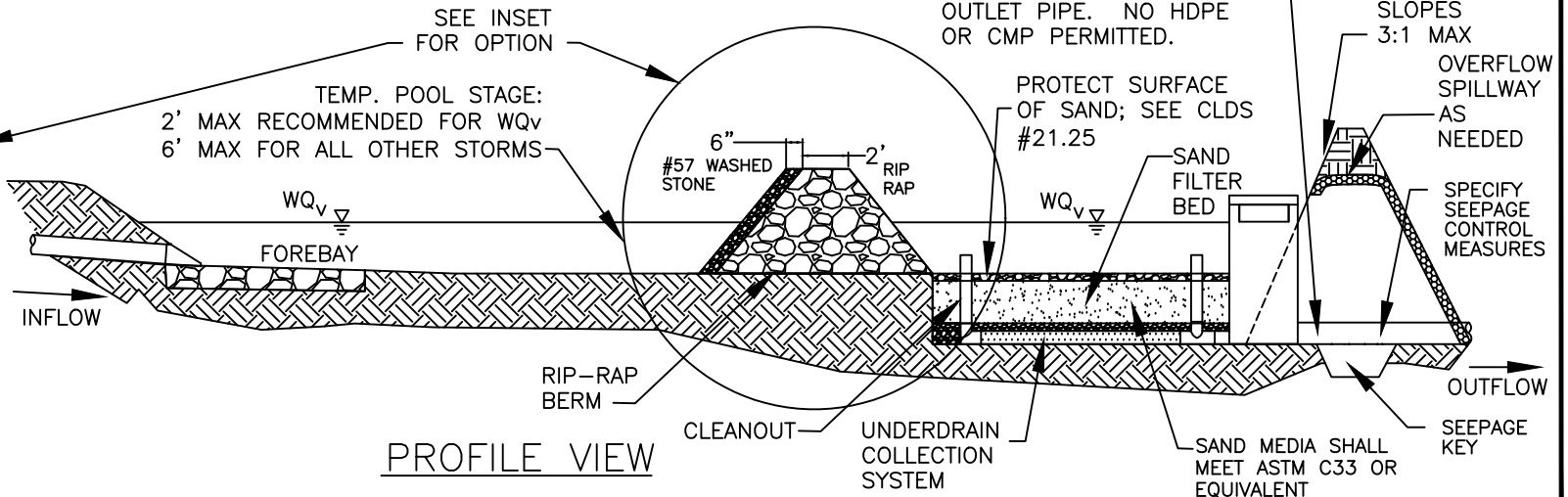
- ALL SAND FILTERS SHALL HAVE A MINIMUM 20 FOOT ACCESS EASEMENT CONNECTING TO A DEDICATED PUBLIC RIGHT OF WAY. ACCESS ROAD SHALL HAVE MIN. 12' STABILIZED WIDTH, MAX. LONG. GRADE OF 15%, MAX. CROSS-SLOPE 5%. IN ADDITION, A 10-FOOT WIDE PERMANENT MAINTENANCE ACCESS EASEMENT MUST BE PROVIDED AROUND THE PERIMETER OF ALL BMPs TO ALLOW FOR ADEQUATE MAINTENANCE AND REPAIR.
- ALL DRAINAGE AREAS TO A SAND FILTER FACILITY ARE TO BE STABILIZED PRIOR TO INSTALLATION OF SAND.
- CLEAN OUTS IN THE UNDERDRAIN SYSTEM ARE TO BE PROVIDED EVERY 50' MINIMUM, AT ALL BENDS, AND ENDS OF THE SYSTEM FOR MAINTENANCE PURPOSES. CLEAN OUTS SHALL HAVE WATER TIGHT, VANDAL-PROOF CAPS AND EXTEND 6" ABOVE THE SURFACE.
- DEMONSTRATION OF APPROPRIATE SAFETY FACTORS AGAINST FAILURE THROUGH GEOTECHNICAL ANALYSIS BY A LICENSED PROFESSIONAL ENGINEER SHALL BE REQUIRED FOR EMBANKMENT SLOPES STEEPER THAN 3:1.
- WATER-TIGHT SEAL MUST BE PROVIDED BETWEEN ALL RISER AND PIPE JOINT CONNECTIONS.



## PLAN VIEW



## INSET



## PROFILE VIEW



CITY OF CHARLOTTE  
LAND DEVELOPMENT STANDARDS  
INCLUDES CHARLOTTE ETJ

## SURFACE SAND FILTER

NOT TO SCALE

STD. NO.	REV.
21.24	24