

- (H) 2'-6" OR 2'-0" STANDARD CURB AND GUTTER, STD. PER 10.17A
- (M) SAFETY RAIL, STD. 50.04A & 50.04B
- (S) CONCRETE SIDEWALK, STD. 10.22 OR SHARED USE PATH, STD. 10.42
- (H1) 2'-0" VALLEY GUTTER. STD. 10.17B
- (H2) CURB TRANSITION STANDARD CURB AND GUTTER TO 2'-0" VALLEY GUTTER, STD. 10.19

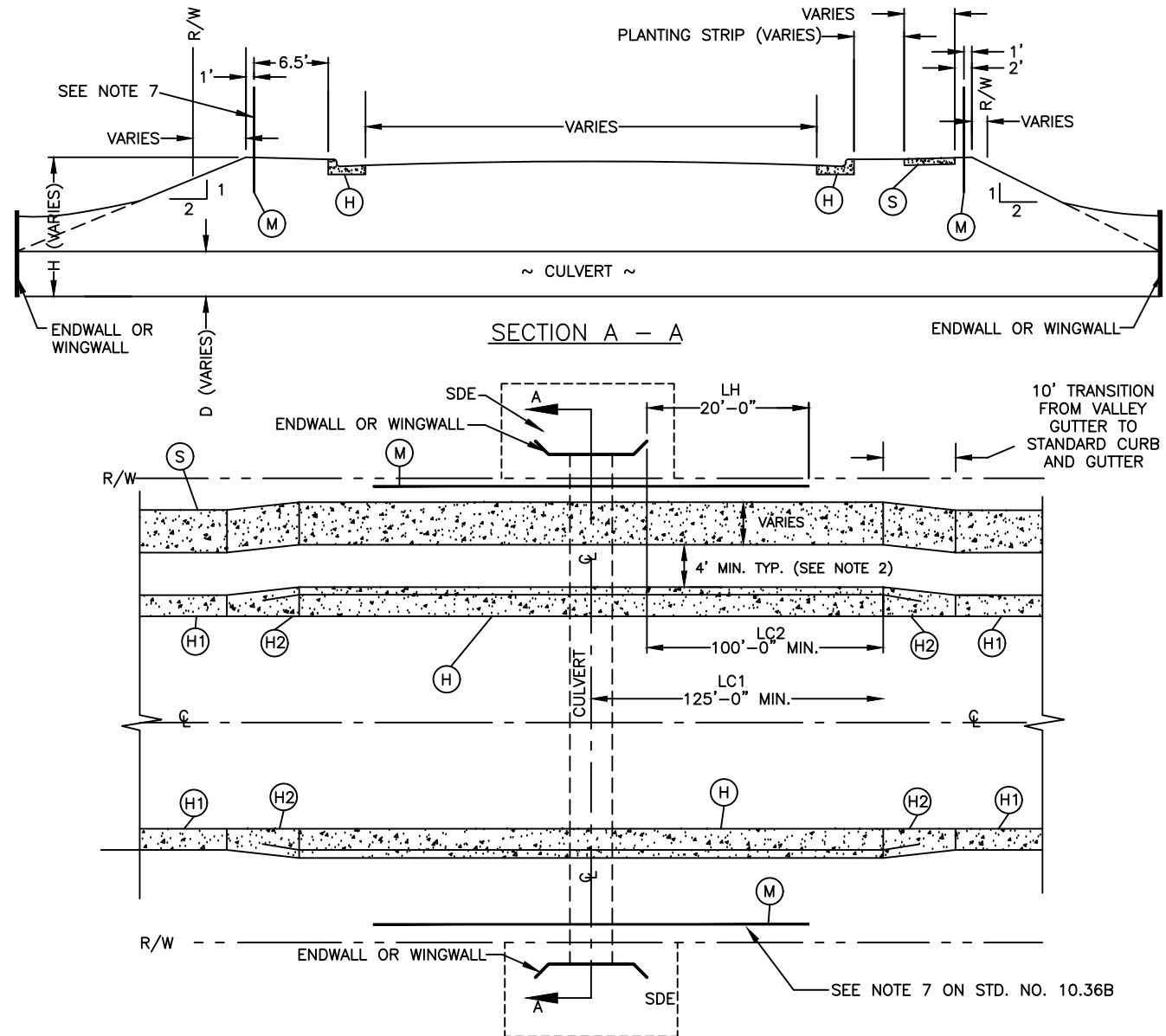
LH = DISTANCE FROM END OF WINGWALL TO END OF SAFETY RAIL.

LC1 = DISTANCE FROM \mathcal{C} OF CULVERT TO END OF 2'-6" CURB AND GUTTER GUTTER.

LC2 = DISTANCE FROM END OF WINGWALL TO END OF 2'-6" CURB AND GUTTER.

NOTES:

1. SEE STD. NO. 10.36B FOR GENERAL NOTES AND CLEAR ZONE DISTANCES.
2. AN ALTERNATIVE FOR STREETS WITH WIDER PLANTING STRIPS AND SIDEWALKS: IN LIEU OF A PLANTING STRIP ALONG THE CULVERT CROSSING, PROVIDE A MINIMUM 8-FOOT WIDE SIDEWALK LOCATED AT THE BACK OF CURB, FOR LENGTH "LC1" ON EITHER SIDE OF THE CULVERT CENTERLINE.



NOT TO SCALE



CITY OF CHARLOTTE
LAND DEVELOPMENT STANDARDS
INCLUDES CHARLOTTE ETJ

CULVERT CROSSINGS ON RESIDENTIAL AND COMMERCIAL STREETS

STD. NO.	REV.
10.36A	24