



FAITH HOUSING SUMMIT

Breakout 2:
Exploring Land Options
with Matt Conner, Newell Presbyterian Church

Breakout 2: Case Studies by Resource

Exploring Land Options

Room 211

Room 211 is by the
Registration Table

Exploring Capital Options

Room 207A

Exploring New Uses for Old Buildings

Room 207 D

Exploring the Power of Community

Room 207 BC

A photograph of a modern kitchen and living area, overlaid with a semi-transparent teal color. The kitchen features light-colored cabinets, a white countertop, and a central island with a white countertop and three black bar stools. A refrigerator is visible on the left, and a dining table with plates is set on the island. The living area includes a light-colored sofa, a coffee table, and a potted plant. The word "Welcome" is written in large, white, sans-serif font across the center of the image.

Welcome

Agenda

1:25 pm	Welcome
1:35	Overview Presentation
1:50	Q&A
2:00	Table Discussions
2:15	Group Debrief
2:25	Return to Plenary Room 209 for Closing Session

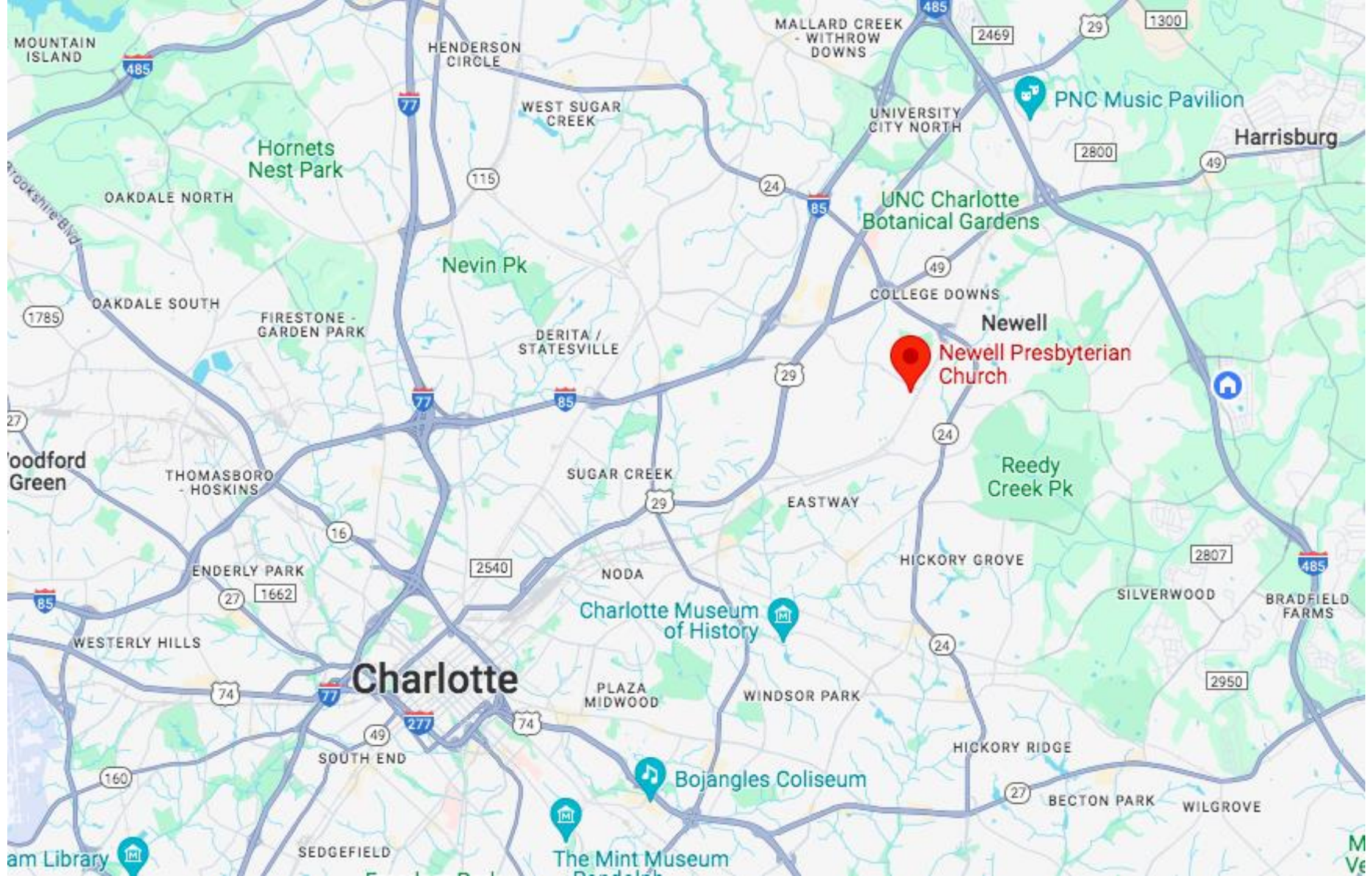
“Faith and Housing” Spring 2024

Faith-Based Development Initiatives—
Utilizing buildings, **land**, people, and capital to address
the affordable housing crisis in the city of Charlotte.

Newell Presbyterian Church

We are a congregation of the Presbyterian Church (USA) in the Newell/University City area of Charlotte, and we strive to be a community of faith that takes seriously our call to follow Jesus in our daily lives. We do so by showing authentic hospitality to all, actively engaging Scripture and the realities of life, and humbly serving God, our community, and the world. We don't always do these things perfectly, but we love and support one another as a church family along the way.

“A place to grow in your faith and to belong!”



Newell Presbyterian Church

Charlotte

PNC Music Pavilion

UNC Charlotte Botanical Gardens

Charlotte Museum of History

Bojangles Coliseum

The Mint Museum

Hornets Nest Park

Nevin Pk

Reedy Creek Pk

MOUNTAIN ISLAND

HENDERSON CIRCLE

MALLARD CREEK - WITHROW DOWNS

UNIVERSITY CITY NORTH

Harrisburg

OAKDALE NORTH

OAKDALE SOUTH

FIRESTONE - GARDEN PARK

DERITA / STATESVILLE

COLLEGE DOWNS

Newell

Woodford Green

THOMASBORO - HOSKINS

SUGAR CREEK

EASTWAY

ENDERLY PARK

NODA

HICKORY GROVE

WESTERLY HILLS

Charlotte

PLAZA MIDWOOD

WINDSOR PARK

SILVERWOOD

BRADFIELD FARMS

SOUTH END

HICKORY RIDGE

BECTION PARK

WILGROVE

am Library

SEDFIELD

The Mint Museum

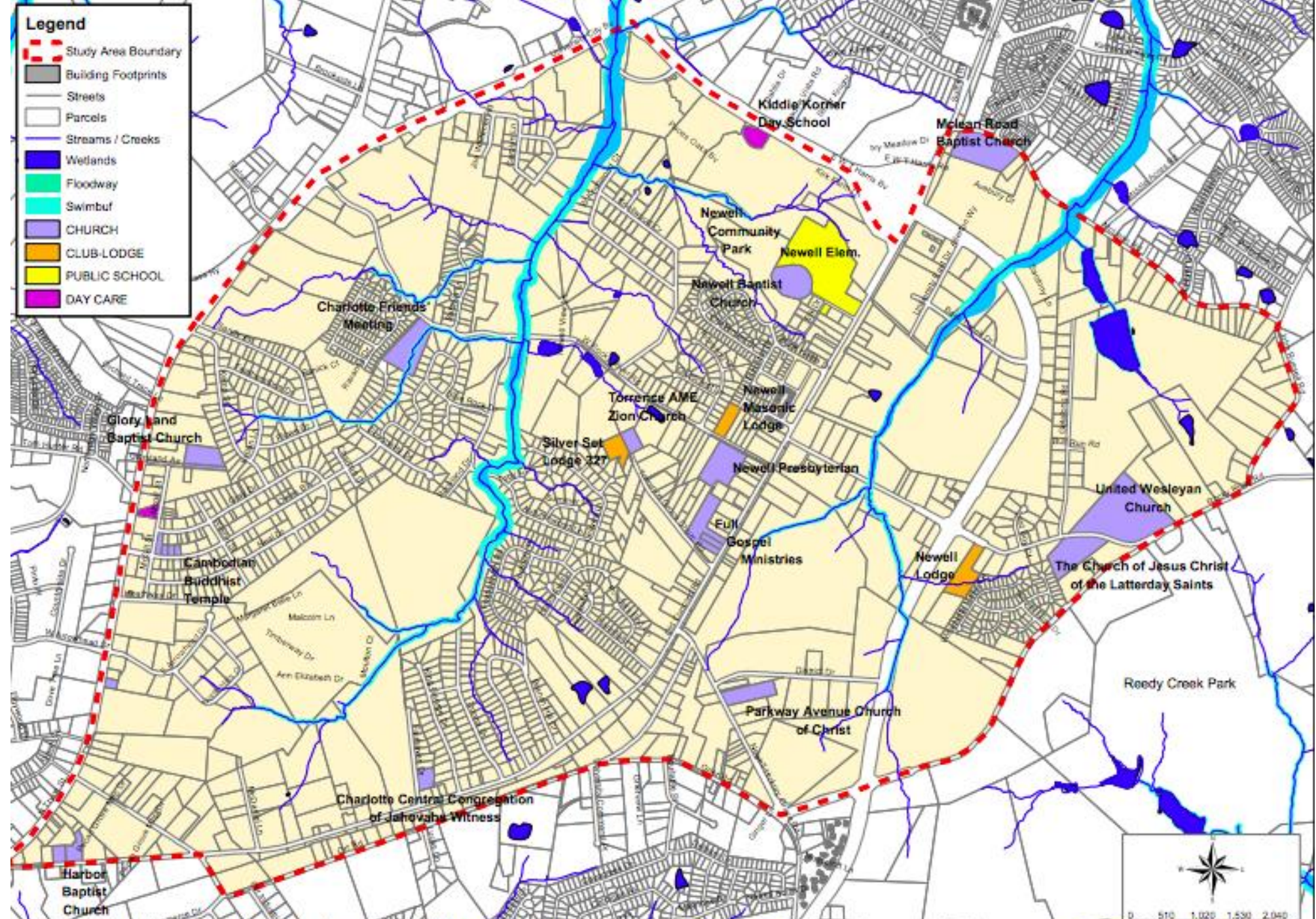
M Ve



The times they are a-changin'



- Legend**
-  Study Area Boundary
 -  Building Footprints
 -  Streets
 -  Parcels
 -  Streams / Creeks
 -  Wetlands
 -  Floodway
 -  Swimbuf
 -  CHURCH
 -  CLUB-LODGE
 -  PUBLIC SCHOOL
 -  DAY CARE



Dreaming Together

Spring 2021– Session participated in a “prayer walk”

“Where there is no vision, the people perish.” (Prov. 29:18)





Dreams for the corner of Rocky River/Old Concord

- Sports Fields
- Community Center
- Retail/Commercial
- Community Garden
- Non-profit Space
- Food and Drink
- UNCC/Campus Ministry
- Park(s)
- Housing
- Or something else...

*What if a church's property could be a space for people to
live, work, play, and pray together?*

Awareness + Relationship + Commitment*

ARC as a way to rise together (*Jemar Tisby, “The Color of Compromise”)

- Awareness:**
- Affordable Housing
 - Barriers to Re-Entry
 - Food insecurity
 - Outdoor green/park space
 - Isolation and Mental Health
 - Monolithic bubbles v. “beloved community”
 - Gun violence/crime
 - Profits over people

Relationships: Who do we know that is *already* engaged in this work?

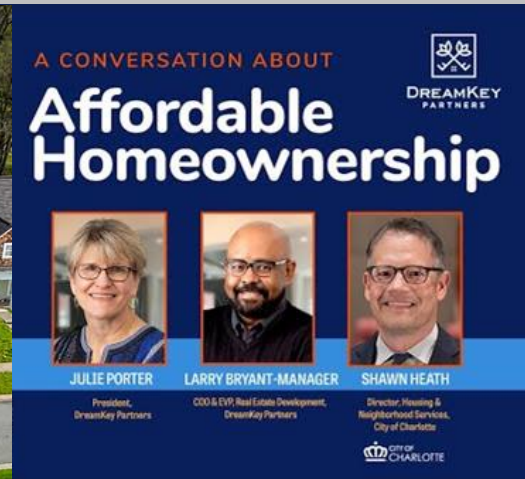
Commitment: What should we actually move on? Why?

Goals

- Stewardship of Property
- Community Development
- Congregational Vitality
- Financial Sustainability



Partnership → Possible





DRUMROLL PLEASE

50 Town Home Site Concept





Village Concepts





Elevation Concepts



50 Town Home Site Concept



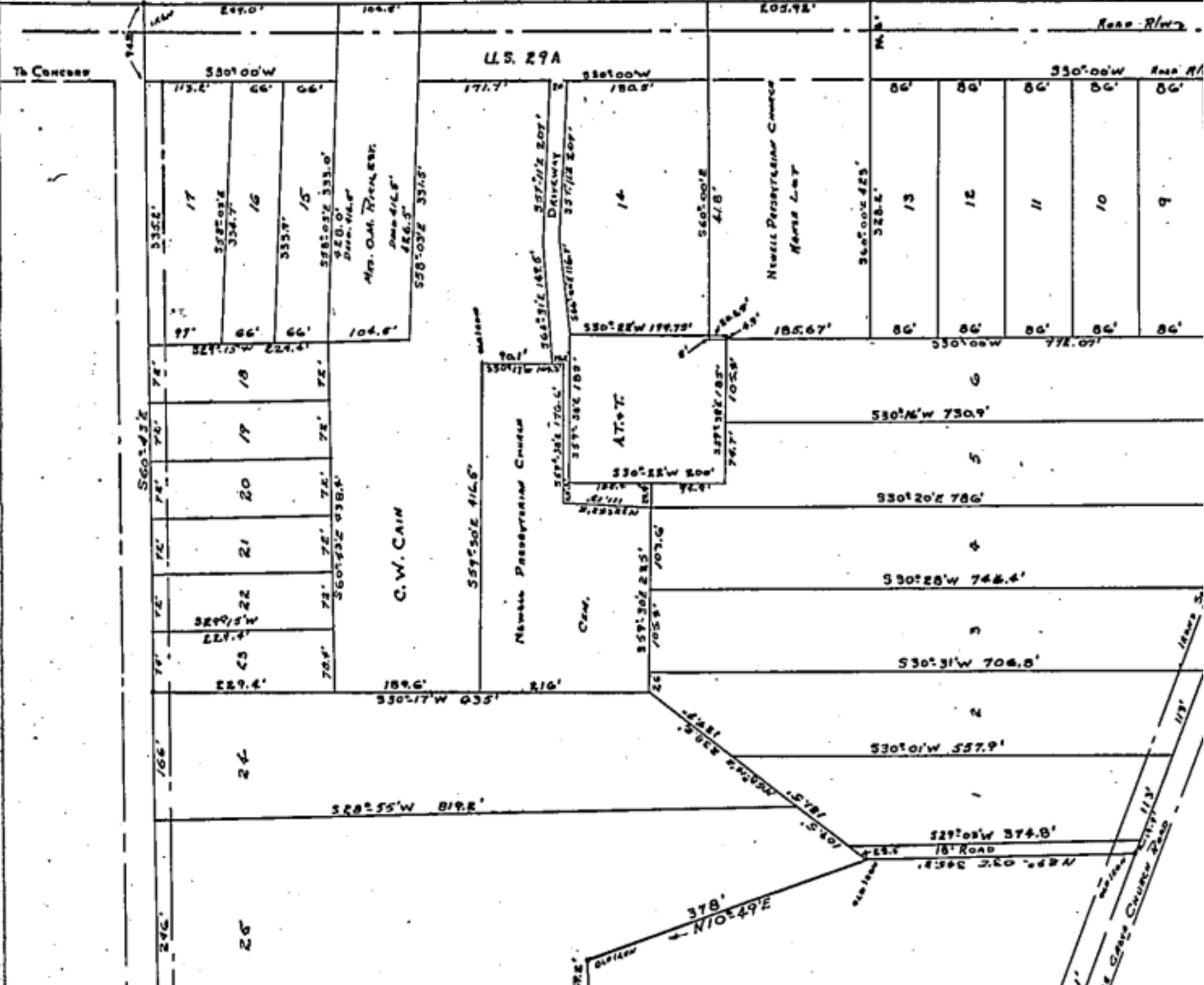
REZONING

NOTICE

704-336-2205
www.rezoning.org

Newell Area Plan (Adopted by City Council in 2002)





C. W. RITCH

JULY 15, 1853

DEC. 31, 1921

NEWELL PIONEER
BLACK SMITH — INVENTOR
OF THE
RITCH HARROW AND STOCK PLOW



WIFE

WOODLEY F. BELL

OCT. 29, 1868

JUNE 20, 1959



Table Discussions

- What are your biggest questions?
- What do you think your next steps might be?
- What kind of resources or support will you need?

Closing Session

Please return to the Plenary Room 209 for the Closing Session.
Program will resume at 2:35 pm.