

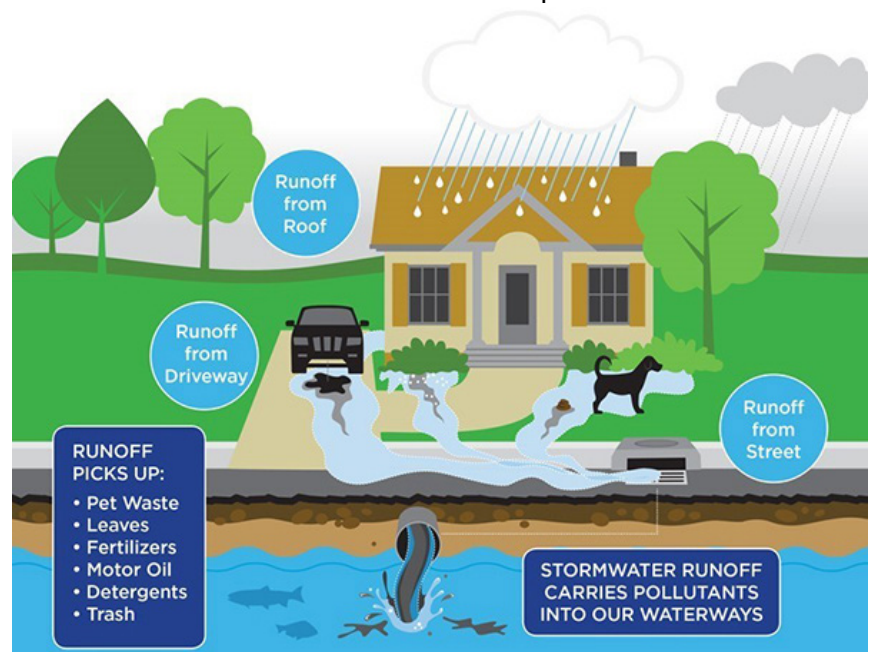
STORMWATER WALK

Stormwater runoff is water from rain or melting snow that doesn't soak into the ground. In a forest, meadow, or other natural landscape, stormwater runoff can soak into the ground and naturally filter through the soil. When natural areas are developed to make room for neighborhoods, shopping centers, roads and other development, we introduce impervious surfaces. Impervious surfaces, such as rooftops, roads, parking lots, and driveways change the way that water flows over and through the land.

As stormwater travels, it picks up pollutants along the way. Stormwater pollution goes into our storm drains and directly to our creeks and lakes, potentially making them unsafe for swimming and creating an unsafe habitat for fish and other animals. Anything that can be carried away by stormwater has the potential to become stormwater pollution.

Take a walk outside and look for things that can positively or negatively impact stormwater.

See how many of the items you can find on the checklist on the back side of this sheet and answer the questions for each item.



Please make safety a priority when searching for these items. Utilize the buddy system, wear brightly colored clothing and obey all traffic rules. Wear sturdy shoes and exercise caution when walking near water or uneven slopes. Minors should be accompanied by an adult.

Looking for more to do? We have a variety of volunteer activities for a wide range of ages! Visit our website StormWater.CharMeck.org to sign up.

Questions? E-mail Sharnelle.Currence@CharlotteNC.gov



Storm Drain



Storm drains are the grates that you see along the curb; they carry stormwater runoff directly to our creeks.

How many storm drains are along your street? Do they have "do not dump" storm drain markers on them?

Creek



Stormwater drains directly to our creeks without being treated at a treatment facility.

What is the creek that is closest to you? Use online maps to locate it.

Wet Pond



Wet ponds collect stormwater for temporary storage and are used to improve water quality.

Check out nearby ponds. Do they look natural or like they were designed to treat stormwater?

Pet Waste Station



Bacteria from pet waste is one of the top pollutants of our creeks.

Have you spotted areas that need more pet waste stations?

Construction & Sediment



Uncontrolled sediment is one of our most common pollutants.

Is the construction site taking measures to keep sediment from entering nearby storm drains?

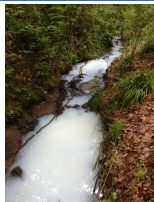
Culvert



A culvert allows stormwater to drain under roads from one side to the other.

For your safety do not enter a culvert. How many culverts can you find near your location?

Pollution



Look for signs of stormwater pollution such as oil near a storm drain or sediment coming from a construction site.

How could this pollution have been prevented?

Roof

Downspout



Downspouts are often directed onto a paved surface, such as a driveway, which sends water directly into the street when it rains.

Does the downspout you see point directly to an impervious surface?

Stormwater Outfall



A stormwater outfall is where a storm drain pipe discharges stormwater runoff to the nearest creek.

What kind of items may be coming out of the stormwater outfall nearest to you?

Sanitary Sewer Manhole



The sanitary sewer system is separate from the storm drainage system. It carries sewage from sinks, toilets, and showers to a wastewater treatment plant. The sewage is treated and released into creeks, lakes, and rivers.

How many manholes are along your street?

Interesting Find



Stormwater management comes in many forms. Can you find a less common item related to stormwater?

Here are a few examples: Green roof, rain barrel, rain garden. Do a quick web search to see what they look like.

Aquatic Life



Stormwater drains directly to our creeks and if polluted can potentially harm aquatic life.

What kind of critters do you think live in our creeks?