

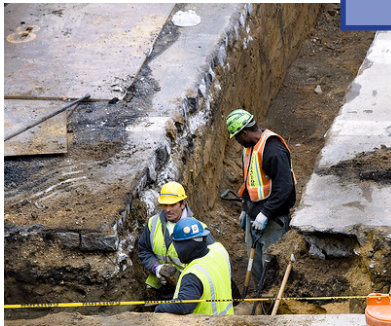
Storm Water Is Important To All Of Us

Throughout Charlotte and Mecklenburg County, storm drains flow directly into our creeks and lakes. That means anything dumped down a storm drain goes directly to our creeks and lakes and can negatively impact water quality.

Storm Water Services has many programs to protect water quality. They include enhancement and restoration of waterways, maintenance of the storm drainage system, enforcement of pollution control regulations and education.



Municipal Contractor Problems



Many practices in different industries have the potential to cause polluted discharges that are harmful to the environment, hazardous to public health and against the law. Common pollutants include sediment, concrete wash, asphalt, oil, fuel, paints, and trash. Storm drains lead directly to a stream or lake without any treatment, so any wastewater dumped into them can be very harmful to water quality and aquatic life.

You may already be implementing many of the best management practices (BMPs) described in this flyer. However, if you discover any potential problem areas, please consider using one or more of the recommended BMPs.

Solutions

Since preventing pollution is much easier than cleaning up after the fact, the City of Charlotte and Mecklenburg County have adopted ordinances for storm water management. These local ordinances prohibit the discharge of any pollutants into the storm drainage system, streams, lakes, or other surface waters.

Following the best management practices for your industry that include the proper handling, storage and disposal of materials can prevent water pollution from your business and prevent fines.



**VIOLATIONS OF THESE ORDINANCES COULD RESULT IN
LOCAL FINES OF UP TO \$10,000 PER DAY, PER EVENT.**



For More Information

To get more information on storm water rules and regulations regarding municipal contractors call 311 or visit StormWater.CharMeck.org and click on "Surface Water Quality" then "Pollution Prevention".

Following the tips in this flyer can help stop storm water pollution.

