



Storm Water Pollution Prevention

Best Management Practices (BMPs) for the Landscape Maintenance Industry

Landscape Maintenance

Storm Water Is Important To All Of Us

Throughout Charlotte and Mecklenburg County, storm drains flow directly into our creeks and lakes. That means anything dumped down a storm drain goes directly to our creeks and lakes and can negatively impact water quality.

Storm Water Services has many programs to protect water quality. They include enhancement and restoration of waterways, maintenance of the storm drainage system, enforcement of pollution control regulations and education.



Landscape Maintenance Industry Problems



Many practices in the landscape maintenance industry have the potential to cause polluted discharges that are harmful to the environment, hazardous to public health and against the law. Common pollutants include yard waste, pesticides, fertilizers, and sediment. Storm drains lead directly to a stream or lake without any treatment, so any wastewater dumped into them can be very harmful to water quality and aquatic life.

You may already be implementing many of the best management practices (BMPs) described in this flyer. However, if you discover any potential problem areas, please consider using one or more of the recommended BMPs.

Solutions

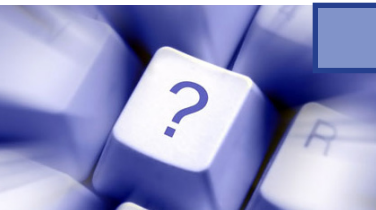
Since preventing pollution is much easier than cleaning up after the fact, the City of Charlotte and Mecklenburg County have adopted ordinances for storm water management. These local ordinances prohibit the discharge of any pollutants into the storm drainage system, streams, lakes, or other surface waters.

Following the best management practices for the landscape maintenance industry that include proper handling, storage and disposal of materials can prevent water pollution from your business and prevent fines.



VIOLATIONS OF THESE ORDINANCES COULD RESULT IN LOCAL FINES OF UP TO \$10,000 PER DAY, PER EVENT.

For More Information



To get more information on storm water rules and regulations regarding the landscape maintenance industry call 311 or visit StormWater.CharMeck.org and click on "Surface Water Quality" then "Pollution Prevention".

Following the tips in this flyer can help stop storm water pollution.



Yard Waste

- ◆ Never dump yard waste along creek banks or into storm drains.
- ◆ Blow leaves and grass clippings back into yards instead of leaving them in the street and sidewalk to wash down the storm drain.
- ◆ Either place yard waste in clear plastic bags and leave by the curb for collection OR compost it. Yard waste may be brought to Compost Central located at 5631 West Blvd. (small fees apply).

Fertilizer & Pesticide Application

- ◆ Avoid applying fertilizers and pesticides near streams, lakes and ponds.
- ◆ Conduct soil tests to determine the proper amount of fertilizer to apply to lawns.
- ◆ Calibrate fertilizer applicators to avoid excessive spreading of fertilizer.
- ◆ Use slow-release fertilizers whenever possible in order to minimize leaching.
- ◆ Before irrigating, sweep fertilizer that has settled on paved areas.
- ◆ Leave grass clippings on lawns as a natural fertilizer.
- ◆ Read and follow label directions and MSDSs for proper use, storage and disposal of fertilizers and pesticides.



Storage & Disposal

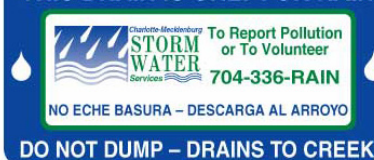
- ◆ Triple rinse containers before disposing of them. Pour the rinse water into landscaped areas where it will absorb into the soil. Never pour the rinse water onto a paved area or into a storm drain.
- ◆ Store containers where they are not exposed to stormwater, and preferably within secondary containment that will capture leaks and spills from containers.

Spills & Leaks

- ◆ When transporting product containers on a vehicle, properly secure the containers to ensure that spills do not occur.
- ◆ Carry spill response materials on business vehicles in case a spill occurs.
- ◆ Do not hose down outside spills. Use absorbent and dry cleanup methods instead.
- ◆ Maintain equipment (tanks, hoses and fittings) to prevent leaks.
- ◆ Report spills and leaks greater than 25 gallons or any amount that enters the storm drain system to 311.



THIS DRAIN IS ONLY FOR RAIN



Employee Training

- ◆ Train all employees upon hiring and each year thereafter.
- ◆ Post these Best Management Practices where employees can see them.
- ◆ Report illegal dumping by calling 311.

Visit StormWater.CharMeck.org and click on "Surface Water Quality" then "Pollution Prevention" for more information.