

SELECTED ALTERNATIVE PUBLIC MEETING



Edgewater-Rosecrest Storm Drainage Improvement Project

Shawn McDonald – Project Manager

Phone - 704-432-0963

Email – shawn.mcdonald@charlottenc.gov

February 21, 2019

WELCOME AND INTRODUCTIONS

Charlotte-Mecklenburg Storm Water Services (CMSWS)

Shawn McDonald – Project Manager

Phone - 704-432-0963

Email – shawn.mcdonald@charlottenc.gov

Doug Lozner – Watershed Area Manager

LaBella Associates

Robby Wayne – Senior Project Manager

HOUSEKEEPING

- **Sign-In Sheet**
- **Customer Service Comment Cards**
- **Time is available for Question and Answer periods after Presentation**

MEETING PURPOSE

Purpose

- Provide a summary of the history and proposed improvements
- Present and explain the remaining project milestones
- Request input from property owners/residents on proposed improvements

AGENDA

- **Charlotte-Mecklenburg Storm Water Services (CMSWS)**
- **Project History**
- **City's Proposed Improvements**
- **Future Project Milestones**
- **General Questions and Answers**
- **Break-Out Groups**

CHARLOTTE-MECKLENBURG STORM WATER SERVICES (CMSWS)

- **Public Utility started in 1993**
- **Funded by Storm Water Fee**
- **Goals Related to this Project**
 - Address storm drainage issues such as road and structure flooding
 - Improve storm drainage infrastructure
- **Design Management Team**
 - Works on repairs and other minor storm drainage issues
 - Issues reported through 311 Citizen Service Requests
 - To meet program eligibility requirements, must include public street runoff and the type of drainage concern must qualify for assistance
- **Engineering Team**
 - Works on larger project areas
 - Multiple or large storm drainage issues exist
 - Issues can not be addressed with minor repairs/replacements

STORM DRAINAGE IMPROVEMENT PROJECT PHASES

PLANNING (Done)

- Existing Conditions Analysis – *Finding the Problems*
- Alternatives Analysis – *Developing Alternative Improvements*
- Proposed Alternative – *Test Proposed Improvements*

DESIGN (Typically 21 to 34 months)

- *Designing the Improvements*

PERMITTING (Typically 3 to 9 months, but overlaps the Design Phase)

- *Federal, State, and Local Approvals*

EASEMENT ACQUISITION (Typically 9 to 12 months)

BID & AWARD (Typically 7 to 8 months)

CONSTRUCTION (Up to 2 years)

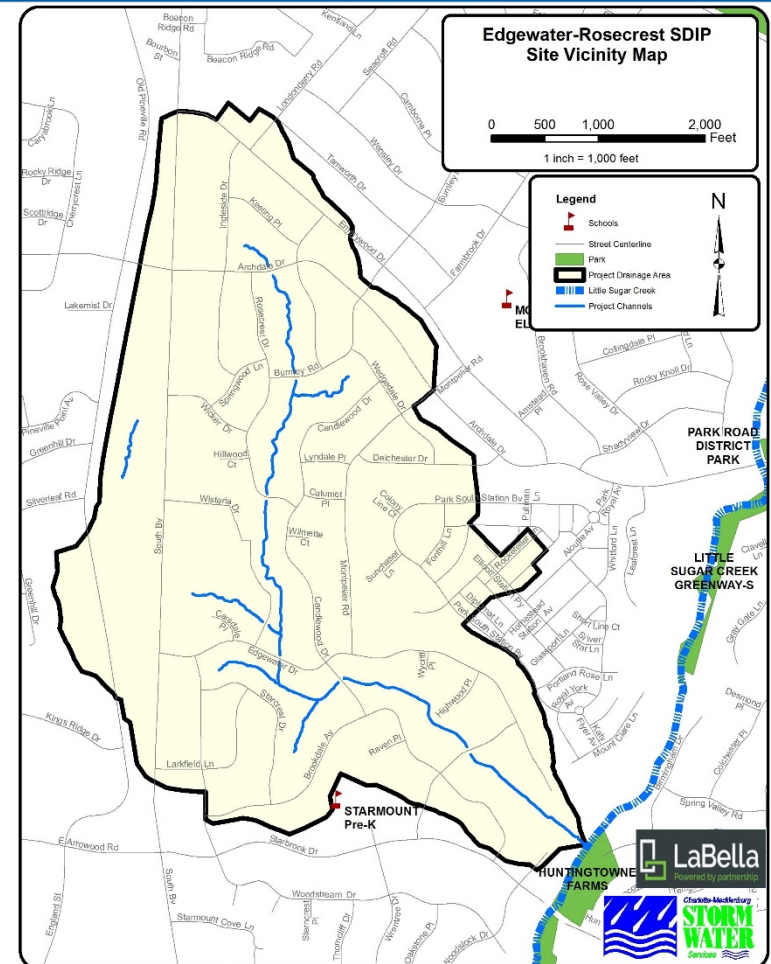
PROJECT HISTORY

Why was the Edgewater-Rosecrest area chosen?

- **Requests for Service from Property Owners**
 - Inadequate and Deteriorating Infrastructure
 - Road and Structure Flooding
 - Old culverts, pipes, inlets
 - Sink Holes
 - Erosion, blockages in channels
- **Larger watershed-wide issues that cannot be managed by spot repairs or without potentially impacting downstream properties**

STUDY AREA

- 472 acres
- Bounded by:
 - Emerywood Drive (north)
 - Starbrook Drive (south)
 - Park South Station Development (east)
 - Old Pineville Road (west)
- System Length
 - 40,000+ feet of drainage system



IMPROVEMENT ALTERNATIVES



1. Public Safety



2. Private Property Impact



3. Public Cost



PROPOSED IMPROVEMENTS

**Improvements
Include:**

Culvert Replacement

Pipe Systems

Channel Stabilization



ANALYSIS

• Hydrologic Analysis

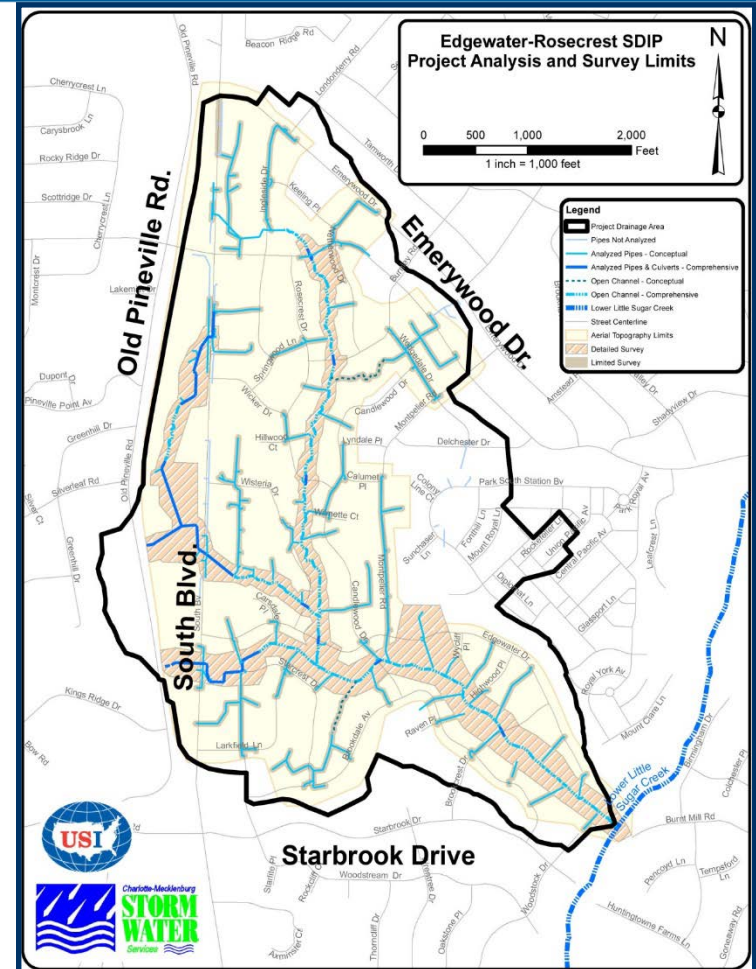
How much storm water runoff?

- Existing Conditions
- Future Conditions

• Hydraulic Analysis

How is the existing system performing under current City Design Standards (CDS)?

- Existing Infrastructure Condition (Age and Condition)
- Potential for Road & Structure Flooding (**Level of Service**)
- Channel Erosion & Instability
- Downstream Impacts



EXISTING CONDITIONS RESULTS

 **Reported Citizen Concerns**

Potential Road Flooding



- Culverts



- Roadway Systems

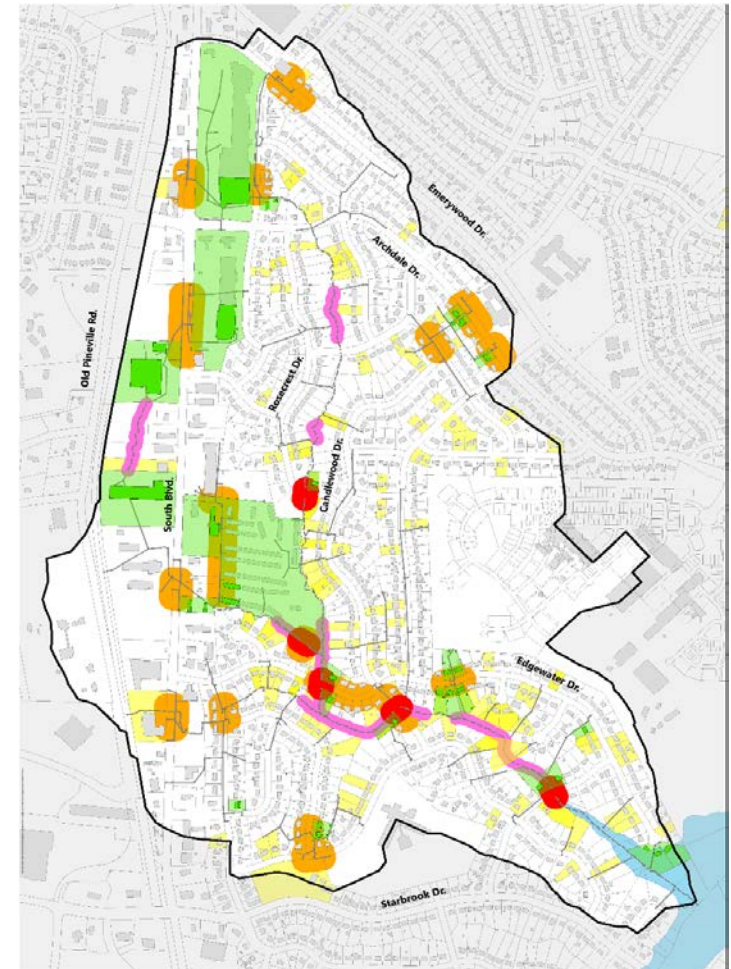
South Boulevard
Residential Roads



**Channel Capacity &
Instability Concerns**

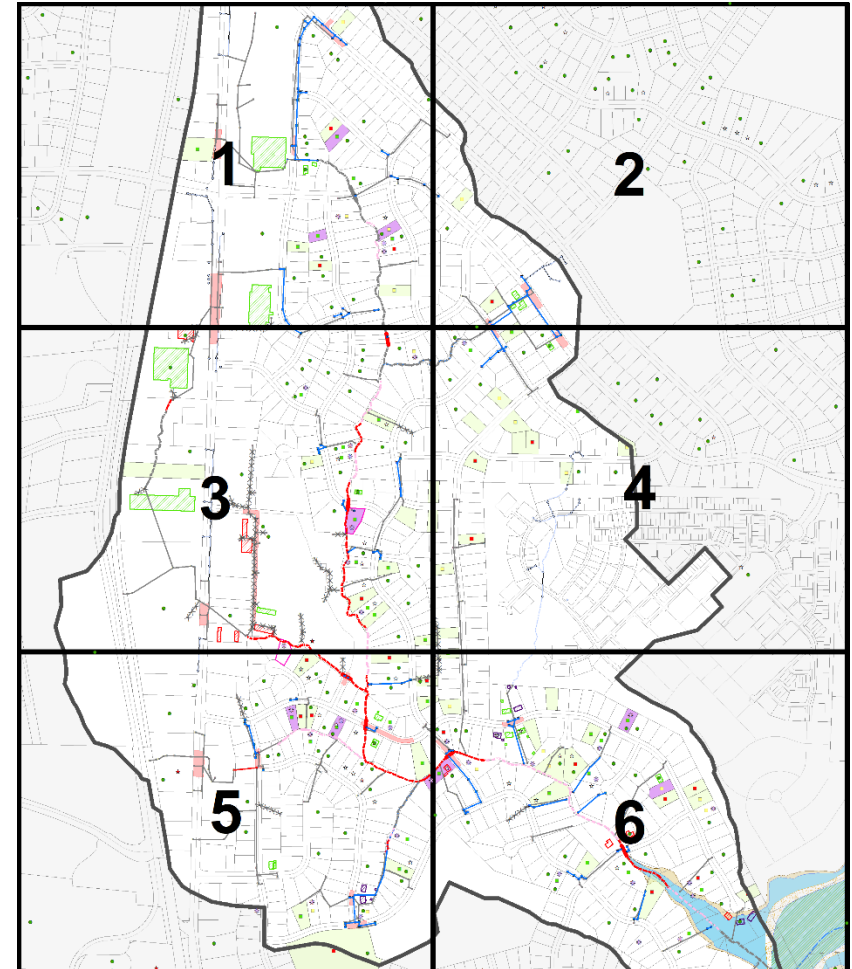
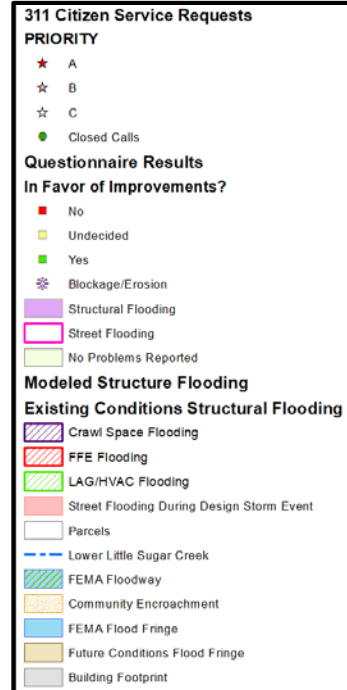
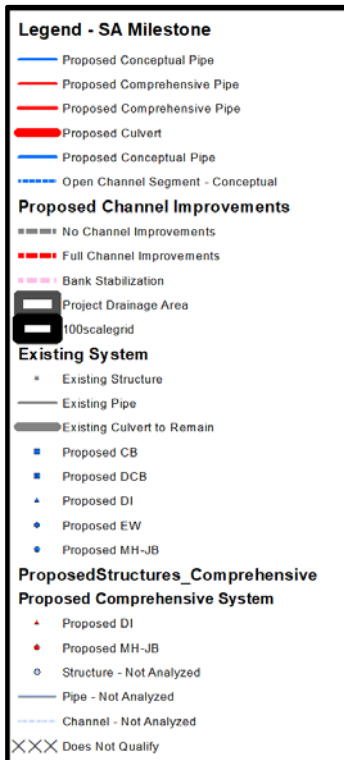


**Potential Structure
Flooding**

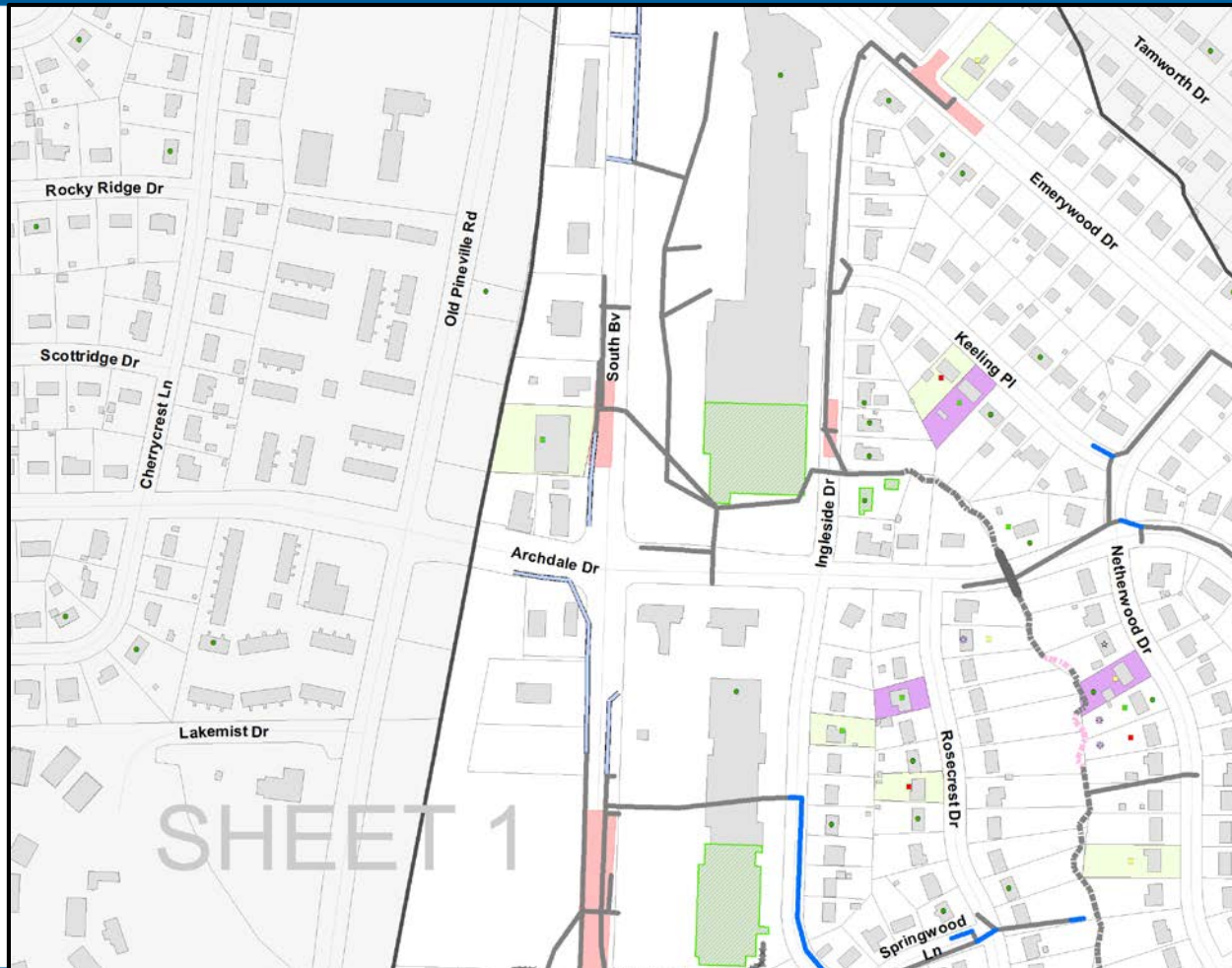


PROPOSED IMPROVEMENTS

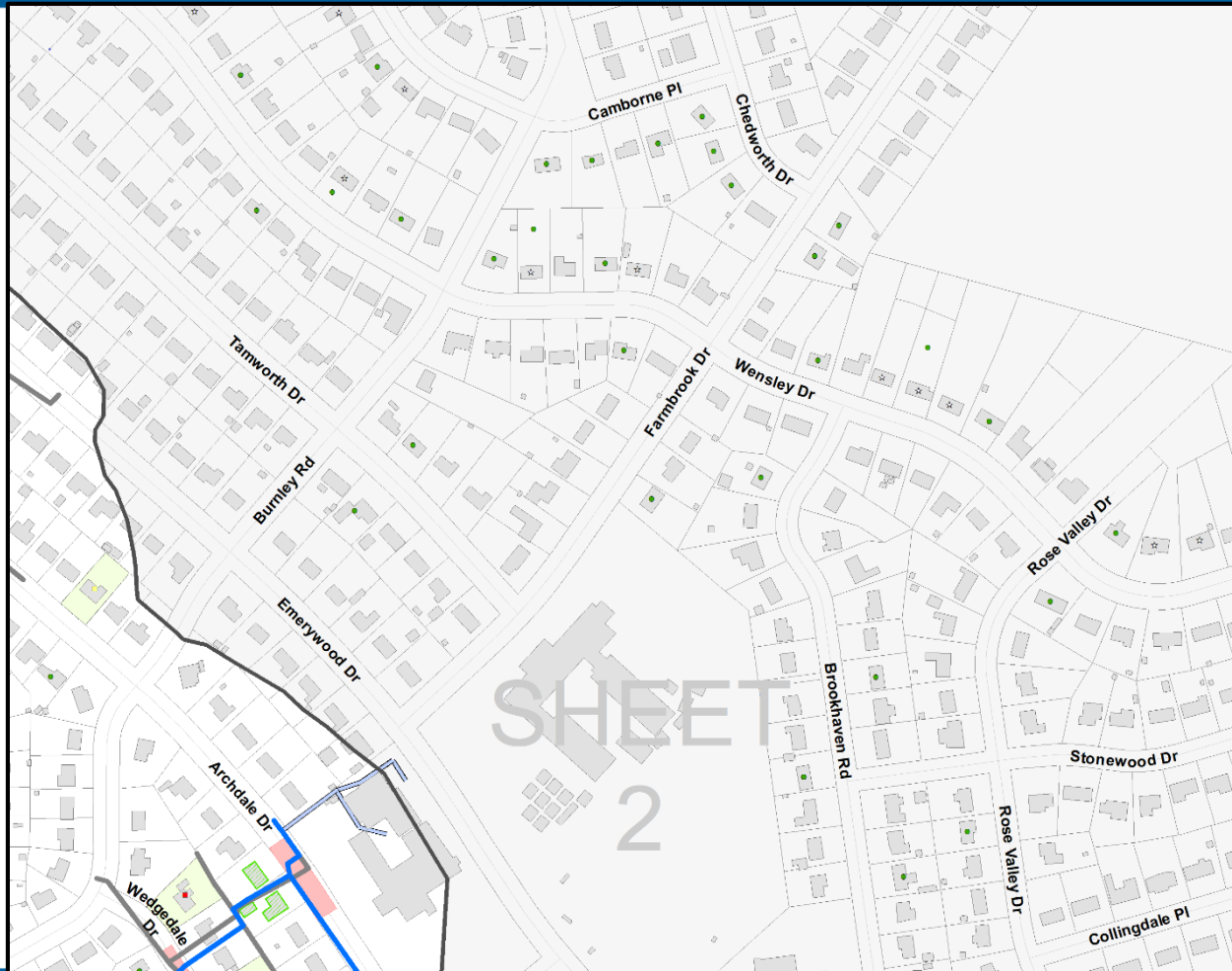
Overall System Map



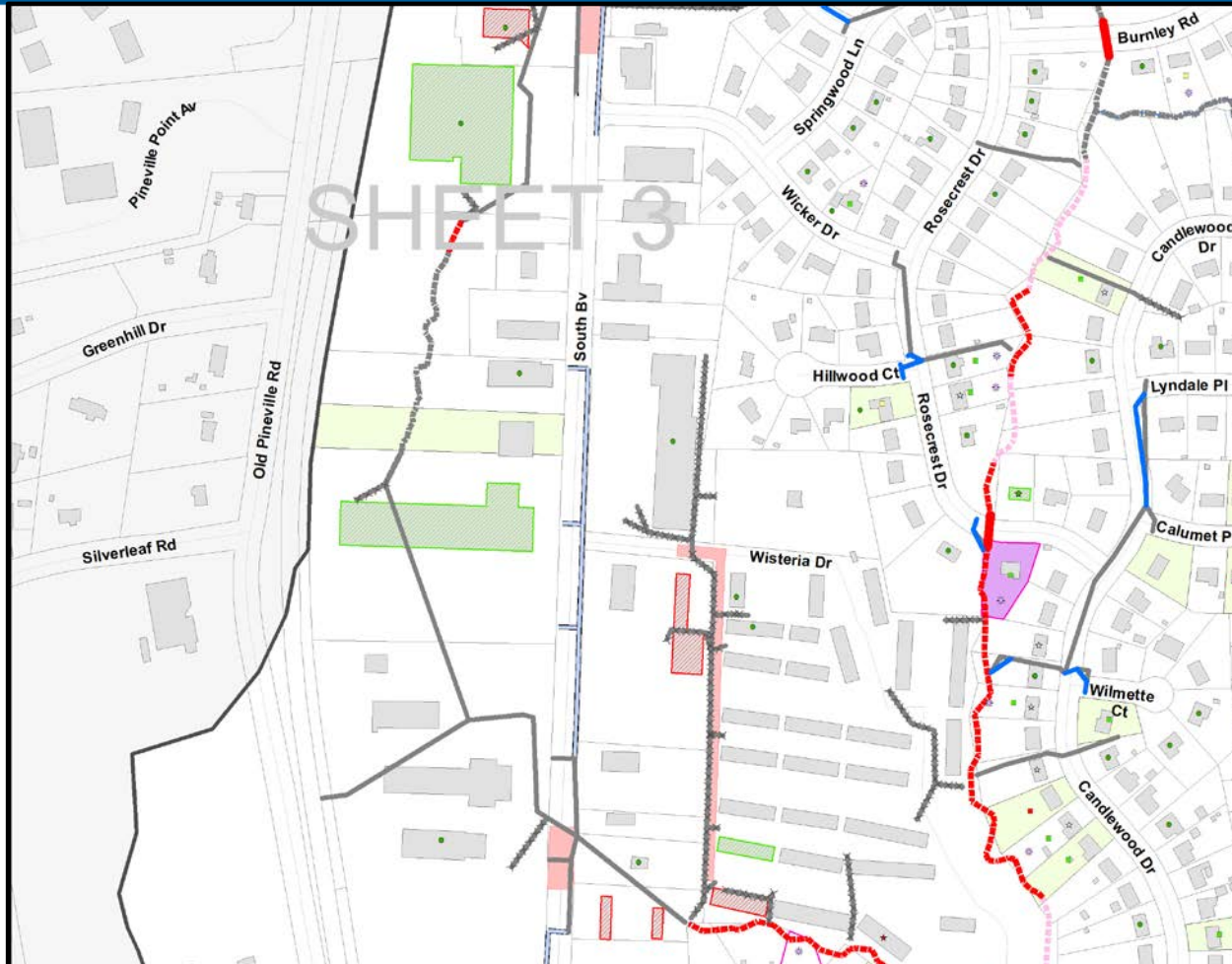
PROPOSED IMPROVEMENTS – SHEET 1



PROPOSED IMPROVEMENTS – SHEET 2



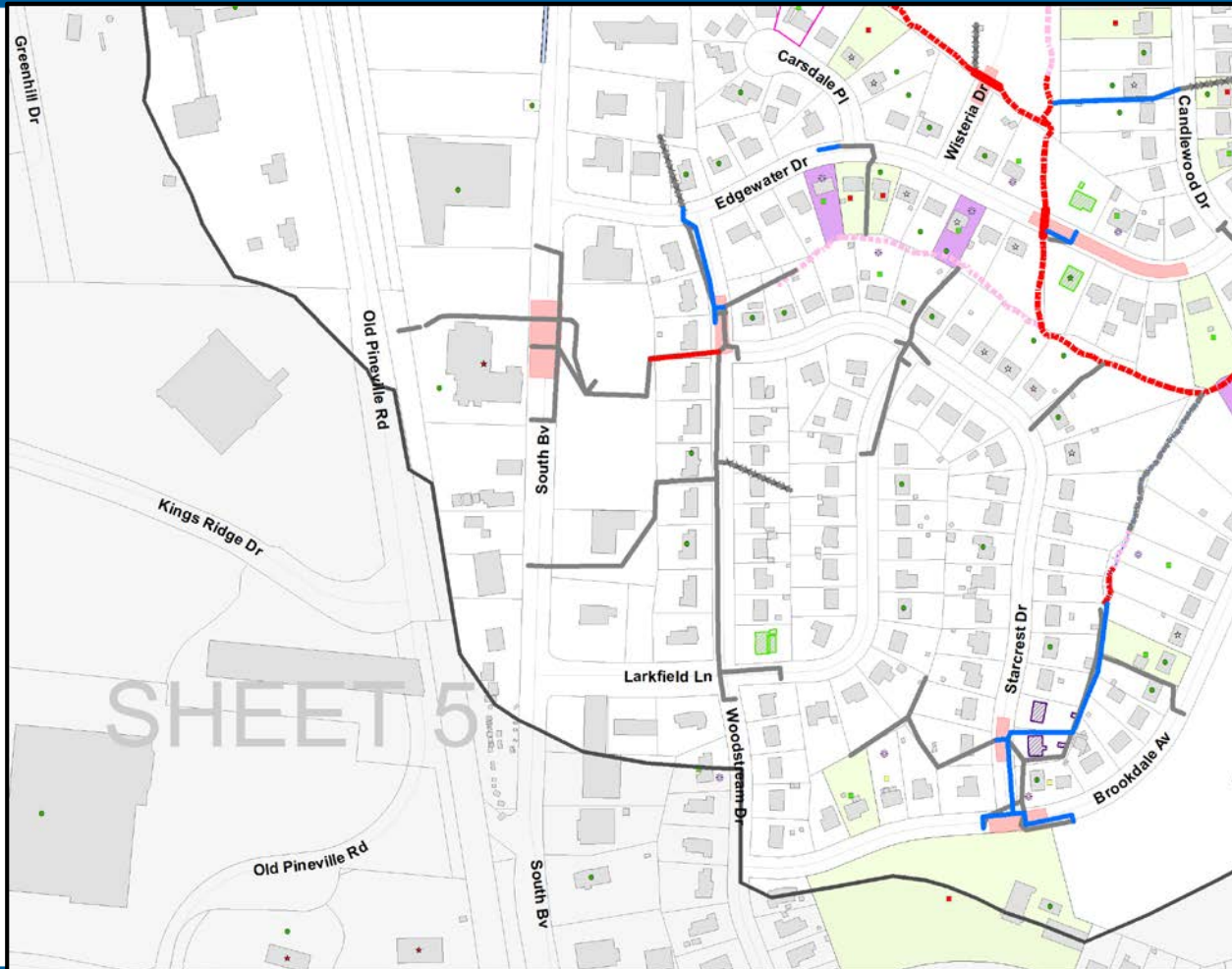
PROPOSED IMPROVEMENTS – SHEET 3



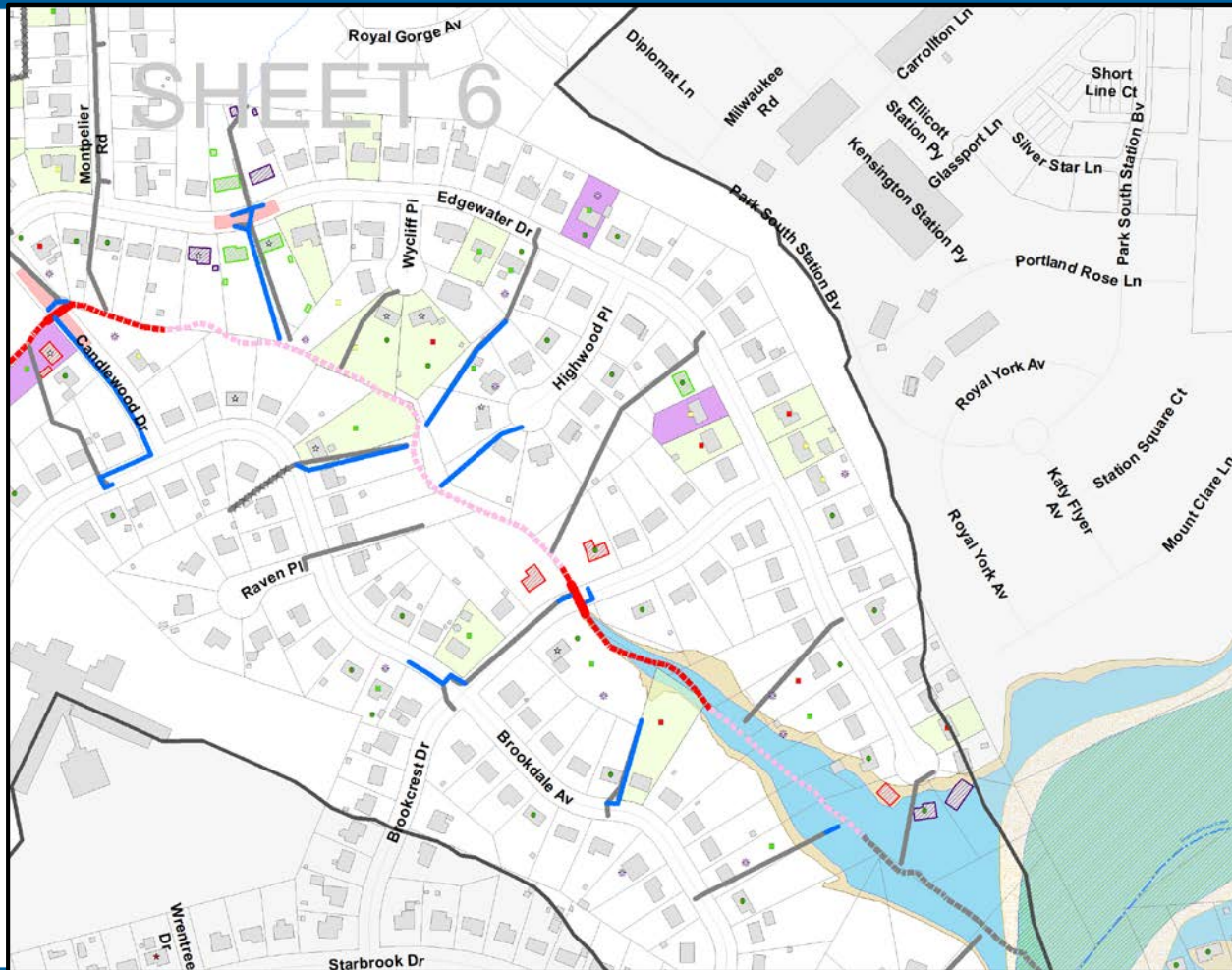
PROPOSED IMPROVEMENTS – SHEET 4



PROPOSED IMPROVEMENTS – SHEET 5



PROPOSED IMPROVEMENTS – SHEET 6



NEXT STEPS

- **Design**
 - Preparation of construction documents (plans, cost estimate, etc.)
 - Additional survey data collection
- **Permitting**
 - 401/404 Permits
 - Erosion Control Permit
 - Floodway Encroachment
 - Stormwater Regional General Permit
- **Easement Acquisition**
 - City will ask property owners for easements to construct and maintain improvements

NEXT STEPS

- **Bid**
 - The City advertises the project for bid and the contract is awarded by City Council
- **Construction**
 - The selected contractor builds the Improvements

WHAT WE NEED FROM YOU

- **Feedback on the proposed improvements**
- **Support for the Project's future phases**
 - **Design**
 - **Easement Acquisition**
 - **Construction**

CONCLUSION

Please Remember:

- **Sign-In Sheet**
- **Customer Service Comment Cards**

The Team will be available after the General Question & Answer period to discuss specific questions and receive input

**Thank You for Coming to the Meeting
Your Input is Appreciated!**

BREAK-OUT GROUPS



Table 1

Table 2