



WT Harris/Plott Road Water Main Project

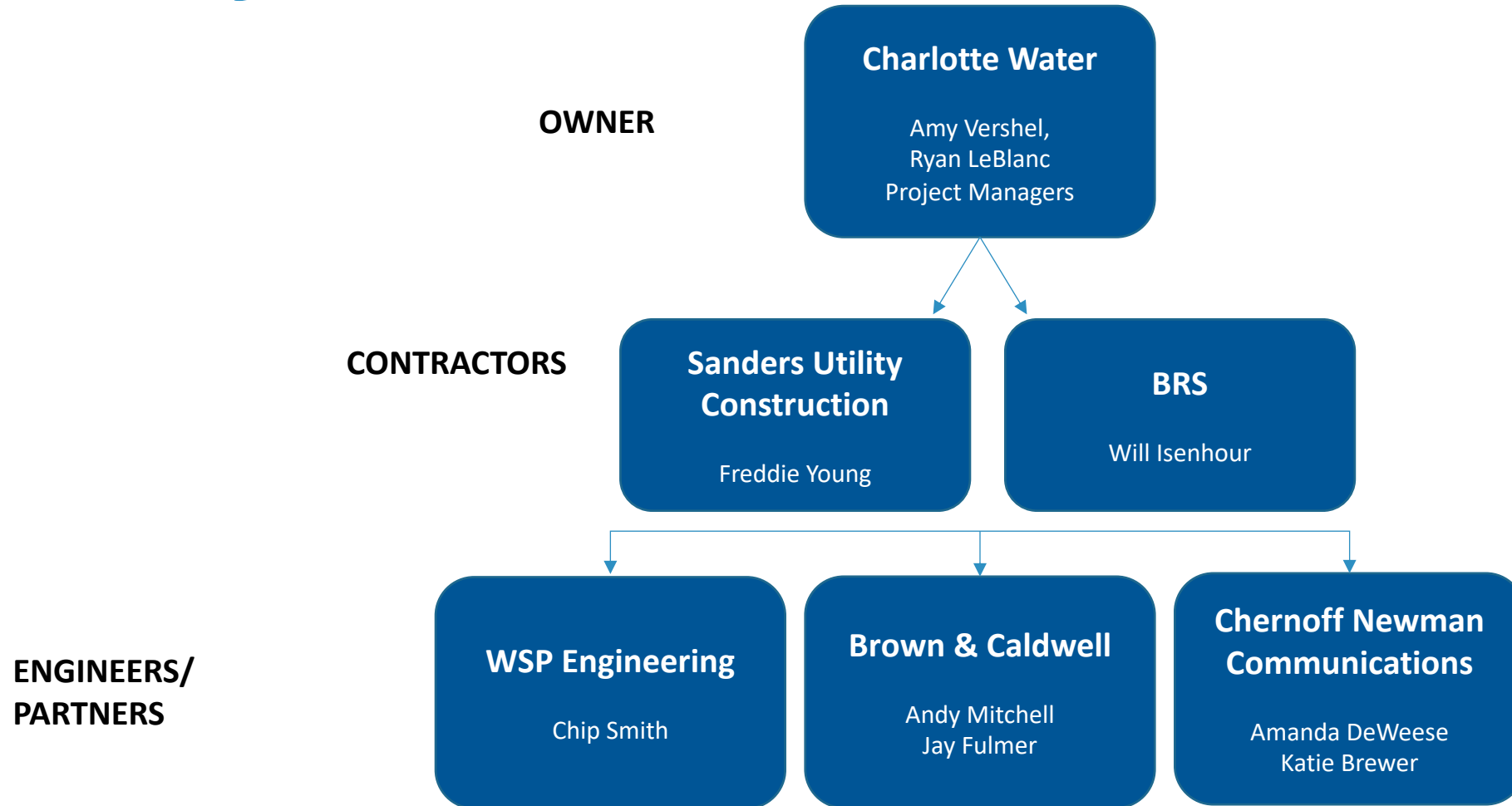
VIRTUAL PUBLIC MEETING: OCTOBER 12, 2021

A solid blue horizontal bar spanning the width of the slide at the bottom.

Agenda

- ▶ **Welcome**
- ▶ **Introduce Project Team**
- ▶ **Project Overview**
- ▶ **Progress**
- ▶ **Construction Details/Timeline**
- ▶ **Activities to Expect**
- ▶ **Stay Connected**
- ▶ **Q&A**

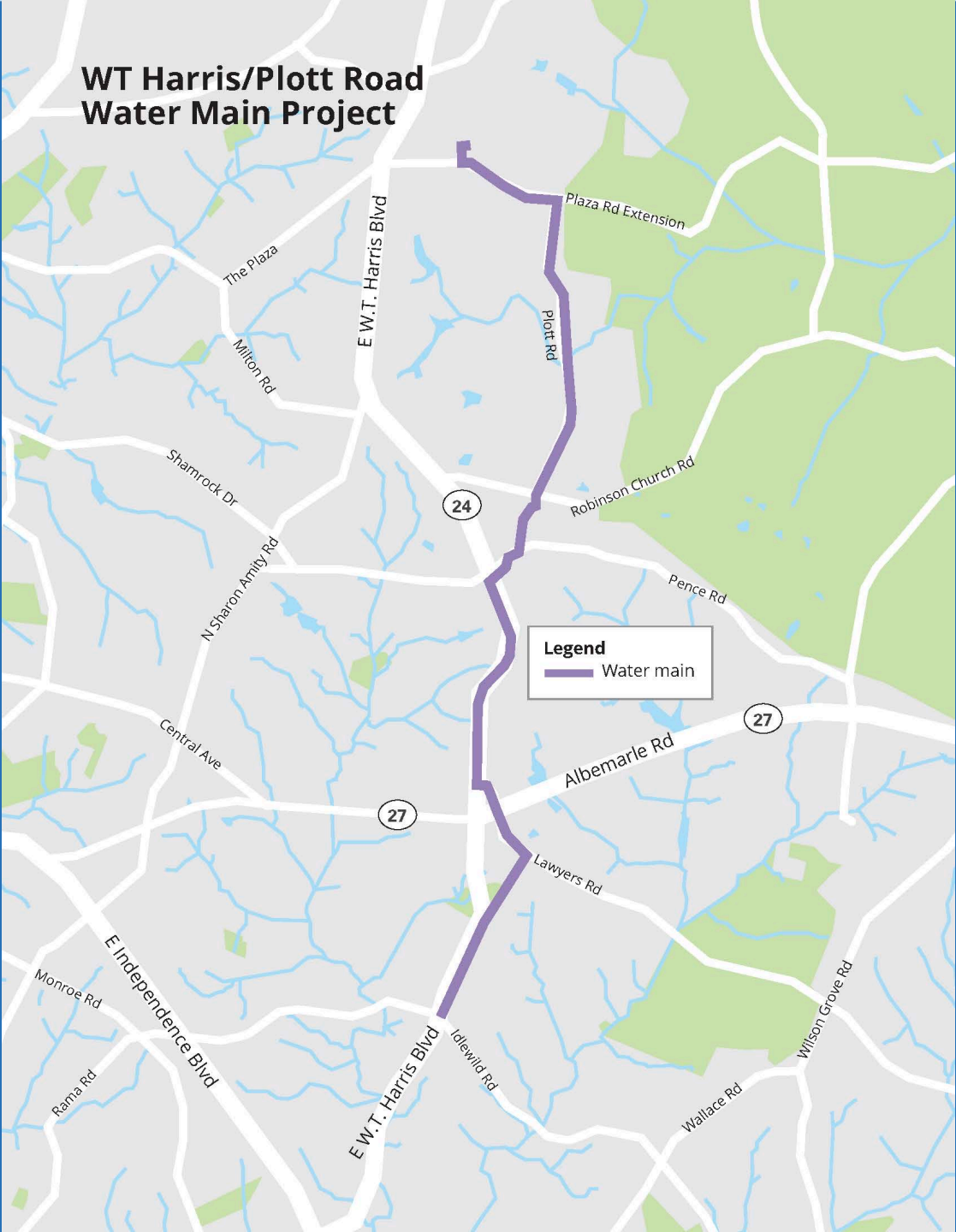
Project Team



Project Overview

- ▶ Water main will serve eastern part of Mecklenburg County
- ▶ Project is needed to:
 - Maintain quality and reliability of service
 - Increase capacity to meet current and future needs
- ▶ Approximately 25,000 linear feet of water main will be installed from W.T. Harris Boulevard and Idlewild Road north to Plott Road and Plaza Road Extension

Project Alignment



Project Progress:

What's been done to date?

- ▶ Land surveying and underground utility markings
- ▶ Geotechnical investigations
- ▶ Design of new water main
- ▶ Erosion control permitting
- ▶ Development of traffic control plans
- ▶ Easement acquisitions are ongoing



Construction

Construction Timeline

- ▶ Preliminary planning and design: started September 2020
- ▶ Construction: estimated to start late 2021/early 2022 and is expected to last 3.5 years

Water Main Construction Activities

- ▶ Clearing and trimming within easements
- ▶ Moving equipment on site
- ▶ Pipe delivery and storage
- ▶ Establishing a safe work zone
- ▶ Traffic control measures including road/lane closures and detours
- ▶ Trench digging, placing pipe and back filling
- ▶ Rock blasting (as needed)
- ▶ Construction vehicle traffic within the easements

Water Service Interruptions

- ▶ Planned water outages will be communicated to affected customers 72 hours in advance
- ▶ Unplanned water outages are considered emergencies and will be repaired as soon as possible
- ▶ If you experience cloudy, discolored water, please run cold water for up to 15 minutes. If it doesn't clear, call 311 and say "water emergency" for assistance

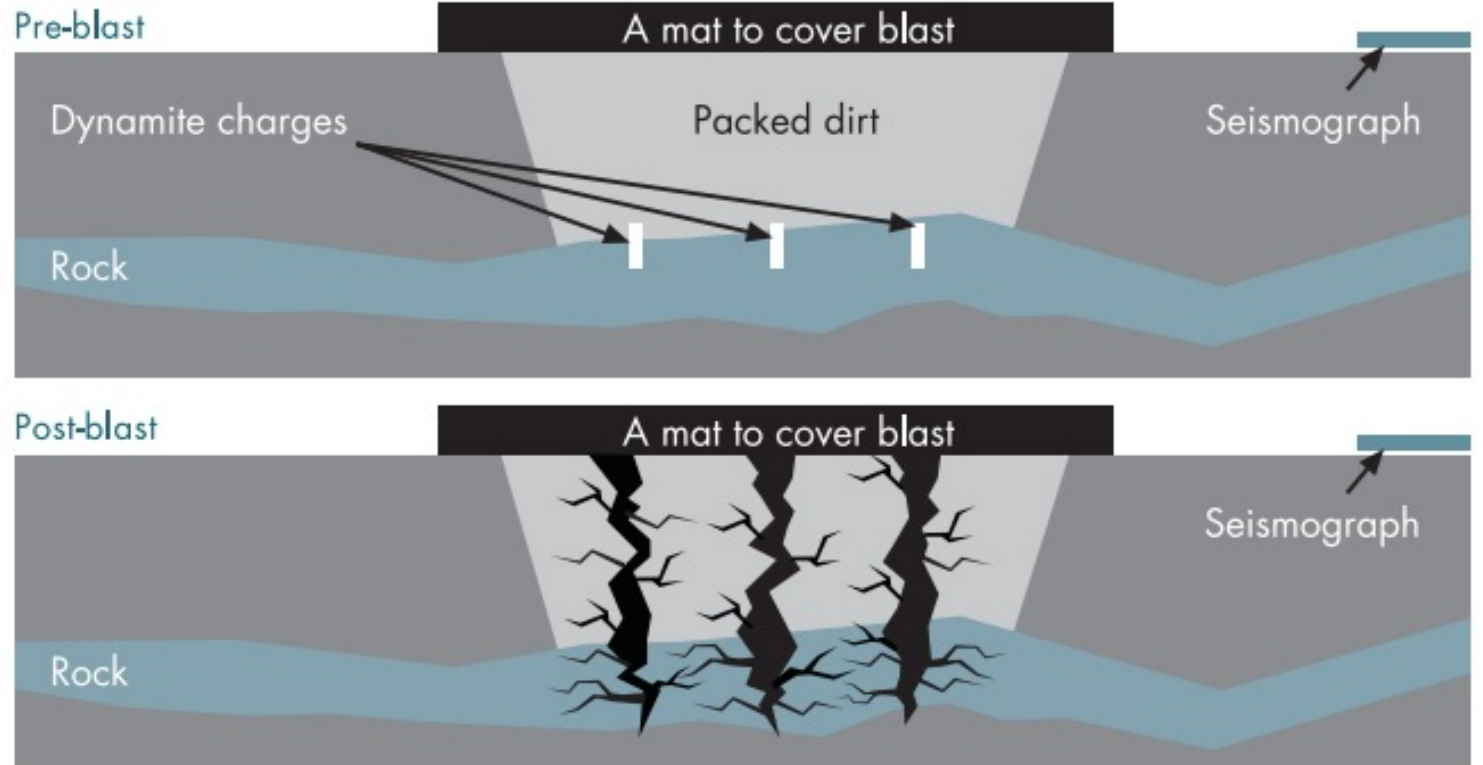
What is Rock Blasting?

- ▶ Removal of underground rock by use of small controlled blasting
- ▶ Blasting is a standard construction procedure
- ▶ Seismograph monitors will record all vibrations to ensure they are within specifications
- ▶ Impacted property owners will have opportunity for pre-blast surveys

What Does Rock Blasting Look Like?



Heavy mats are placed on the blasting area to control impact.



Residents may hear a warning horn, a muffled noise, and slight vibration or rumble, similar to a slammed door or thunder.

Mobilization & Preparation

MOBILIZATION AND SITE PREPARATION



Silt fencing prevents soil /sediment from washing away.

CONSTRUCTION ZONE



Construction zones will be large enough for excavators and dump trucks to move.

Active Construction



24-inch drinking water pipe installation.



Crews dig at strategic locations reducing the amount of lane closures, pavement repair, and inconvenience to customers.

Construction & Restoration



In some cases the whole street may be repaved.



Restoration



CLTWater will restore most areas with grass seed and straw.



Crews may patch the road to reopen and later repave or complete restoration efforts after the pipe installation is complete.

Restoration



Next Steps

- ▶ Finalize easement acquisitions
- ▶ Mobilization of construction equipment
- ▶ Construction expected to start late 2021/early 2022

Stay Connected

- ▶ Visit project webpage: bit.ly/WTHarrisPlottRoad
- ▶ Charlotte Water project contact:
 - Amy Vershel, Amy.Vershel@charlottenc.gov, 704-336-1077
 - Ryan LeBlanc, Ryan.LeBlanc@charlottenc.gov, 704-336-1049
- ▶ Mailers and door hangers
- ▶ Neighborhood/homeowners' associations
- ▶ Nextdoor posts

Q&A Session

