



Little Hope Creek Wastewater Improvement Project

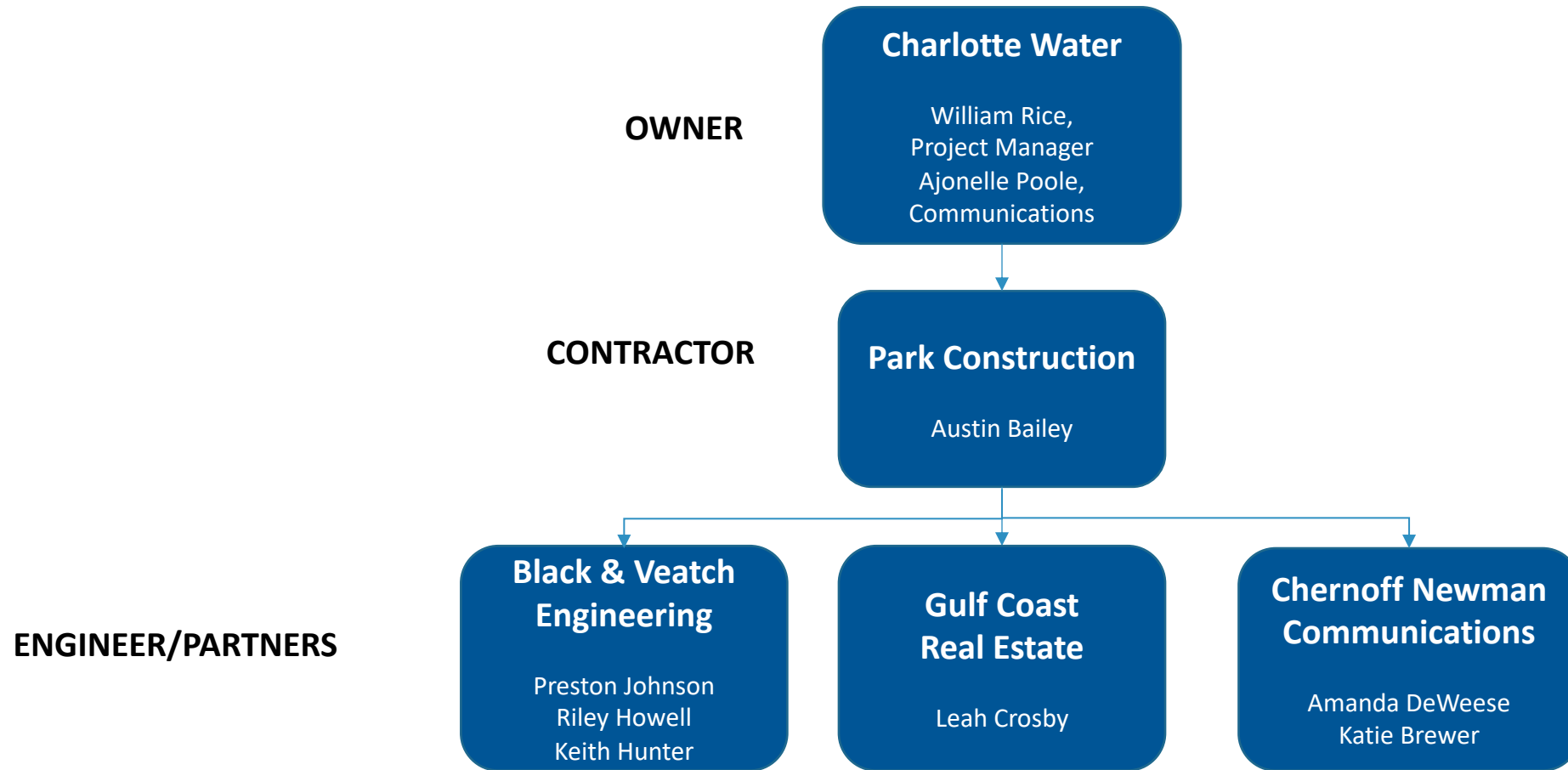
PHASE 3 VIRTUAL PUBLIC MEETING: OCTOBER 25, 2023

A solid blue horizontal bar spanning the entire width of the page at the bottom.

Agenda

- ▶ **Welcome**
- ▶ **Introduce Project Team**
- ▶ **Project Overview**
- ▶ **Progress**
- ▶ **Construction Details/Timeline**
- ▶ **Q&A**

Project Team



Project Overview

- ▶ Current wastewater system in the Little Hope Creek basin was primarily built in the 1950s to 1960s and is in dire need of repair.
- ▶ Unusually high amounts of groundwater and stormwater entering the existing pipeline.
- ▶ History of sanitary system overflows in the area.
- ▶ With development in the area, the capacity of the system must be increased.

Previous Condition



Project Goals

- ▶ Improve the wastewater system worn by age, high use, and natural and man-made obstructions.
- ▶ Increase wastewater capacity to meet current and future needs.
- ▶ Reduce the risk of sewer overflows.
- ▶ Protect the water quality in Little Hope Creek.

Project
Map
Phase 3



Project Overview

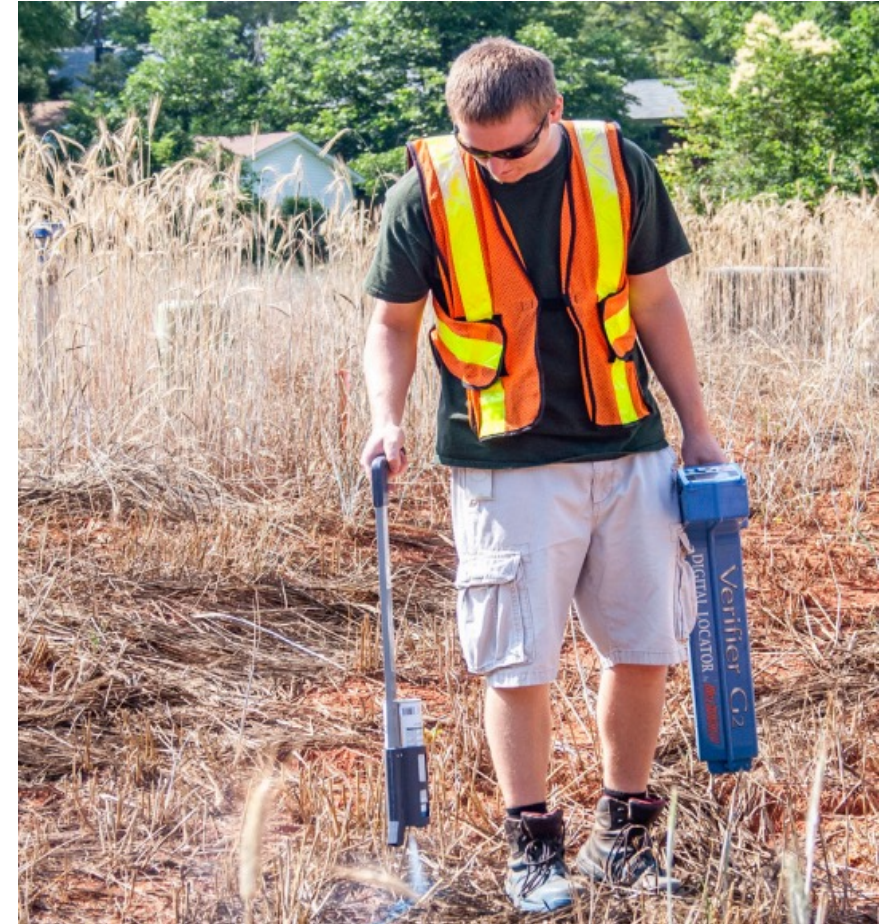
- ▶ Construction started in August 2021
 - 17,000 linear feet has been installed to date.
- ▶ Existing wastewater pipeline ranges from 8-inch to 24-inch diameter; to be replaced with 12-inch to 36-inch pipe
- ▶ Project is being constructed in 3 phases



Project Progress | Phase 3

What's been done to date?

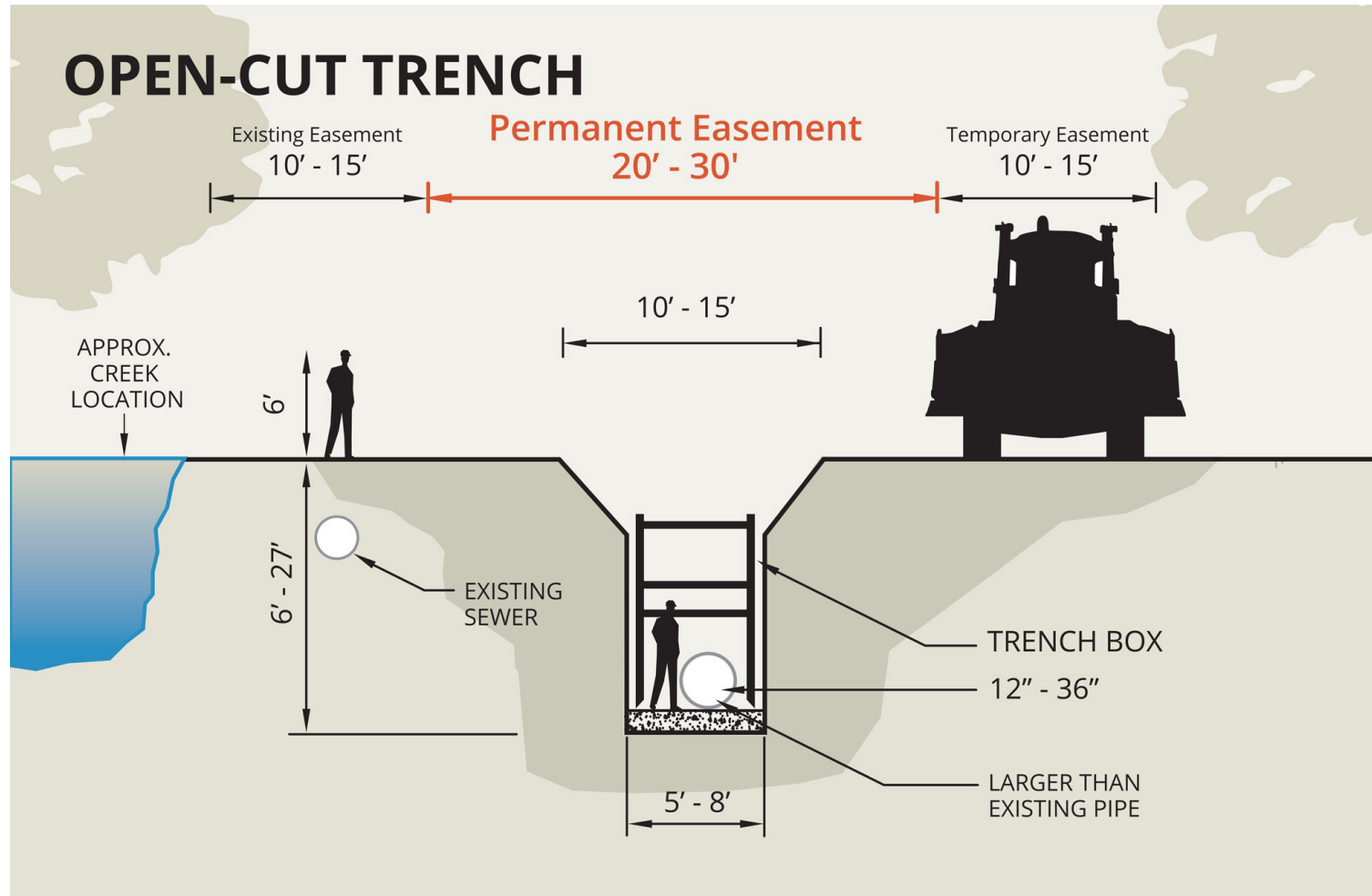
- ▶ Land surveying and underground utility markings
- ▶ Flow metering and soil sampling
- ▶ Geotechnical investigations
- ▶ Video inspections
- ▶ Design of new pipeline
- ▶ Easement acquisitions



Easement Acquisitions

- ▶ Properties along the route that will be impacted have been contacted by real estate representatives with Gulf Coast
- ▶ Phase 3 easement negotiations near completion and expected to be completed by end of 2023

Typical Easement





Construction

Construction Timeline

- Phase 3 construction: clearing activities to start November 6.



Schedules are subject to change, due to weather and other conditions

Main Project Construction Activities

- ▶ Clearing and trimming within easements
- ▶ Moving equipment on site
- ▶ Pipe delivery and storage
- ▶ Establishing a safe work zone
- ▶ Traffic control measures (as needed)
- ▶ Trench digging, placing pipe and back filling
- ▶ Blasting (as needed)
- ▶ Construction traffic within the easements



Clearing Activities

- ▶ Prior to construction, crews will start clearing within easements
- ▶ Includes:
 - Marking property lines using survey stakes, markers and ribbons
 - Removing trees, bushes and shrubs
 - Removing fences and other structures in easements

What is Blasting?

- ▶ Removal of underground rock by use of small controlled blasting
- ▶ Blasting is a standard construction procedure
- ▶ Seismograph monitors will record all vibrations to ensure they are within specifications
- ▶ Nearby property owners will have opportunity for pre- and post-blast surveys

Mobilization & Preparation

MOBILIZATION AND SITE PREPARATION



Silt fencing prevents soil /sediment from washing away.

CONSTRUCTION ZONE



Construction zones will be large enough for excavators and dump trucks to move.

Active Construction

PIPE CONSTRUCTION



24-inch wastewater pipe project under a street.



Manholes vary in size depending on the amount of wastewater a community creates.

Construction & Restoration

DURING CONSTRUCTION/AFTER RESTORATION



Stay Connected

- ▶ Visit project webpage: bit.ly/littlehopecreek
- ▶ Project contact: William Rice
 - William Rice, Charlotte Water
wrice@charlottenc.gov
- ▶ Mailers and door hangers
- ▶ Text alert notifications
 - Text littlehopecreek to 844-753-0614
- ▶ Neighborhood/homeowners' associations
- ▶ Nextdoor

Q&A

