



Irwin Creek Tributary to Remount Road Wastewater Improvement Project

VIRTUAL PUBLIC MEETING: AUGUST 10, 2021

A solid blue horizontal bar spanning the width of the slide at the bottom.

Agenda

- ▶ **Welcome**
- ▶ **Introduce Project Team**
- ▶ **Project Overview**
- ▶ **Progress**
- ▶ **Construction Details/Timeline**
- ▶ **Activities to Expect**
- ▶ **Q&A**

Project Team

OWNER

Charlotte Water

Mac McClanahan,
Project Manager
Katie Liebman,
Communications

CONTRACTOR/ ENGINEER

BRS/STV

Will Isenhour
Martin Deng

SUBCONSULTANTS/ PARTNERS

Stewart Engineering Surveying

Tim Thomas

Gulf Coast Real Estate

Paul McMahan

Chernoff Newman Communications

Amanda DeWeese
Katie Brewer

Project Goals

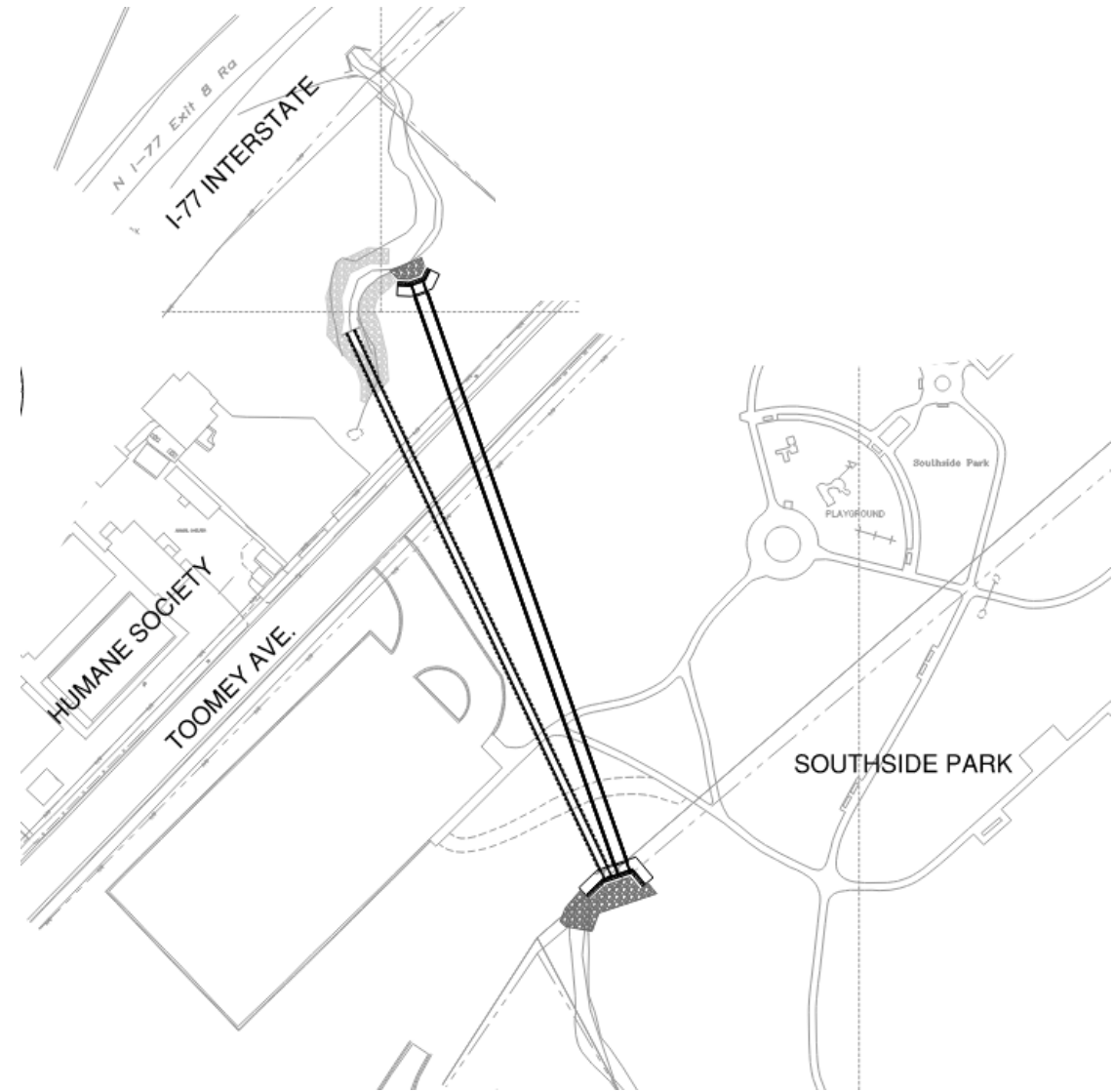
- ▶ Enhance pipe performance
- ▶ Improve the wastewater system worn by age, high use, and natural and man-made obstructions
- ▶ Increase wastewater capacity to meet current and future needs
- ▶ Reduce the risk of sewer overflows
- ▶ Protect the water quality in Irwin Creek

Wastewater Project Overview

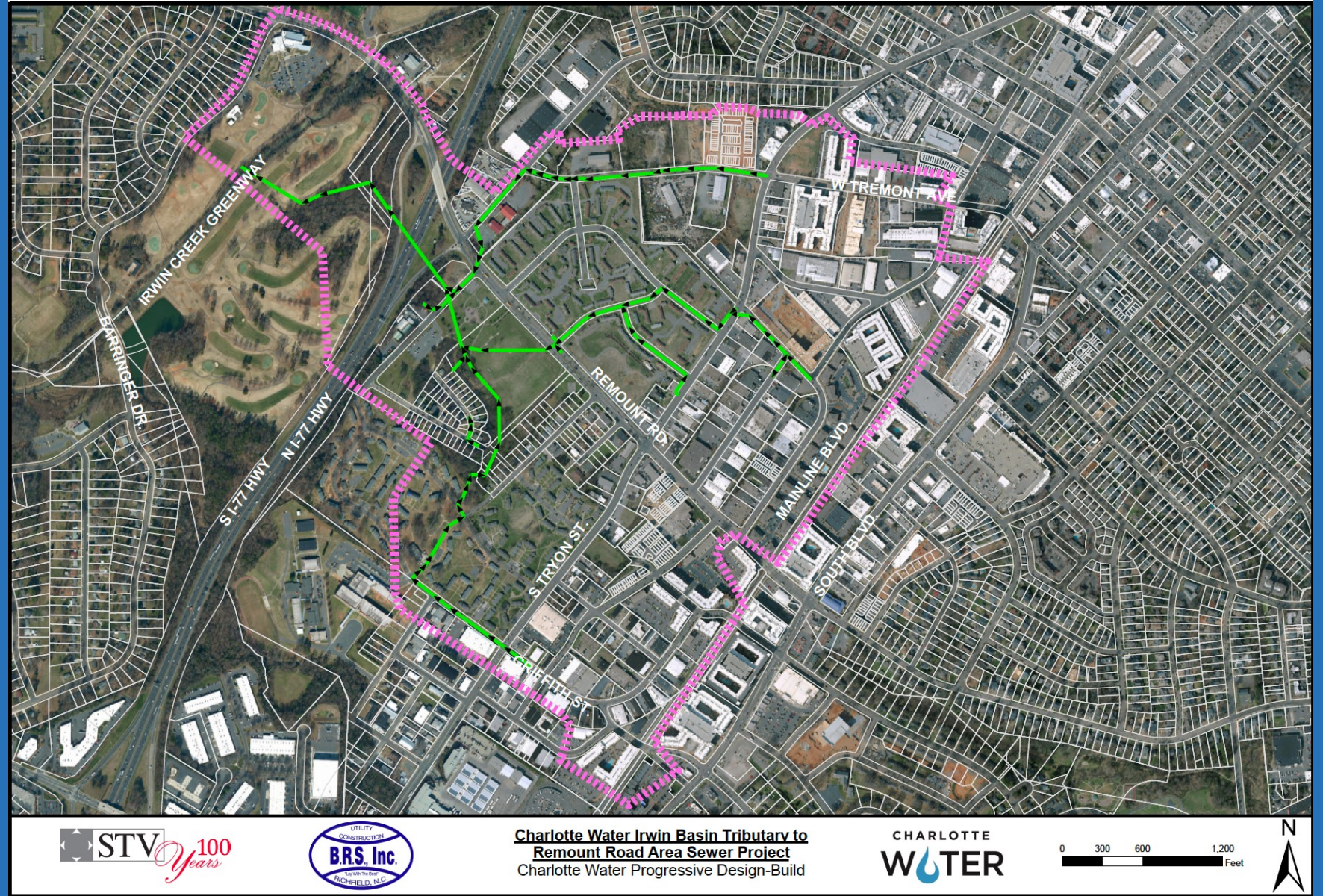
- ▶ Approximately 14,500 linear feet of wastewater pipe
- ▶ This includes 700 linear feet of pipe installed under I-77
- ▶ Existing wastewater pipeline ranges from 8-inch to 12-inch diameter; to be replaced with 8-inch to 30-inch pipe

Stormwater Project

- ▶ As part of this project, approximately 430 linear feet of 90" stormwater culvert will be installed from Southside Park, under Toomey Ave., near the Humane Society



Project Alignment



Project Area



Project Progress:

What's been done to date?

- ▶ Land surveying and underground utility markings
- ▶ Flow metering and soil sampling
- ▶ Geotechnical investigations
- ▶ Video inspections
- ▶ Smoke testing to locate potential leaks
- ▶ Preliminary planning and design



Construction

Construction Timeline

- ▶ Preliminary planning and design: started November 2020
- ▶ Construction: estimated to start in the first quarter of 2022 and take 18 months to complete

Construction Activities

- ▶ Clearing and trimming within easements
- ▶ Moving equipment on site
- ▶ Pipe delivery and storage
- ▶ Establishing a safe work zone
- ▶ Traffic control measures including road closures and detours (as needed)
- ▶ Trench digging, placing pipe and back filling
- ▶ Blasting (as needed)
- ▶ Construction traffic within the easements

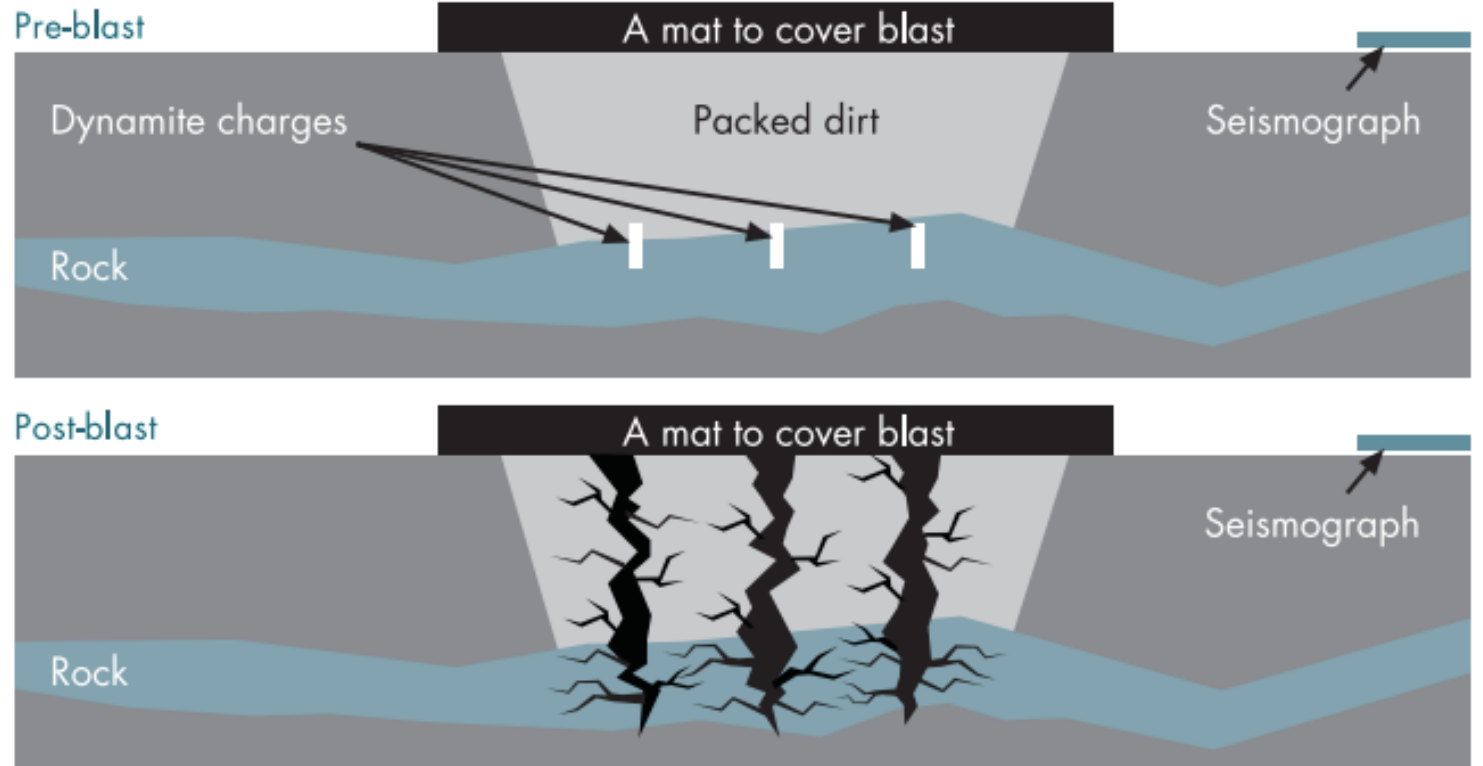
What is Blasting?

- ▶ Removal of underground rock by use of small controlled blasting
- ▶ Blasting is a standard construction procedure
- ▶ Seismograph monitors will record all vibrations to ensure they are within specifications
- ▶ Impacted property owners will have opportunity for pre-blast surveys

What does blasting look like?



Heavy mats are placed on the blasting area to control impact.



Residents may hear a warning horn, a muffled noise, and slight vibration or rumble similar to a slammed door or thunder.

Mobilization & Preparation

MOBILIZATION AND SITE PREPARATION



Silt fencing prevents soil /sediment from washing away.

CONSTRUCTION ZONE



Construction zones will be large enough for excavators and dump trucks to move.

Active Construction

PIPE CONSTRUCTION



24-inch wastewater pipe project under a street.



Manholes vary in size depending on the amount of wastewater a community creates.

Construction & Restoration

DURING CONSTRUCTION/AFTER RESTORATION



Charlotte Country Club Golf Course during construction and immediately following restoration.

Construction & Restoration



In some cases the whole street may be repaved.

Restoration



Next Steps

- ▶ Utility location soft digs: ongoing through the next month
- ▶ Easement acquisition: begins next month
- ▶ Construction starts in the first quarter of 2022

Stay Connected

- ▶ Visit project webpage: bit.ly/IrwintoRemount
- ▶ Charlotte Water project contact:
 - Mac McClanahan, Mac.McClanahan@charlottenc.gov, 704-995-7489
- ▶ Mailers and door hangers
- ▶ Neighborhood/homeowners' associations
- ▶ Nextdoor

Q&A Session

