

2025-040: The Drakeford Company

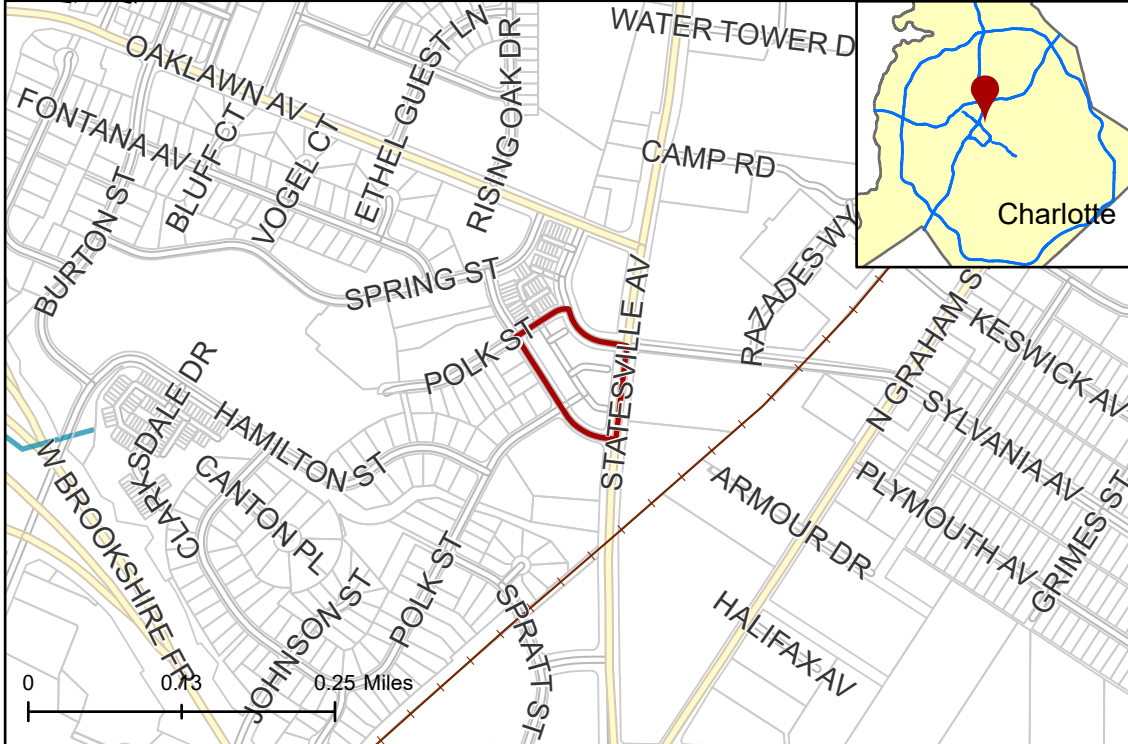
Parcel(s) 07844102

Current Zoning MUDD(CD) (Mixed Use Development, Conditional)

Requested Zoning MUDD(CD)SPA (Mixed Use Development, Conditional, Site Plan Amendment)

Approximately 2.21 acres

Location of Requested Rezoning



Rezoning Map



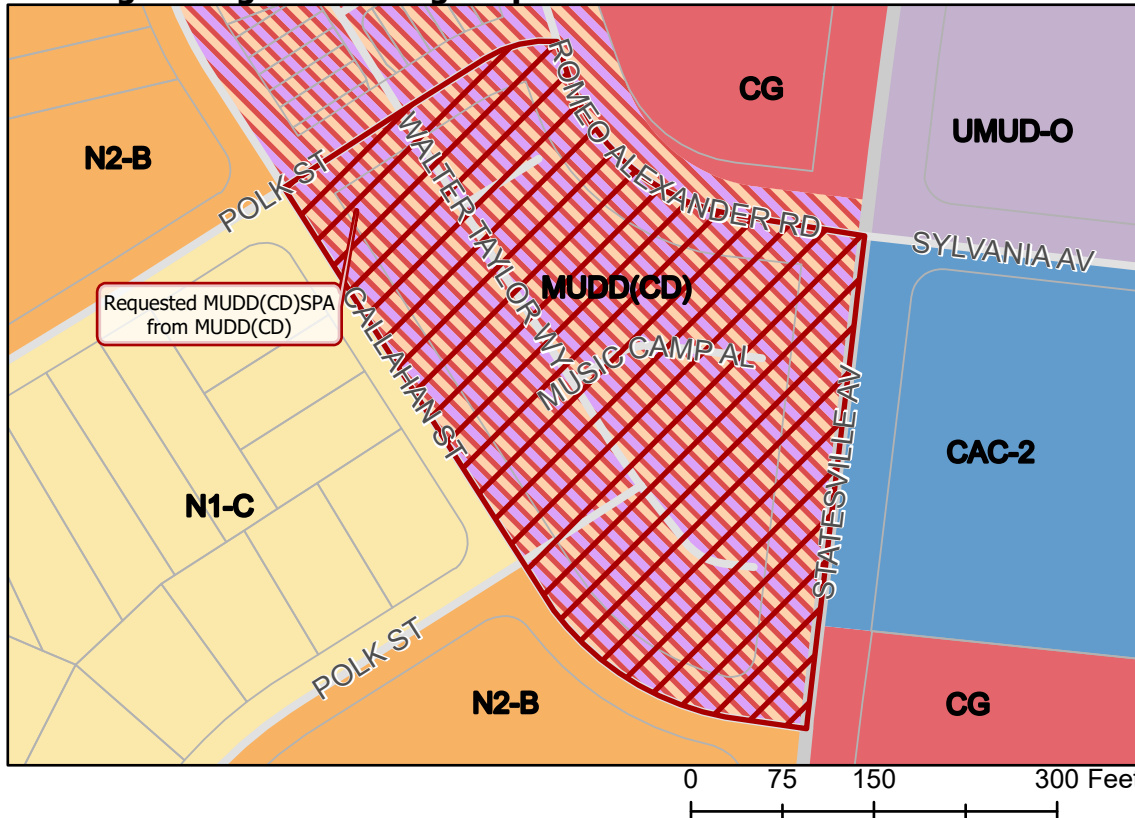
- 2025-040
- Inside City Limits
- Parcel
- Railway
- Streams

City Council District

- 1-Danté Anderson



Existing Zoning & Rezoning Request



- Requested MUDD(CD)SPA from MUDD(CD)

Zoning Classification

- Neighborhood 1
- Neighborhood 2
- Commercial
- Uptown Mixed Use
- Community Activity Center
- Mixed Use



Map Created 7/25/2025