

2025-012: Northpointe LLC

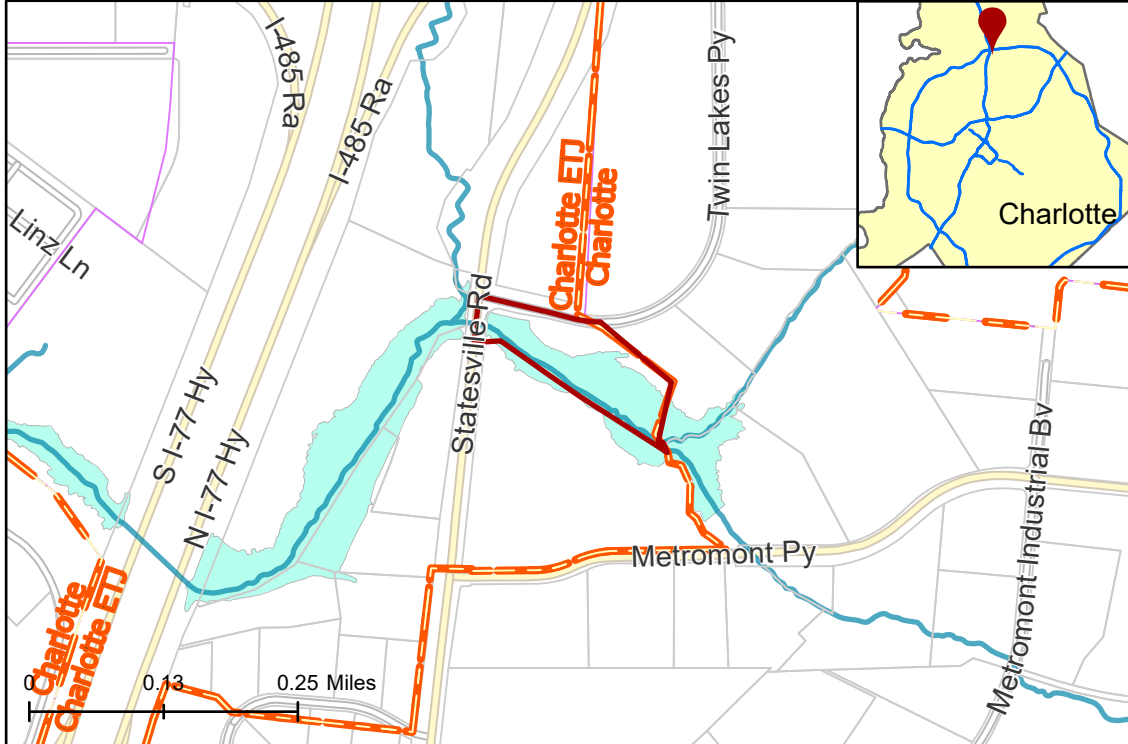
Parcel(s) 02503135

Current Zoning OFC (Office Flex Campus), ML-1 (Manufacturing and Logistics 1)

Requested Zoning ML-2 (Manufacturing and Logistics 2)

Approximately 6.11 acres

Location of Requested Rezoning



Rezoning Map



- 2025-012
- Outside City Limits
- Parcel
- Streams
- FEMA Flood Plain

County Commissioner

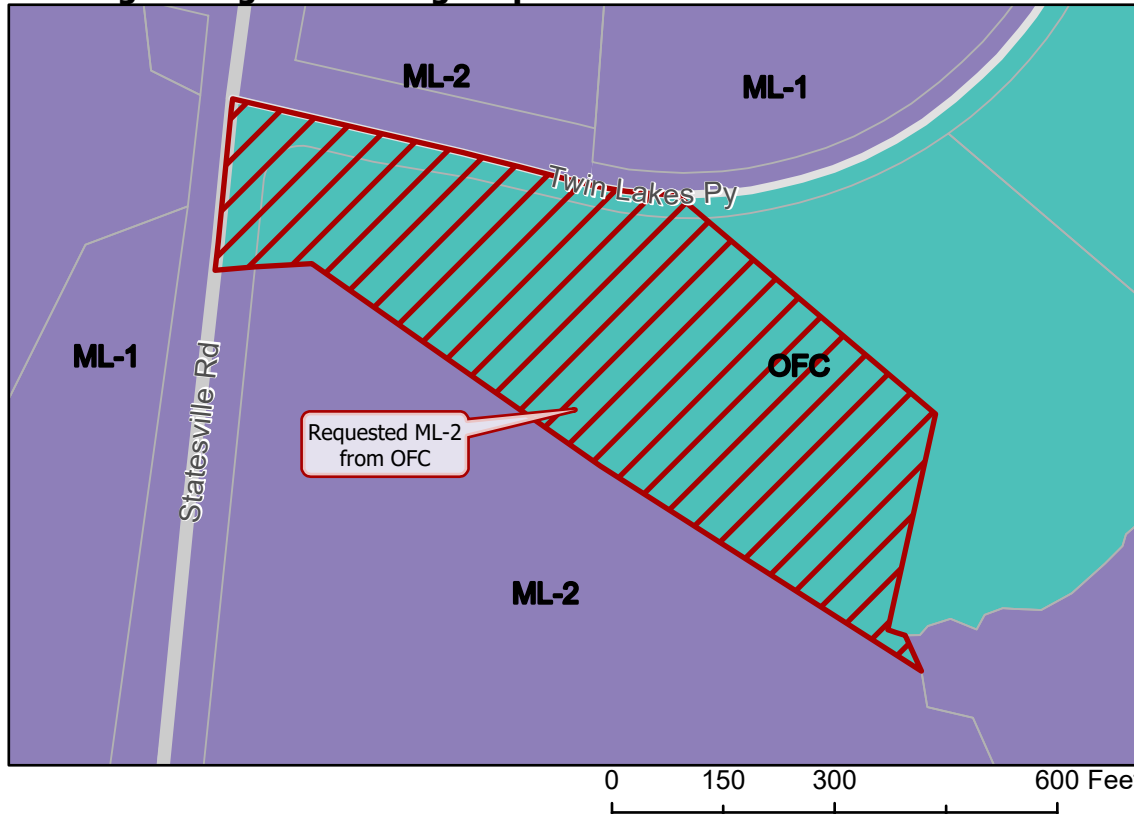
1-Elaine Powell

Adjacent to City Council District

4-Renee Johnson



Existing Zoning & Rezoning Request



Requested ML-2 from OFC

Zoning Classification

- Campus
- Manufacturing & Logistics



Map Created 3/26/2025