



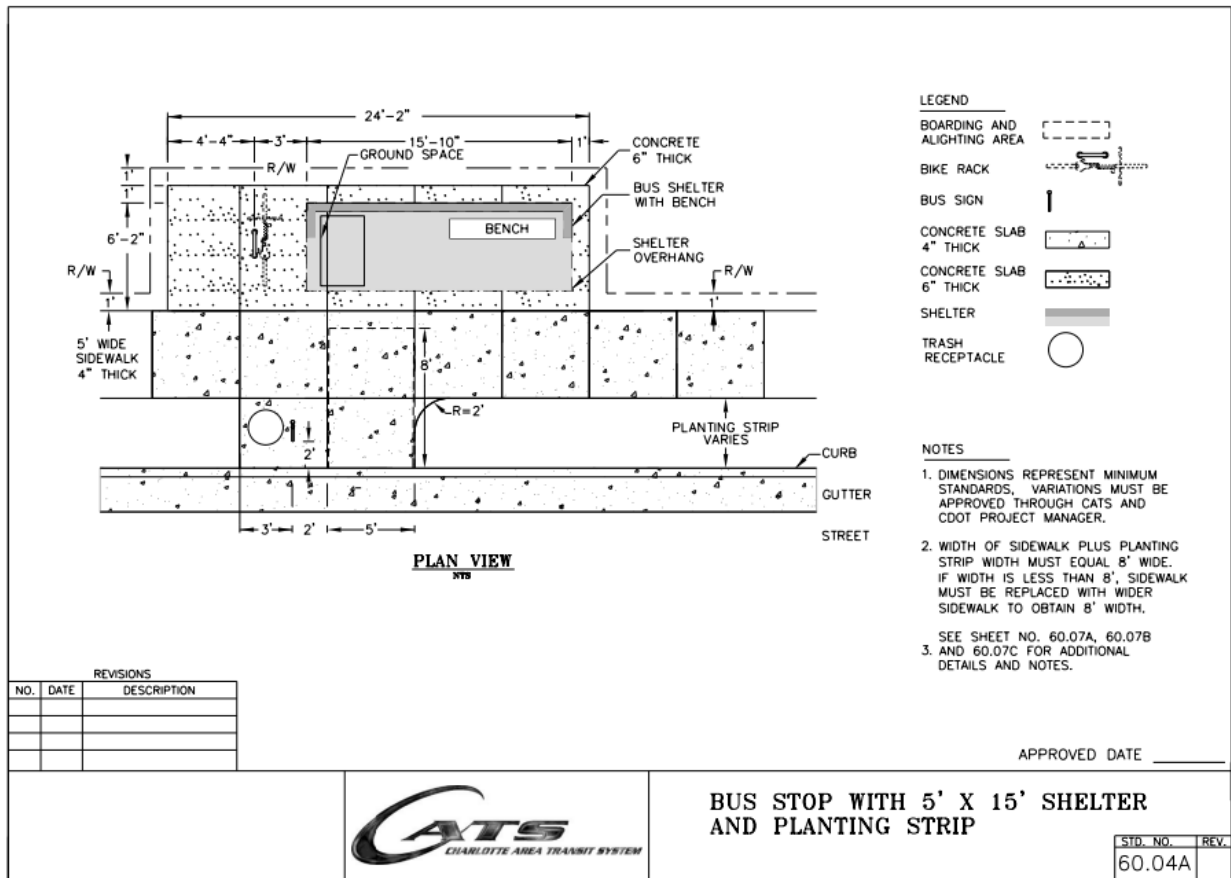
PLAN REVIEW SHEET

Date: 2/22/2024

Petition #: 2024-007

Staff Contact: Evan Punch

The site is located at 5501 Executive Center Dr. It is served by CATS routes #221, #40x, #46x, #9, stop #00180. CATS requests the replacement of the existing shelter with ADA-compliant shelter pad 60.04A. The final location will be coordinated with the developer during the Land Development Plan review process.



Link to details (<https://www.charlottenc.gov/files/sharedassets/city/v/1/growth-and-development/documents/cldsm/revise-cats-details.pdf>)