

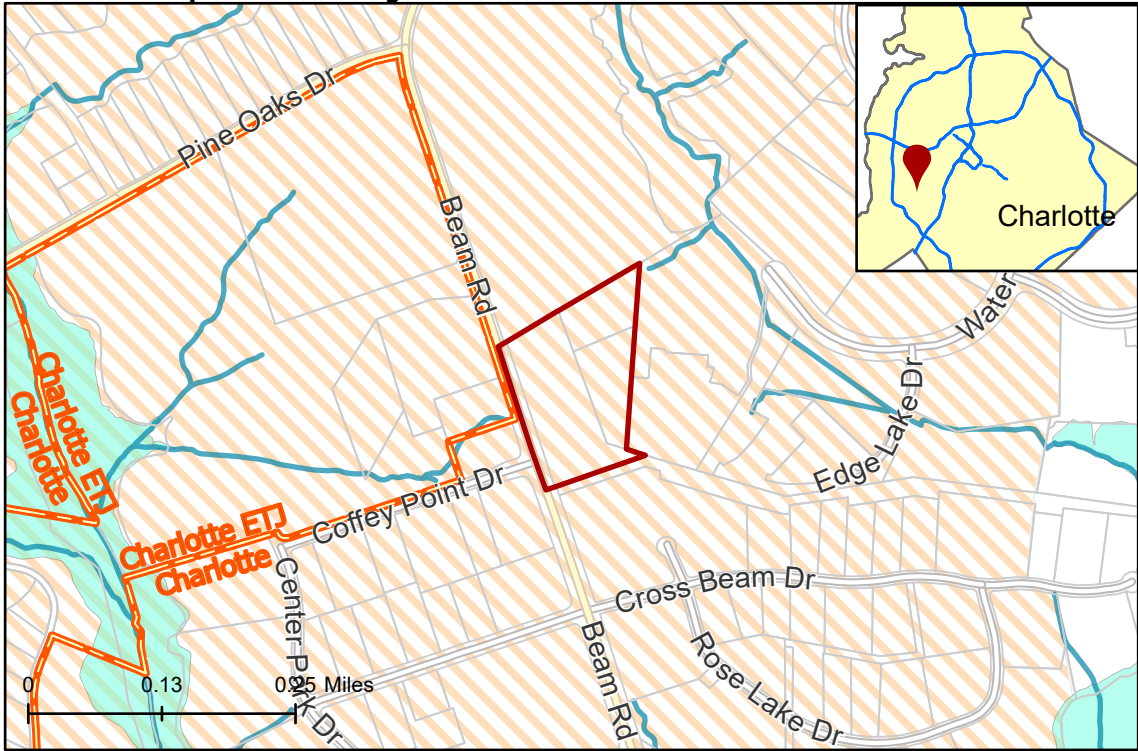
2023-161: Childress Klein Properties

Rezoning Map

Current Zoning I-1(CD)(ANDO) (Light Industrial, Conditional, Airport Noise District Overlay)
 N1-A(ANDO) (Neighborhood 1-A, Airport Noise District Overlay)
Requested Zoning ML-1(ANDO) (Manufacturing and Logistics 1, Airport Noise District Overlay)



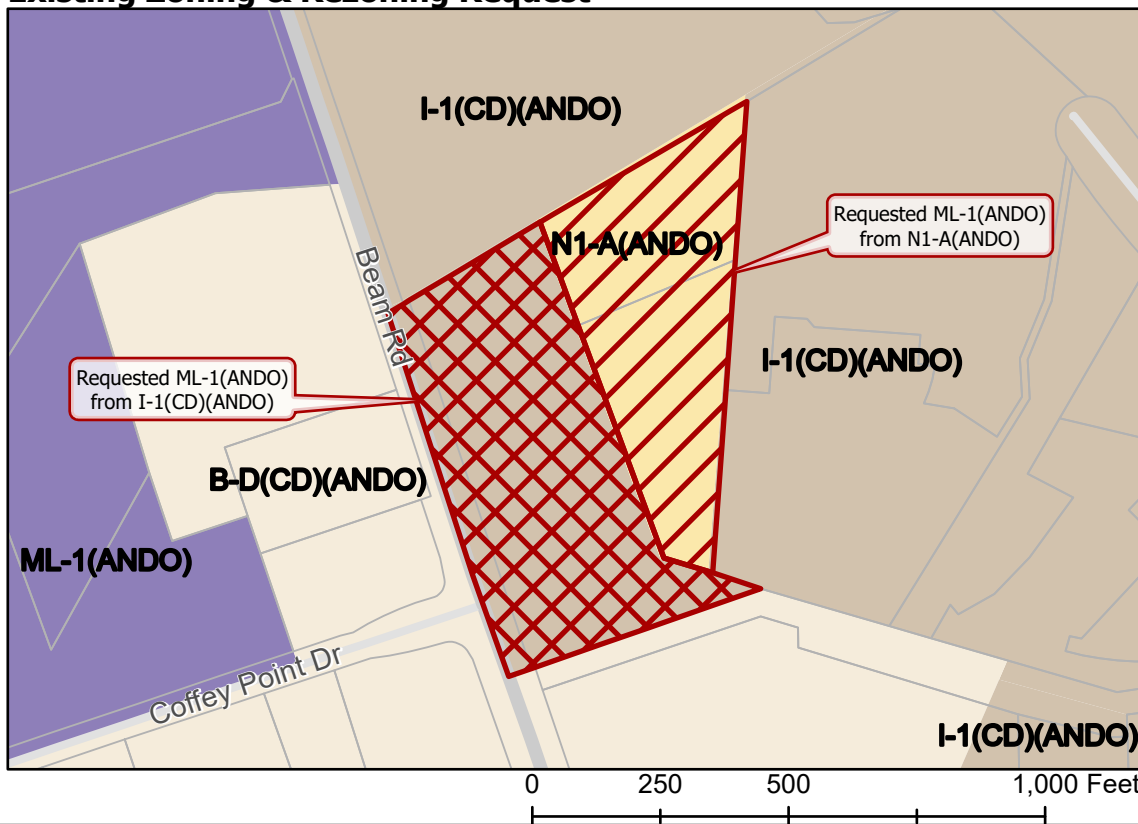
Approximately 9.82 acres
Location of Requested Rezoning



- 2023-161
 - Inside City Limits
 - Parcel
 - Streams
 - FEMA Flood Plain
 - Airport Noise Overlay
- City Council District**
- 3-Victoria Watlington



Existing Zoning & Rezoning Request



- Requested ML-1(ANDO) from N1-A(ANDO)
 - Requested ML-1(ANDO) from I-1(CD)(ANDO)
- Zoning Classification**
- Neighborhood 1
 - Manufacturing & Logistics
 - Business-Distribution
 - Light Industrial



Map Created 12/6/2023