

# 2023-155: CH Land Company, LLC

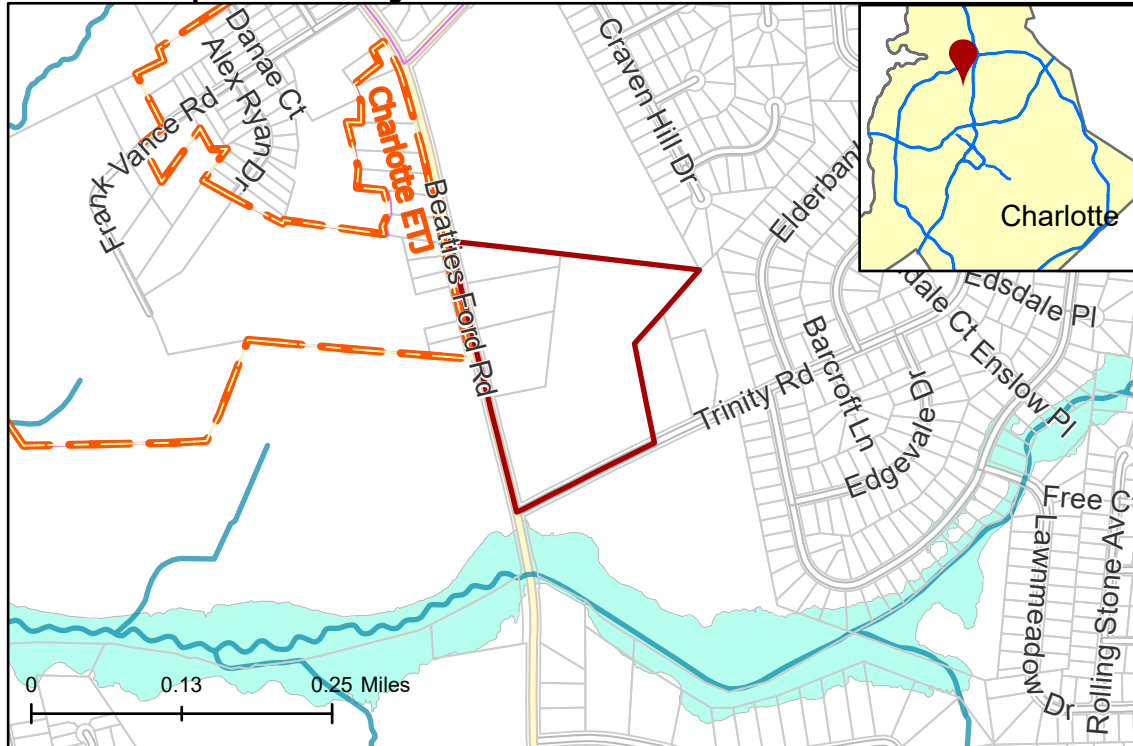
# Rezoning Map

**Current Zoning** CG (General Commercial), N1-A (Neighborhood 1-A)  
**Requested Zoning** N2-B(CD) (Neighborhood 2-B, Conditional)



Approximately 18.154 acres

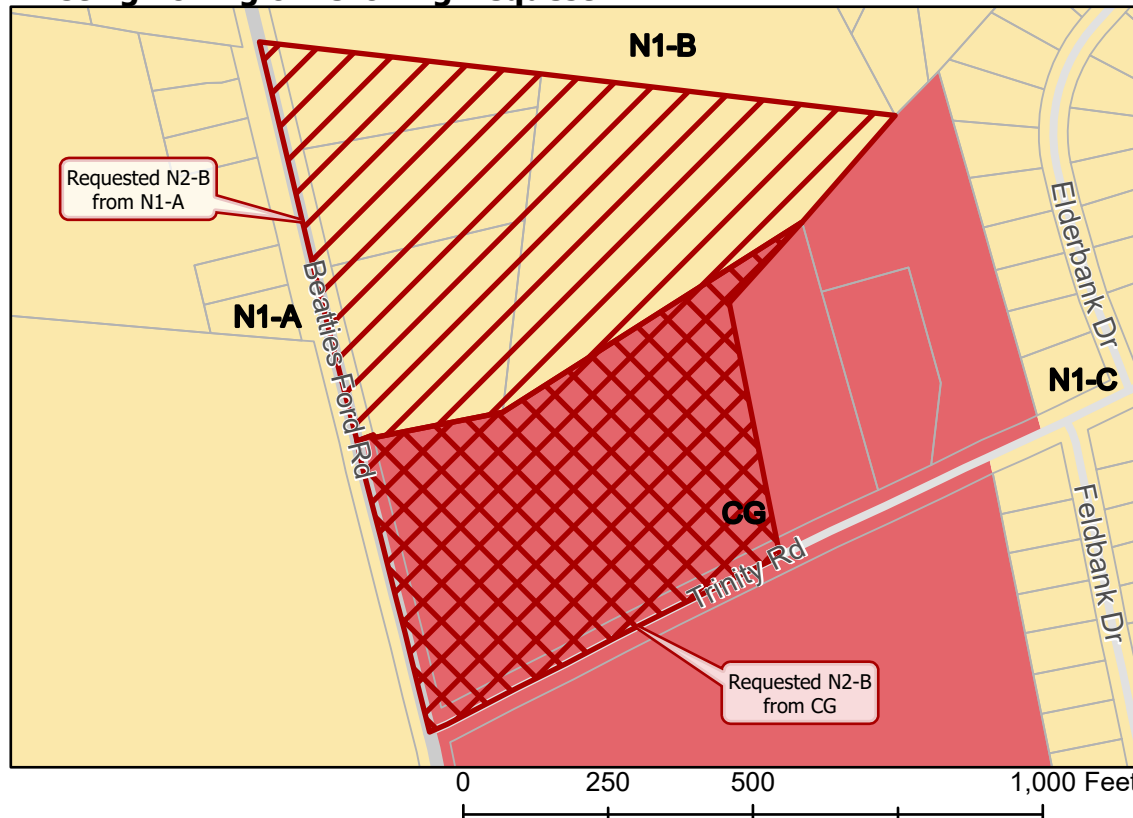
## Location of Requested Rezoning



- 2023-155
- Inside City Limits
- Parcel
- Streams
- FEMA Flood Plain
- City Council District**
- 2-Malcolm Graham



## Existing Zoning & Rezoning Request



- Requested N2-B from N1-A
- Requested N2-B from CG
- Zoning Classification**
- Neighborhood 1
- Commercial



Map Created 12/6/2023