

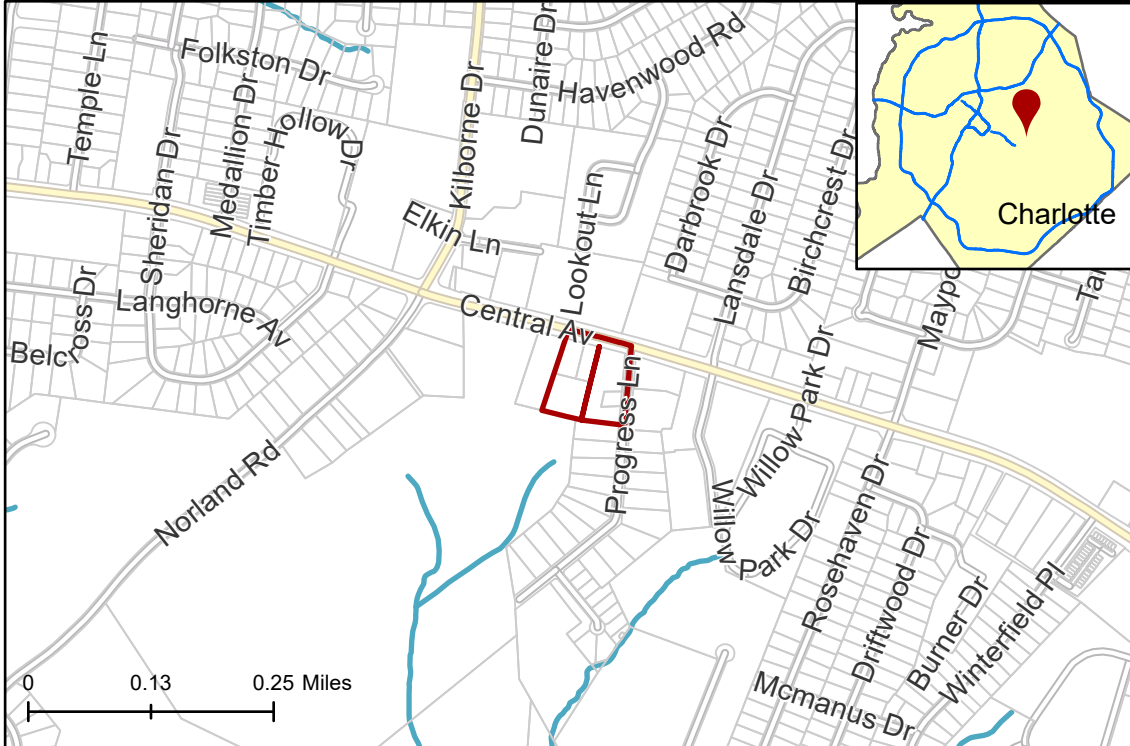
2023-120: Ascent Real Estate Capital, LLC

Rezoning Map

Requested Zoning O-1(CD) (Office, Conditional), N2-B (Neighborhood 2-B)
Requested Zoning N2-C(CD) (Neighborhood 2-C, Conditional)



Approximately 3.5 acres
Location of Requested Rezoning

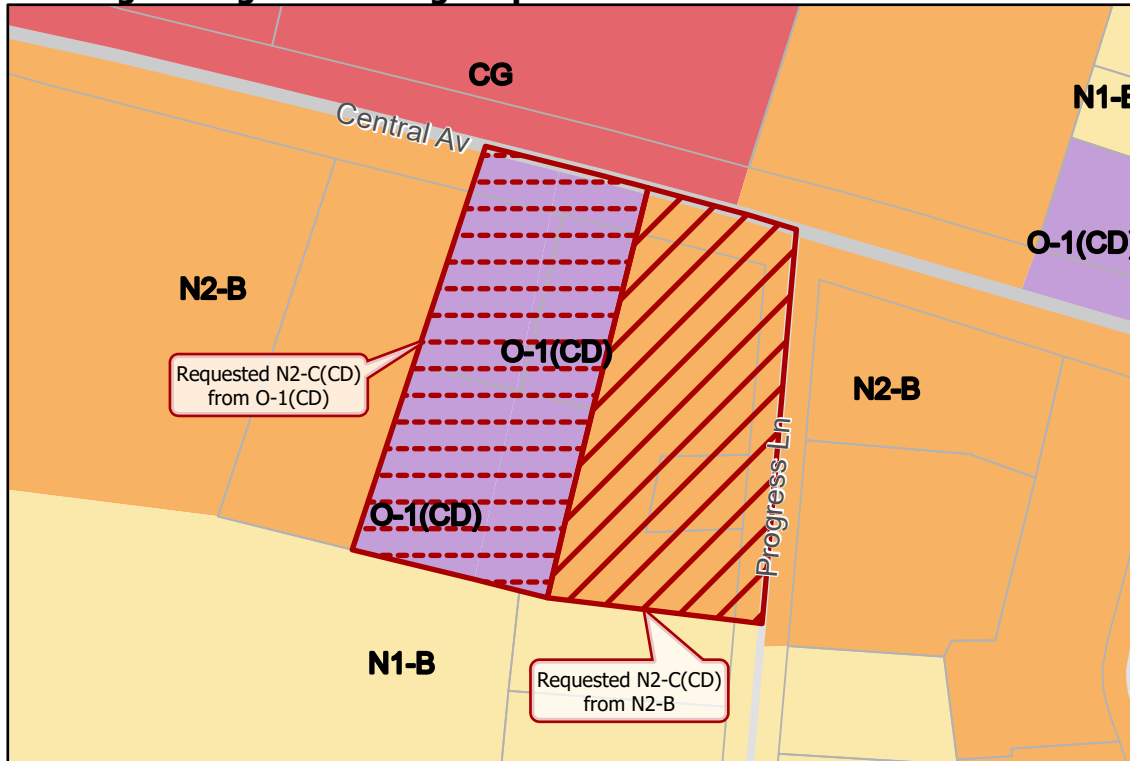


- 2023-120
- Inside City Limits
- Parcel
- Streams

- City Council District
- 5-Marjorie Molina



Existing Zoning & Rezoning Request



- Requested N2-C(CD) from N2-B
- Requested N2-C(CD) from O-1(CD)

Zoning Classification

- Neighborhood 1
- Neighborhood 2
- Office
- Commercial



Map Created 2/22/2024