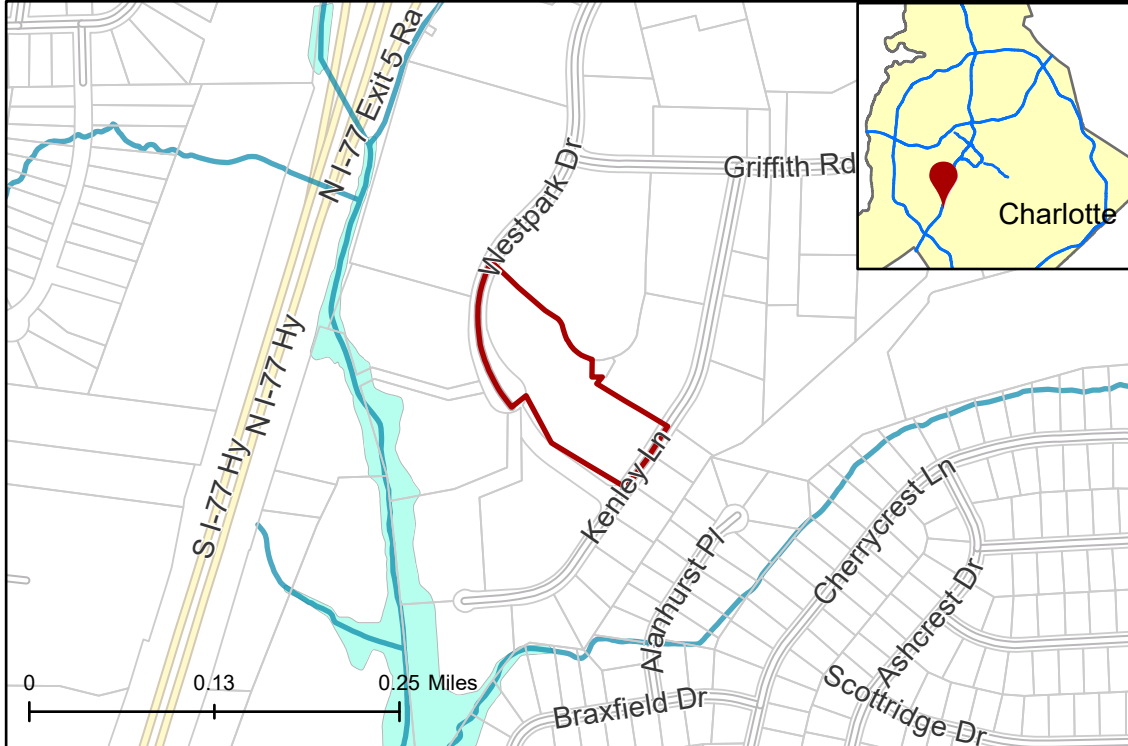


2022-221: Exeter 5815 Westpark LLC

Current Zoning I-1 (Light Industrial), I-2 (General Industrial)
Requested Zoning IMU (Innovation Mixed-Use)

Approximately 4.352 acres

Location of Requested Rezoning



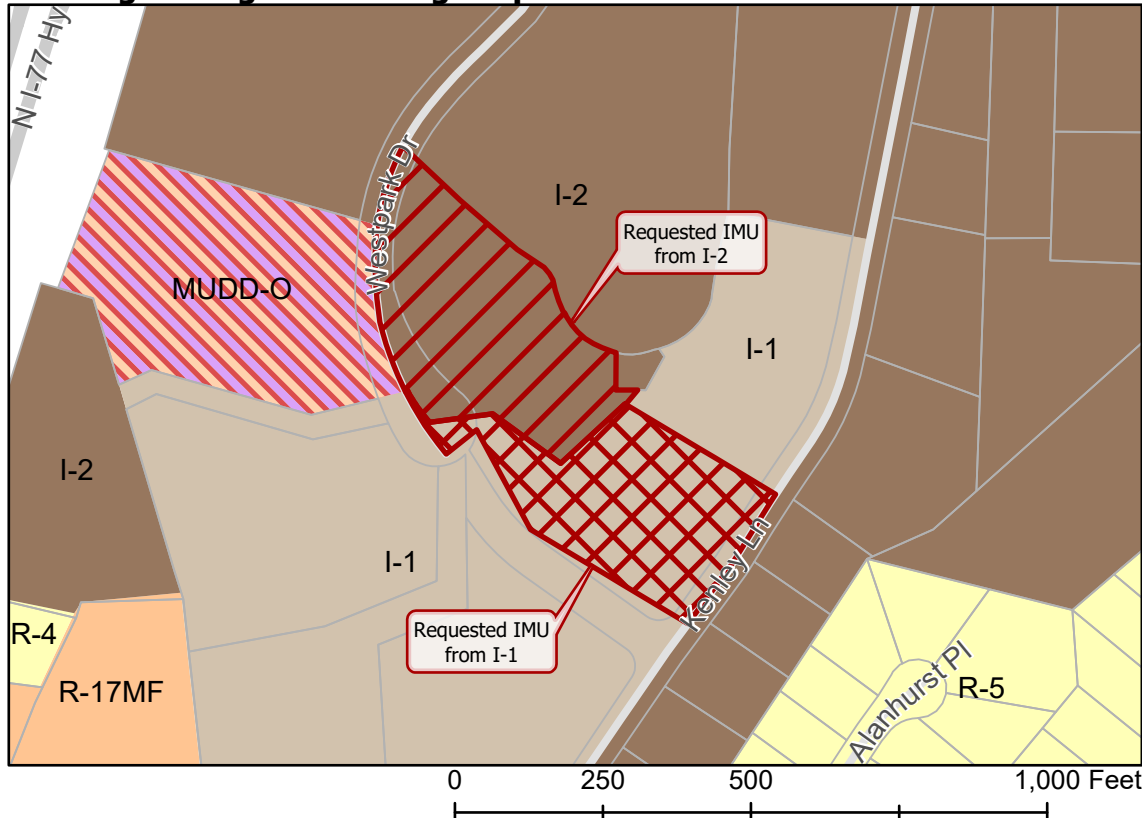
Rezoning Map



- 2022-221
- Inside City Limits
- Parcel
- Streams
- FEMA Flood Plain
- City Council District
3-Victoria Watlington



Existing Zoning & Rezoning Request



- Requested IMU from I-2
- Requested IMU from I-1
- Zoning Classification
 - Single Family
 - Multi-Family
 - Light Industrial
 - General Industrial
 - Mixed Use



Map Created 4/5/2023