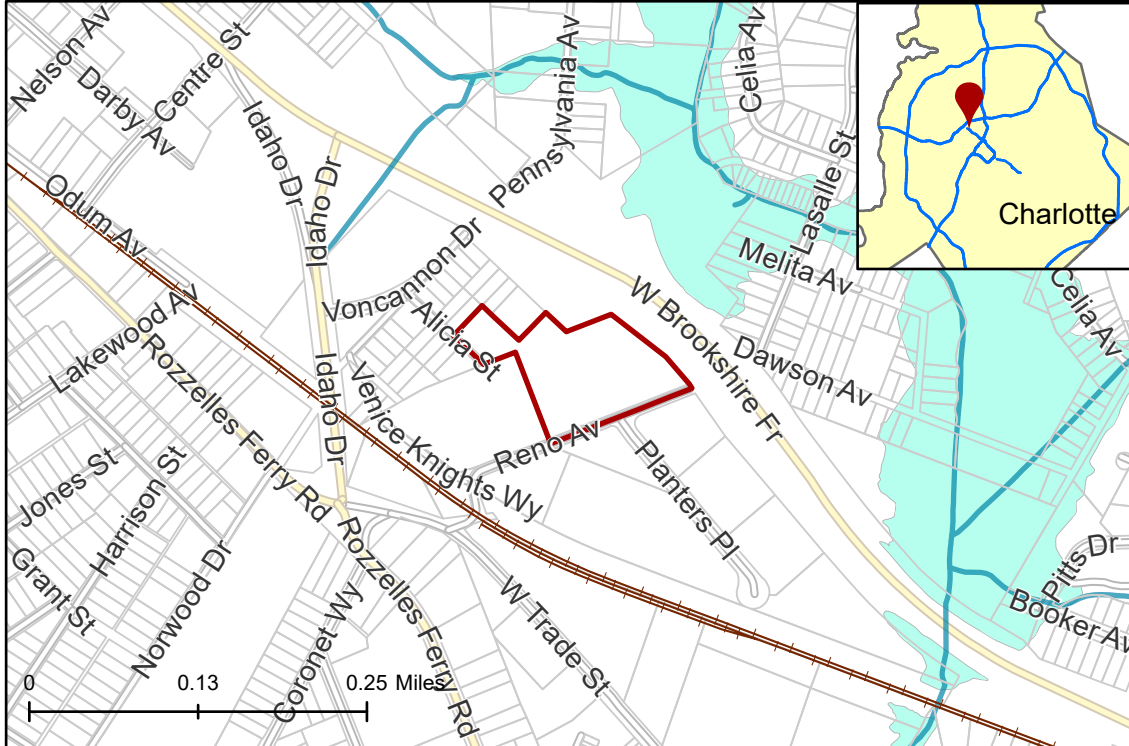


## 2022-217: Mecklenburg County

**Current Zoning** ML-2 (Manufacturing and Logistics 2)  
**Requested Zoning** IC-2 (Institutional Campus)

Approximately 5 acres

### Location of Requested Rezoning



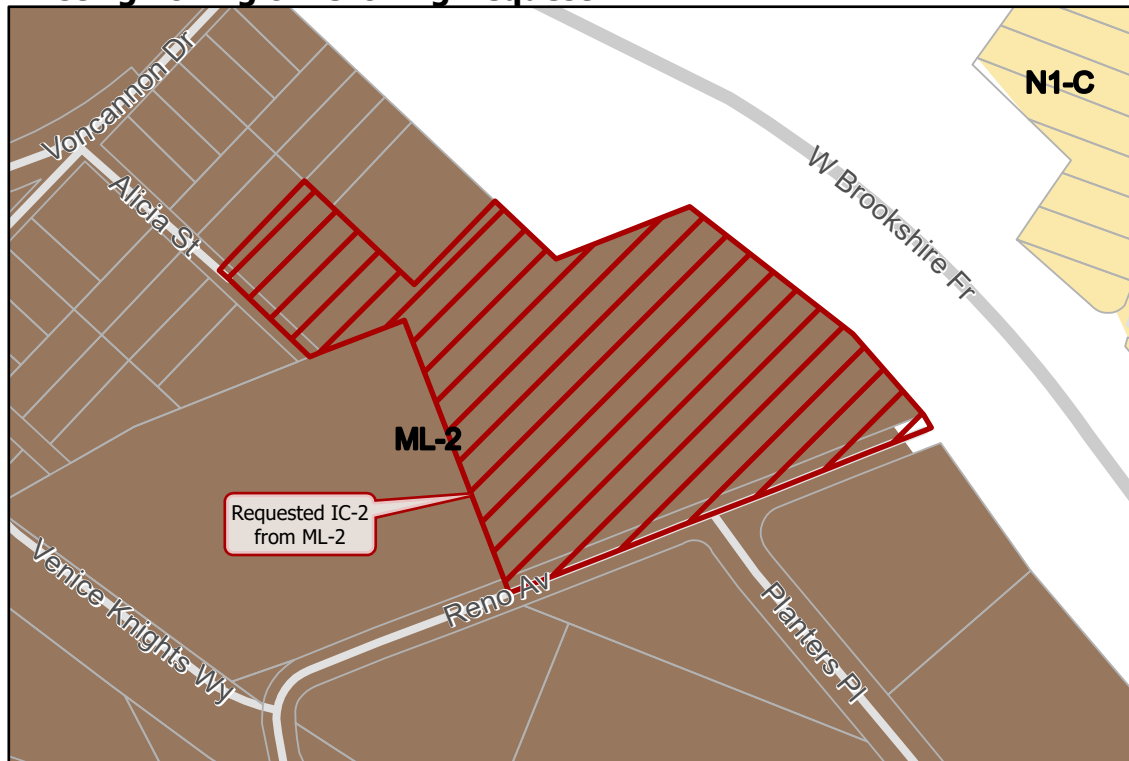
## Rezoning Map



- 2022-217
- Inside City Limits
- Parcel
- Railway
- Streams
- FEMA Flood Plain
- City Council District
- 2-Malcolm Graham



### Existing Zoning & Rezoning Request



- Requested IC-2 from ML-2
- Zoning Classification
- Neighborhood 1
- General Industrial



1,000 Feet  
Map Created 8/10/2023