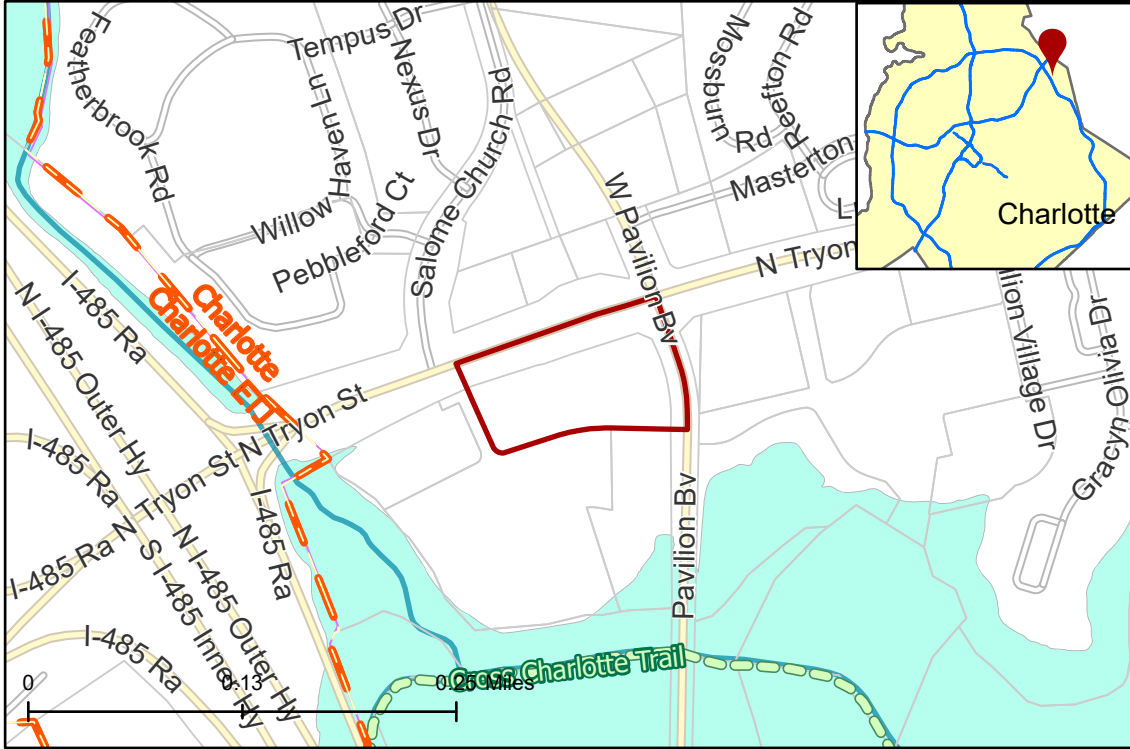


# 2022-196: Woodhaven Development Group

**Current Zoning** CC (Community Center)  
**Requested Zoning** CC SPA (Community Center, Site Plan Amendment)

Approximately 3.29 acres

## Location of Requested Rezoning



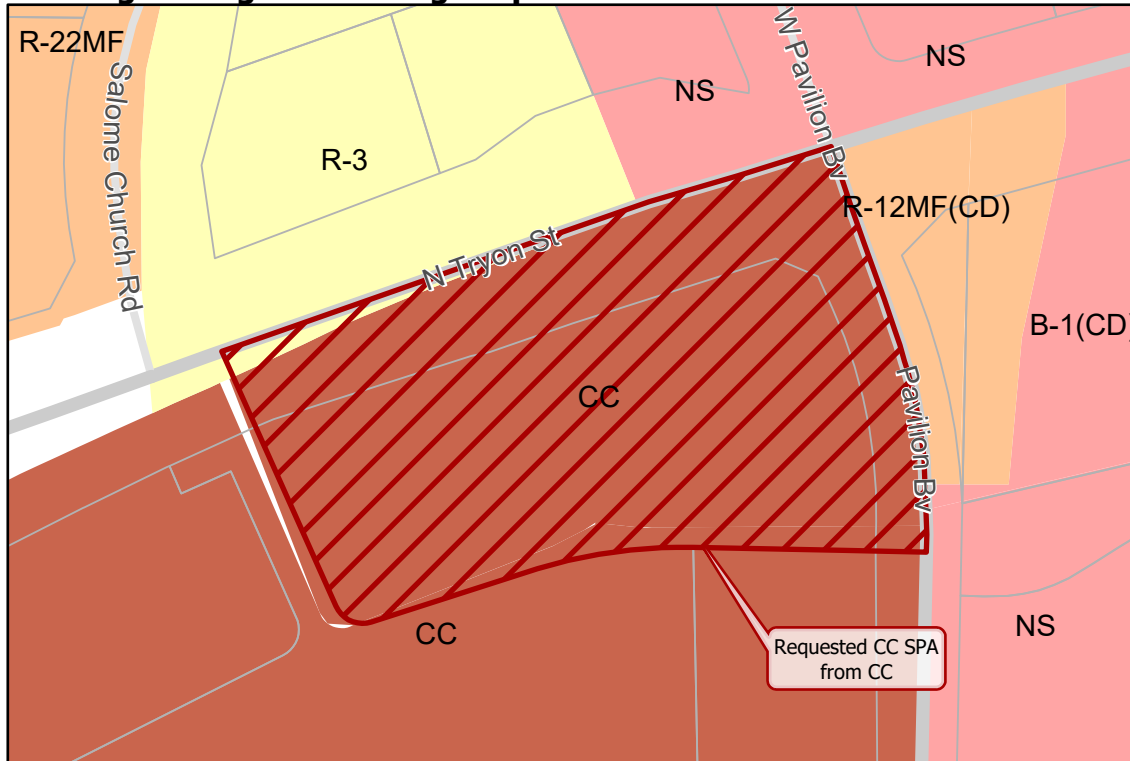
## Rezoning Map



- 2022-196
- Inside City Limits
- Parcel
- Cross Charlotte Trail
- Streams
- FEMA Flood Plain
- City Council District 4-Renee Johnson



## Existing Zoning & Rezoning Request



- Requested CC SPA from CC
- ### Zoning Classification
- Single Family
  - Multi-Family
  - Business
  - Commercial Center



0 125 250 500 Feet

Map Created 3/9/2023