

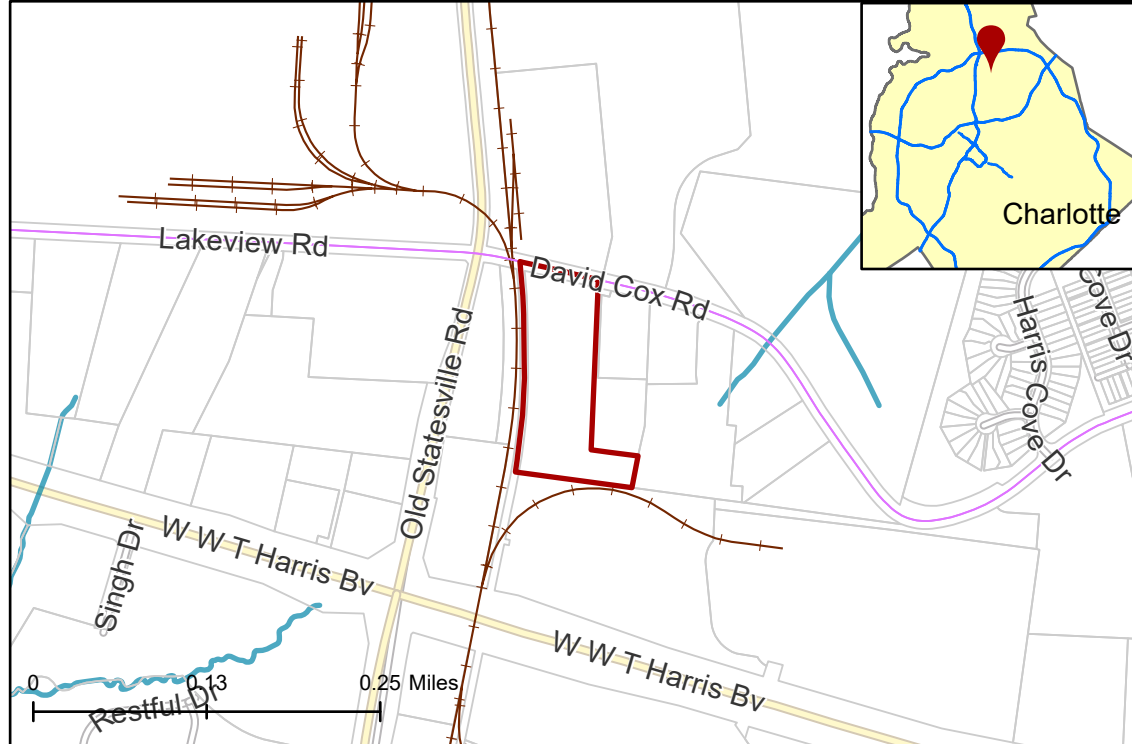
2022-185: Morningstar Properties, LLC

Current Zoning I-1 (Light Industrial)

Requested Zoning I-2 (General Industrial)

Approximately 6.018 acres

Location of Requested Rezoning



Rezoning Map



- 2022-185
- Inside City Limits
- Parcel
- Railway
- Streams
- FEMA Flood Plain
- City Council District
- 2-Malcolm Graham



Existing Zoning & Rezoning Request



- Requested I-2 from I-1
- Zoning Classification
- Light Industrial
- General Industrial



Map Created 3/8/2023