

2022-149: Flywheel Group

Current Zoning I-1 FEMA (Light Industrial, FEMA Floodplain)

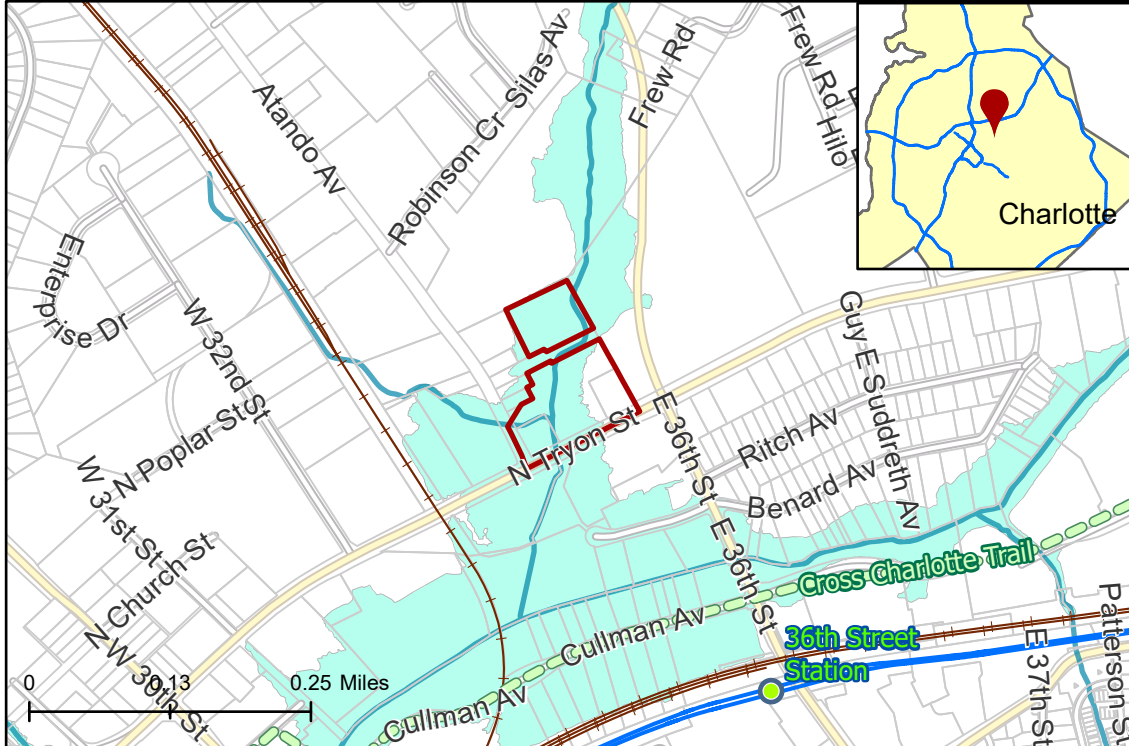
I-2 FEMA (General Industrial, FEMA Floodplain)

Requested Zoning TOD-UC FEMA (Transit Oriented Development-Urban Center, FEMA Floodplain)

TOD-NC FEMA (Transit Oriented Development-Neighborhood Center, FEMA Floodplain)

Approximately 5.91 acres

Location of Requested Rezoning



Rezoning Map



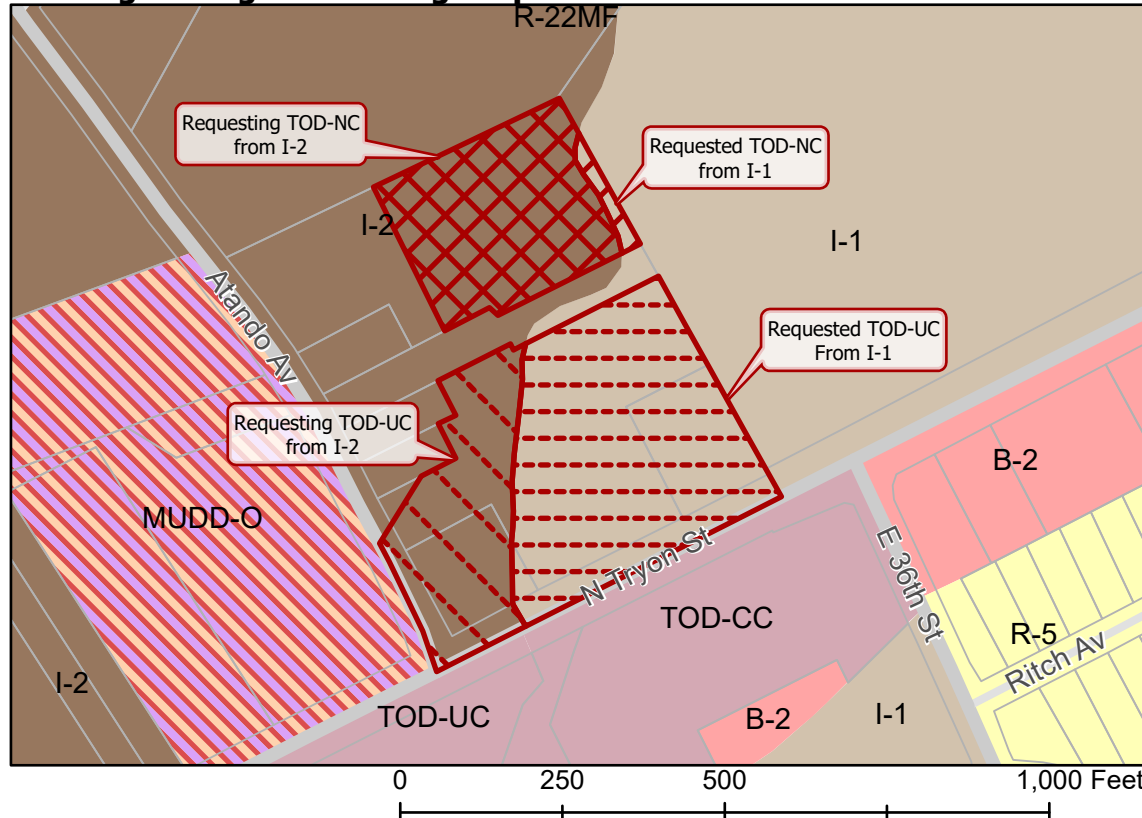
- 2022-149
- Inside City Limits
- Parcel
- LYNX Blue Line Station
- Cross Charlotte Trail
- LYNX Blue Line
- Railway
- Streams
- FEMA Flood Plain

City Council District

- 1-Dante Anderson



Existing Zoning & Rezoning Request



- Requesting TOD-NC from I-1
- Requesting TOD-NC from I-2
- Requesting TOD-UC from I-1
- Requesting TOD-UC from I-2

Zoning Classification

- Single Family
- Multi-Family
- Business
- Light Industrial
- General Industrial
- Mixed Use
- Transit-Oriented



Map Created 1/25/2023