

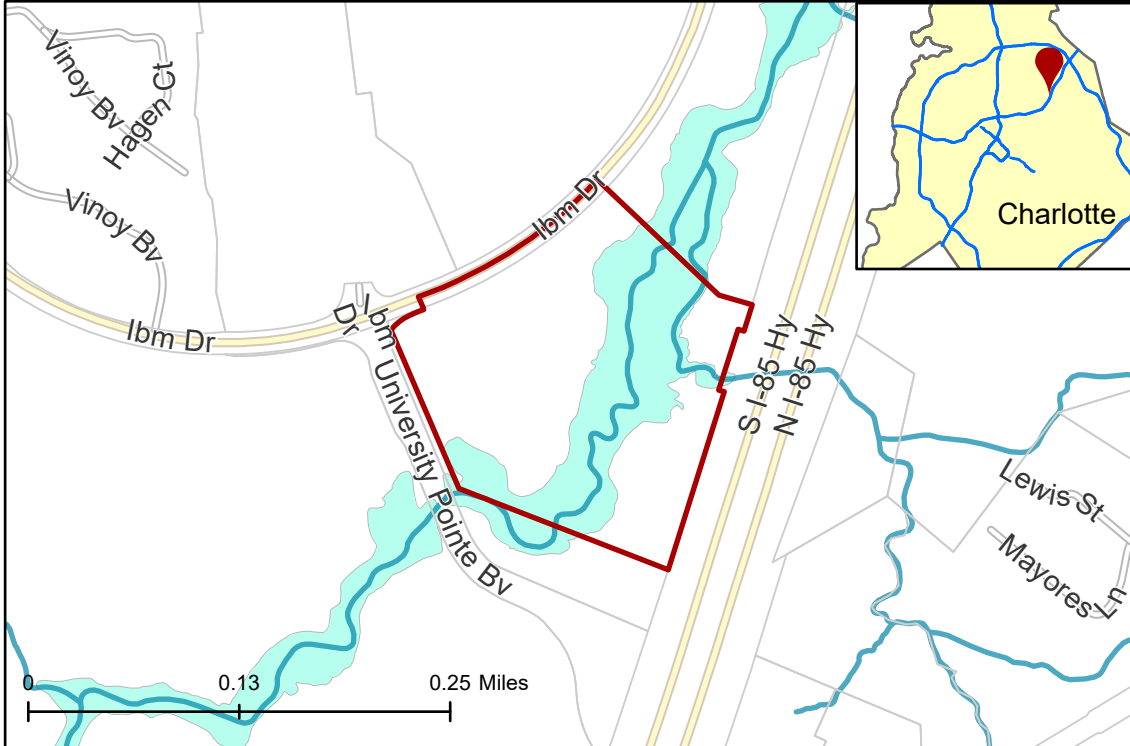
2022-132: Fall Line Development Inc.

Rezoning Map

Current Zoning RE-2 (Research)
Requested Zoning R-17MF(CD) (Multi-Family Residential, Conditional)



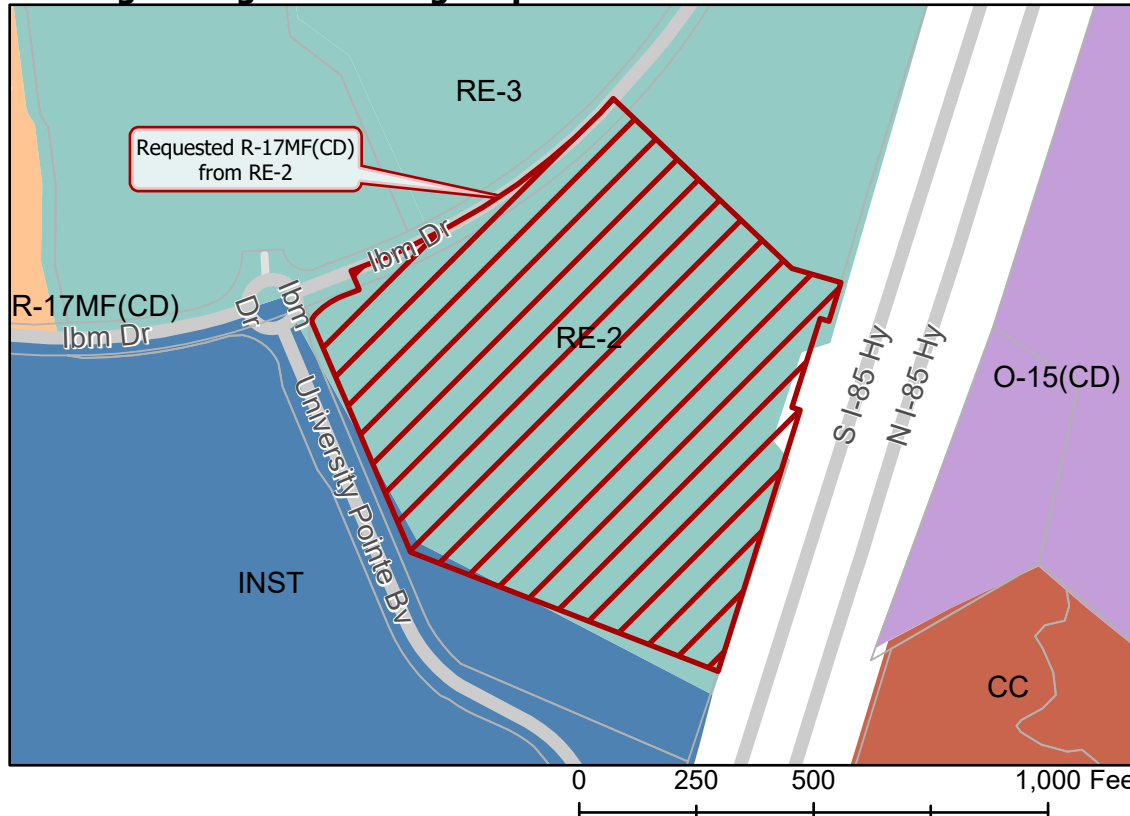
Approximately 17.95 acres
Location of Requested Rezoning



- 2022-132
- Inside City Limits
- Parcel
- Streams
- FEMA Flood Plain
- City Council District
- 4-Renee Johnson



Existing Zoning & Rezoning Request



- Requested R-17MF(CD) from RE-2
- Multi-Family
- Research
- Institutional
- Office
- Commercial Center



Map Created 12/5/2022