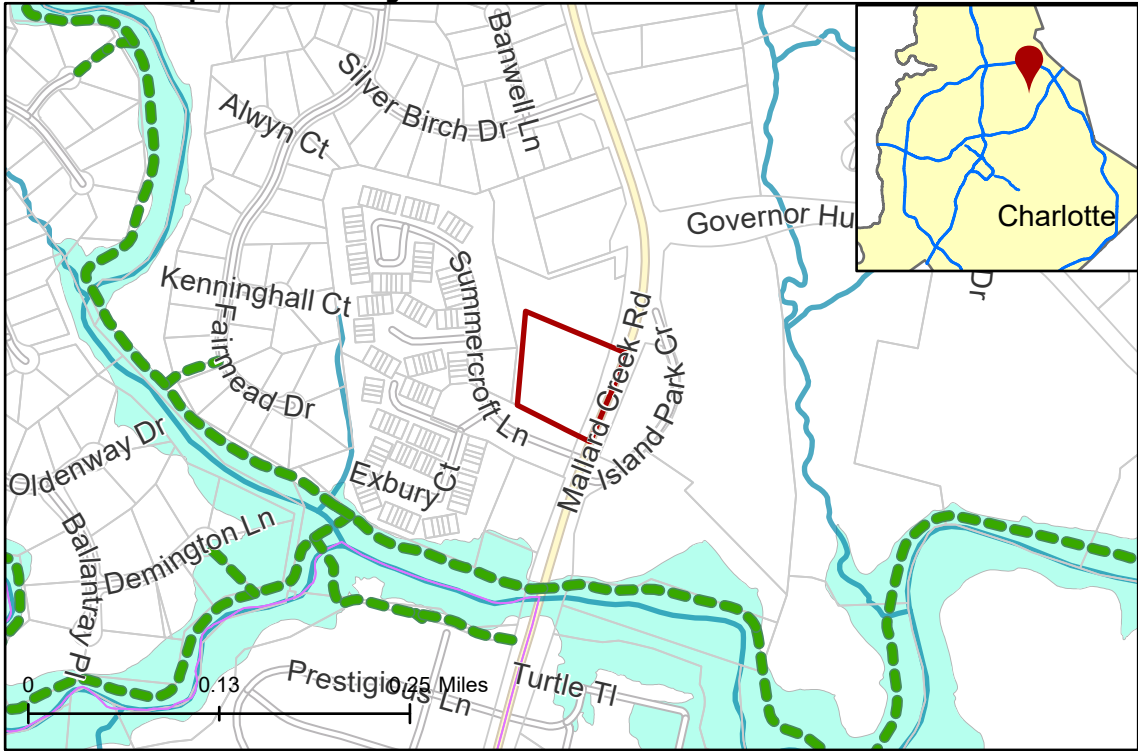


# 2022-128: Kinger Homes, LLC

**Current Zoning** R-3 (Single Family Residential)  
**Requested Zoning** R-8MF(CD) (Multi-Family Residential, Conditional)

Approximately 2.506 acres  
**Location of Requested Rezoning**



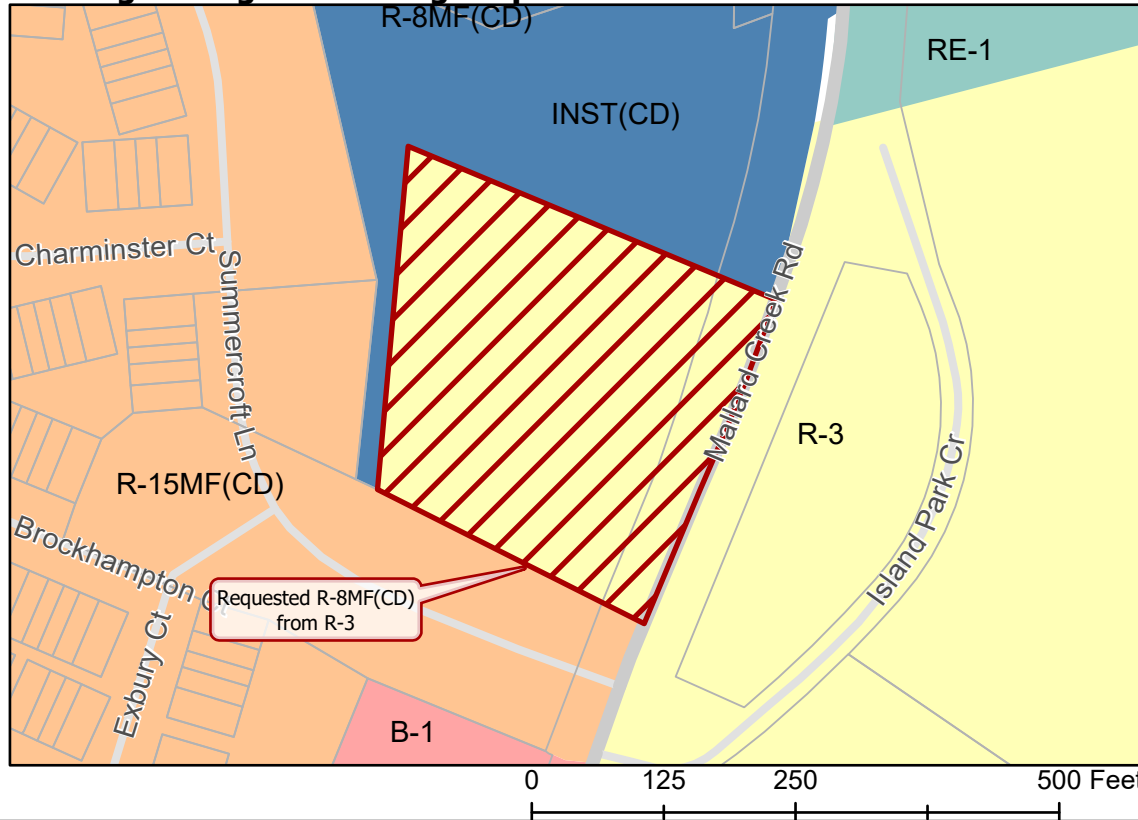
## Rezoning Map



- 2022-128
- Inside City Limits
- Parcel
- Greenway
- Streams
- FEMA Flood Plain
- City Council District**
- 4-Renee Johnson



## Existing Zoning & Rezoning Request



- Requested R-8MF(CD) from R-3
- Zoning Classification**
- Single Family
- Multi-Family
- Research
- Institutional
- Business



Map Created 12/5/2022