

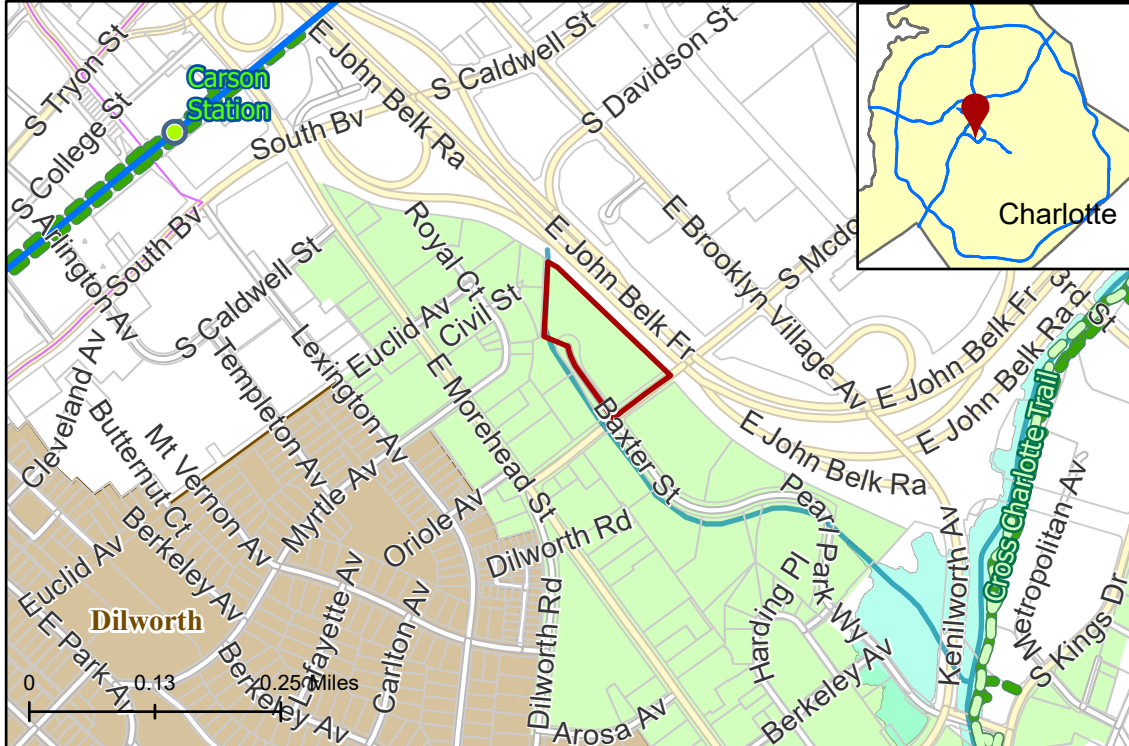
2022-112: The Charlotte-Mecklenburg Hospital Authority

Current Zoning B-2 PED (General Business, Pedestrian Overlay)

Requested Zoning UMUD (Uptown Mixed Use District)

Approximately 4.538 acres

Location of Requested Rezoning



Rezoning Map



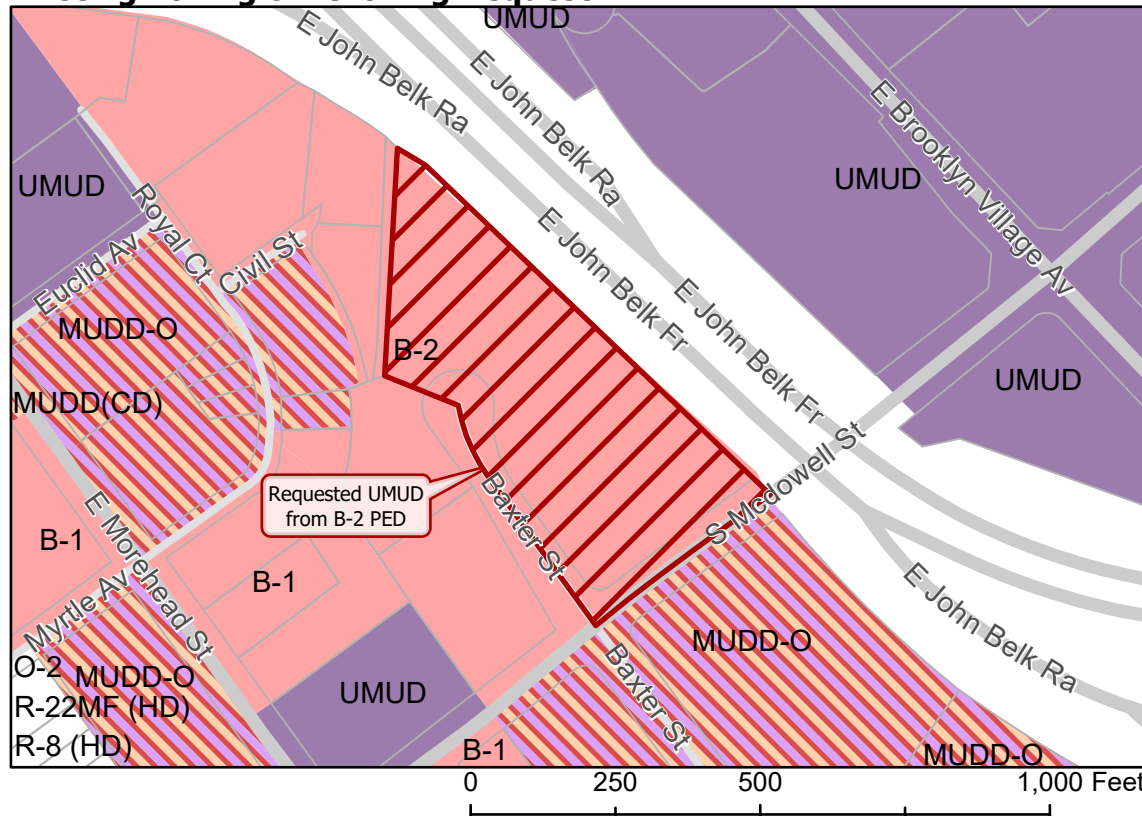
- 2022-112
- Inside City Limits
- Parcel
- LYNX Blue Line Station
- Cross Charlotte Trail
- LYNX Blue Line
- Greenway
- Streams
- FEMA Flood Plain
- Midtown Morehead Cherry
- Historic Districts

City Council District

- 1-Dante Anderson



Existing Zoning & Rezoning Request



- Requested UMUD from B-2 PED

Zoning Classification

- Office
- Business
- Uptown Mixed Use
- Mixed Use



Map Created 11/2/2022