

2022-067: CC Fund 3, LLC

Rezoning Map

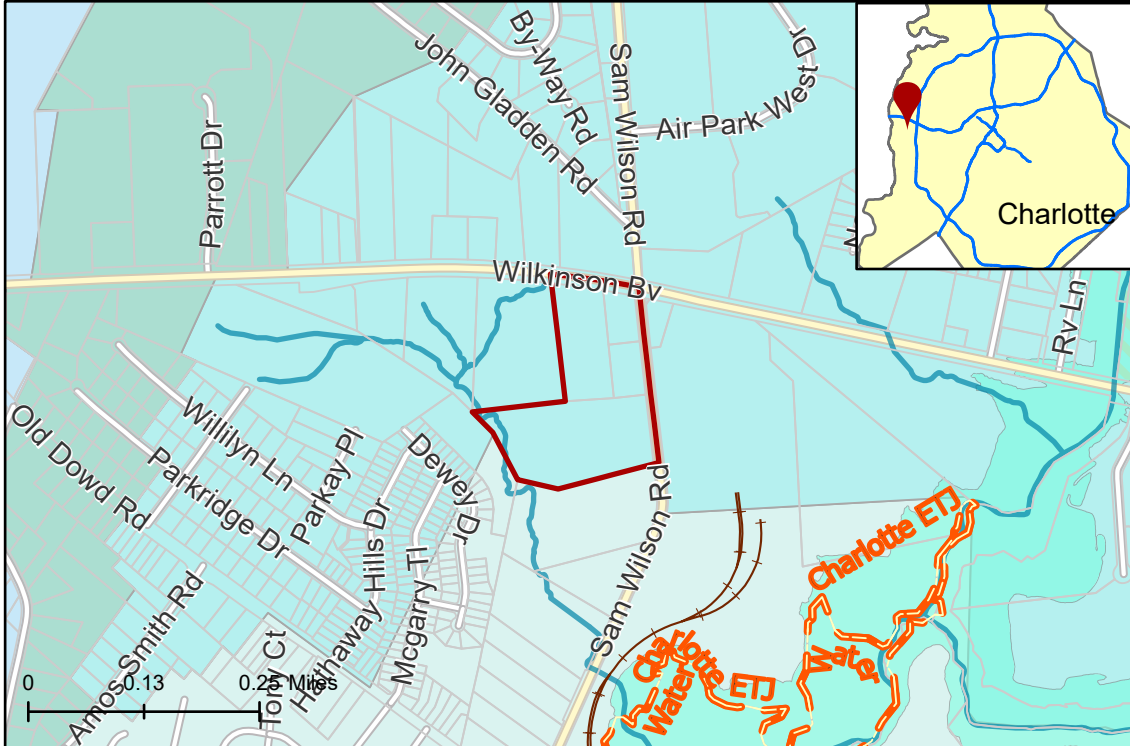
Current Zoning I-2(CD) LLWPA (General Industrial, Conditional, Lower Lake Wylie - Protected Area), B-2 LLWPA (General Business, Lower Lake Wylie - Protected Area)

Requested Zoning UR-3 LLWPA (Urban Residential, Lower Lake Wylie - Protected Area)



Approximately 15.92 acres

Location of Requested Rezoning



- 2022-067
- Outside City Limits
- Parcel
- Railway
- Streams
- FEMA Flood Plain
- Airport Noise Overlay
- Lake Wylie - Critical Area
- Lake Wylie - Protected Area
- Lower Lake Wylie - Critical Area
- Lower Lake Wylie - Protected Area

Adjacent to City Council District

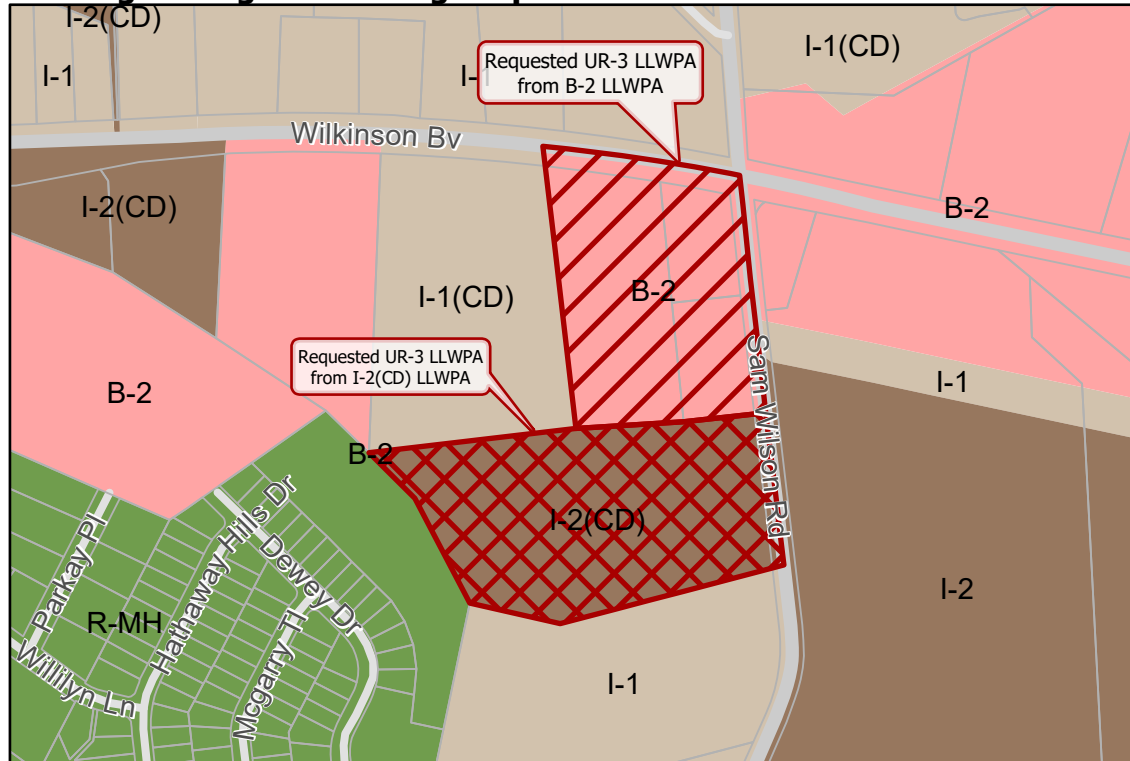
3-Victoria Watlington

County Commissioner

2-Vilma D. Leake



Existing Zoning & Rezoning Request



Requested UR-3 LLWPA from B-2 LLWPA

Requested UR-3 LLWPA from I-2(CD) LLWPA

Zoning Classification

- Manufactured Home
- Business
- Light Industrial
- General Industrial



Map Created 1/26/2023