

2022-038: THE RMR GROUP, LLC

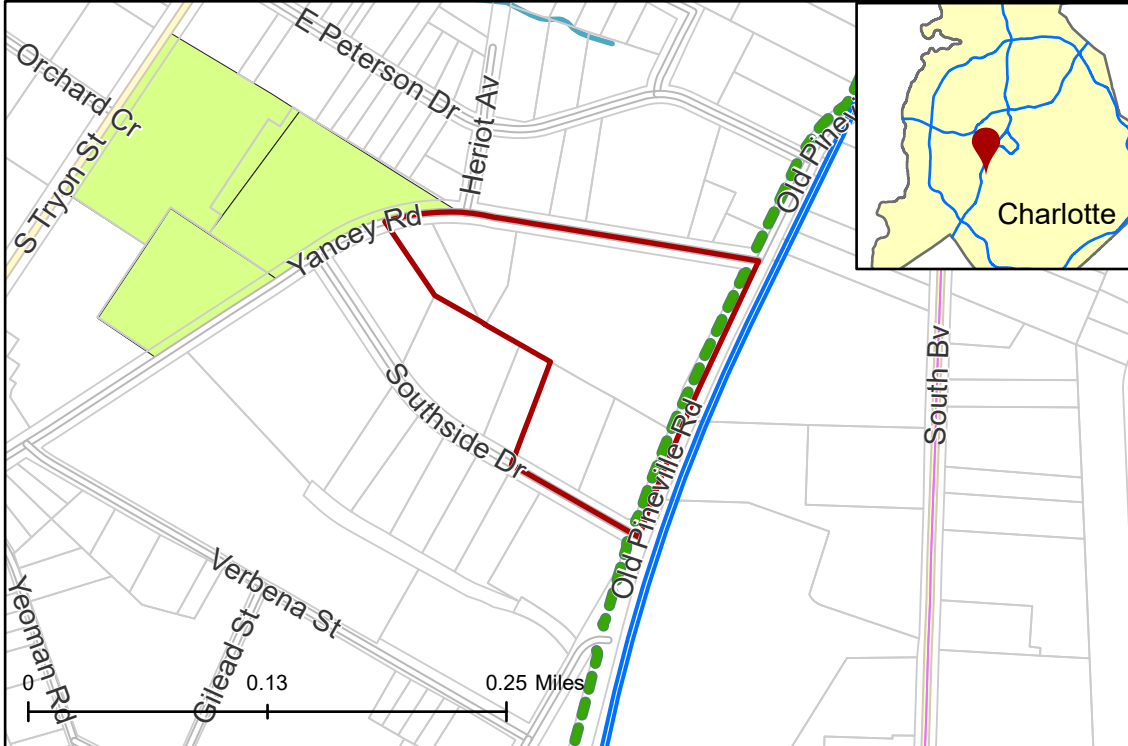
Rezoning Map

Current Zoning MUDD-O (Mixed Use Development District, Optional), I-2 (General Industrial)
Requested Zoning TOD-CC (Transit Oriented Development - Community Center)



Approximately 8.796 acres

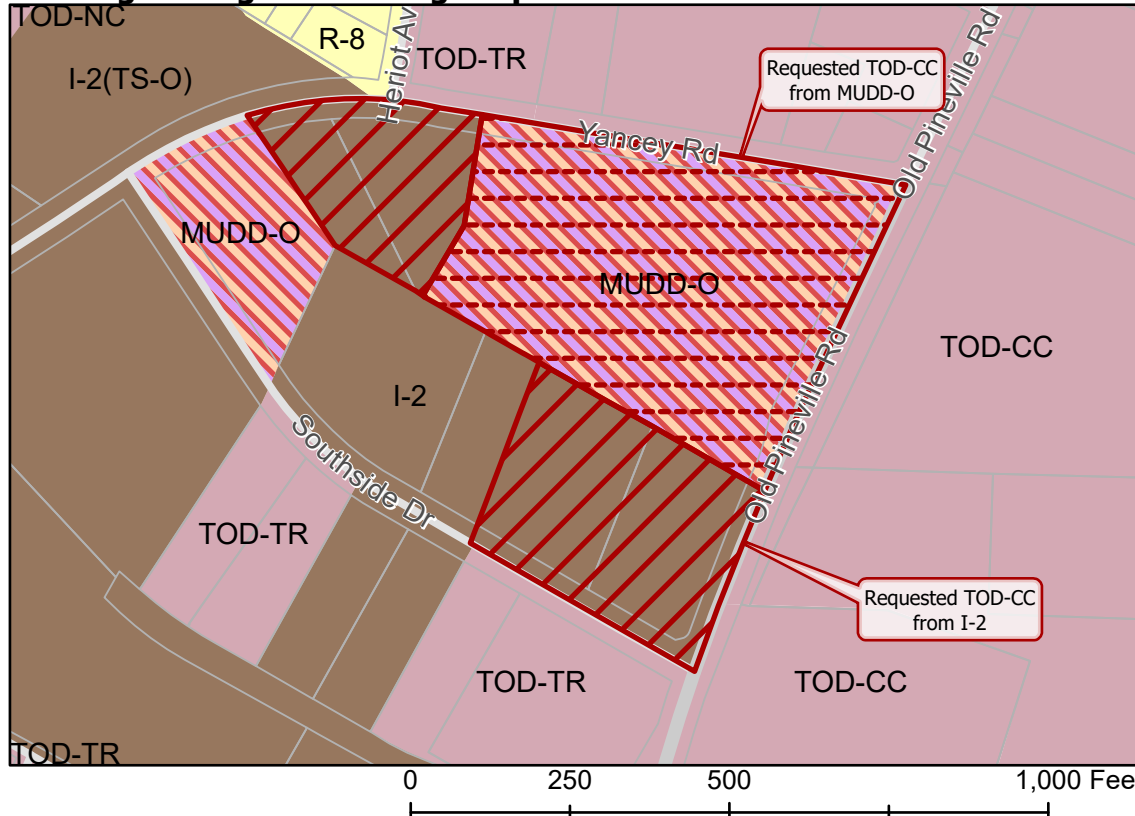
Location of Requested Rezoning



- 2022-038
- Inside City Limits
- Parcel
- LYNX Blue Line
- Greenway
- Streams
- Transit Supportive Overlay
- City Council District**
- 3-Victoria Watlington



Existing Zoning & Rezoning Request



- Requested TOD-CC from I-2
- Requested TOD-CC from MUDD-O
- Zoning Classification**
- Single Family
- General Industrial
- Mixed Use
- Transit-Oriented

