

# NORTH END DEPOT

## REZONING

CHARLOTTE, NC

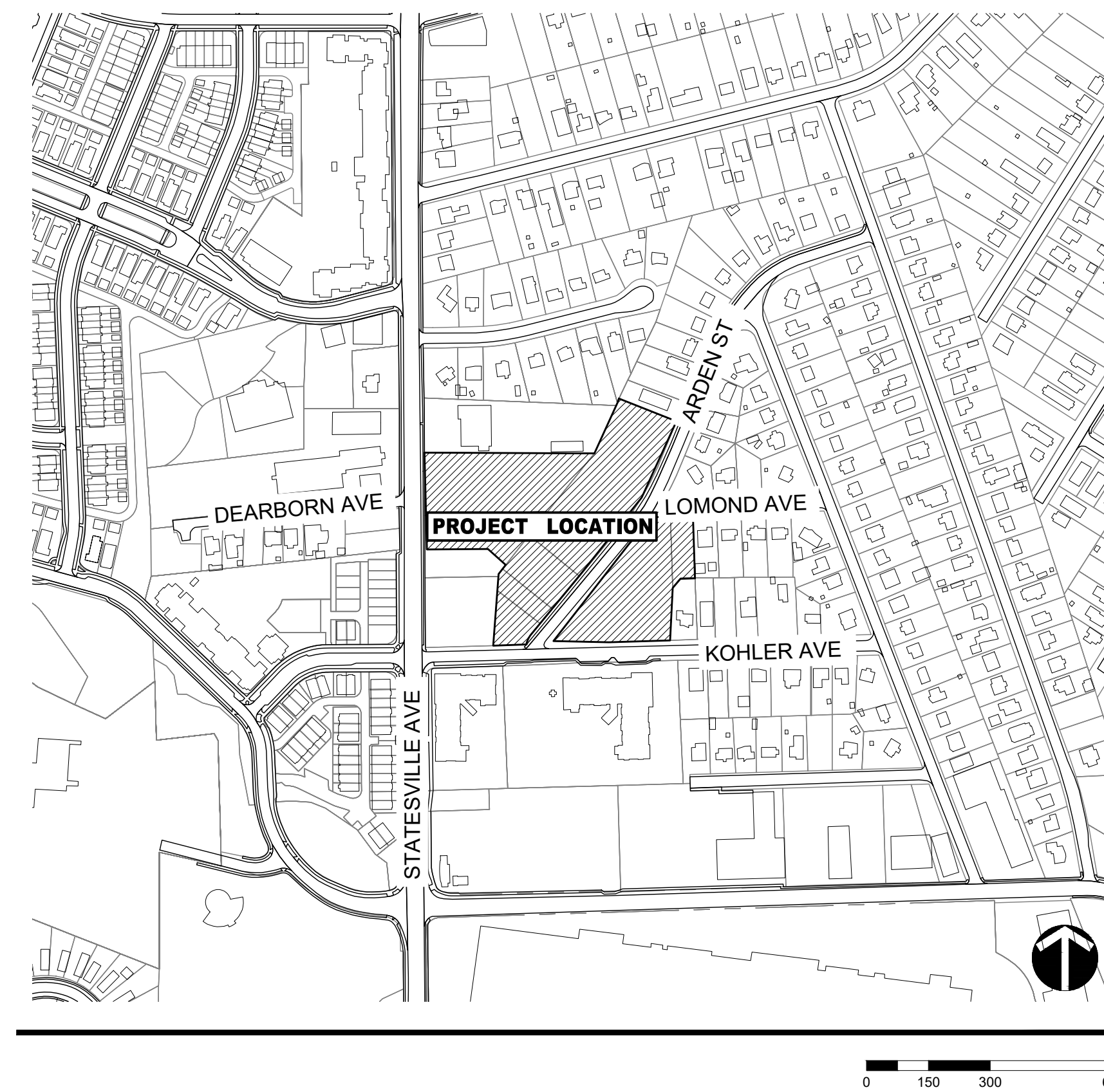
DATE: 10/17/2022

PETITION # 2021-083

### CHAPTER INDEX

Sheet List Table	
Sheet Number	Sheet Title
G-01	COVER
RZ-01	EXISTING CONDITIONS PLAN
RZ-02	TECHNICAL DATA SHEET
RZ-03	SCHEMATIC SITE PLAN
RZ-04	DEVELOPMENT NOTES

### VICINITY MAP



### PROJECT TEAM

#### PETITIONER

MQC1, LLC  
2302 STATESVILLE AVENUE  
CHARLOTTE, NC 28202

#### LANDSCAPE ARCHITECT

LANDDESIGN  
223 NORTH GRAHAM STREET  
CHARLOTTE, NC 28202  
704.333.0325  
CONTACT NAME:  
RICHARD PETERSHEIM

#### MASTER DEVELOPER

FOULGER-PRATT  
12435 PARK POTOMAC AVENUE  
SUITE 200  
POTOMAC, MD 20854  
240.499.9600

#### ARCHITECT

BB+M  
1900 W MOREHEAD ST  
SUITE 200  
CHARLOTTE, NC 28208  
704.334.1716

#### SURVEYOR

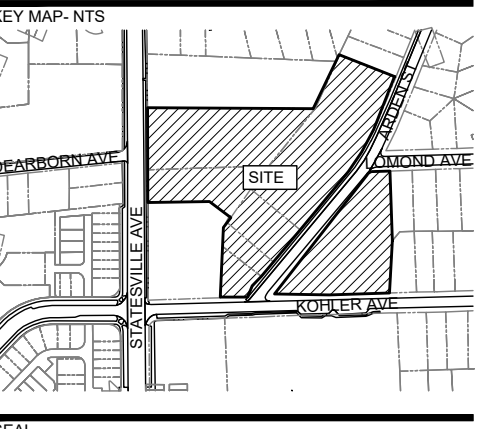
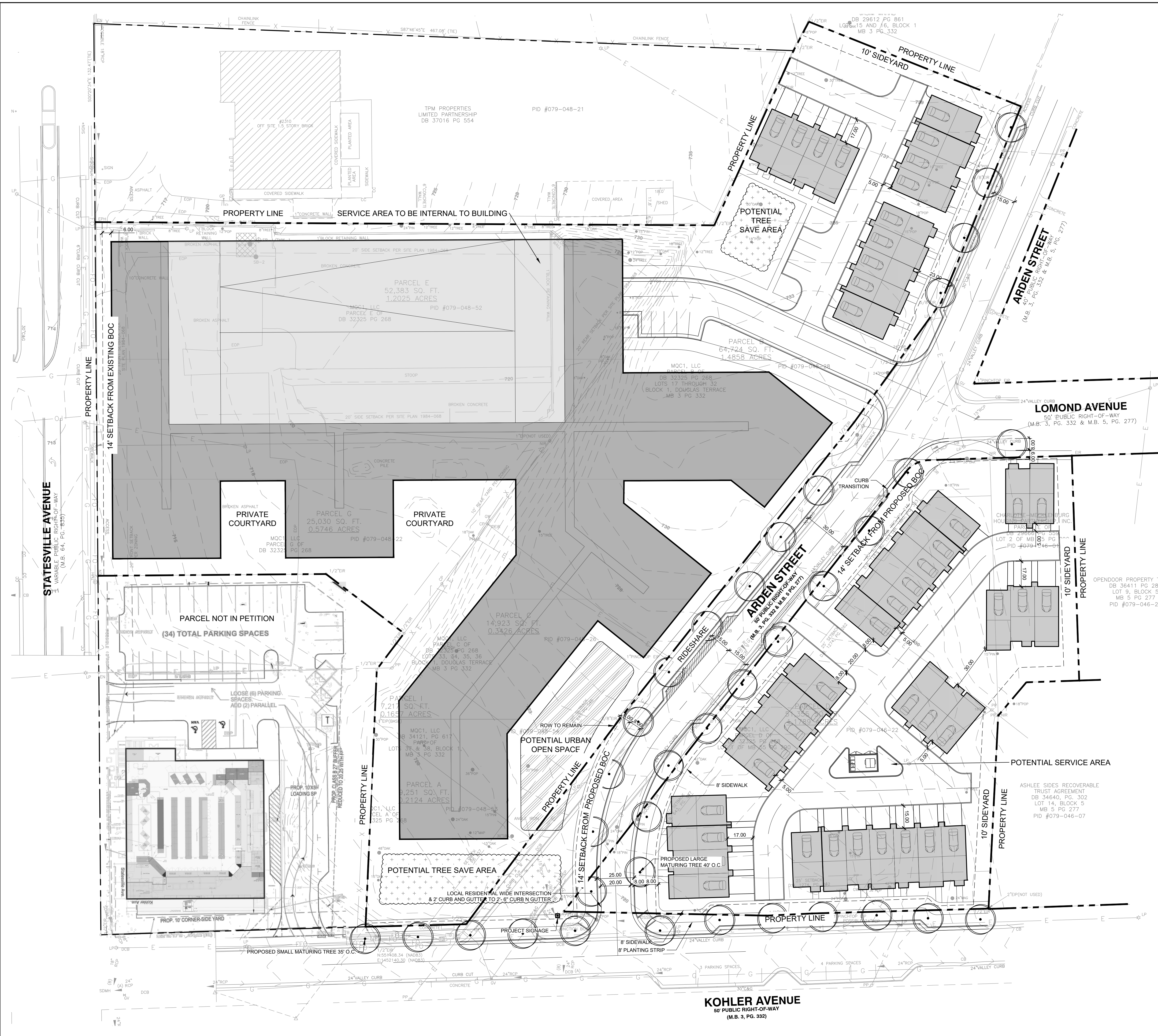
R.B. PHARR & ASSOCIATES  
969 E 7TH ST.  
CHARLOTTE, NC 28204  
704.376.2186

NORTH END  
DEPOT  
LD PN 1022163  
COVER

LandDesign.







**NOT FOR CONSTRUCTION**

**NORTH END DEPOT**

MOC1, LLC  
 2302 STATESVILLE AVENUE  
 CHARLOTTE, NC 28206

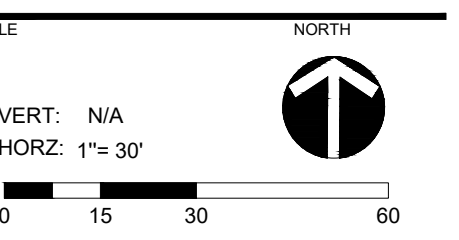
**PETITION # 2021-083**

LANDDESIGN PROJ# 1022163

**REVISION / ISSUANCE**

NO.	DESCRIPTION	DATE
	REZONING SET	10/17/2022

DESIGNED BY: LD  
 DRAWN BY: LD  
 CHECKED BY: LD



**SCHEMATIC SITE PLAN**

SHEET NUMBER **RZ-03**

