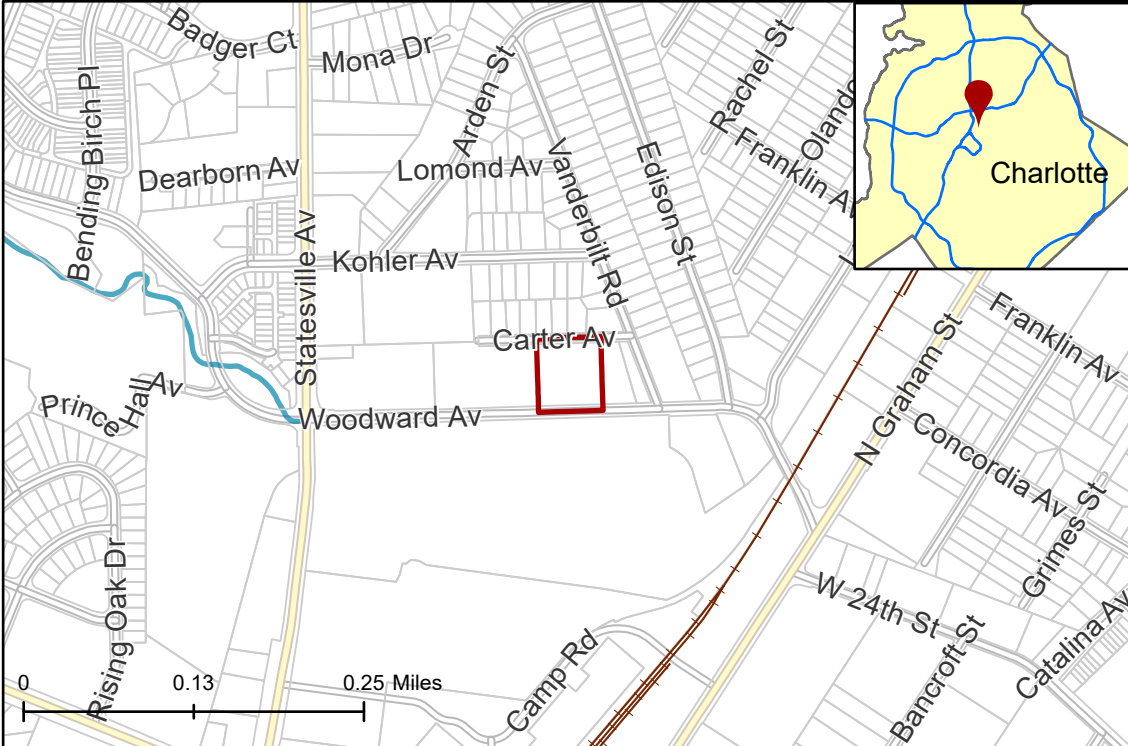


# 2021-245: CC Fund 3, LLC

**Current Zoning** I-2 (General Industrial)  
**Requested Zoning** MUDD(CD) (Mixed Use Development District, Conational)

Approximately 1.44 acres

## Location of Requested Rezoning



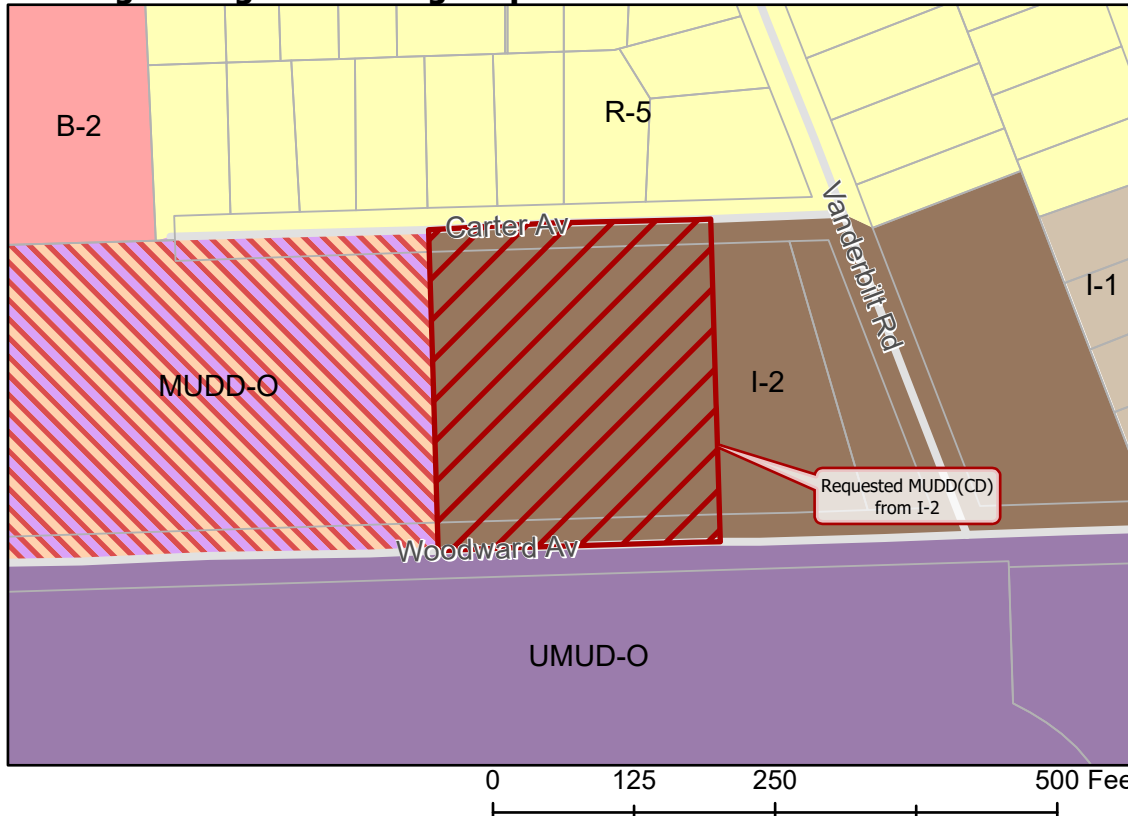
## Rezoning Map



- 2021-245
- Inside City Limits
- Parcel
- Railway
- Streams
- City Council District**
- 1-Larken Egleston



## Existing Zoning & Rezoning Request



- Requested MUDD(CD) from I-2
- Zoning Classification**
- Single Family
- Business
- Uptown Mixed Use
- Light Industrial
- General Industrial
- Mixed Use



Map Created 2/18/2022