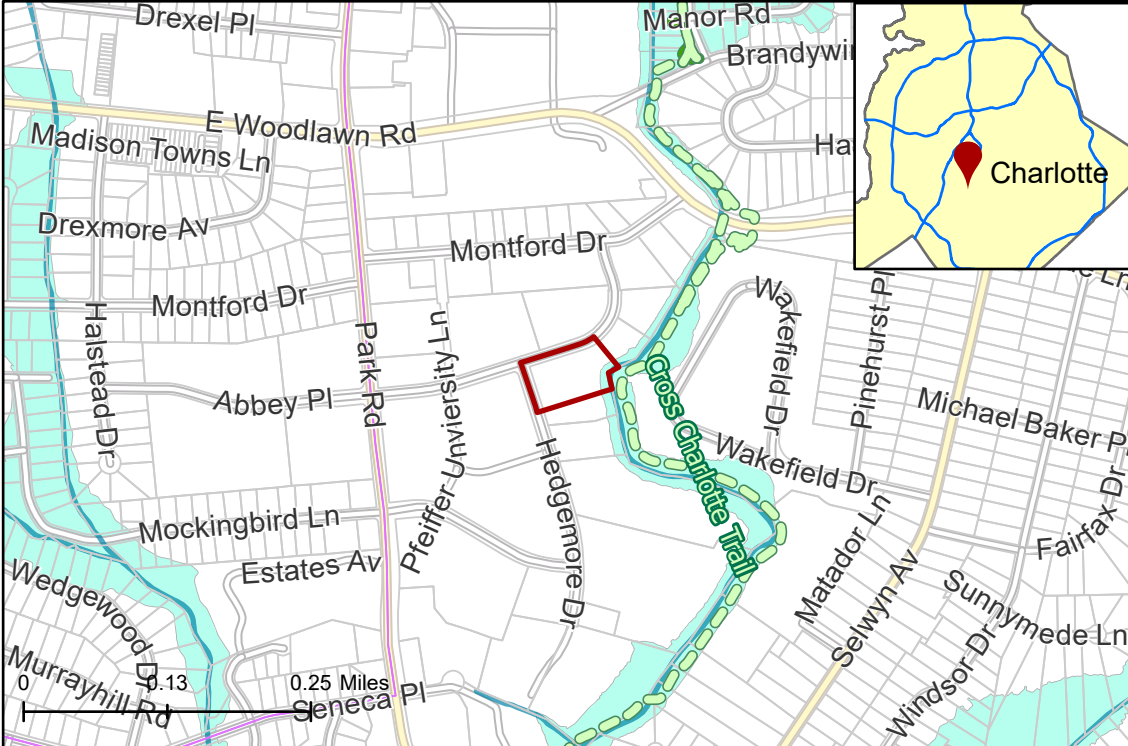


2021-240: Ascent Real Estate Capital, LLC

Current Zoning MUDD(CD) (Mixed Use Development District, Conditional)
Requested Zoning MUDD-O (Mixed Use Development District, Optional)

Approximately 1.67 acres

Location of Requested Rezoning



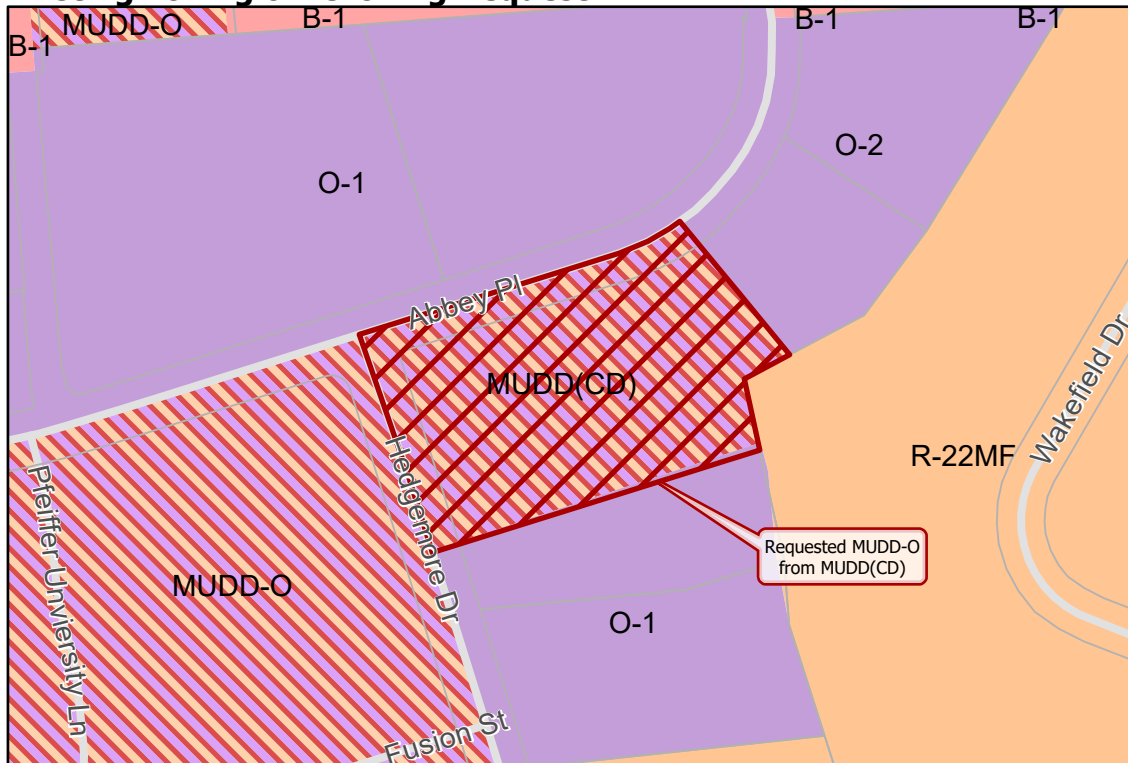
Rezoning Map



- 2021-240
- Inside City Limits
- Parcel
- Cross Charlotte Trail
- Greenway
- Streams
- FEMA Flood Plain
- City Council District**
- 6-Tariq Bokhari



Existing Zoning & Rezoning Request



- Requested MUDD-O from MUDD(CD)
- Zoning Classification**
- Multi-Family
- Office
- Business
- Mixed Use



Map Created 2/18/2022