

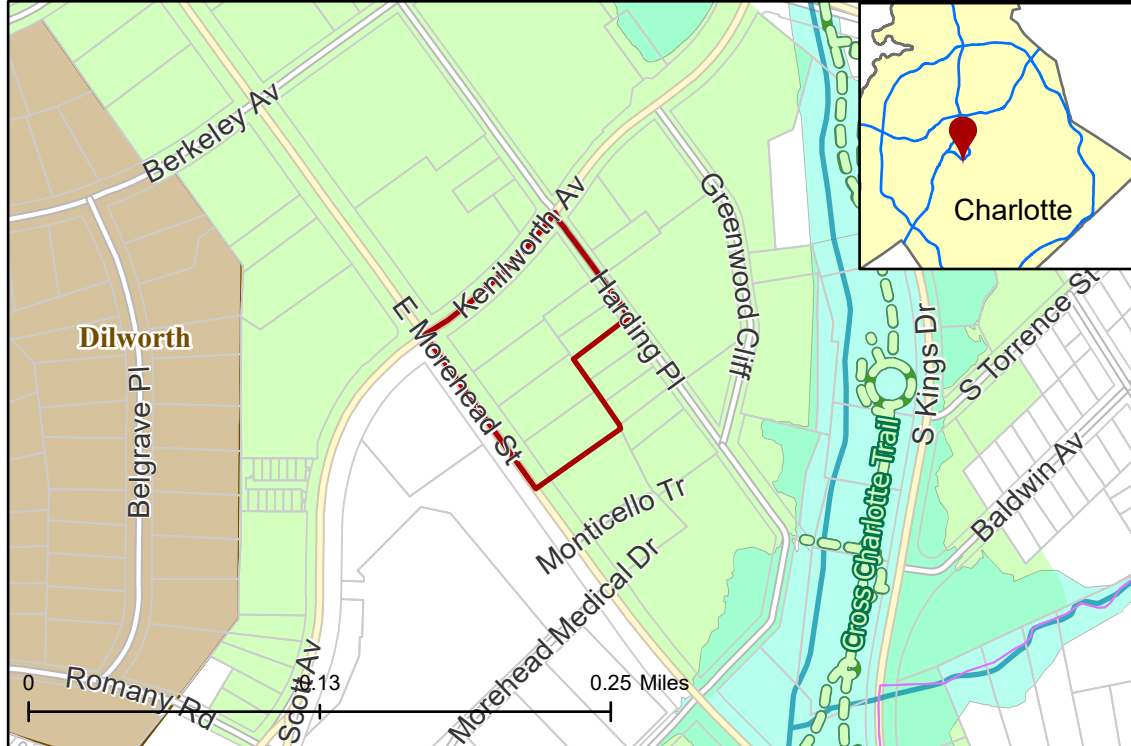
## 2021-219: Lincoln Property Company

**Current Zoning** MUDD-O, SPA, PED (Mixed Use Development District, Optional, Site Plan Amendment, Pedestrian Overlay)

**Requested Zoning** MUDD-O, SPA, PED (Mixed Use Development District, Optional, Site Plan Amendment, Pedestrian Overlay)

Approximately 2.65 acres

### Location of Requested Rezoning



## Rezoning Map



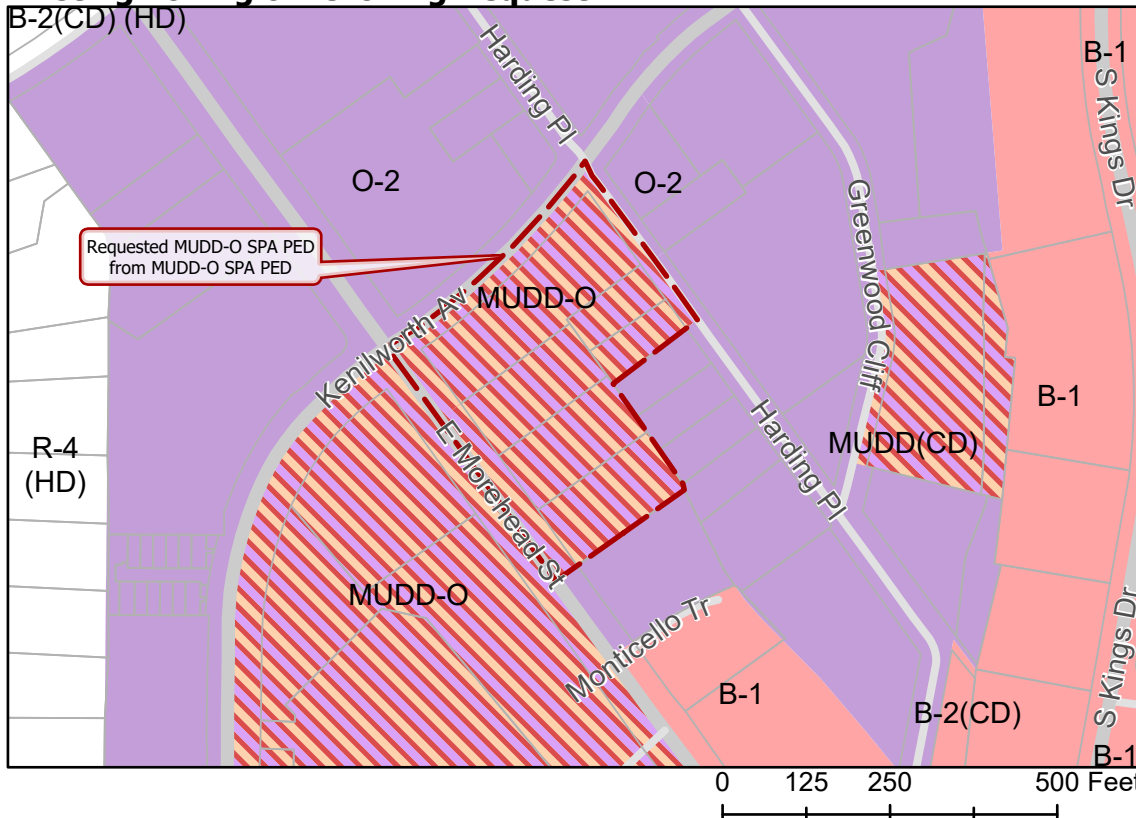
- 2021-219
- Inside City Limits
- Parcel
- Cross Charlotte Trail
- Greenway
- Streams
- FEMA Flood Plain
- Midtown Morehead Cherry
- Historic Districts

### City Council District

- 1-Larken Egleston



### Existing Zoning & Rezoning Request



- Requested MUDD-O SPA PED from MUDD-O SPA PED

### Zoning Classification

- Office
- Business
- Mixed Use



Map Created 12/30/2021