

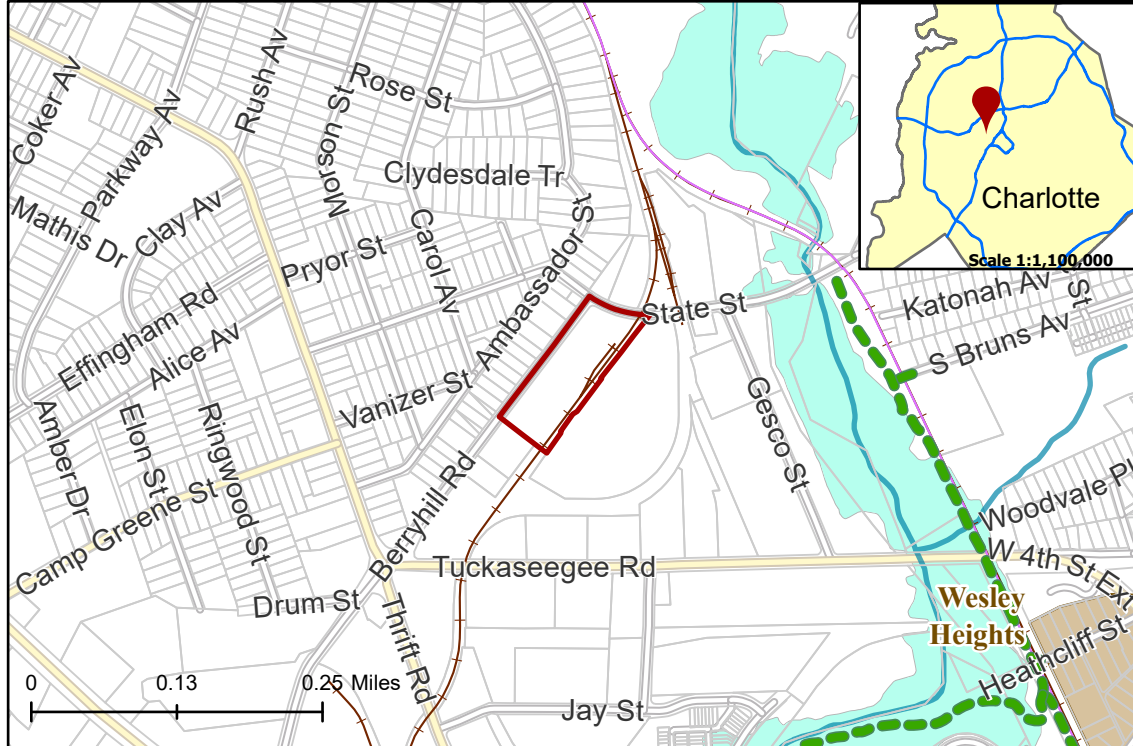
# 2021-168: Station West, LLC

**Current Zoning** I-2 (General Industrial)

**Requested Zoning** MUDD-O (Mixed Use Development District, Optional)

Approximately 3.833 acres

## Location of Requested Rezoning



# Rezoning Map



**CHARLOTTE**  
PLANNING, DESIGN  
& DEVELOPMENT

- 2021-168
- Inside City Limits
- Parcel
- Greenway
- Railway
- Streams
- FEMA Flood Plain
- Historic Districts
- City Council District**
- 3-Victoria Watlington



## Existing Zoning & Rezoning Request



- Requested MUDD-O from I-2
- Zoning Classification**
- Single Family
- General Industrial



Map Created 10/27/2021