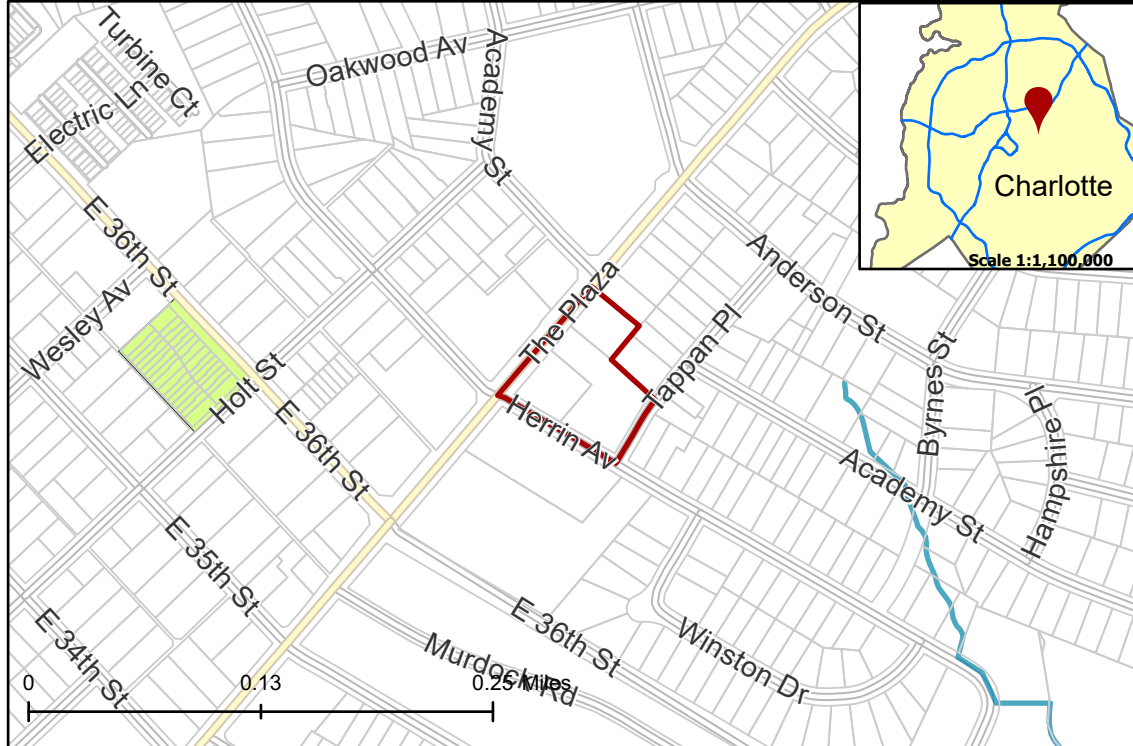


2021-149: Sams Commercial Properties LLC

Current Zoning B-1 (Neighborhood Business)
Requested Zoning UR-2(CD) (Urban Residential, Conditional)

Approximately 2.03 acres

Location of Requested Rezoning



Rezoning Map



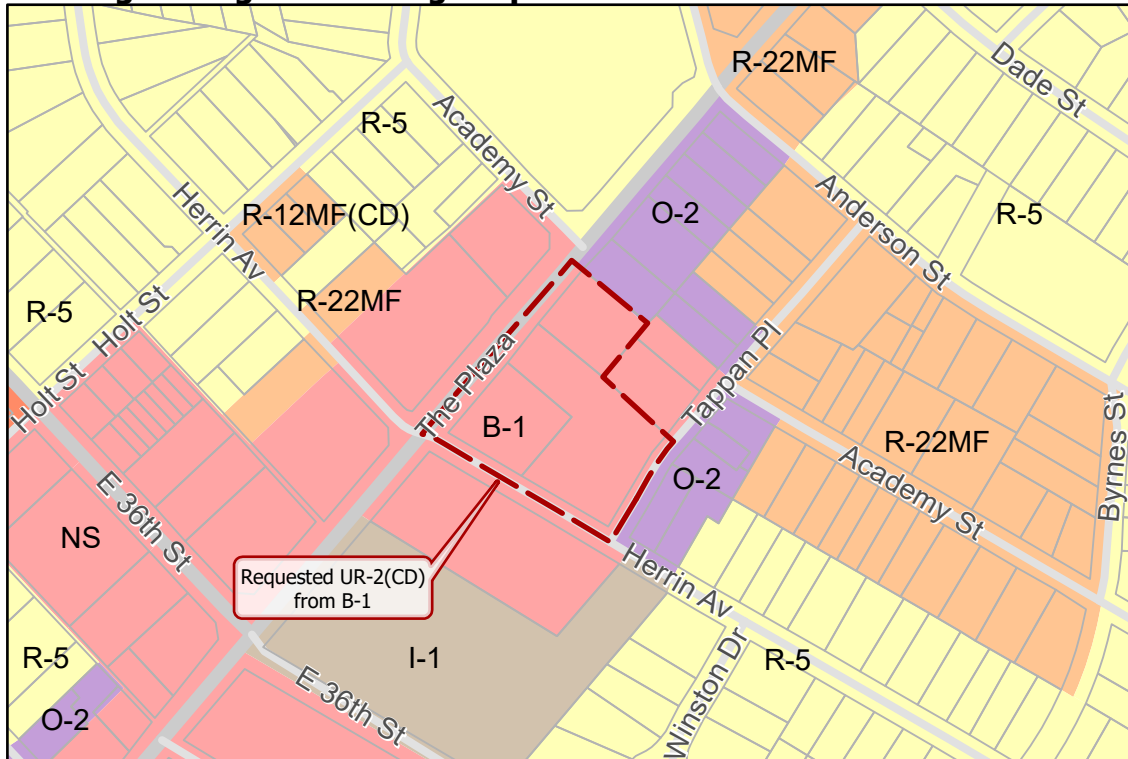
- 2021-149
- Inside City Limits
- Parcel
- Streams
- Transit Supportive Overlay

City Council District

- 1-Larken Egleston



Existing Zoning & Rezoning Request



- Requested UR-2(CD) from B-1

Zoning Classification

- Single Family
- Multi-Family
- Urban Residential
- Office
- Business
- Light Industrial



Map Created 10/1/2021