

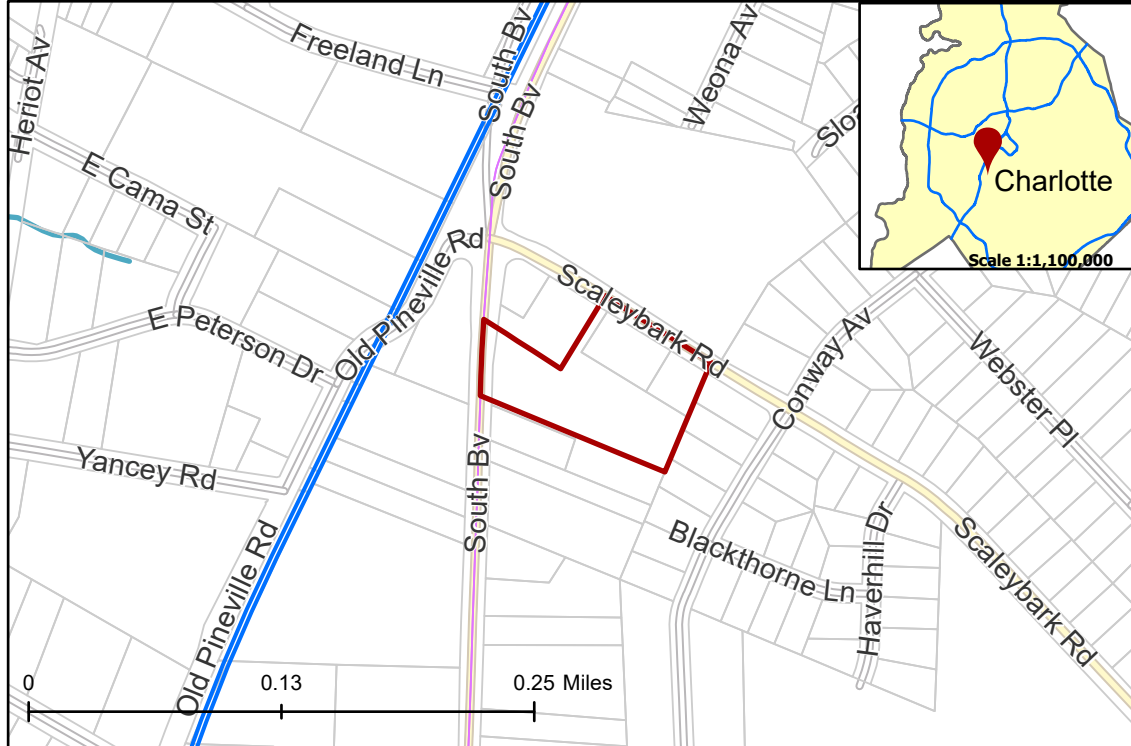
**2021-145: Embrey Partners, Ltd.**

**Current Zoning** TOD-TR (Transit Oriented Development - Transition)

**Requested Zoning** TOD-CC (Transit Oriented Development - Community Center)

Approximately 3.24 acres

**Location of Requested Rezoning**



**Rezoning Map**



**CHARLOTTE**  
PLANNING, DESIGN  
& DEVELOPMENT

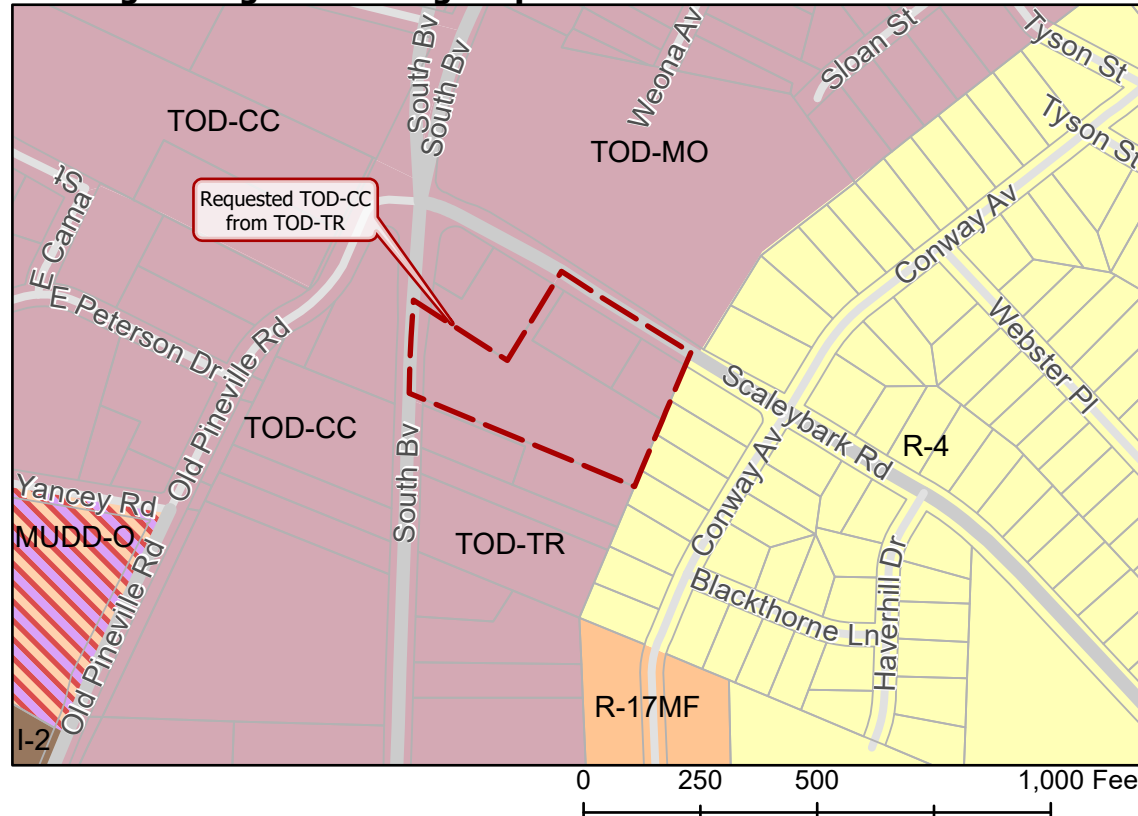
- 2021-145
- Inside City Limits
- Parcel
- LYNX Blue Line
- Streams

**City Council District**

- 1-Larken Egleston



**Existing Zoning & Rezoning Request**



- Requested TOD-CC from TOD-TR

**Zoning Classification**

- Single Family
- Multi-Family
- General Industrial
- Mixed Use
- Transit-Oriented



Map Created 10/1/2021