

# 2021-101: Long Cove Investment Group, LLC

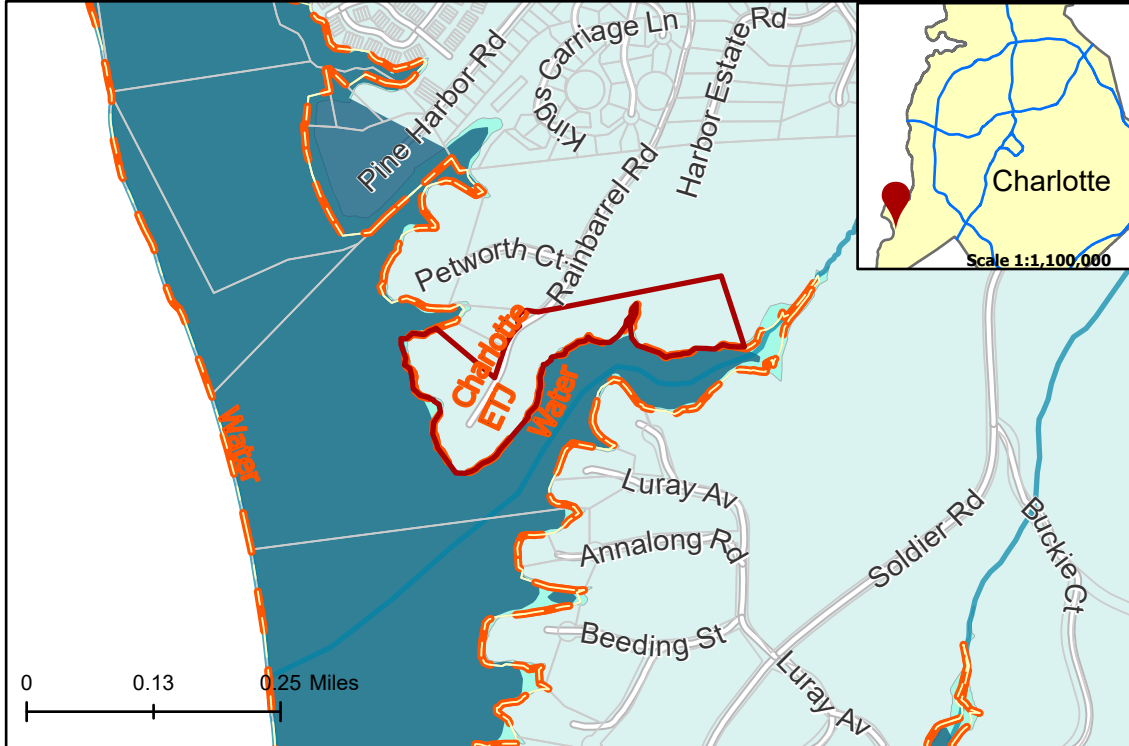
# Rezoning Map



**Current Zoning** R-5 LLWCA (Single Family Residential, Lower Lake Wylie - Critical Area)  
**Requested Zoning** B-1(CD) LLWCA (Neighborhood Business, Conditional, Lower Lake Wylie - Critical Area)

Approximately 14.33 acres

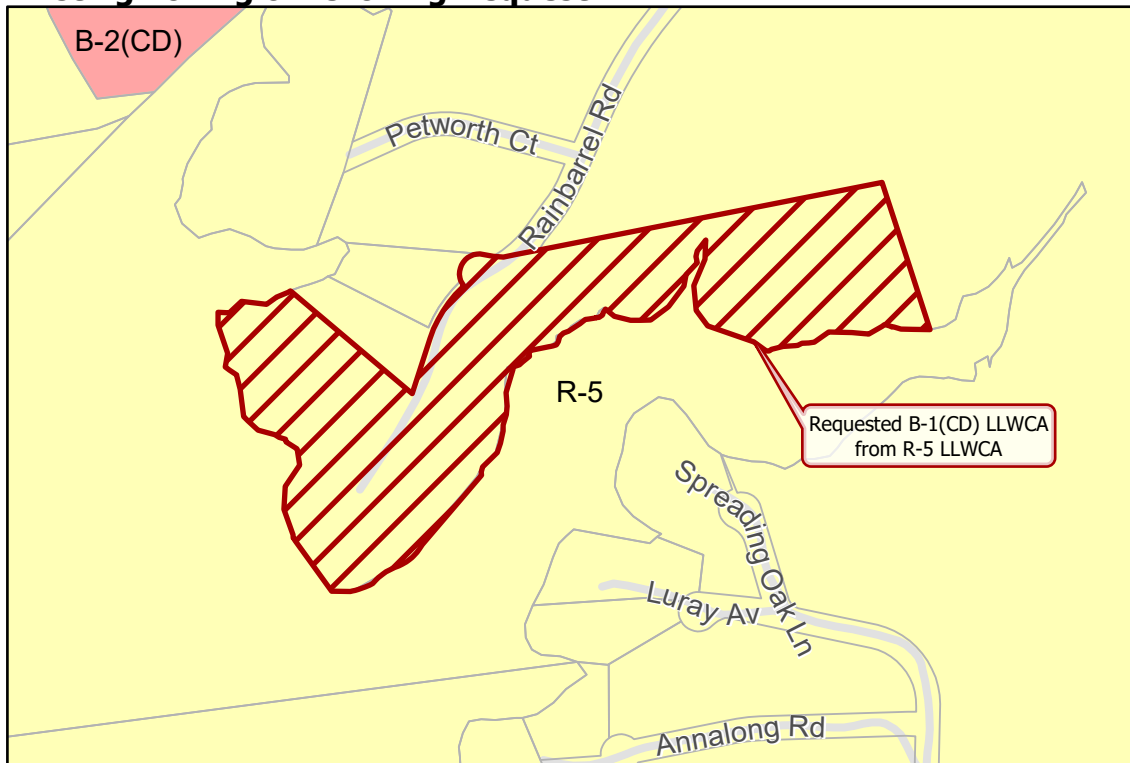
## Location of Requested Rezoning



- 2021-101
- Outside City Limits
- Parcel
- Streams
- Lakes & Ponds
- FEMA Flood Plain
- Lower Lake Wylie - Critical Area
- ETJ - Closest to City Council District**
- 3-Victoria Watlington



## Existing Zoning & Rezoning Request



- Requested B-1(CD) LLWCA from R-5 LLWCA
- Zoning Classification**
- Single Family
- Business



Map Created 7/20/2021