

**2021-072: NRP Properties, LLC**

**Rezoning Map**

**Current Zoning** I-1 (Light Industrial)

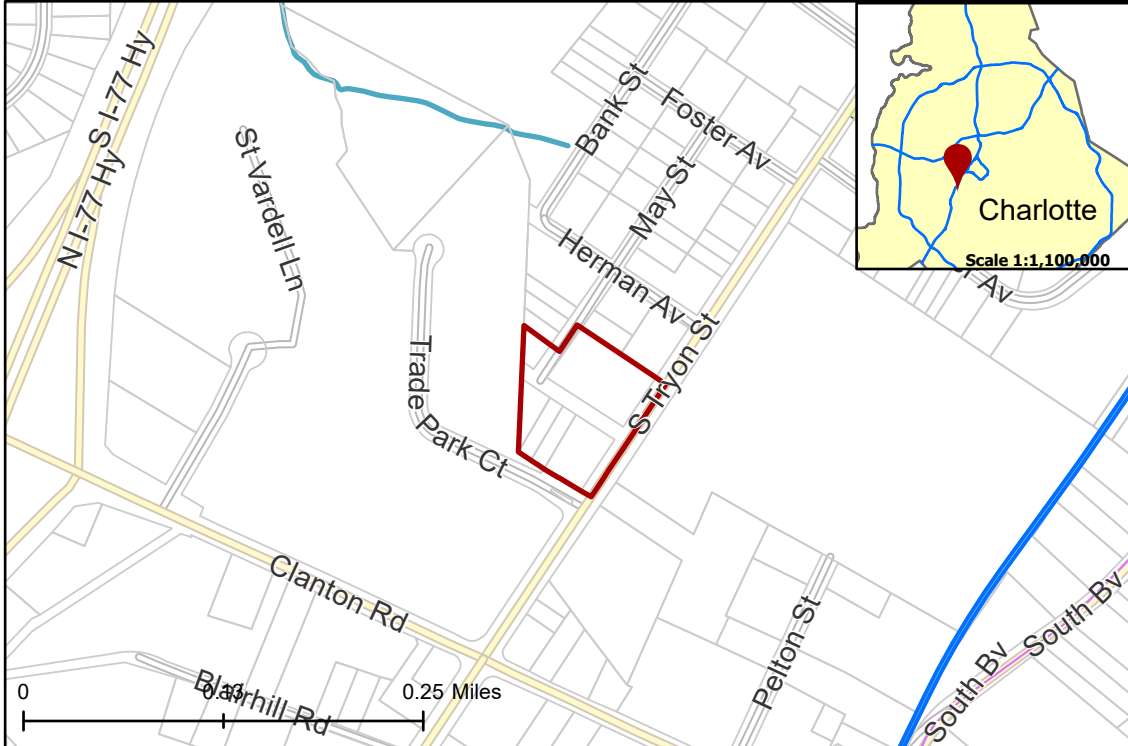
**Requested Zoning** TOD-CC (Transit Oriented Development, Community Center)



**CHARLOTTE**  
PLANNING, DESIGN  
& DEVELOPMENT

Approximately 2.922 acres

**Location of Requested Rezoning**

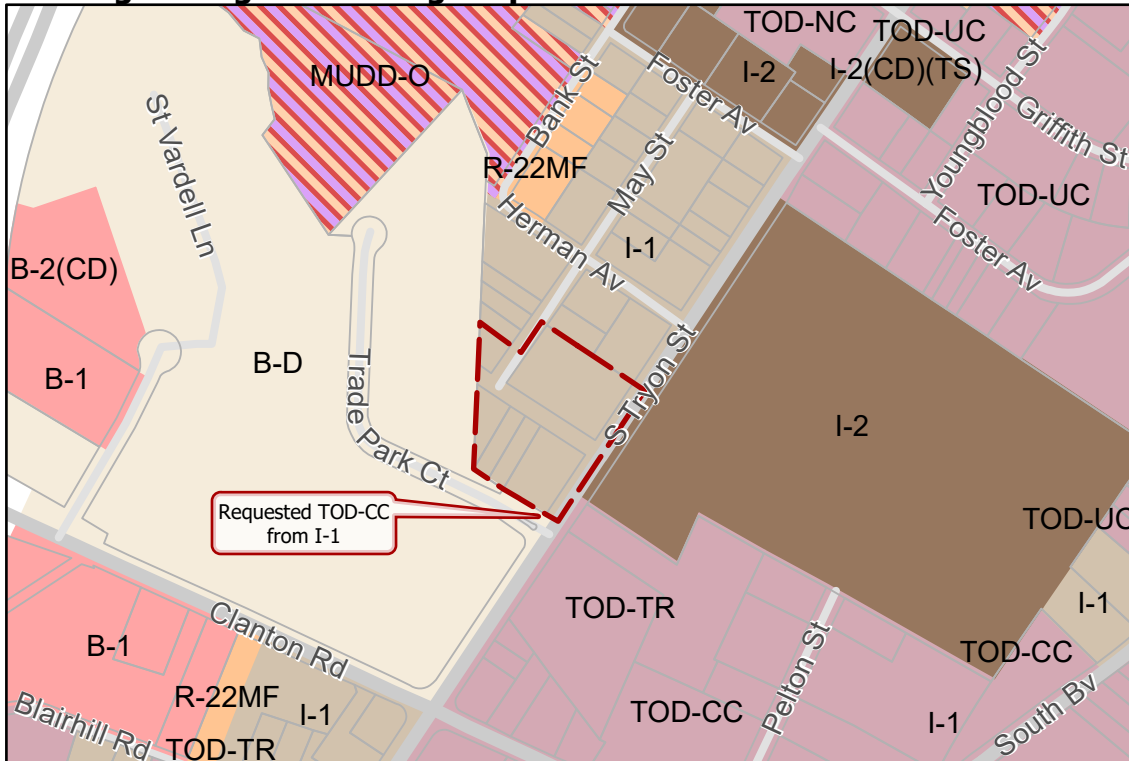


- 2021-072
- Inside City Limits
- Parcel
- LYNX Blue Line
- Streams
- Transit Supportive Overlay

**City Council District**  
3-Victoria Watlington



**Existing Zoning & Rezoning Request**



- Requested TOD-CC from I-1
- Zoning Classification**
- Multi-Family
- Business
- Business-Distribution
- Light Industrial
- General Industrial
- Mixed Use
- Transit-Oriented

0 250 500 1,000 Feet



Map Created 6/21/2021