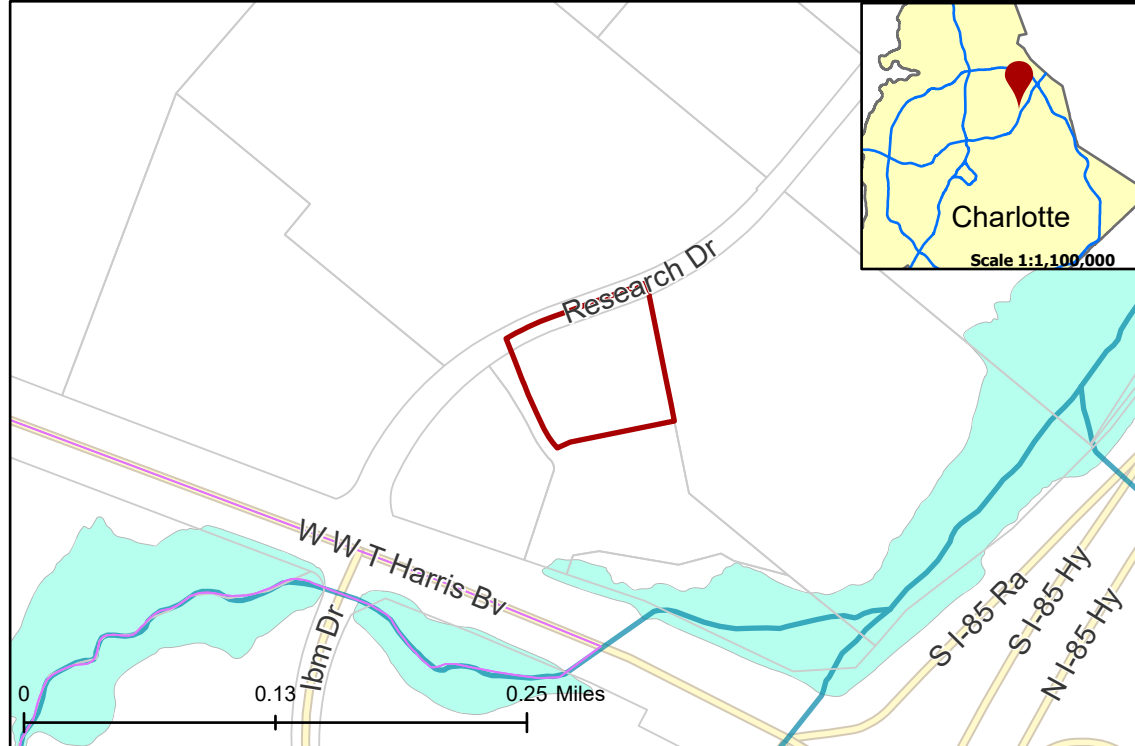


2021-030: Lucern Capital Partners

Current Zoning O-1(CD) (Office District, Conditional)
Requested Zoning RE-3(O) (Research, Optional)

Approximately 2.55 acres
Location of Requested Rezoning

Rezoning Map

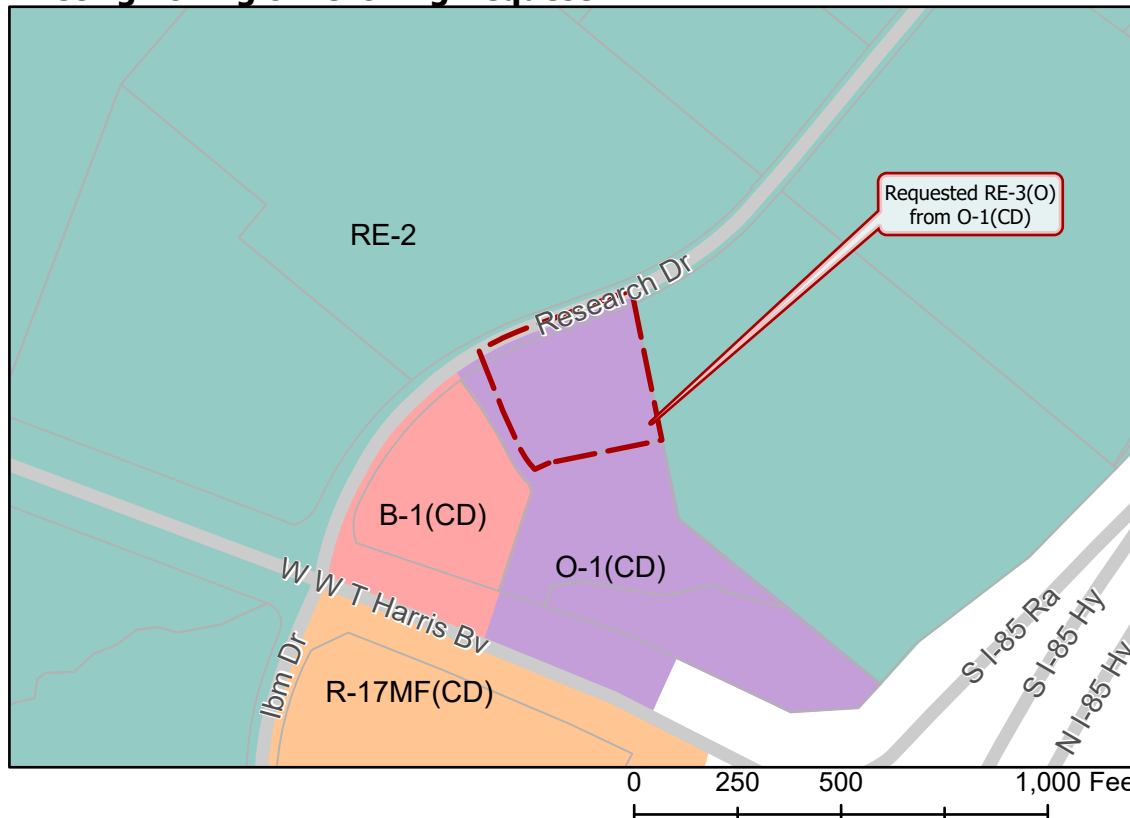


- 2021-030
- Inside City Limits
- Parcel
- Streams
- FEMA Flood Plain

City Council District
 4-Renee Perkins-Johnson



Existing Zoning & Rezoning Request



- Requested RE-3(O) from O-1(CD)
- Zoning Classification**
- Multi-Family
 - Research
 - Office
 - Business



Map Created 2/19/2021