

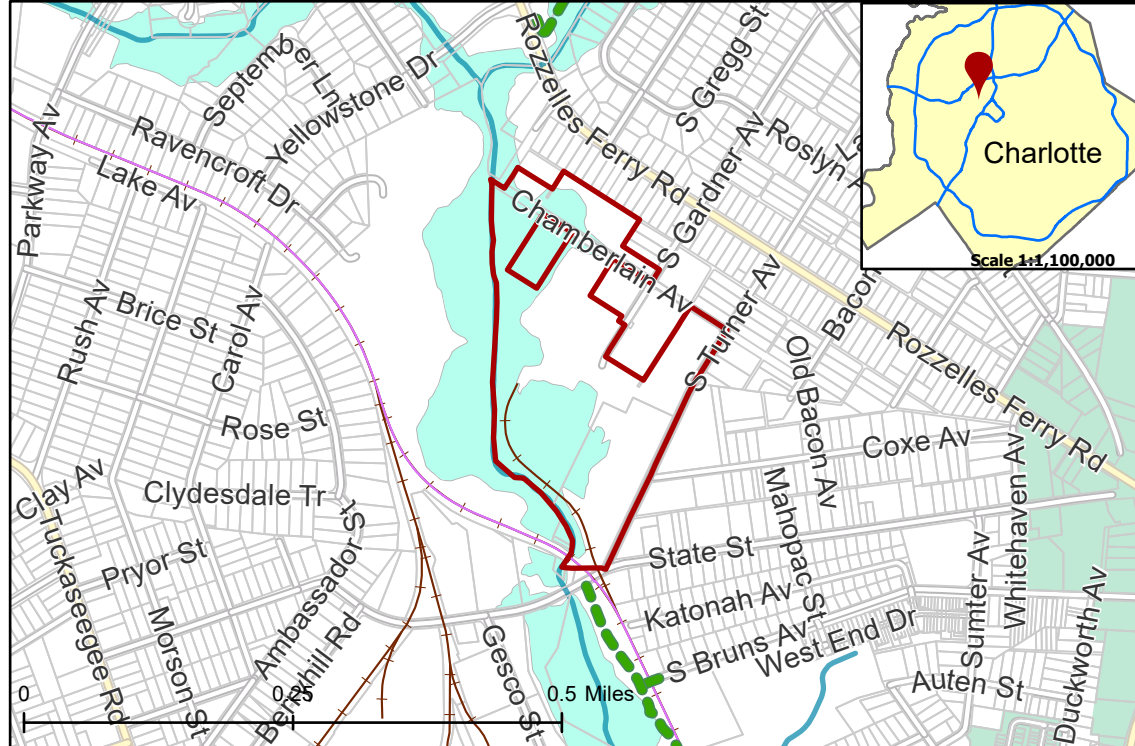
# 2021-021: Portman Residential

**Current Zoning** MUDD-O (Mixed Use Development District, Optional)

**Requested Zoning** MUDD-O SPA (Mixed Use Development District, Optional, Site Plan Amendment) with 5 Year Vested Rights

Approximately 27.65 acres

## Location of Requested Rezoning



## Rezoning Map



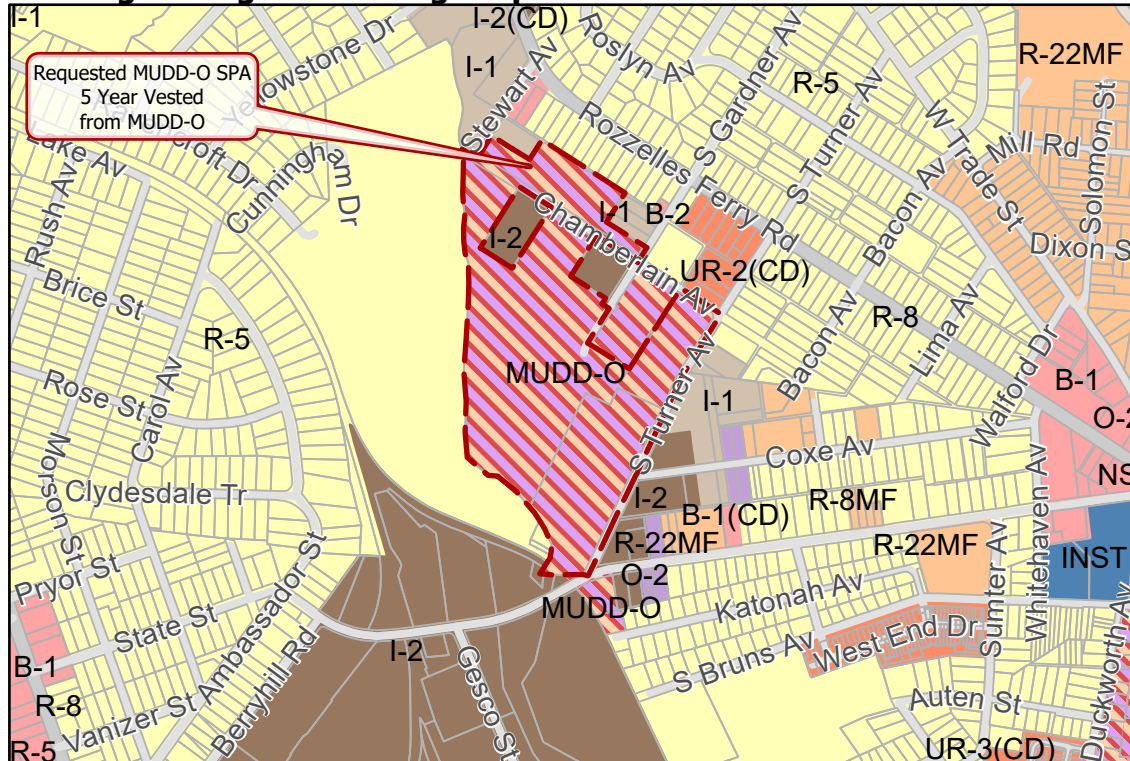
- 2021-021
- Inside City Limits
- Parcel
- Greenway
- Railway
- Streams
- FEMA Flood Plain
- West End Land Use and Pedscape

## City Council District

- 2-Malcolm Graham



## Existing Zoning & Rezoning Request



- Requested MUDD-O SPA
- 5 Year Vested from MUDD-O

## Zoning Classification

- Single Family
- Multi-Family
- Urban Residential
- Institutional
- Office
- Business
- Light Industrial
- General Industrial
- Mixed Use



Map Created 2/19/2021

0 375 750 1,500 Feet