

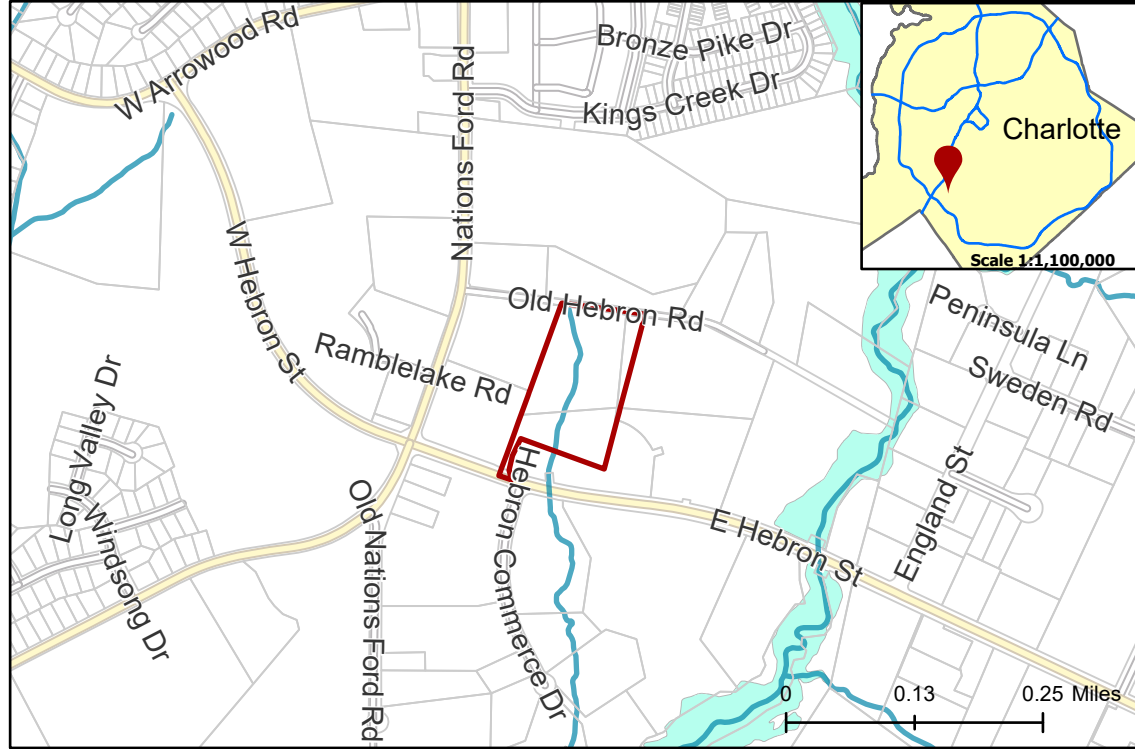
# 2021-013: Hebron Road Holdings, LLC

**Current Zoning** I-1 (Light Industrial)

**Requested Zoning** I-2 (General Industrial)

Approximately 8.25 acres

## Location of Requested Rezoning



## Rezoning Map



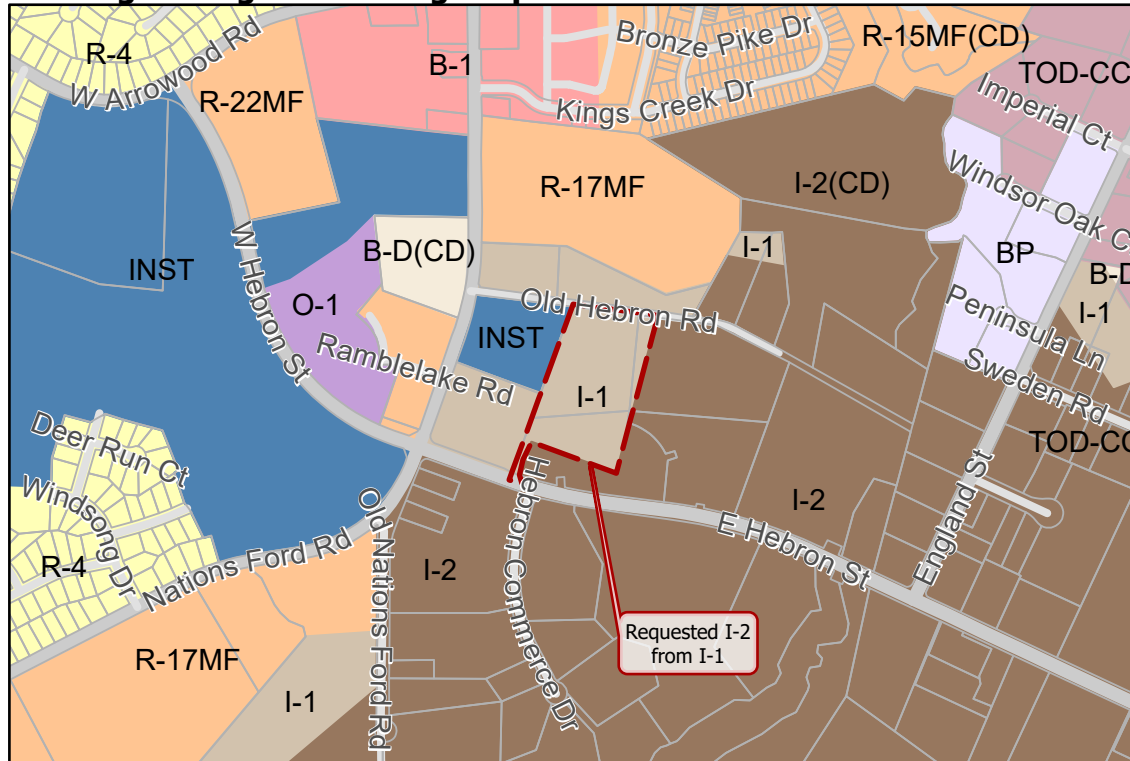
- 2021-013
- Inside City Limits
- Parcel
- Streams
- FEMA Flood Plain

### City Council District

- 3-Victoria Watlington



## Existing Zoning & Rezoning Request



- Requested I-2 from I-1

### Zoning Classification

- Single Family
- Multi-Family
- Institutional
- Office
- Business Park
- Business
- Business-Distribution
- Light Industrial
- General Industrial
- Transit-Oriented



0 375 750 1,500 Feet

Map Created 2/19/2021