

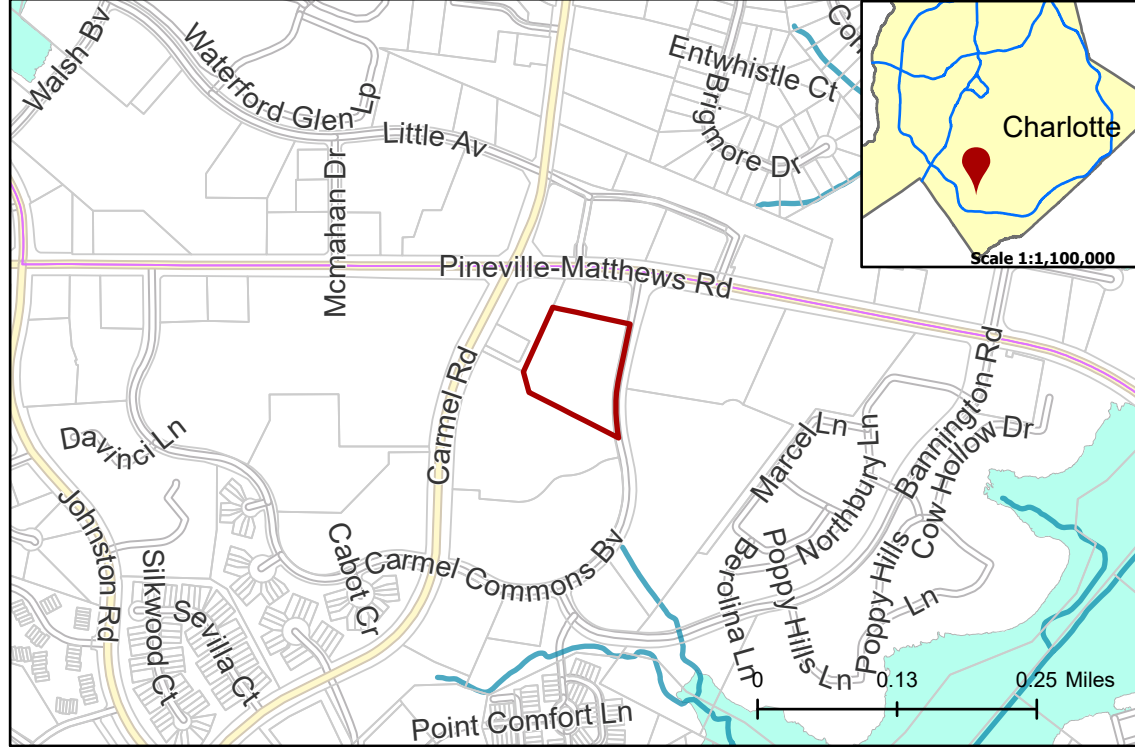
2021-008: The Morgan Companies

Current Zoning O-1 (Office)

Requested Zoning MUDD-O (Mixed Use Development, Optional)

Approximately 4.41 acres

Location of Requested Rezoning



Rezoning Map

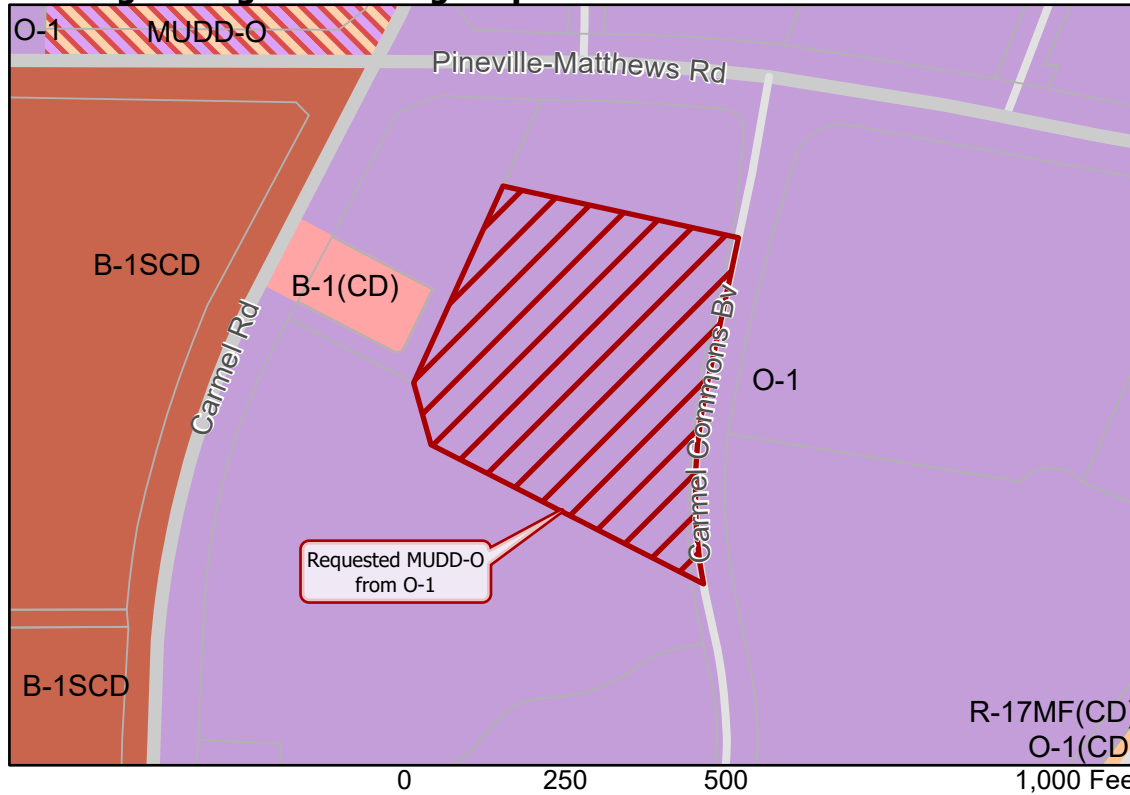


CHARLOTTE
PLANNING, DESIGN
& DEVELOPMENT

- 2021-008
- Inside City Limits
- Parcel
- Streams
- FEMA Flood Plain
- City Council District**
- 7-Edmund H. Driggs



Existing Zoning & Rezoning Request



- Requested MUDD-O from O-1
- Zoning Classification**
- Multi-Family
- Office
- Business
- Commercial Center
- Mixed Use



Map Created 4/23/2021