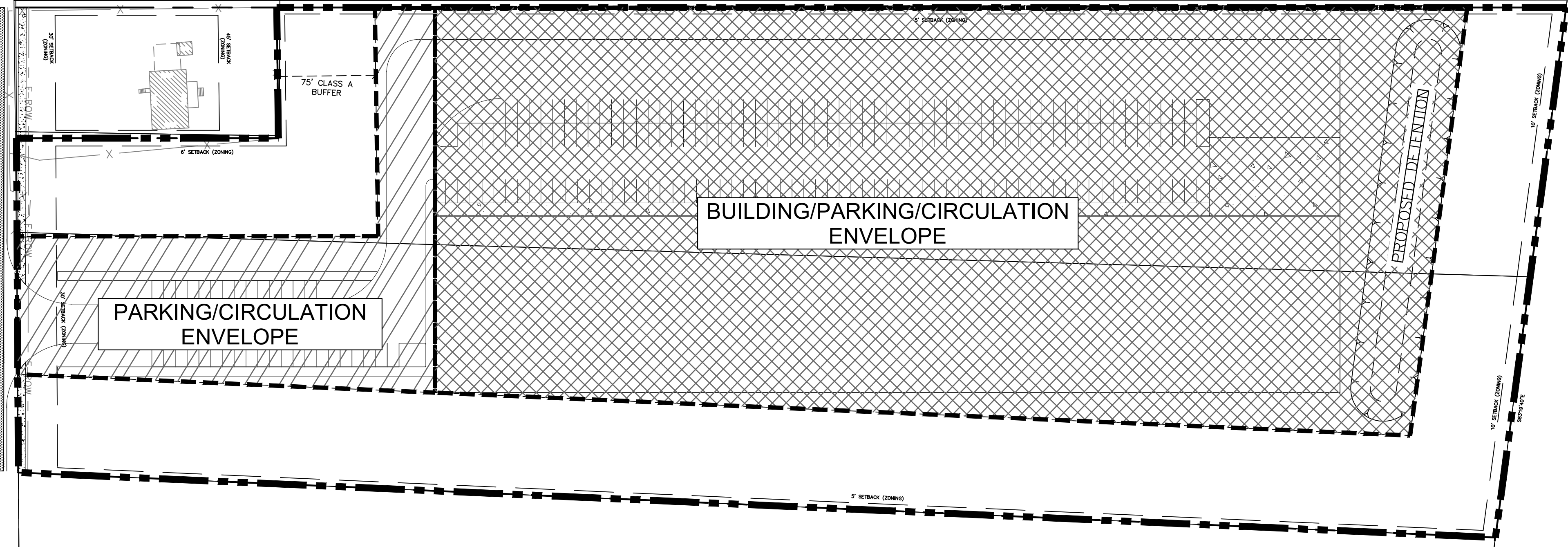


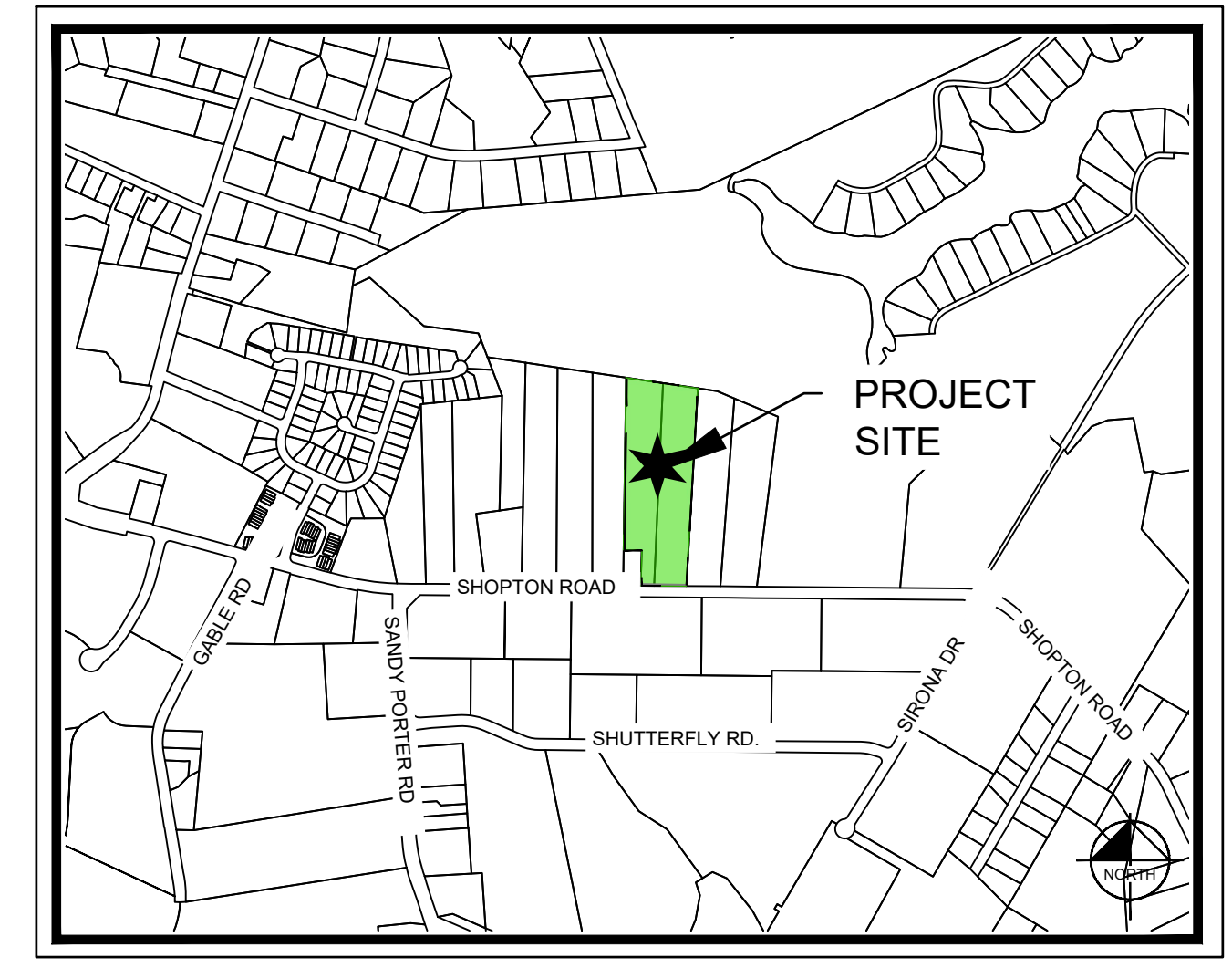
Plotted By: Watts, Austin Sheet: Set:Shopton Rezoning Layout:RZ-1 TECHNICAL DATA SHEET November 18, 2020 09:22:31am C:\Users\Austin.Watts\OneDrive\VAAC\Shopton Road - General\02 - DWG\PlanSheets\Rezoning\RZ-1 TECHNICAL DATA SHEET.dwg

**SHOPTON ROAD**  
60' PUBLIC R/W  
(DB. 10/95 PG. 815)

**SHOPTON ROAD**

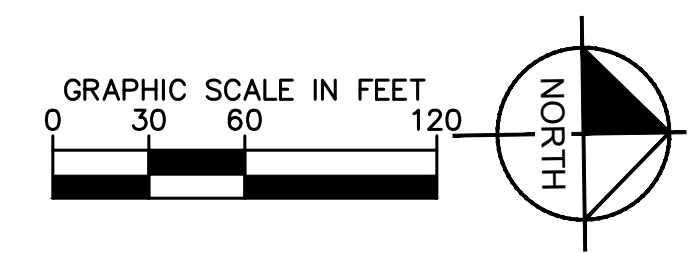


PROPOSED FULL ACCESS INTERSECTION



**VICINITY MAP**  
NOT TO SCALE

LEGEND	
	AREA OUTLINE / PROPERTY LINE
	POTENTIAL PARKING AND CIRCULATION ENVELOPE
	POTENTIAL BUILDING, PARKING, AND CIRCULATION ENVELOPE
	POTENTIAL MOVEMENT ACCESS POINTS



No.	REVISIONS	DATE	BY
1	1ST RESUBMITTAL	10/12/2020	
2	2ND RESUBMITTAL	11/18/2020	

**Kimley-Horn**  
© 2020 KIMLEY-HORN AND ASSOCIATES, INC.  
200 SOUTH TRYON ST., SUITE 200, CHARLOTTE, NC 28202  
WWW.KIMLEY-HORN.COM  
NC LICENSE #F-0102

KH PROJECT	015272048
DATE	06/12/2020
SCALE	AS SHOWN
DESIGNED BY	
DRAWN BY	
CHECKED BY	

**TECHNICAL DATA SHEET**  
REZONING PETITION NO. 2020-\_\_\_\_\_

**PCR MIXED USE**  
PREPARED FOR  
**AMERICAN ASSET CORPORATION**  
CITY OF CHARLOTTE, NORTH CAROLINA

SHEET NUMBER  
**RZ-1**

This document, together with the concepts and designs presented herein, as an instrument of service, is intended only for the specific purpose and client for which it was prepared. Reuse of and improper reliance on this document without written authorization and adaptation by Kimley-Horn and Associates, Inc. shall be without liability to Kimley-Horn and Associates, Inc.







