

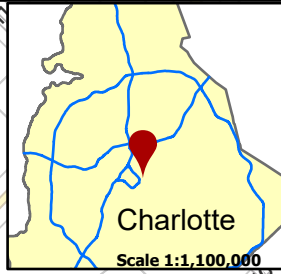
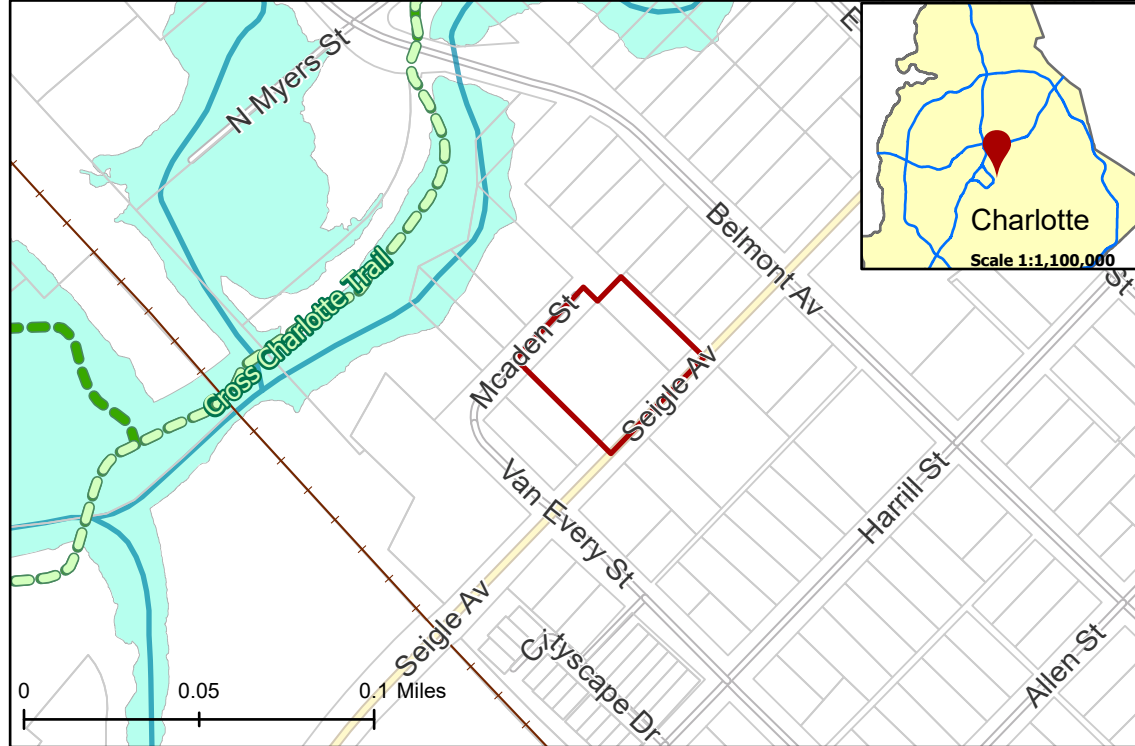
# 2020-178: Orsini Teresa M

**Current Zoning** MUDD-O (Mixed Use Development District, Optional), I-2 (General Industrial)

**Requested Zoning** MUDD-O, SPA (Mixed Use Development District, Optional, Site Plan Amendment), MUDD-O (Mixed Use Development District)

Approximately 0.7 acres

## Location of Requested Rezoning



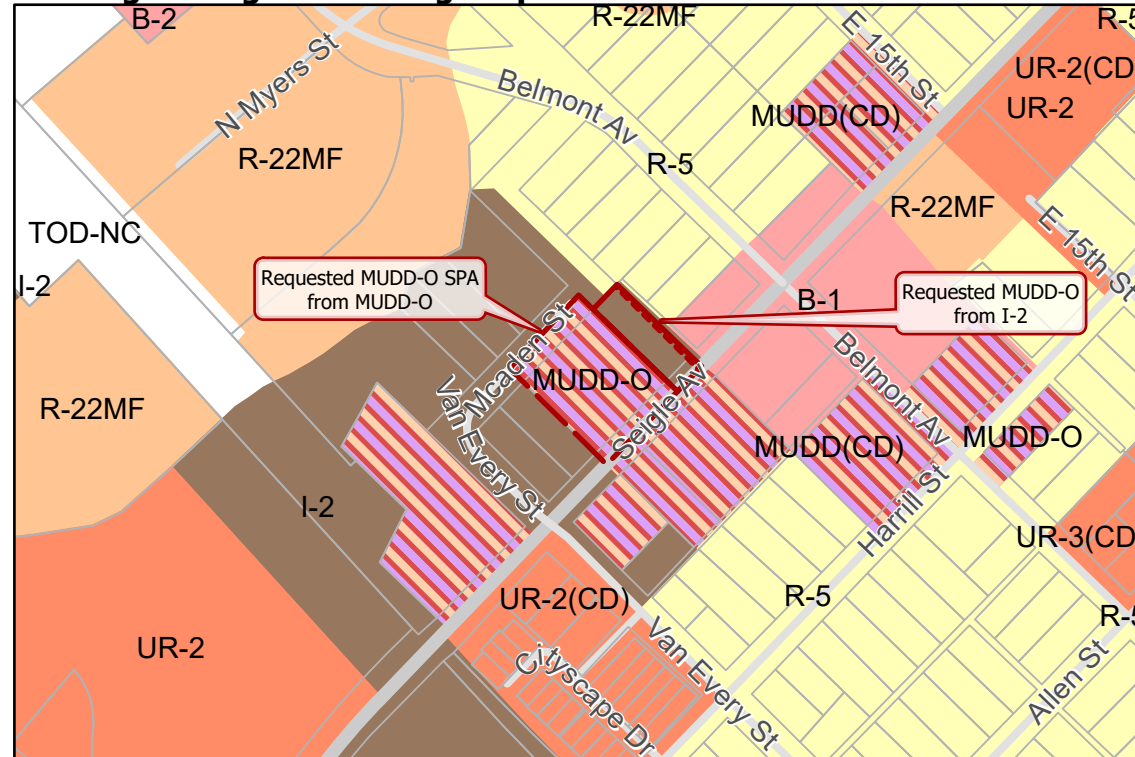
## Rezoning Map



- 2020-178
- Inside City Limits
- Parcel
- Cross Charlotte Trail
- Greenway
- Railway
- Streams
- FEMA Flood Plain
- City Council District**
- 1-Larken Egleston



## Existing Zoning & Rezoning Request



- Requested MUDD-O SPA from MUDD-O
- Requested MUDD-O from I-2
- Zoning Classification**
- Single Family
- Multi-Family
- Urban Residential
- Business
- General Industrial
- Mixed Use



Map Created 11/23/2020