

2020-141: Flagship Healthcare Properties, LLC

Rezoning Map

Current Zoning O-2 (Office)

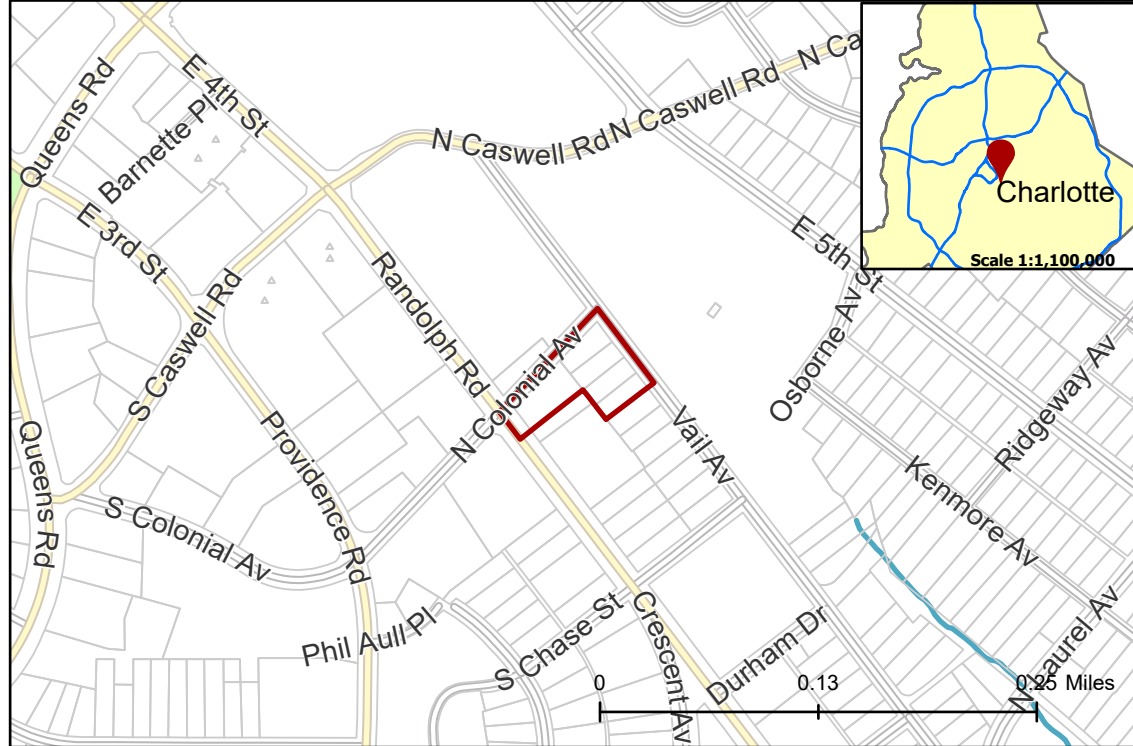
Requested Zoning MUDD-O (Mixed-Use Development, Optional)



CHARLOTTE
PLANNING, DESIGN
& DEVELOPMENT

Approximately 1.34 acres

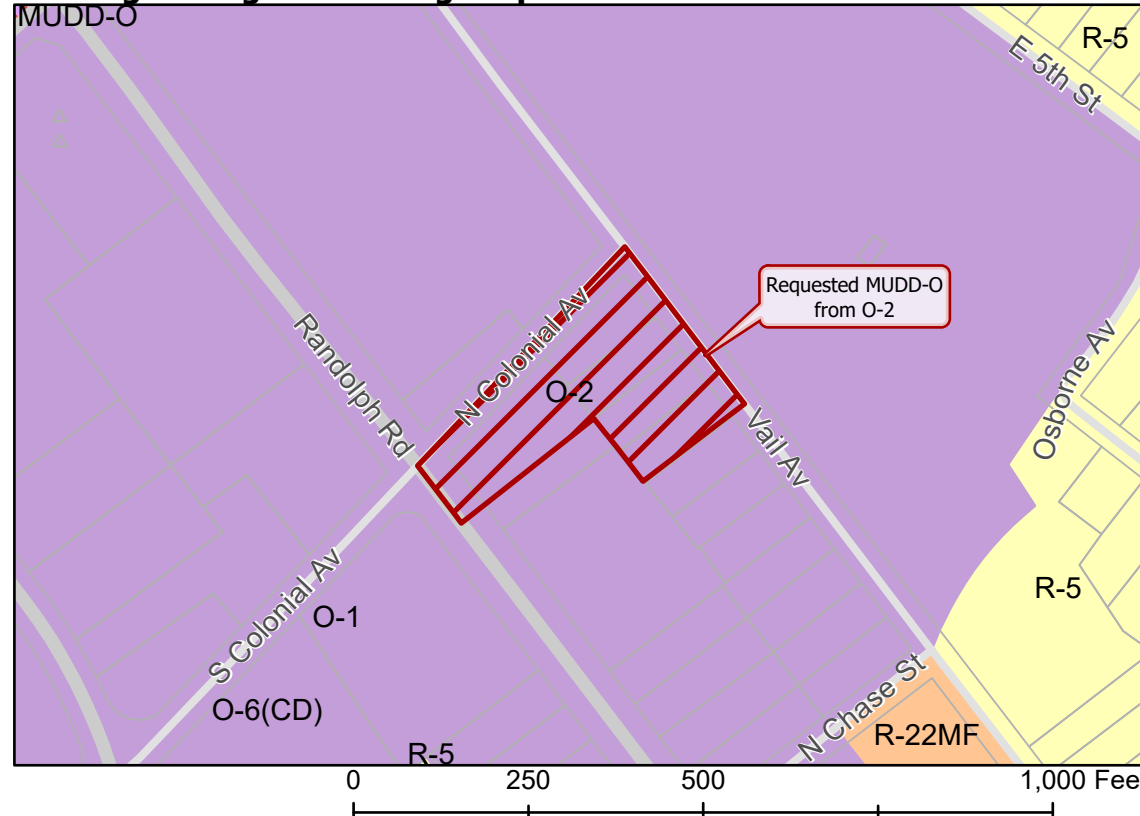
Location of Requested Rezoning



- 2020-141
- Inside City Limits
- Parcel
- Streams
- Midtown Morehead Cherry
- City Council District**
- 1-Larken Egleston



Existing Zoning & Rezoning Request



- Requested MUDD-O from O-2
- Zoning Classification**
- Single Family
- Multi-Family
- Office
- Mixed Use



Map Created 9/15/2020