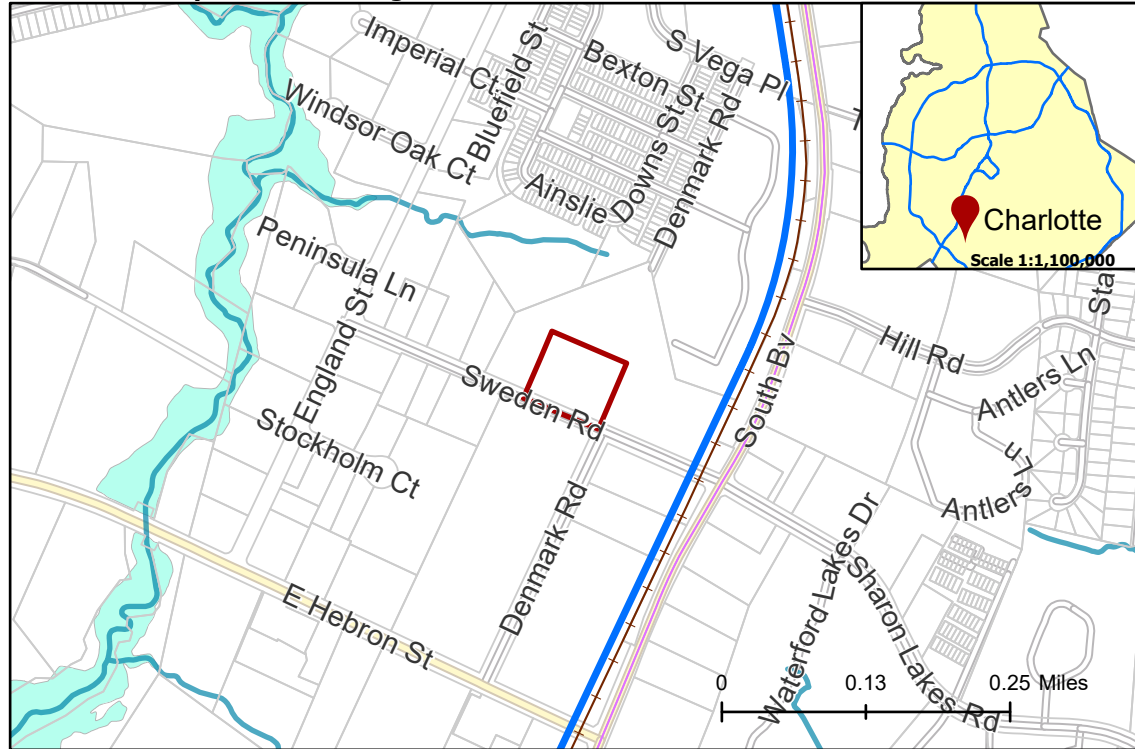


2020-110: General Services - City of Charlotte

Current Zoning TOD-CC (Transit Oriented Development - Community Center)
Requested Zoning I-2 (General Industrial)

Approximately 2.5 acres
Location of Requested Rezoning



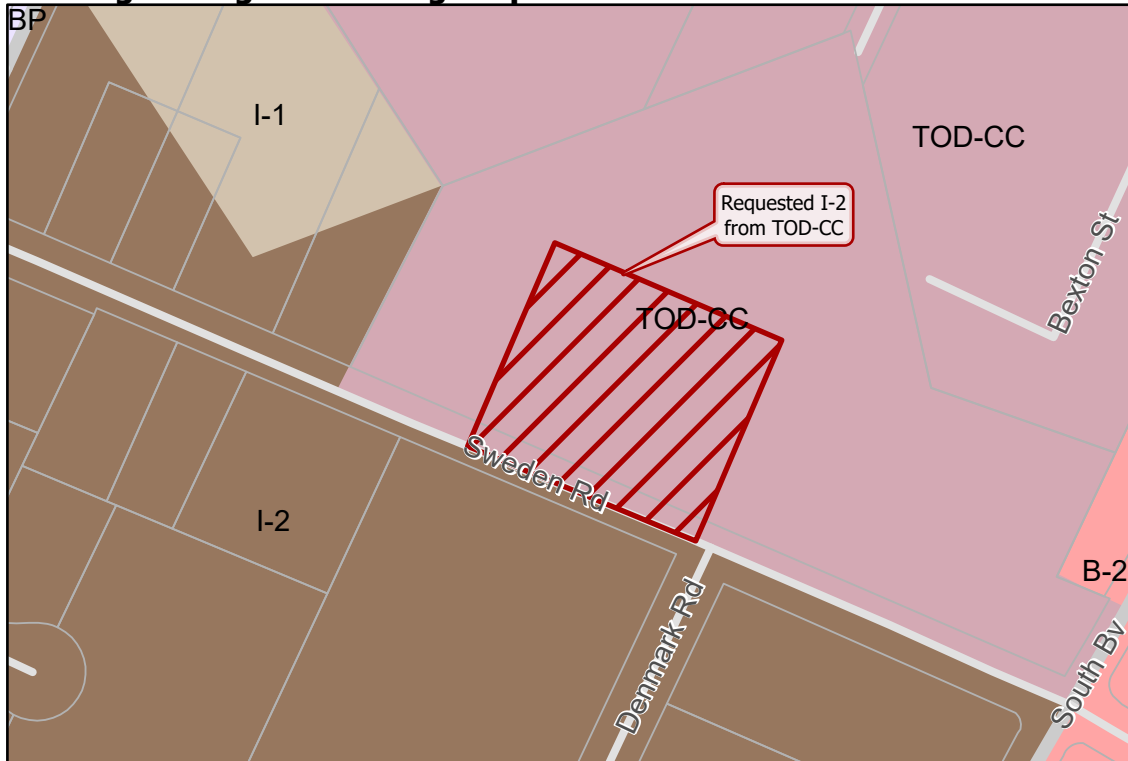
Rezoning Map



- 2020-110
- Inside City Limits
- Parcel
- LYNX Blue Line
- Railway
- Streams
- FEMA Flood Plain
- City Council District**
- 3-Victoria Watlington



Existing Zoning & Rezoning Request



- Requested I-2 from TOD-CC
- Zoning Classification**
- Business Park
- Business
- Light Industrial
- General Industrial
- Transit-Oriented



Map Created 6/22/2020