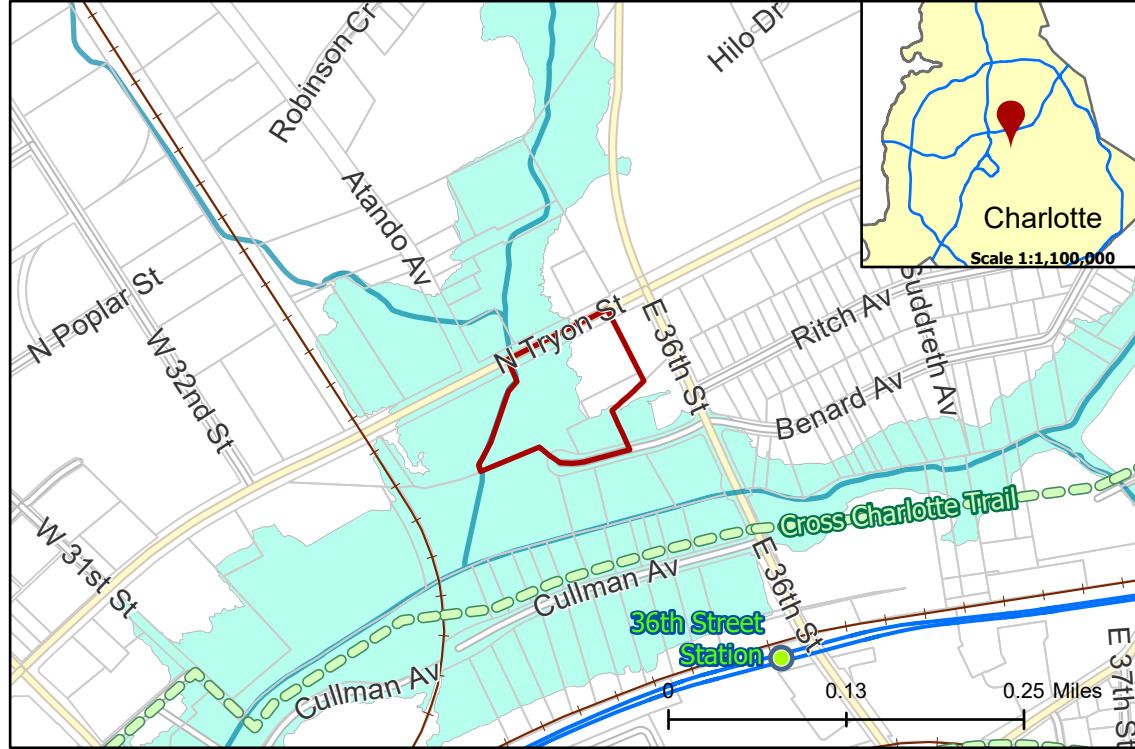


**2020-098: AHI 3100, LLC**

**Current Zoning** I-1 (Light Industrial), B-2 (Neighborhood Business)  
**Requested Zoning** TOD-CC (Transit Oriented Development - Community Center)

Approximately 4.92 acres

**Location of Requested Rezoning**



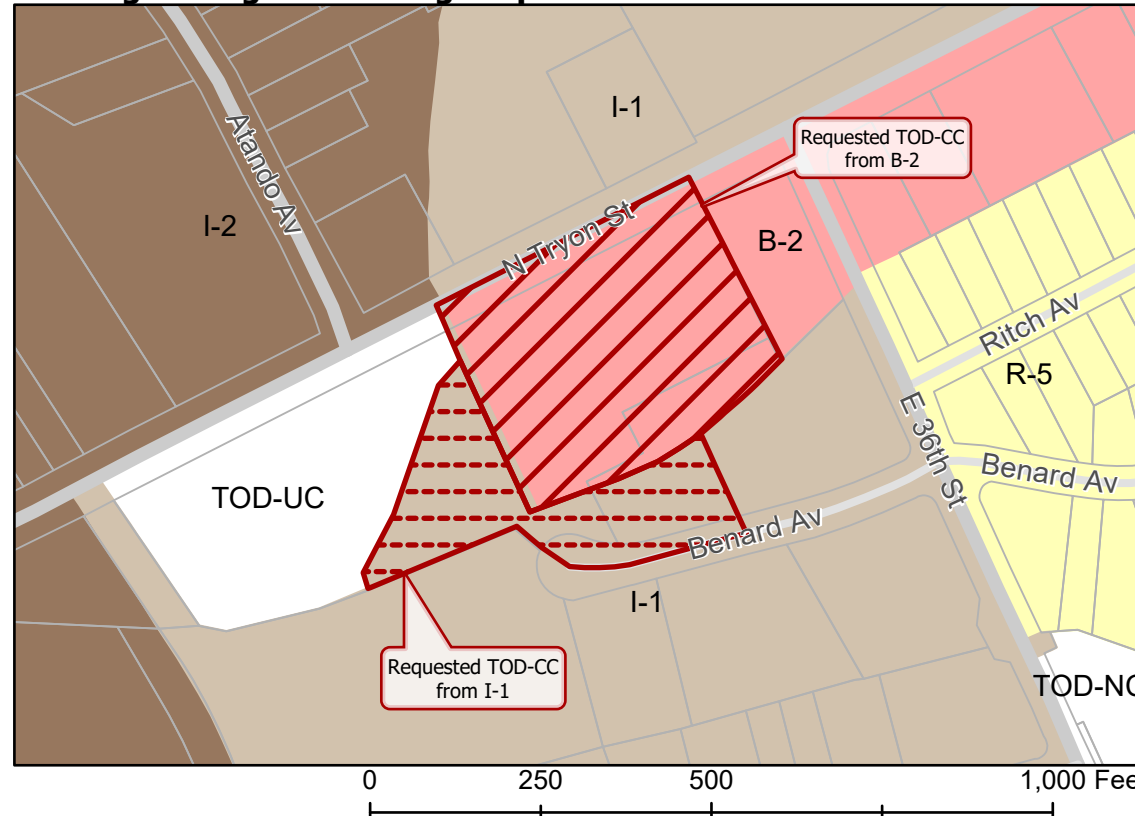
**Rezoning Map**



- 2020-098
- Inside City Limits
- Parcel
- LYNX Blue Line Station
- Cross Charlotte Trail
- LYNX Blue Line
- Railway
- Streams
- FEMA Flood Plain
- City Council District**
- 1-Larken Egleston



**Existing Zoning & Rezoning Request**



- Requested TOD-CC from B-2
- Requested TOD-CC from I-1
- Zoning Classification**
- Single Family
- Business
- Light Industrial
- General Industrial



Map Created 9/1/2020