

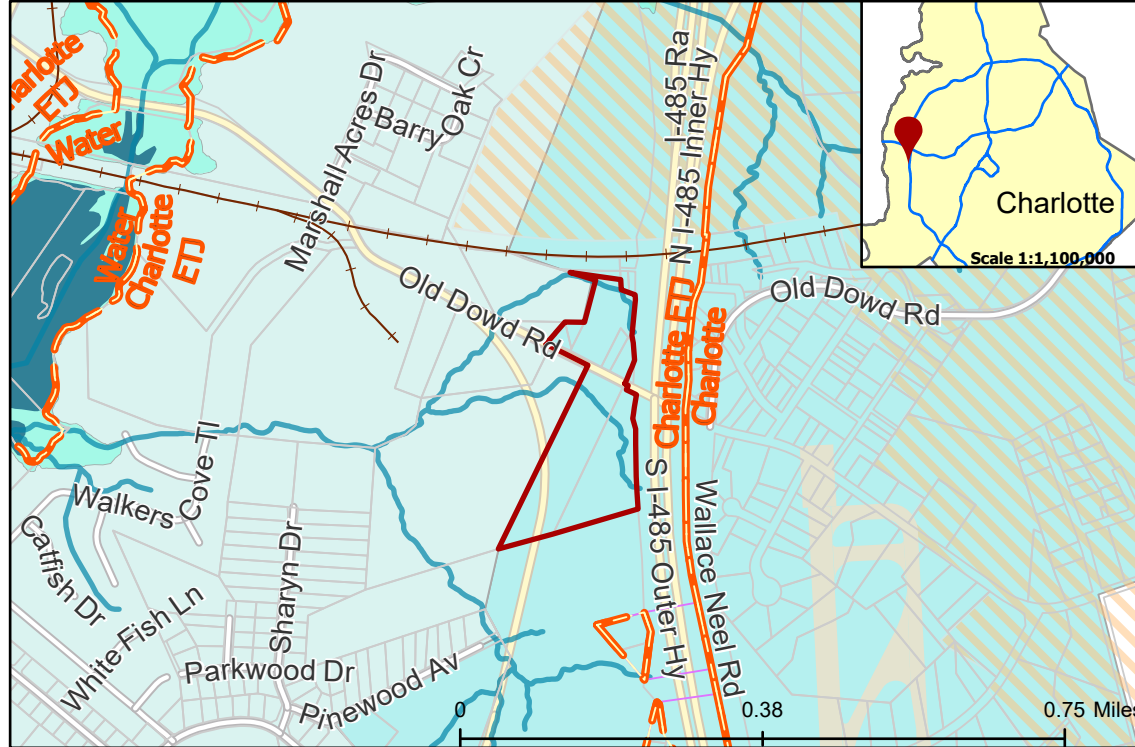
2020-078: Charlotte Douglas International Airport

Current Zoning I-1 LLWPA(Light Industrial, Lower Lake Wylie Protected Area),
R-3 LLWPA (Single Family Residential, Lower Lake Wylie Protected Area)

Requested Zoning I-2 LLWPA (General Industrial, Lower Lake Wylie Protected Area)

Approximately 19.5 acres

Location of Requested Rezoning



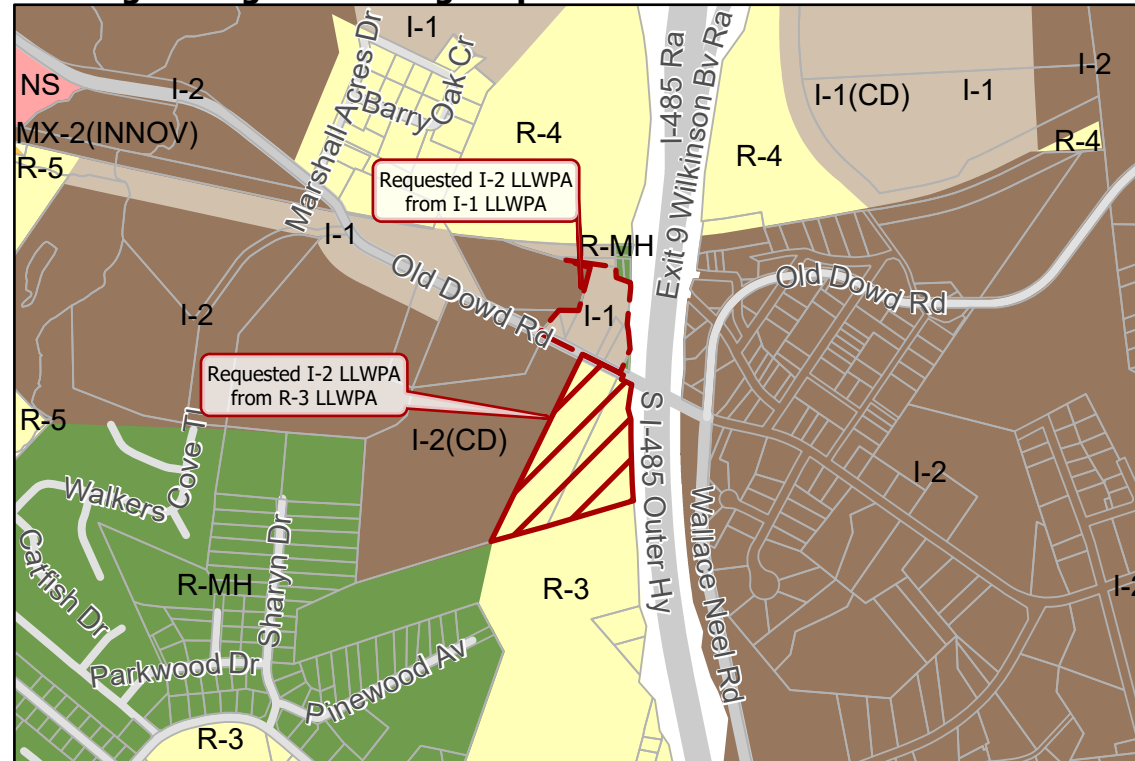
Rezoning Map



- 2020-078
 - Outside City Limits
 - Parcel
 - Railway
 - Streams
 - Airport
 - Lakes & Ponds
 - FEMA Flood Plain
 - Airport Noise Overlay
- Watershed Overlay**
- Lower Lake Wylie - Critical Area
 - Lower Lake Wylie - Protected Area



Existing Zoning & Rezoning Request



- Requested I-2 LLWPA from I-1 LLWPA
- Requested I-2 LLWPA from R-3 LLWPA

Zoning Classification

- Single Family
- Manufactured Home
- Mixed Residential
- Business
- Light Industrial
- General Industrial



Map Created 5/28/2020

0 500 1,000 2,000 Feet