

**2019-171: Anthony Kuhn**

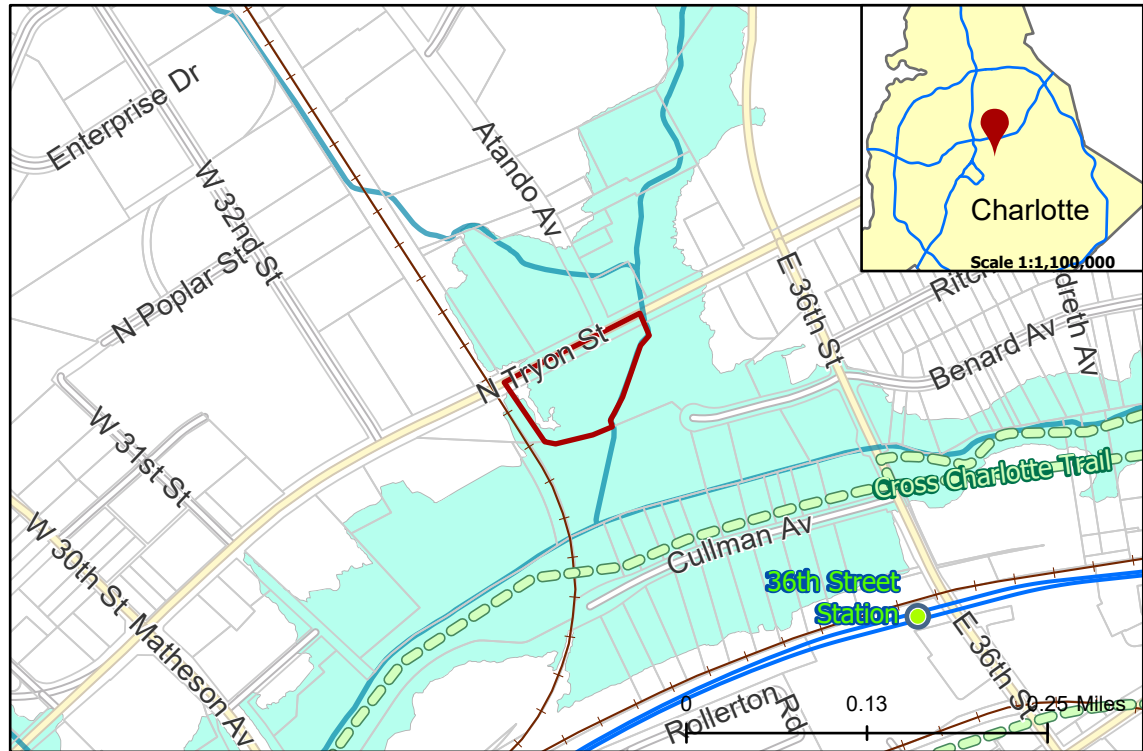
**Current Zoning** I-2 (General Industrial)

**Requested Zoning** TOD-UC (Transit Oriented Development - Urban Center)

Approximately 2.55 acres

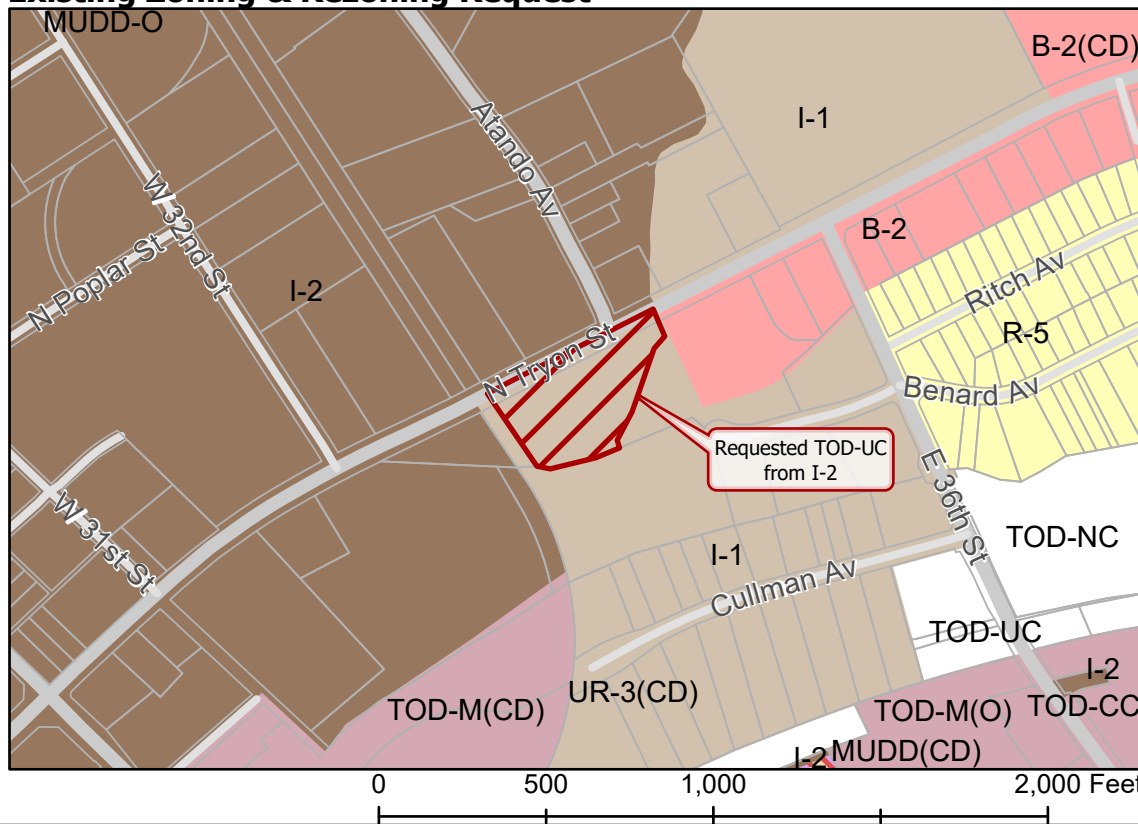
**Location of Requested Rezoning**

**Rezoning Map**



- 2019-171
- Inside City Limits
- Parcel
- LYNX Blue Line Station
- Cross Charlotte Trail
- LYNX Blue Line
- Railway
- Streams
- FEMA Flood Plain
- City Council District
- 1-Larken Egleston

**Existing Zoning & Rezoning Request**



- Requested TOD-UC from I-2
- Zoning Classification**
- Single Family
- Urban Residential
- Business
- Light Industrial
- General Industrial
- Mixed Use
- Transit-Oriented



Map Created 12/23/2019